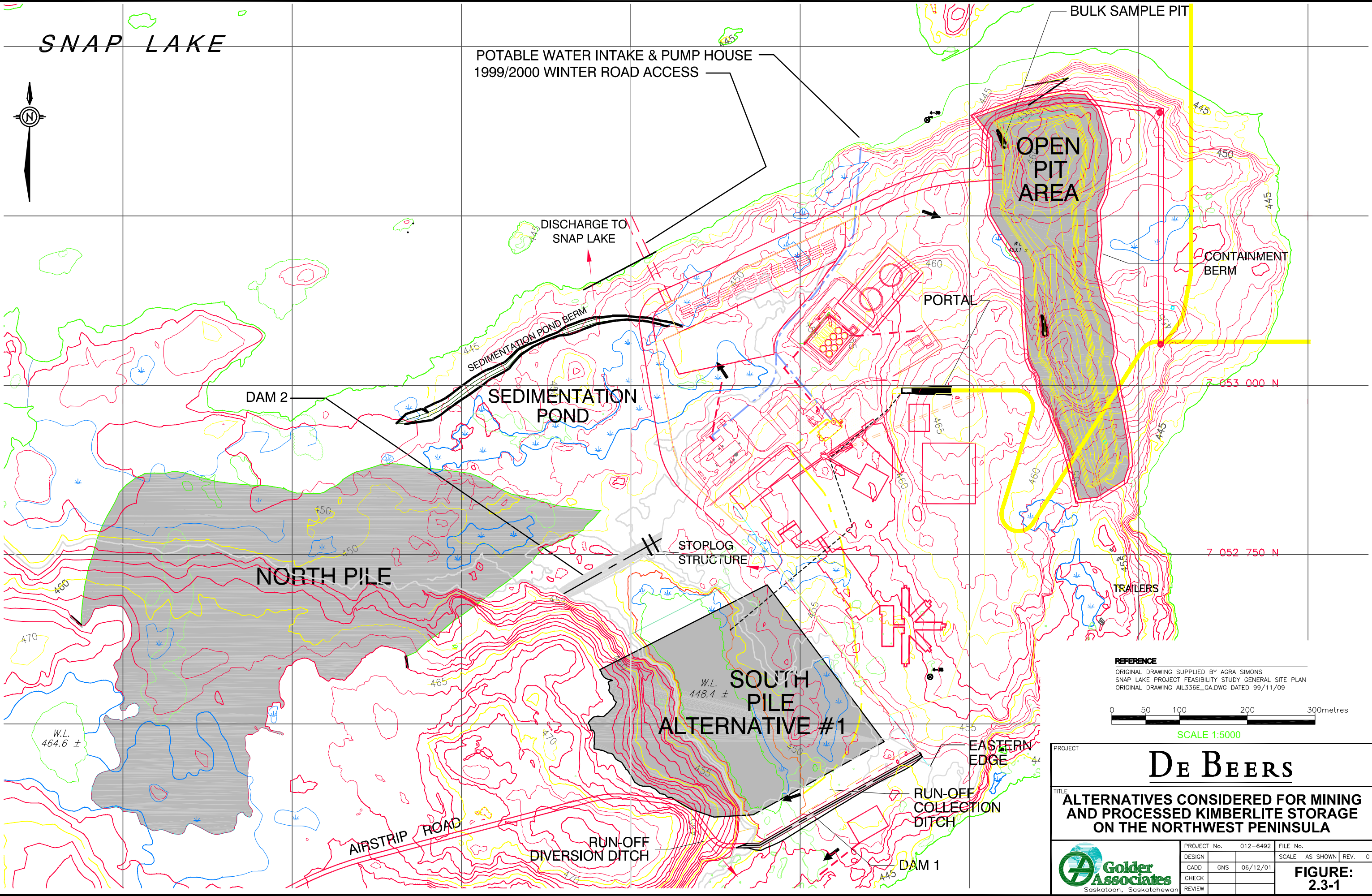


N:\Active\6400\012-6492\CAD\Section 2 ALTERNATIVES\Drawing file: 6492-fig.2.3-1-alternative storage northwest peninsula.dwg Jan 24, 2002 - 10:42am




REFERENCE
ORIGINAL DRAWING SUPPLIED BY AGRA SIMONS
SNAP LAKE PROJECT FEASIBILITY STUDY GENERAL SITE PLAN
ORIGINAL DRAWING AIL336E_GA.DWG DATED 99/11/09

0 50 100 200 300metres

SCALE 1:5000

PROJECT		De Beers	
TITLE		ALTERNATIVES CONSIDERED FOR MINING AND PROCESSED KIMBERLITE STORAGE ON THE NORTHWEST PENINSULA	
PROJECT No. 012-6492		FILE No.	
DESIGN	GNS	SCALE	AS SHOWN
CADD	06/12/01	REV.	0
CHECK		FIGURE: 2.3-1	
REVIEW			



Golder Associates
Saskatoon, Saskatchewan