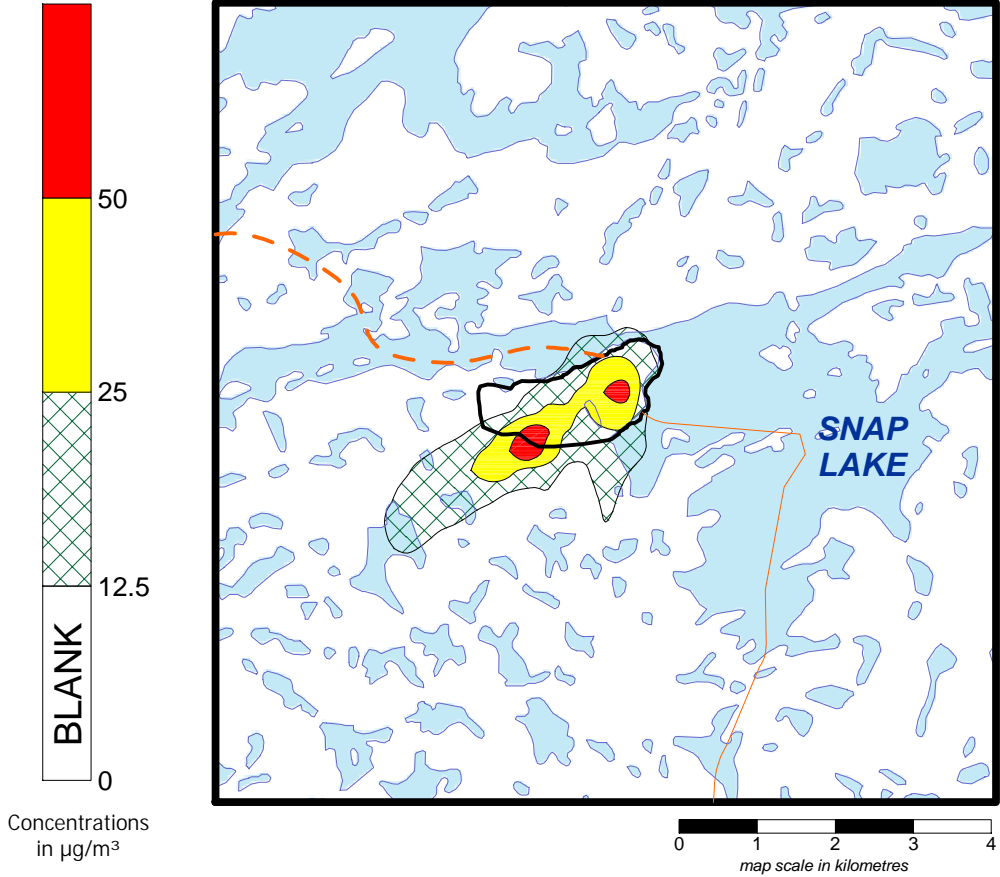


- Indicates the limits of the air quality regional study area.
- Indicates the active mine area at the Snap Lake Diamond Project.
- Indicates the limits of the detailed view, shown in the upper right of the page.
- Tibbitt-Contwoyto Winter Road
- Winter Access Road
- Esker Access Road

0 10 20 30 40
map scale in kilometres



Detailed View of the Snap Lake Diamond Mine Site



Parameter	Value	
Assessment Case	Application	
Model	CALPUFF 2-D Mode	
Meteorology	2 Years of On-site Meteorology	
PM ₁₀ Emissions [t/d]	0.209	
24-Hour PM ₁₀ Criteria [µg/m ³]	50	
Prediction	RSA including the active mine area	RSA excluding the active mine area
Maximum 24-Hour PM ₁₀ Concentration [µg/m ³]	120.7	45.2
Area Greater than Criteria [ha]	18	0

Figure 7.3-3
Maximum 24-Hour Application PM₁₀ Predictions

DE BEERS

