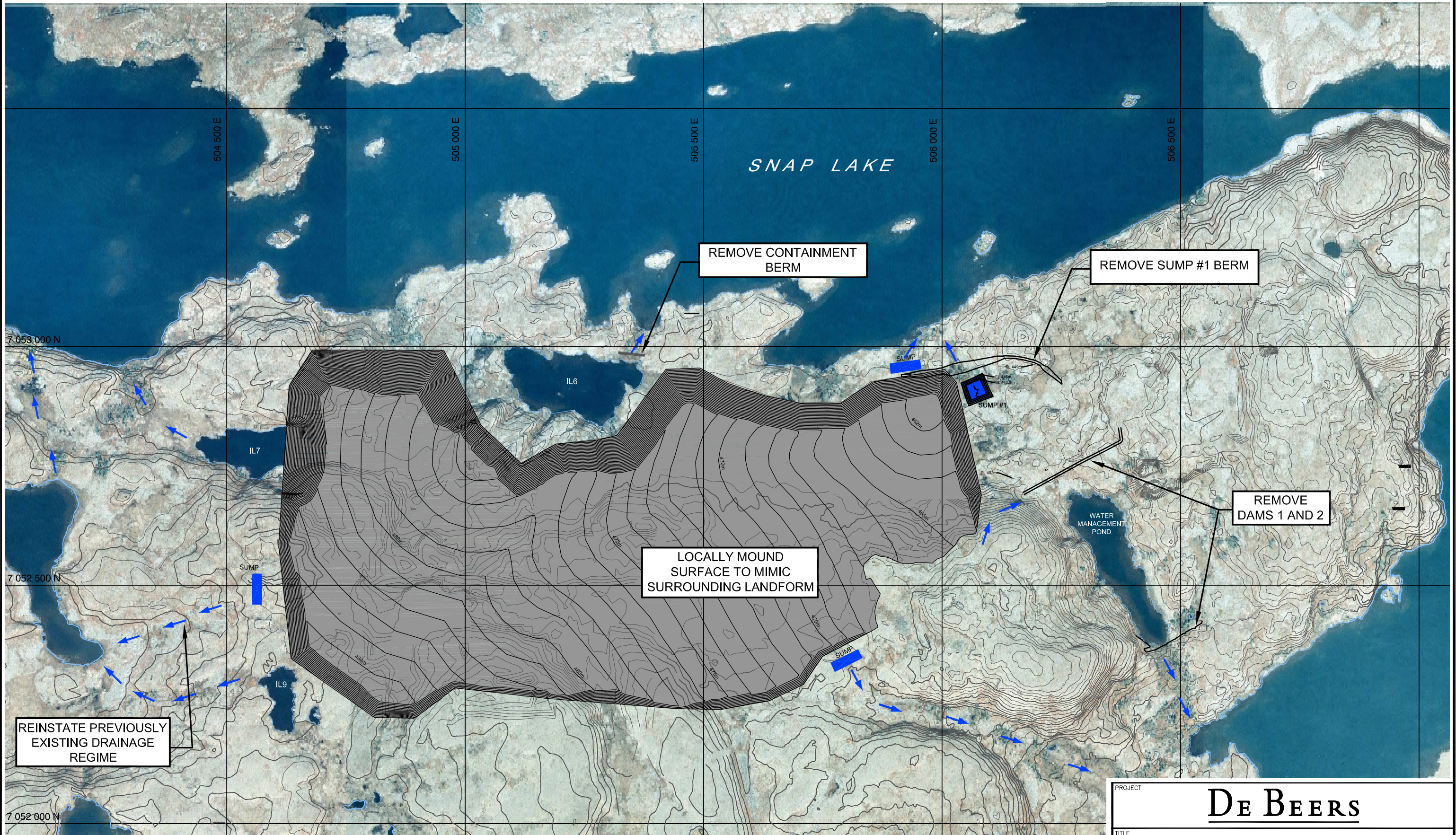


N:\Active\6400\012-6492\CAD\appendix-III.1\ Drawing file: 6492-FI(III.1)-7.dwg Jan 25, 2002 - 10:49am Image:base cropped 4.jpg Image:water-viewport.gif Image:water-workspace.gif



REINSTATE PREVIOUSLY  
EXISTING DRAINAGE  
REGIME

LOCALLY MOUND  
SURFACE TO MIMIC  
SURROUNDING LANDFORM

REMOVE CONTAINMENT  
BERM

REMOVE SUMP #1 BERM

REMOVE  
DAMS 1 AND 2


LEGEND:

— NON-CONTACT WATER DIVERSION



SCALE 1:7500



PROJECT				<b>De Beers</b>			
TITLE				<b>SNAP LAKE DIAMOND PROJECT NORTH PILE SEQUENCING PLAN - CLOSURE</b>			
DESIGN		CADD		CHECK		REVIEW	
SIB		12/11/01					
PROJECT No. 012-6492		FILE No.		SCALE AS SHOWN		REV. 0	
 <b>Golder Associates</b> Saskatoon, Saskatchewan				<b>FIGURE: III.1-7</b>			