

Source:
http://wiki.nwtresearch.com/GetFile.aspx?File=ResearchGuide%2fnorthslave_map.gif



Indian and Northern
Affairs Canada

Affaires indiennes
et du Nord Canada

Developer's Assessment Report

Regional Study Area

Job No: 350047-004

Filename:

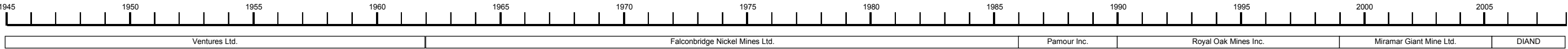
GIANT MINE

Date:
October 2010

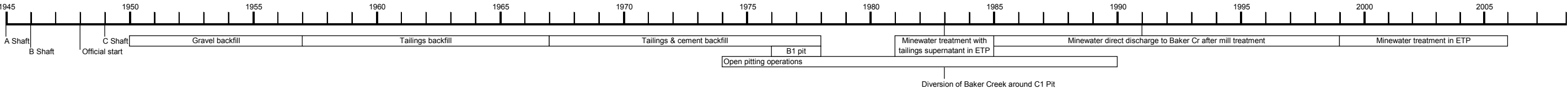
Approved:
TB

Figure: **3.4.3**

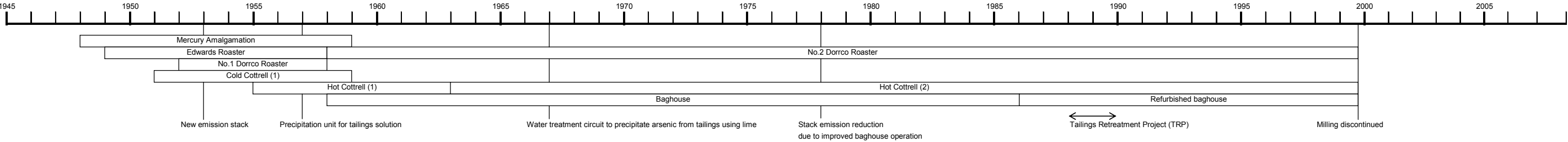
Mine Ownership



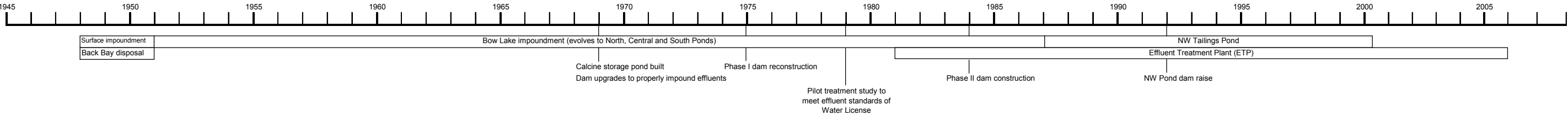
Mine Development



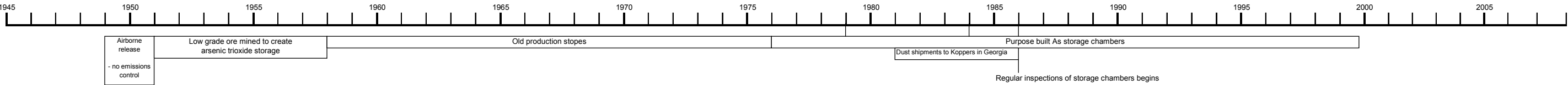
Processing



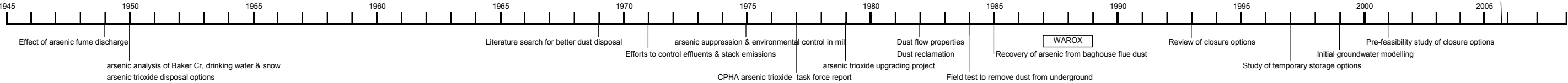
Tailings Disposal

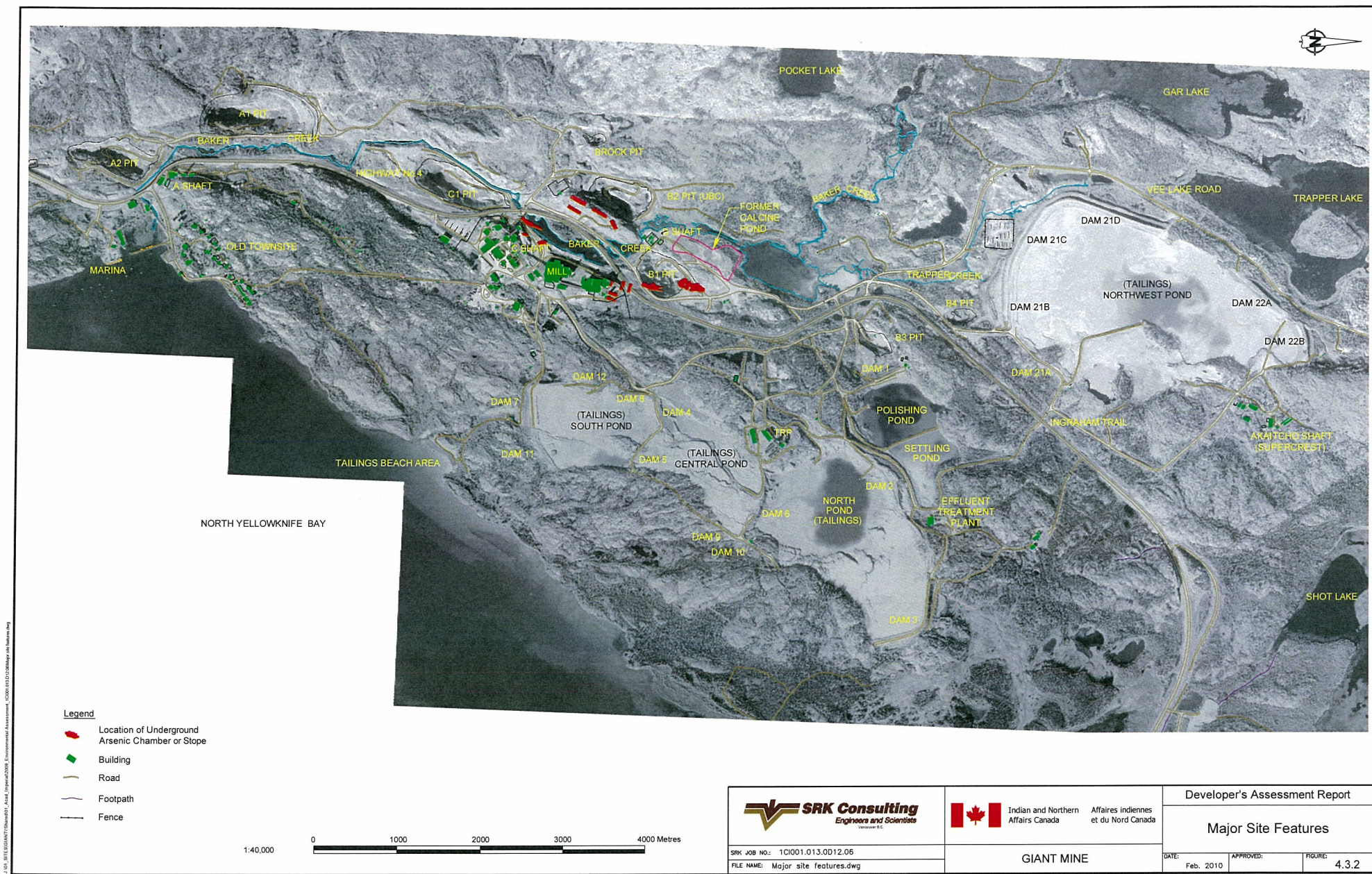


Arsenic Trioxide Disposal

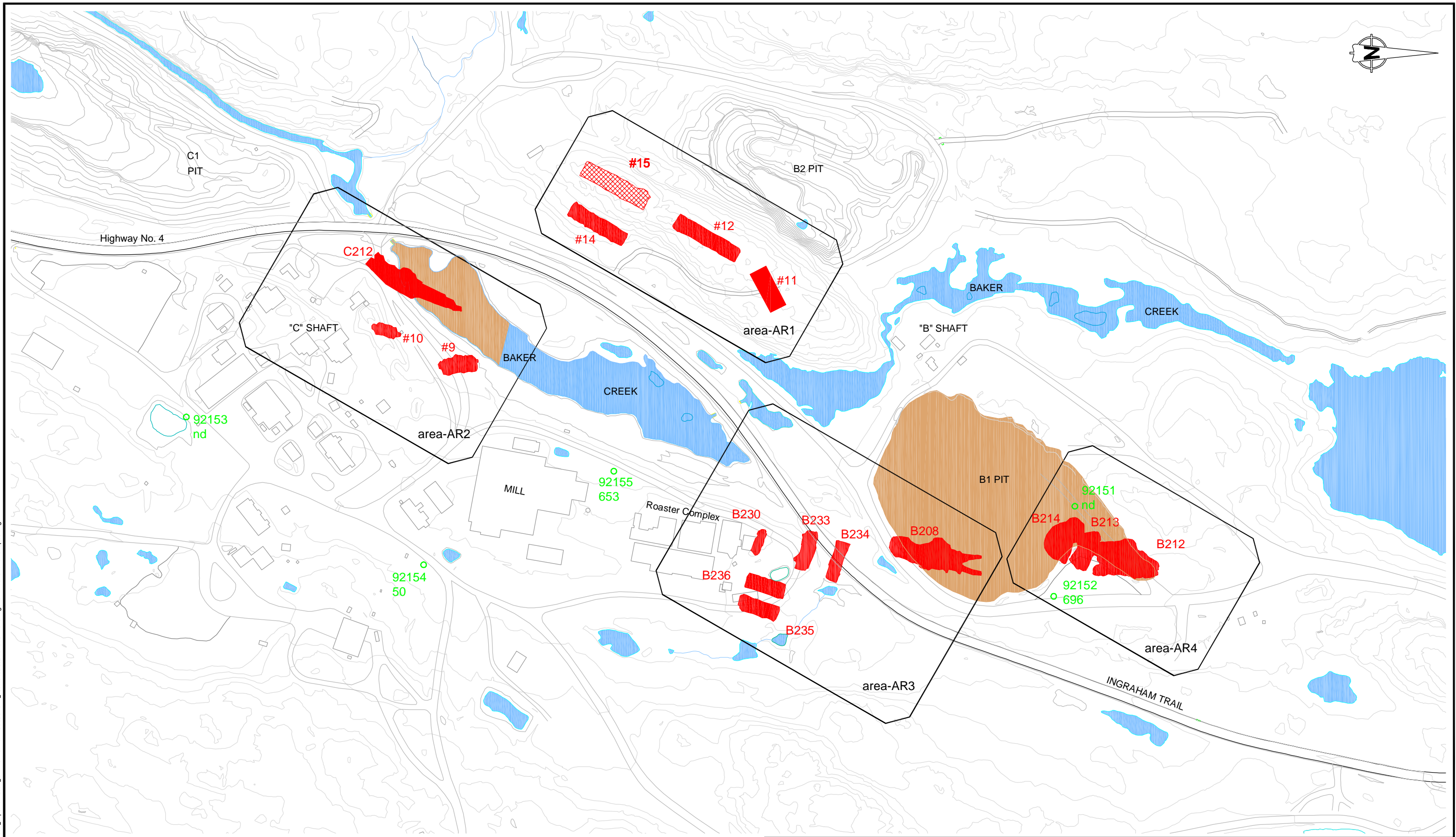


Arsenic Related Studies








J:\01_SITES\GIANT\Shared\01_Accd_Inperial\2009_Environmental_Assessment\1C1001.013\012\06_Dust Storage Chambers and Stopes.dwg

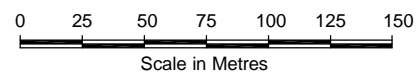


LEGEND

-  Chamber or Stope containing Arsenic Trioxide dust
-  Chamber empty
-  Backfill Pit or Fill

Notes:

2.5m Contour interval
2003 Aerial survey base map.



SRK JOB NO.: 1C1001.013.0D12.06
FILE NAME: Dust Storage Chambers and Stopes.dwg



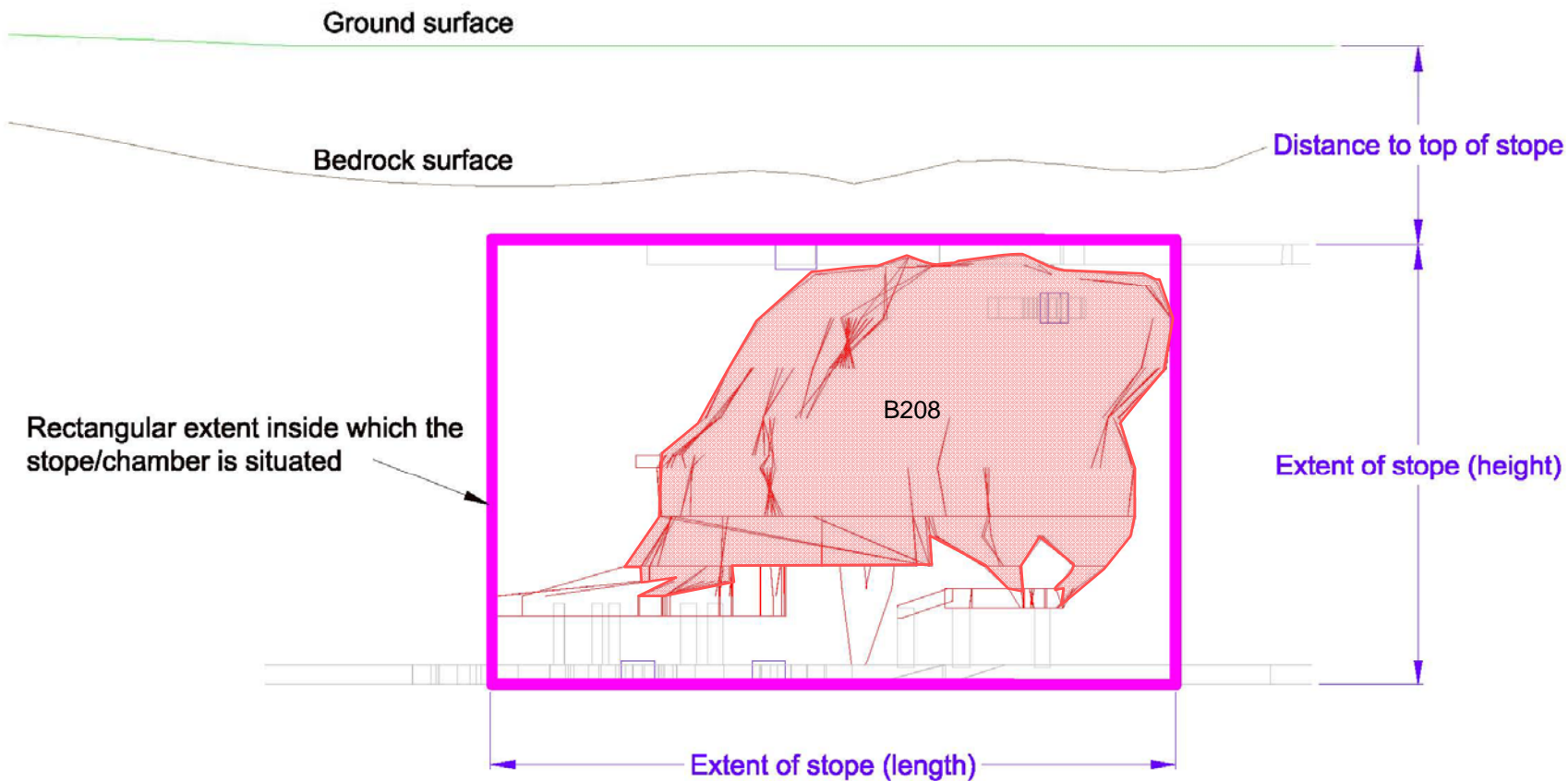
Indian and Northern Affairs Canada
Affaires indiennes et du Nord Canada

GIANT MINE

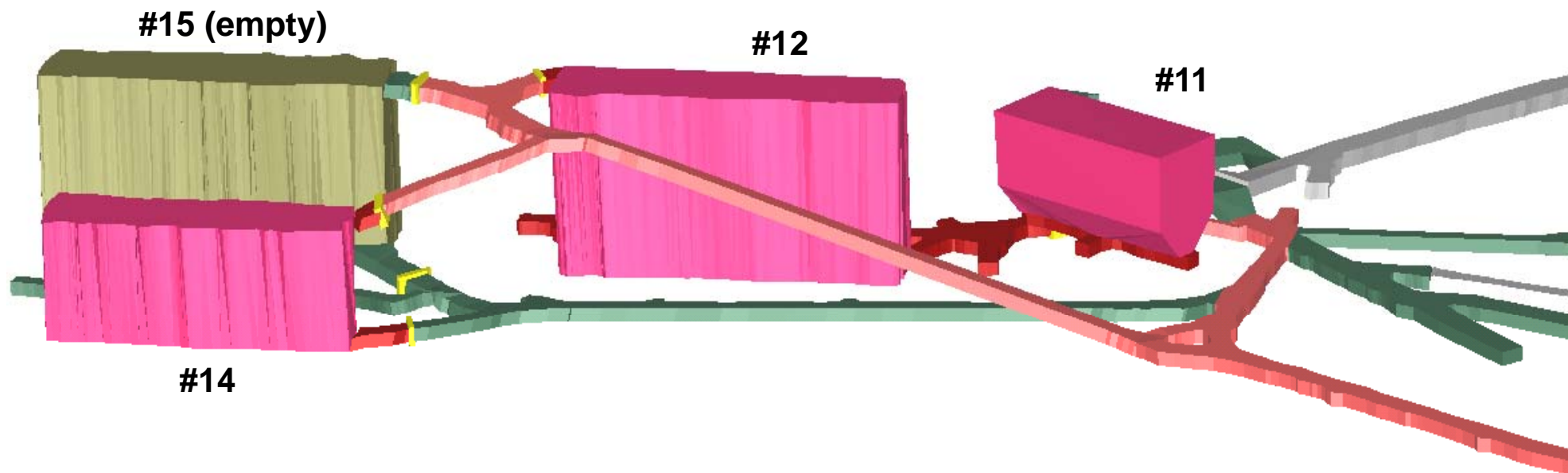
Developer's Assessment Report

Dust Storage Chambers and Stopes

DATE: Nov. 2009	APPROVED: KYK	FIGURE: 5.1.1
--------------------	------------------	------------------



 <p>SRK Consulting Engineers and Scientists VANCOUVER</p>	 <p>Indian and Northern Affairs Canada Affaires indiennes et du Nord Canada</p>	Developer's Assessment Report	
		Schematic of Chamber and Stope Dimensions	
<p>Job No: 1CI001.013.D12.06</p> <p>Filename: Fig 5.3.1_StopeBlock_20100913.ppt</p>	Giant Mine		<p>Date: Nov. 2009</p> <p>Approved: KYK</p> <p>Figure: 5.1.3</p>



Notes:

- 1) Empty chamber #15 added to figure for clarity
- 2) Red tunnels and raises contain arsenic distribution lines or arsenic trioxide dust.



Job No: 1CI001.013.D12.06

Filename: Fig 5.1.4-8_3D-Stopes_200901103.ppt



Indian and Northern Affairs Canada
Affaires indiennes et du Nord Canada

Developer's Assessment Report

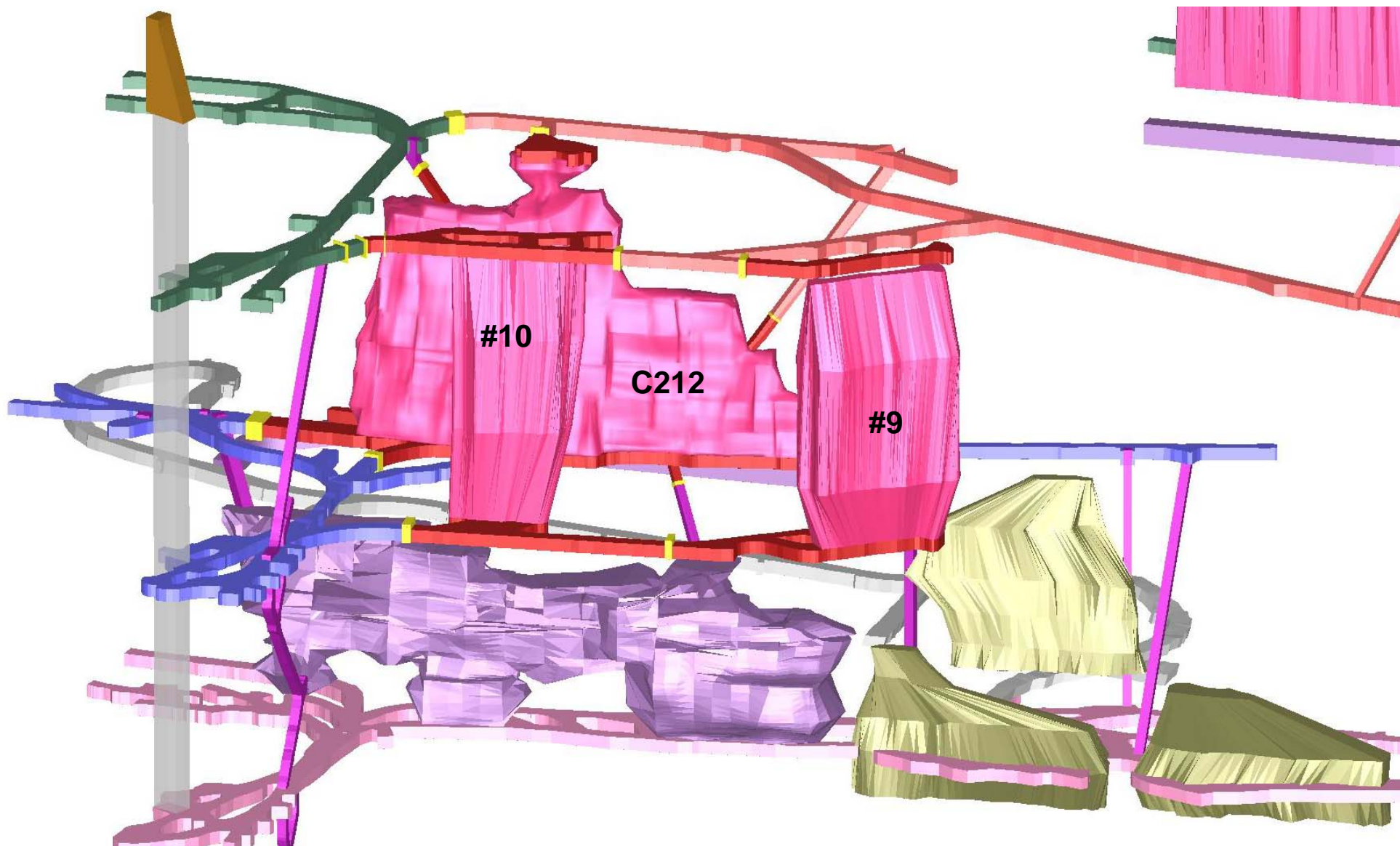
3D View of AR1 Chambers

Giant Mine

Date:
Nov. 2009

Approved:
KYK

Figure:
5.1.4



Note:

Red tunnels and raises contain arsenic distribution lines or arsenic trioxide dust.



Job No: 1CI001.013.D12.06

Filename: Fig 6.4.1_Frozen Soil B1_20090831.ppt



Indian and Northern Affairs Canada
Affaires indiennes et du Nord Canada

Giant Mine

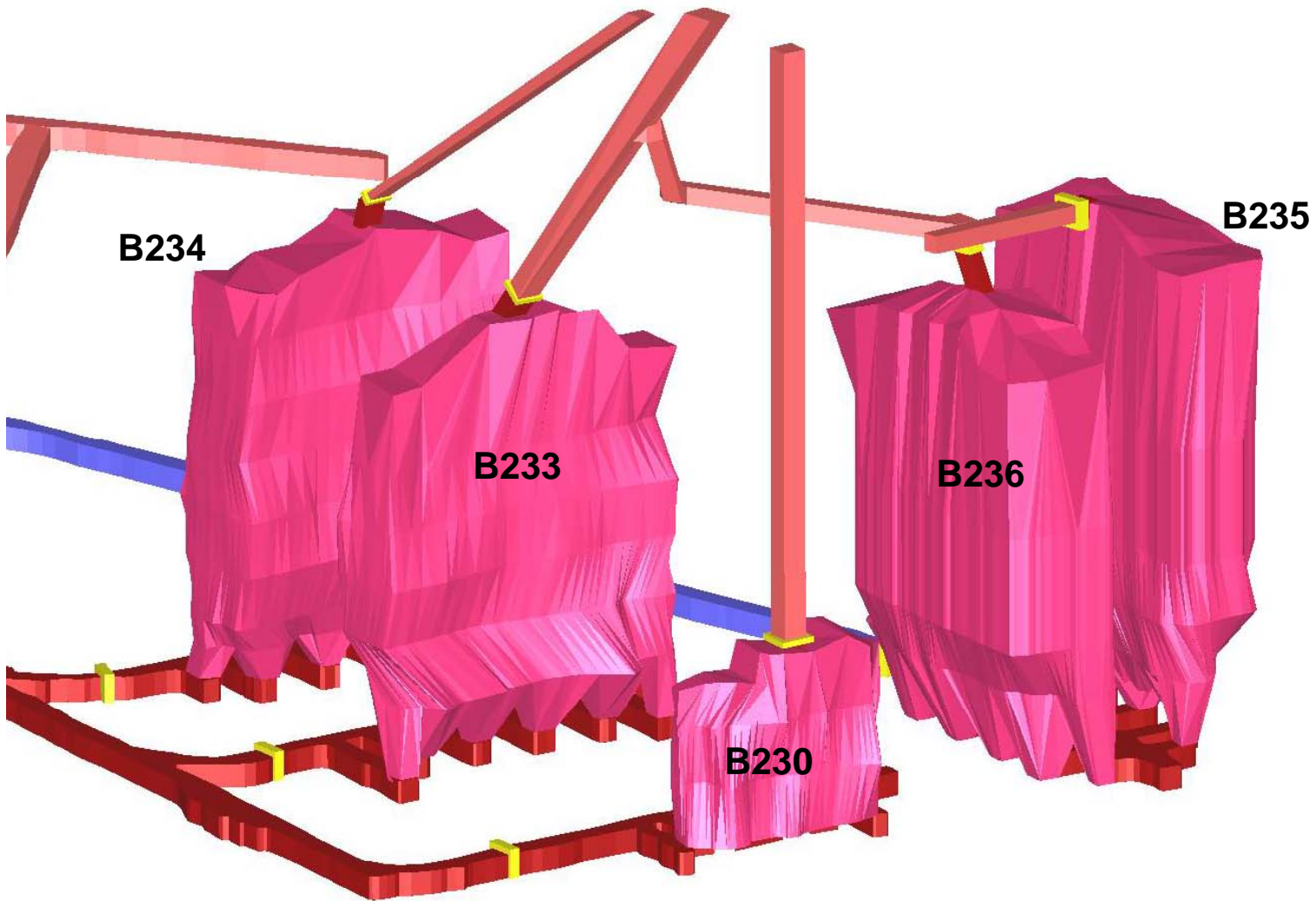
Developer's Assessment Report

3D View of AR2 Chambers and Stopes

Date:
Nov. 2009

Approved:
KYK

Figure:
5.1.5



Note:

Red tunnels and raises contain arsenic distribution lines or arsenic trioxide dust.



Job No: 1CI001.013.D12.06

Filename: Fig 6.4.1_Frozen Soil B1_20090831.ppt



Indian and Northern Affairs Canada
Affaires indiennes et du Nord Canada

Giant Mine

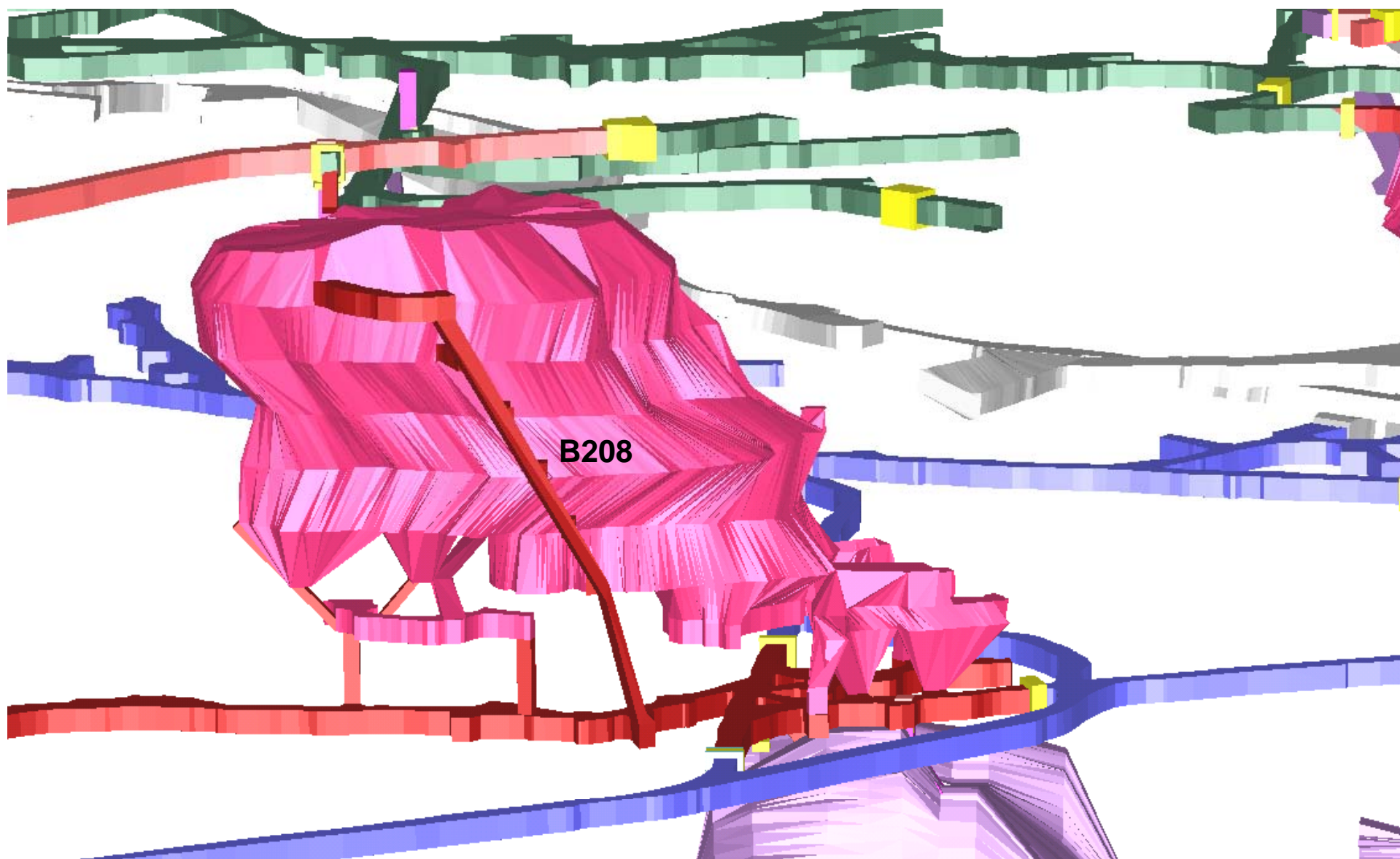
Developer's Assessment Report

3D View of AR3 Chambers
(without B208)

Date:
Nov. 2009

Approved:
KYK

Figure:
5.1.6



Note:

Red tunnels and raises contain arsenic distribution lines or arsenic trioxide dust.



Job No: 1CI001.013.D12.06

Filename: Fig 6.4.1_Frozen Soil B1_20090831.ppt



Indian and Northern
Affairs Canada Affaires indiennes
et du Nord Canada

Developer's Assessment Report

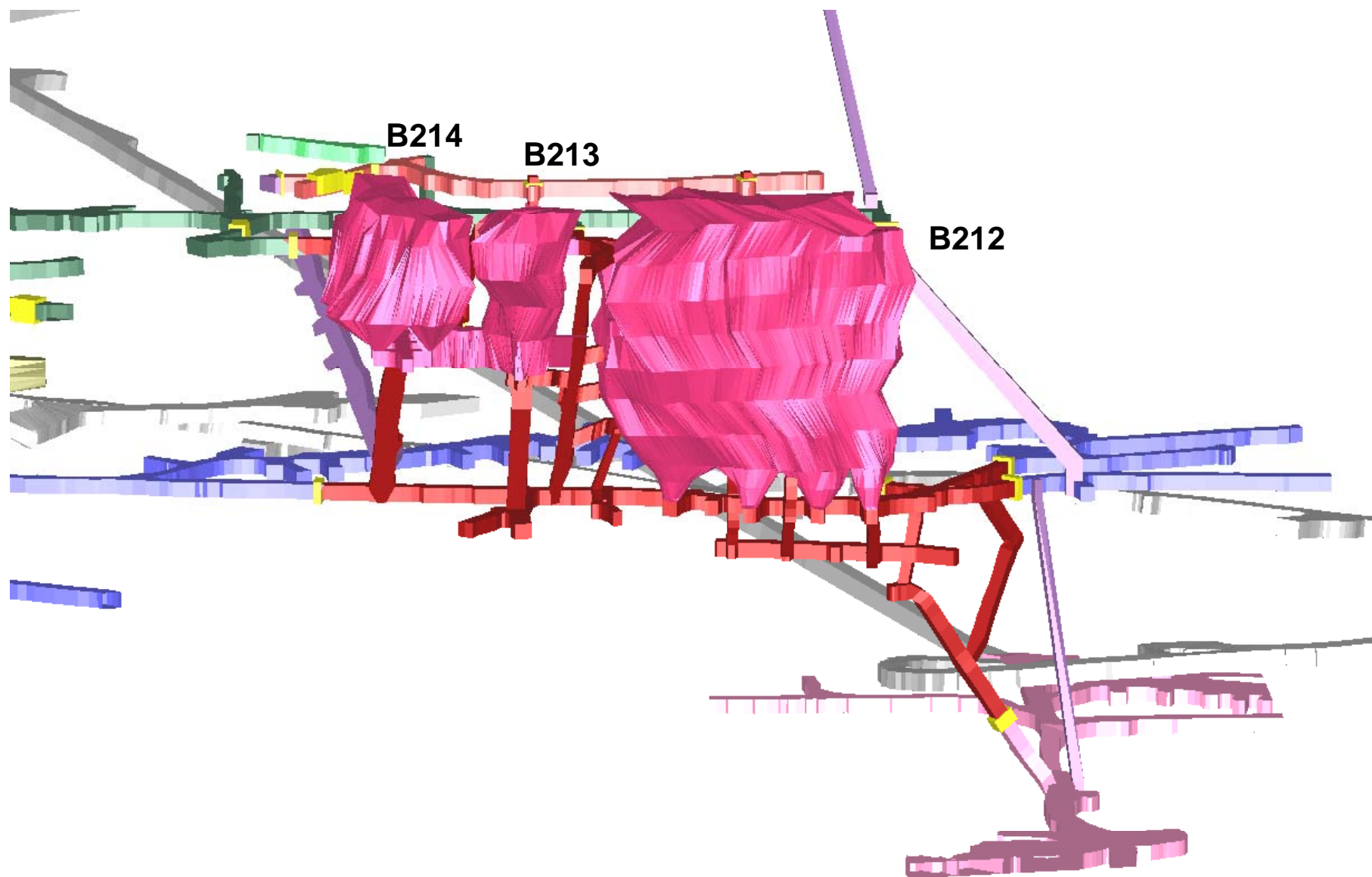
3D View of Stope B208

Giant Mine

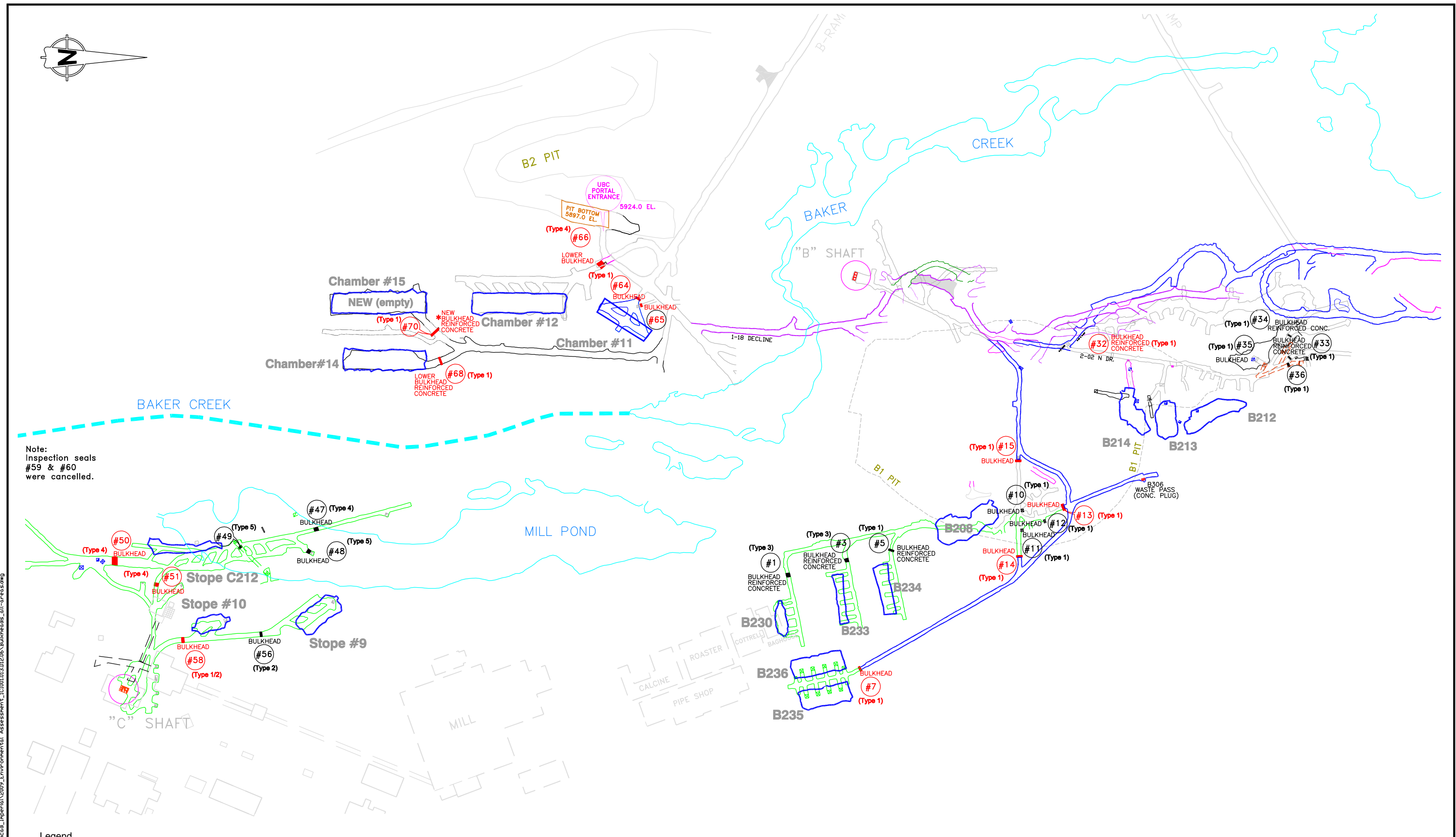
Date:
Nov. 2009

Approved:
KYK

Figure:
5.1.7

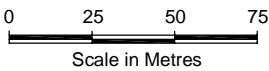


J:\01_SITES\GIANT\Shared\01_Acad_Inperia\2009_Environmental_Assessment\1C1001.013.D12.06_Bulkheads_all-areas.dwg



Note:
Inspection seals
#59 & #60
were cancelled.

- Legend
- Accessible Lower Bulkhead
 - Non-accessible Lower Bulkhead
 - Lower Bulkhead Design Type



 SRK Consulting <i>Engineers and Scientists</i> Vancouver B.C.	 Indian and Northern Affairs Canada Affaires indiennes et du Nord Canada	Developer's Assessment Report		
		Lower Bulheads All Areas		
SRK JOB NO.: 1C1001.013.0D12.06		GIANT MINE		
FILE NAME: Bulkheads_all-areas.dwg				
		DATE: Nov. 2009	APPROVED: AL	FIGURE: 5.1.10