

Expected economic benefits of Prairie Creek Mine

Presented by the NWT Chamber of Commerce in relation
Canadian Zinc's proposed Prairie Creek lead/zinc/silver mine

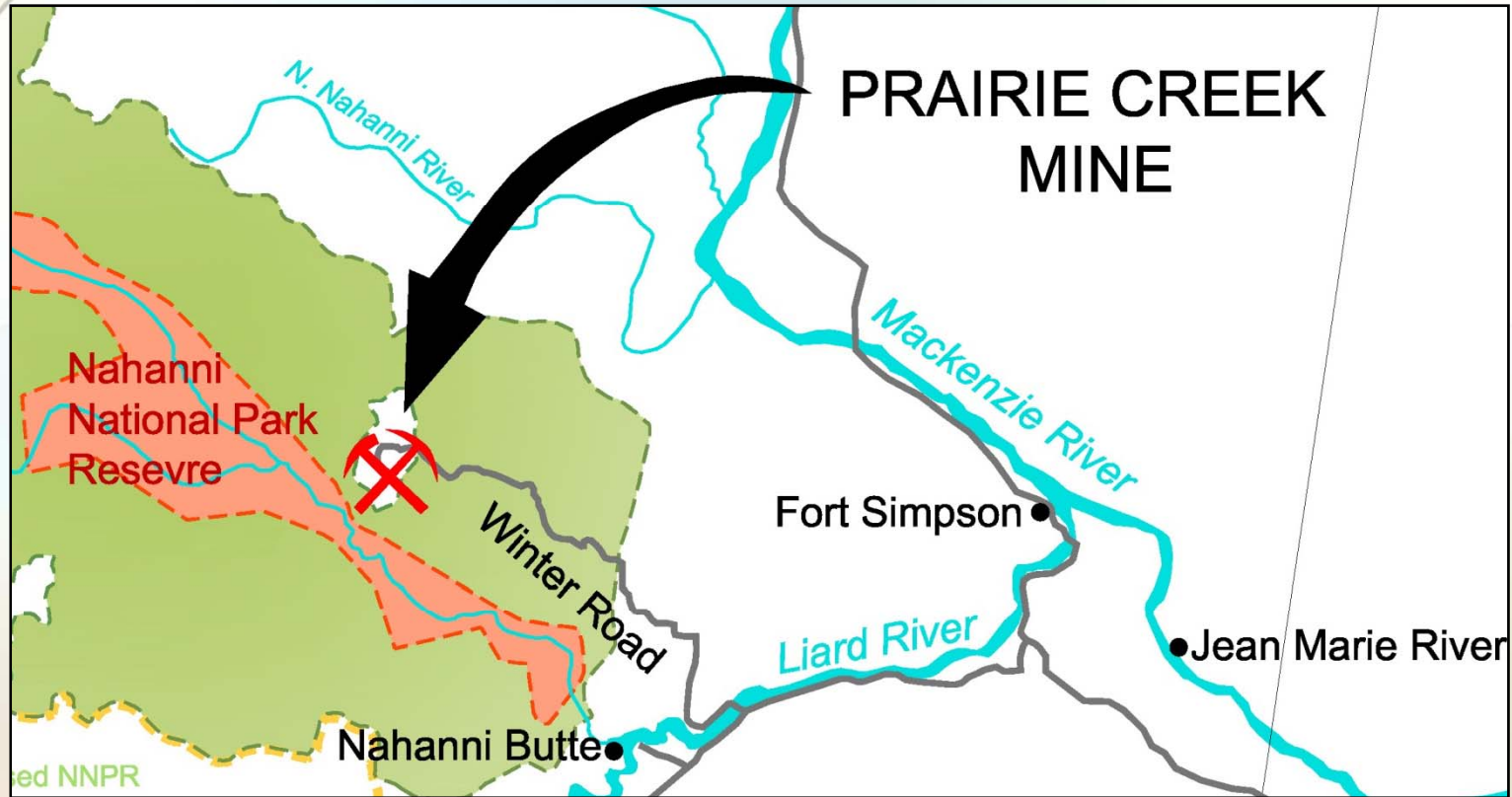


February 2009

Overview

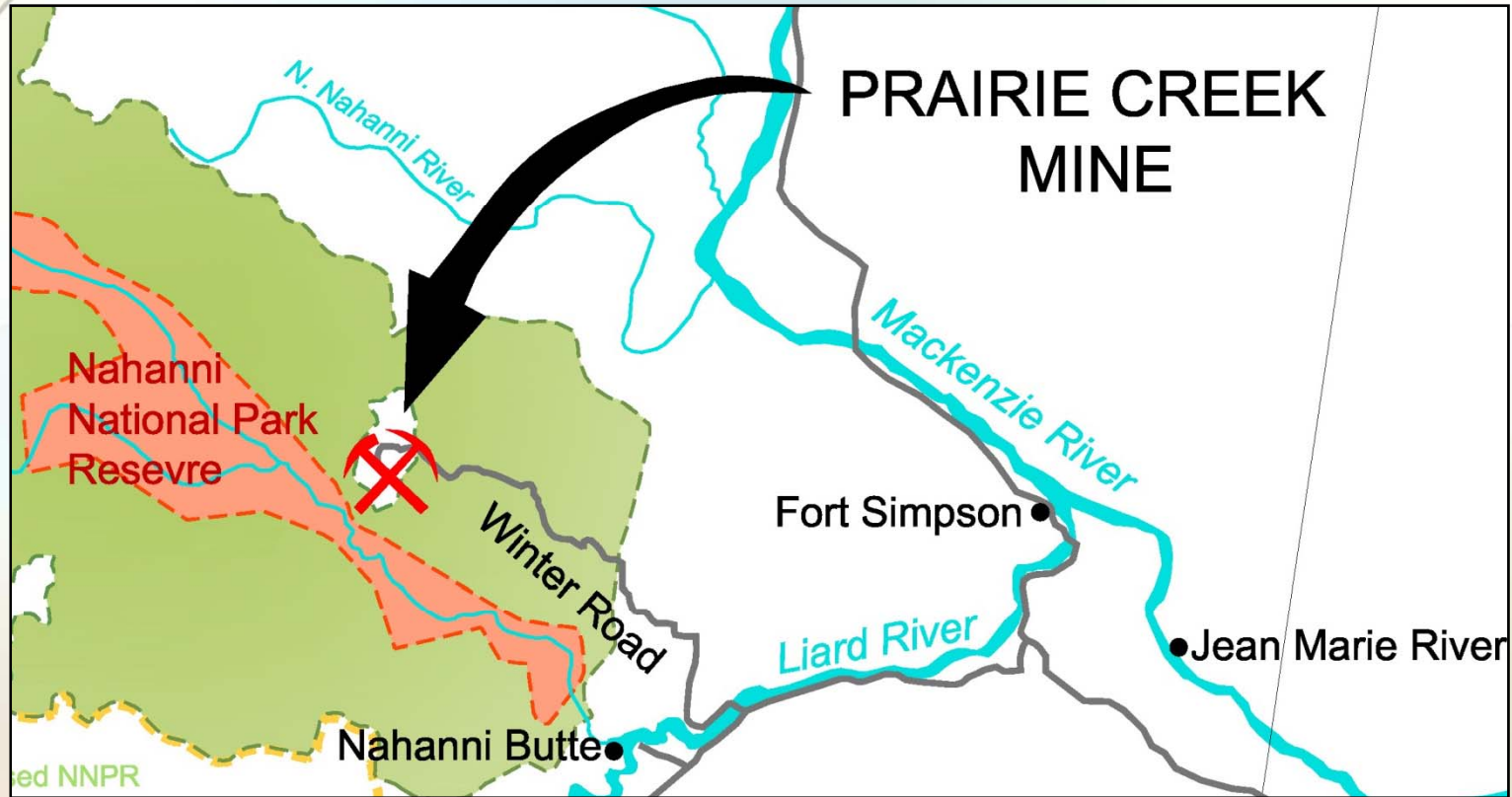
- 1) Project summary
- 2) Methodology
- 3) The impact on micro employers
- 4) The impact on small employers
- 5) The impact on medium employers
- 6) The impact on large employers
- 7) Moving forward

Prairie Creek Mine Summary



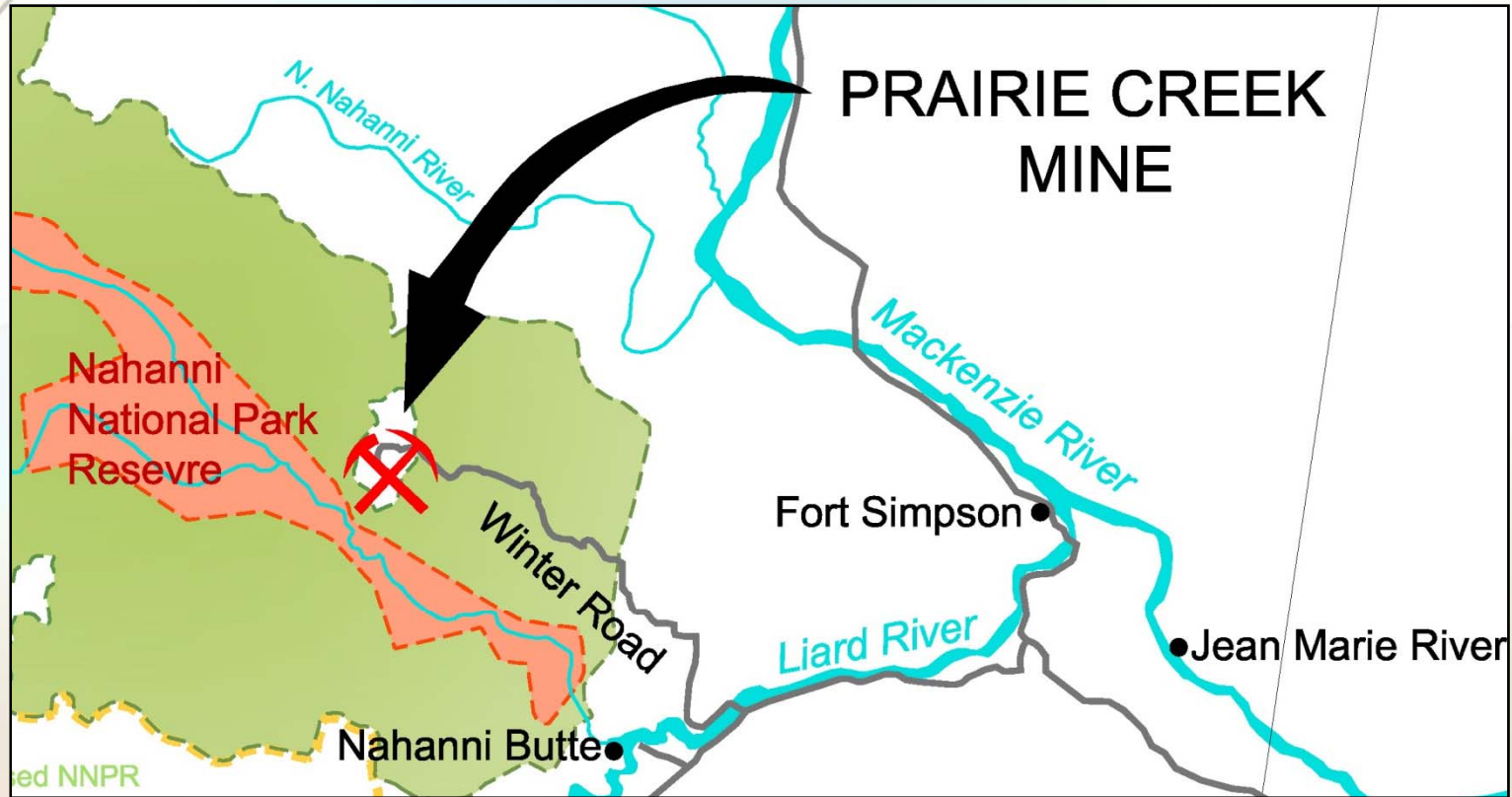
Regarding Canadian Zinc's application concerning its Prairie Creek mine, the NWT Chamber of Commerce hopes the potential economic benefits of this project are considered prior to any regulatory decision.

Prairie Creek Mine Summary



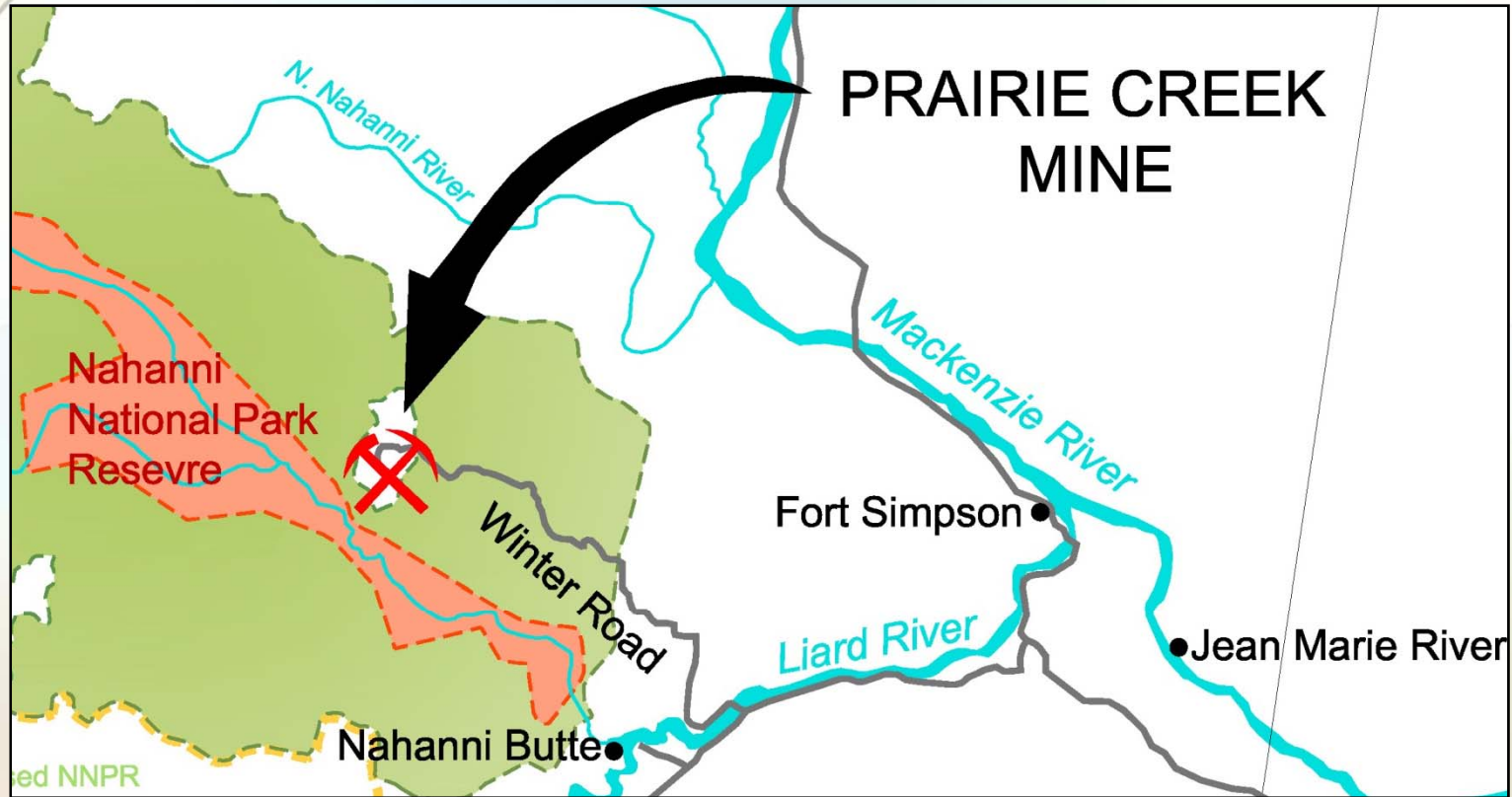
The company estimates the proposed mine, located in the Dehcho Region, would operate for a minimum of 10 years, but that could be extended with additional exploration.

Prairie Creek Mine Summary



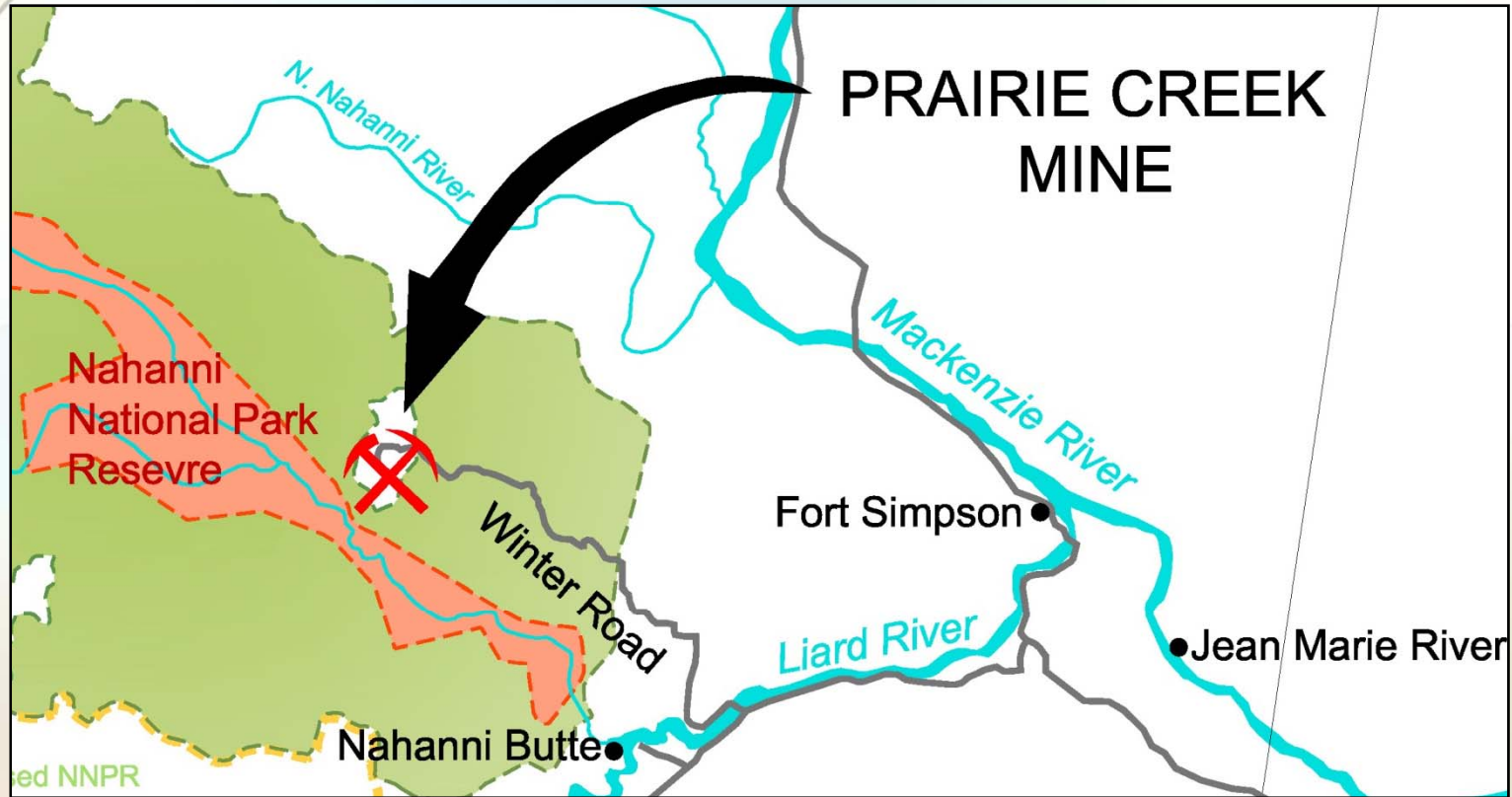
This project is expected to create 220 direct full-time jobs, of which 35% would go to Northerners.

Prairie Creek Mine Summary



Through MOUs signed with the Liidlí Kue First Nation and the Nahanni Butte Dene Band, 15% of the workforce will be aboriginal.

Prairie Creek Mine Summary



Between 2006 and 2007, Canadian Zinc invested a total of \$18.7 million exploring and developing the property.

Methodology



Prior to this regulatory review, the NWT Chamber of Commerce commissioned a survey with the assistance of Indian and Northern Affairs Canada in part to learn how business people think a project of this scope could impact their operations.

Methodology

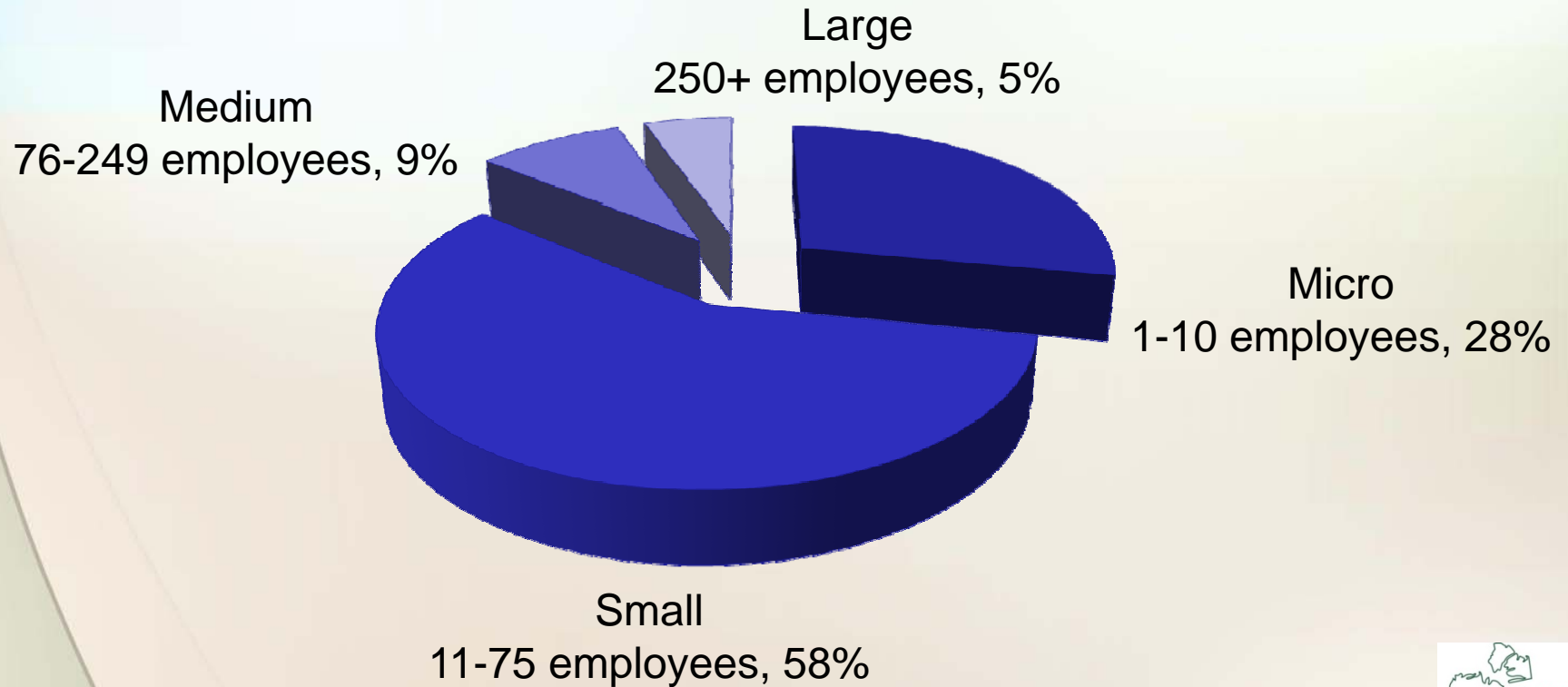
Among respondents:

- 26 operate in the Beaufort-Delta
- 33 operate in the Sahtu
- 32 operate in the Dehcho
- 39 operate in the North Slave
- 30 operate in the South Slave



Methodology

The respondent group, illustrated below, largely reflected the overall NWT business community composition, which is dominated by micro and small employers.



The impact on micro employers

Among micro employers
survey highlights included:

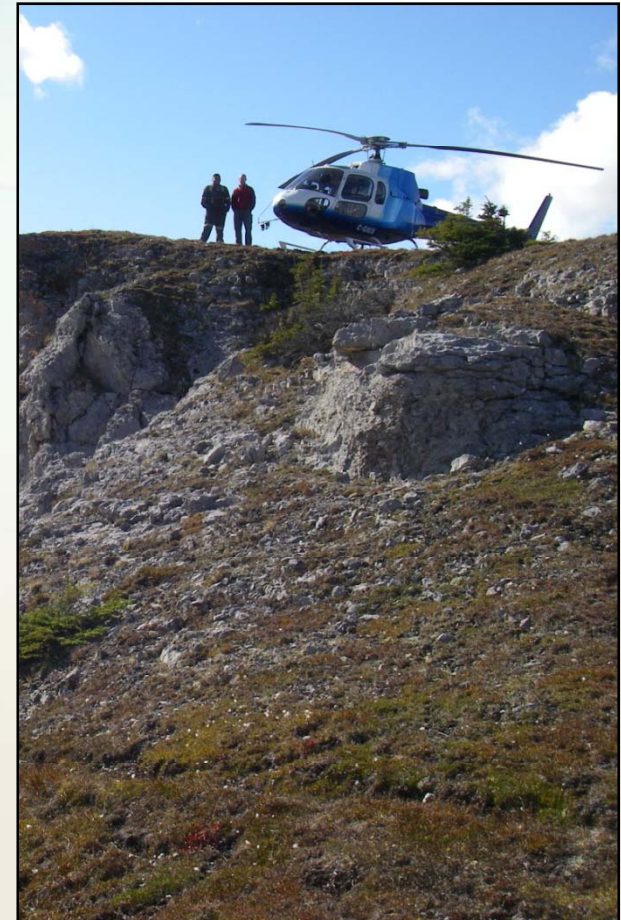
- Half said their business would grow up to 60% if they got a contract with an explorer
- 38% said their revenues and workforce would more than double with a deal with a mine
- 44% said their venture and staff would grow at least 21% simply by having a mine open in their region



The impact on small employers

Among small employers
survey highlights included:

- 52% said their business would grow at least 21% if they got a contract with an explorer
- 64% said their workforce would increase a minimum of 21% if they got a deal with a new mine
- 45% said their revenues would grow at least 21% simply by having a mine open in their region



The impact on medium employers

Among medium employers
survey highlights included:

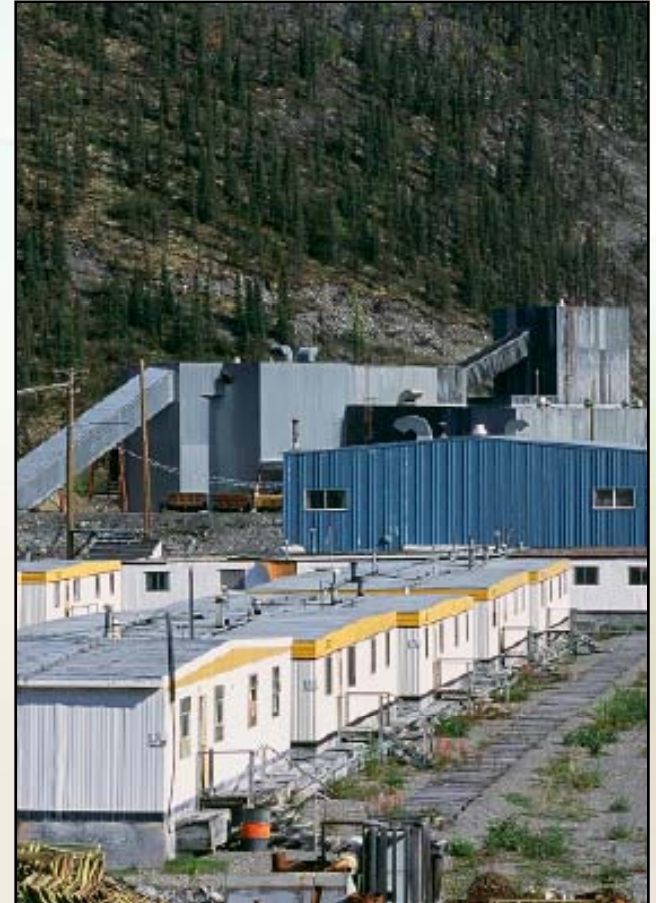
- 60% said their business would grow at least 21% if they got a contract with an explorer
- 40% said their firm would grow a minimum of 41% if they got a deal with a new mine
- 60% said their workforce would grow as much as 40% if they got a new mine as a client



The impact on large employers

Among large employers
survey highlights included:

- 33% said their business and workforce would grow at least 21% if they were contracted to the right explorer
- 33% said they'd hire 21% more people if they got a deal with a new mine
- 33% said their workforce would grow at least 21% if a mine opened in their region



Moving forward



The NWT Chamber suggests the expected economic benefits of the proposed Prairie Creek Mine be considered as part of this and any other regulatory review of the project.