



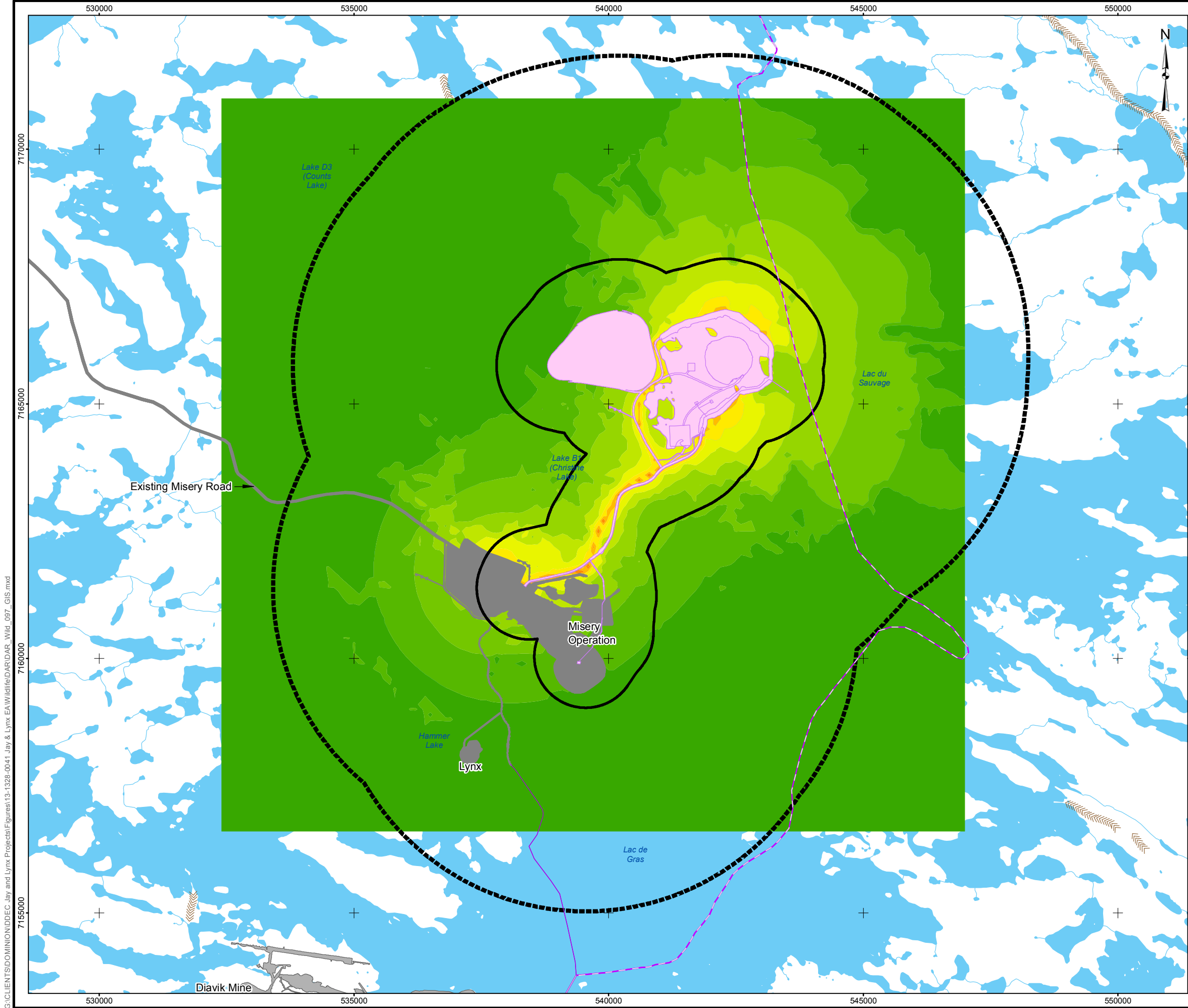
APPENDIX 13D

NOISE ASSESSMENT RESULTS AND WILDLIFE ZONES OF INFLUENCE



Maps

Map 13D-1	Noise Contours During Construction and Predicted Zones of Influence for Wildlife.....	1
Map 13D-2	Noise Contours During Open Pit Operation and Predicted Zones of Influence for Wildlife	2



LEGEND

EKATI MINE FOOTPRINT

DIAVIK MINE FOOTPRINT

PROPOSED JAY FOOTPRINT

WINTER ROAD

TIBBITT TO CONTWOYTO WINTER ROAD

NORTHERN PORTION OF TIBBITT TO CONTWOYTO WINTER ROAD

ESKER

WATERCOURSE

WATERBODY

NOISE CONTOURS (dBA)

-99 TO 35

35 TO 40

40 TO 45

45 TO 50

50 TO 55

55 TO 60

60 TO 65

65 TO 70

70 TO 75

75 TO 80

80 TO 85

85 TO 1000000

ZONE OF INFLUENCE - 1 KM

ZONE OF INFLUENCE - 5 KM

NOTES

ROAD, PIPELINES, AND POWER LINE ARRANGEMENT TO BE DETAILED AS PART OF PRE-FEASIBILITY DESIGN. APPROXIMATE CORRIDOR WIDTHS ARE SHOWN.

REFERENCE

JAY PROJECT CONCEPTUAL ENGINEERING REPORT, EKATI MINE, DOC#: 1313280041-E14037-R-REV0-4060, DATED: MAY 13, 2014
LIDAR AND BATHYMETRIC DATA OBTAINED FROM AURORA, 2013
WATER OBTAINED FROM CANVEC © NATURAL RESOURCES CANADA, 2012
DATUM: NAD83 PROJECTION: UTM ZONE 12N

DOCUMENT

DEVELOPER'S ASSESSMENT REPORT

SCALE 1:75,000

KILOMETRES

DOMINION DIAMOND

JAY PROJECT

GOLDER ASSOCIATES

PROJECT

13-1328-0041

FILE No. DAR_Wild_097_GIS

DESIGN

JV

17/07/14

GIS

DW

03/10/14

CHECK

LD

03/10/14

REVIEW

LD

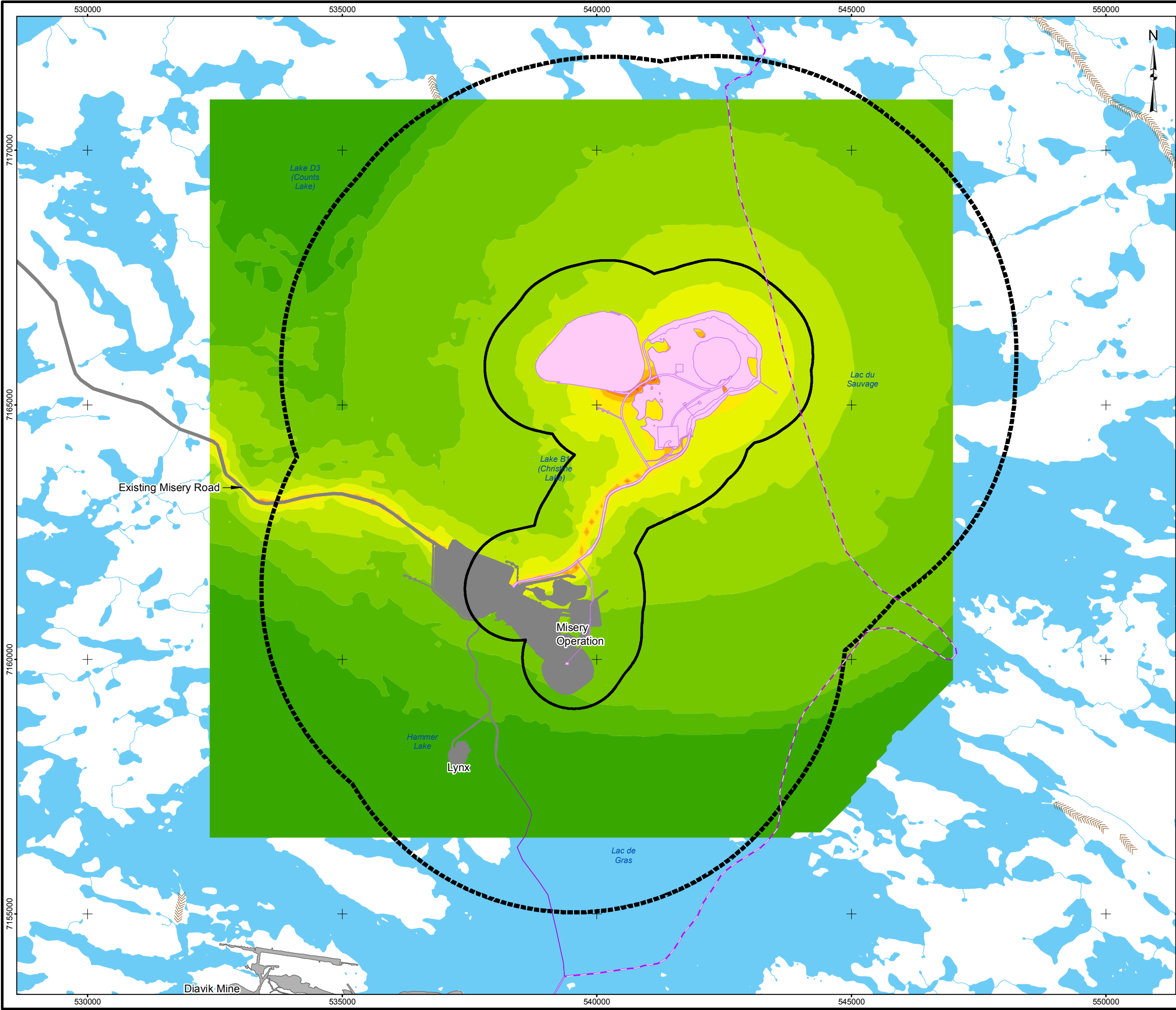
03/10/14

SCALE AS SHOWN

REV 0

MAP 13D-1

G:\CLIENTS\DOMINION\DEC_Jay and Lynx\Projects\Figures\13-1328-0041 Jay & Lynx EAW\Wildlife\Dar_Wild_098_GIS.mxd



LEGEND

- EKATI MINE FOOTPRINT
- DIABIK MINE FOOTPRINT
- PROPOSED JAY FOOTPRINT
- WINTER ROAD
- TIBBITT TO CONTWOYTO WINTER ROAD
- NORTHERN PORTION OF TIBBITT TO CONTWOYTO WINTER ROAD
- ESKER
- WATERCOURSE
- WATERBODY
- NOISE CONTOURS (dBC)**
 - 99 TO 35
 - 35 TO 40
 - 40 TO 45
 - 45 TO 50
 - 50 TO 55
 - 55 TO 60
 - 60 TO 65
 - 65 TO 70
 - 70 TO 75
 - 75 TO 80
 - 80 TO 85
 - 85 TO 1000000
- ZONE OF INFLUENCE - 1 KM
- ZONE OF INFLUENCE - 5 KM

NOTES

ROAD, PIPELINES, AND POWER LINE ARRANGEMENT TO BE DETAILED AS PART OF PRE-FEASIBILITY DESIGN. APPROXIMATE CORRIDOR WIDTHS ARE SHOWN.

REFERENCE

JAY PROJECT CONCEPTUAL ENGINEERING REPORT, EKATI MINE, DOC#: 1313280041-E14037-R-REV0-4060, DATED: MAY 13, 2014
LIDAR AND BATHYMETRIC DATA OBTAINED FROM AURORA, 2013
WATER OBTAINED FROM CANVEC © NATURAL RESOURCES CANADA, 2012
DATUM: NAD83 PROJECTION: UTM ZONE 12N

DOCUMENT

DEVELOPER'S ASSESSMENT REPORT

20

0

20

SCALE 1:75,000 KILOMETRES

PROJECT

DOMINION DIAMOND

JAY PROJECT NORTHWEST TERRITORIES, CANADA

TITLE

NOISE CONTOURS DURING OPEN PIT OPERATION AND PREDICTED ZONES OF INFLUENCE FOR WILDLIFE

Golder Associates

PROJECT	13-1328-0041	FILE No. DAR_Wild_098_GIS
DESIGN	JV	17/07/14
GIS	DW	03/10/14
CHECK	LD	03/10/14
REVIEW	LD	03/10/14

MAP 13D-2