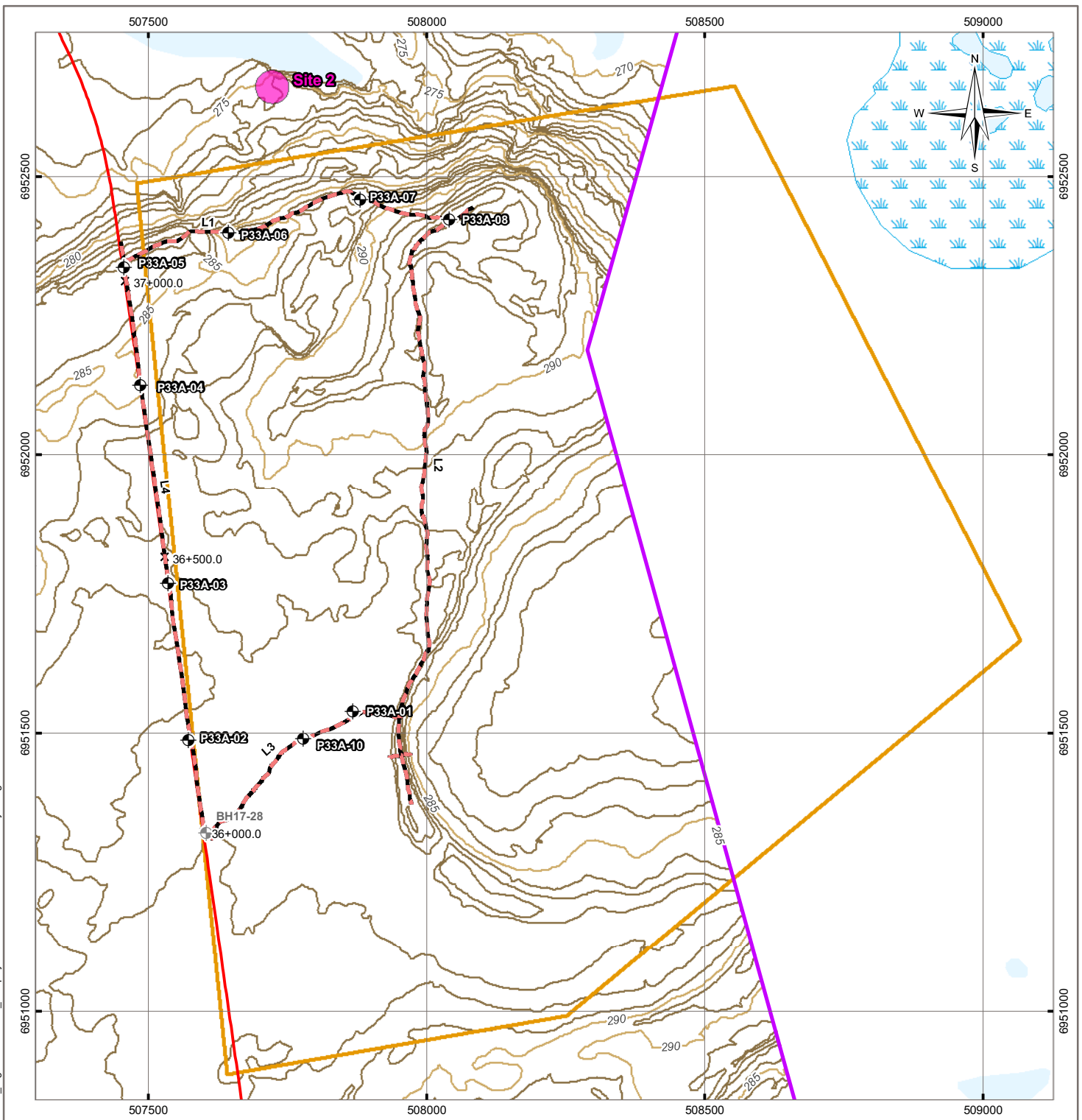


APPENDIX E

INTERPRETED GEOPHYSICAL PROFILES



Q:\Vancouver\GIS\ENGINEERING\YARC\YARC03107-01\Maps\YARC03107-01_FigureP38A-001_Geophysics.mxd modified 9/27/2017 by morgana.zondervan

LEGEND

- Borehole
- Drill Hole is by Others*
- Proposed TASR Alignment
- Ground Penetrating Radar Line
- 2 km Swath
- Archaeological Site Buffer
- Bedrock Prospect
- Index Contour (5 m)
- Intermediate Contour (1 m)
- Wetland

NOTES
 Base data source:
 CanVec Topo Data
 *Boreholes locations provided by
 GNWT, source Stantec 2017
 winter drilling program

STATUS
 ISSUED FOR REVIEW

2017 GEOTECHNICAL INVESTIGATION TASR PROSPECTS

Prospect 33A Geophysical Site Plan

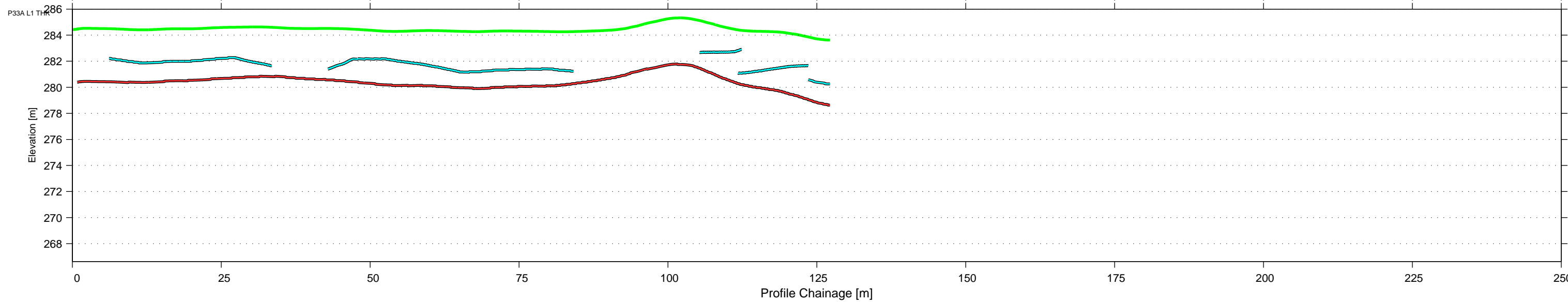
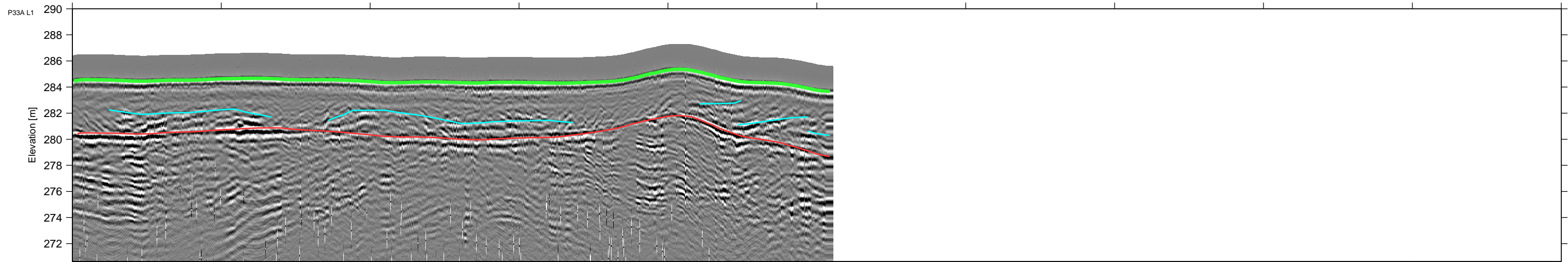
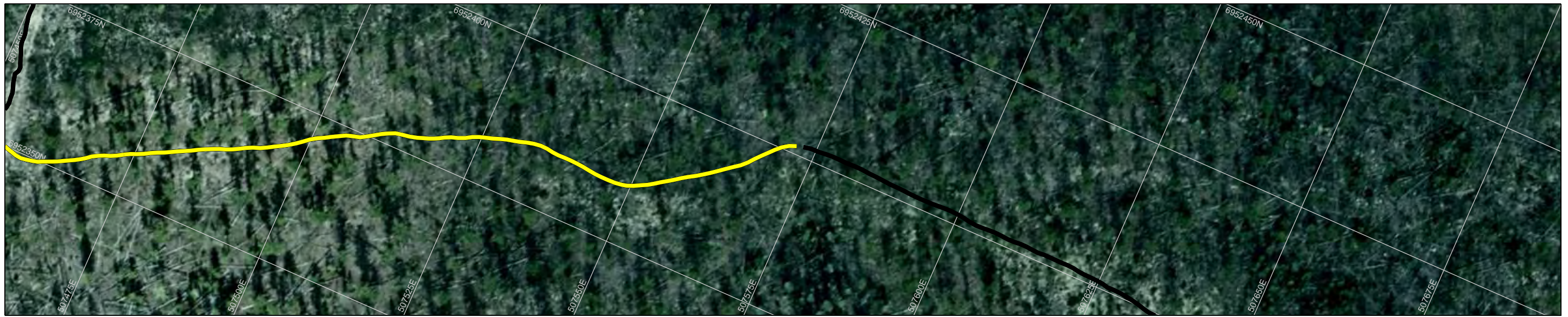
PROJECTION UTM Zone 11	DATUM NAD83
Scale: 1:10,000	
FILE NO. YARC03107-01_FigureP38A-001_Geophysics.mxd	
OFFICE Tl-VANC	DWN MEZ
CKD SL	APVD NP
REV 0	
DATE September 27, 2017	PROJECT NO. ENG.YARC03107-01

CLIENT

TETRA TECH

Figure P33A-001

NAD83
UTMz11
XY: 1:656
Z: 1:300.0
VE: 2.19



LEGEND

- Plotted Data Collection Tracks
- Ground Surface
- Interpreted Bedrock Reflector
- - Interpreted Other Bedrock Reflector
- Interpreted Other Overburden Reflector

BOREHOLE LEGEND

- █ GRAVEL
- █ SAND
- █ SILT
- █ CLAY
- █ TOPSOIL
- █ BEDROCK
- █ PEAT

CLIENT

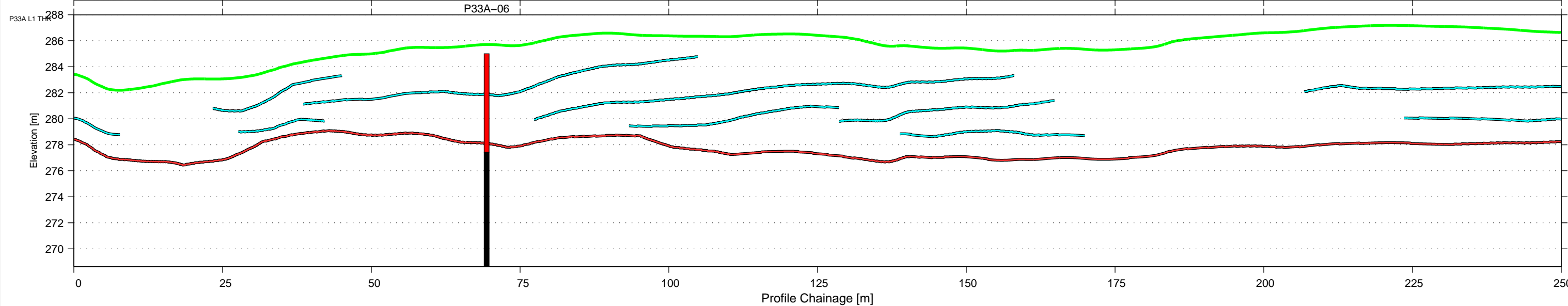
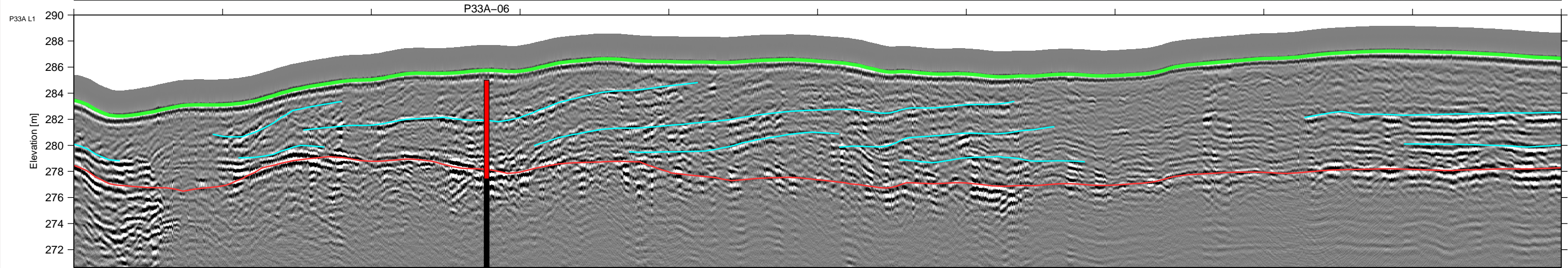


**2017 Geophysical Investigation
TASR Granular**

**P33A
100 MHz GPR Data
Line 1**

Project No. ENG.YARC03107-01	DWN JA	CHKD NSP	APVD NSP	REV 0
OFFICE Edmonton	DATE August 30, 2017			

P33A-L1-01




LEGEND

- Plotted Data Collection Tracks
- Ground Surface
- Interpreted Bedrock Reflector
- - Interpreted Other Bedrock Reflector
- Interpreted Other Overburden Reflector


BOREHOLE LEGEND

- █ GRAVEL
- █ SAND
- █ SILT
- █ CLAY
- █ TOPSOIL
- █ BEDROCK
- █ PEAT

CLIENT



Northwest Territories



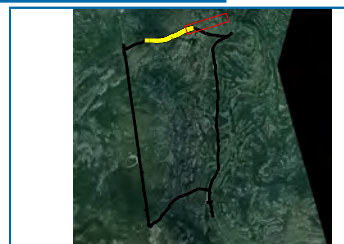
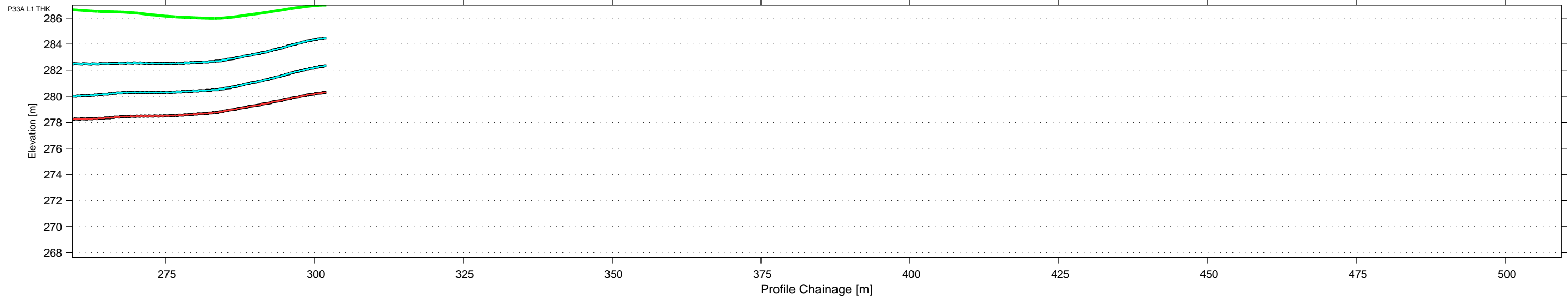
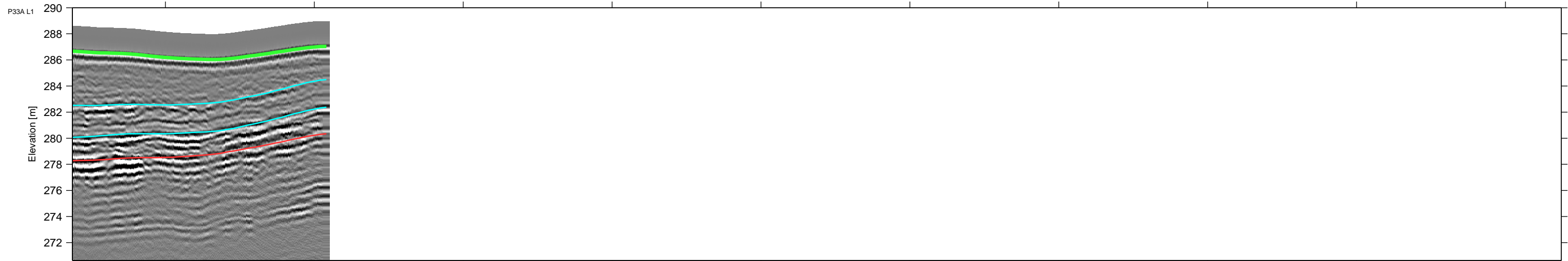
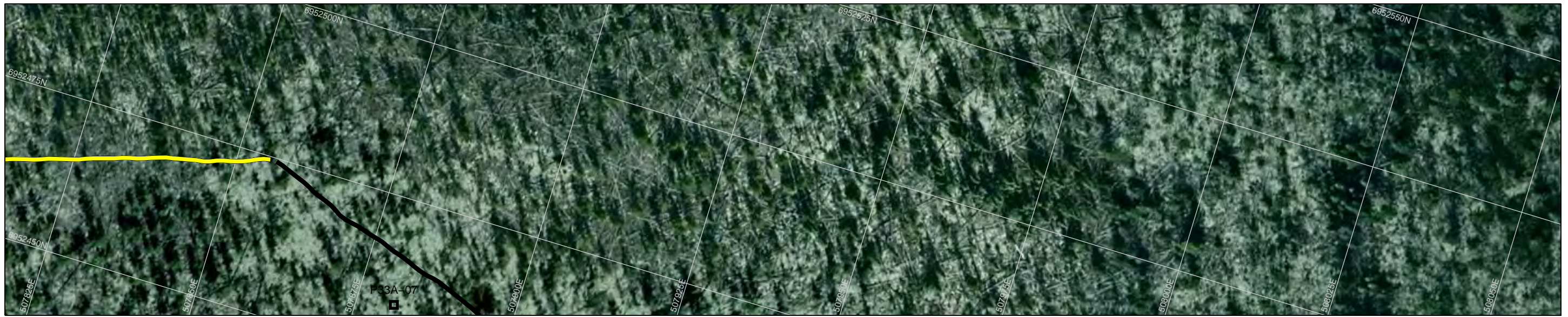
TETRA TECH

**2017 Geophysical Investigation
TASR Granular**

**P33A
100 MHz GPR Data
Line 1**

Project No. ENG.YARC03107-01	DWN JA	CHKD NSP	APVD NSP	REV 0	P33A-L1-02.1
OFFICE Edmonton	DATE August 30, 2017				

NAD83
UTMz11
XY: 1:656
Z: 1:300.0
VE: 2.19



LEGEND

- Plotted Data Collection Tracks
- Ground Surface
- Interpreted Bedrock Reflector
- - Interpreted Other Bedrock Reflector
- Interpreted Other Overburden Reflector

BOREHOLE LEGEND

- █ GRAVEL
- █ SAND
- █ SILT
- █ CLAY
- █ TOPSOIL
- █ BEDROCK
- █ PEAT

CLIENT

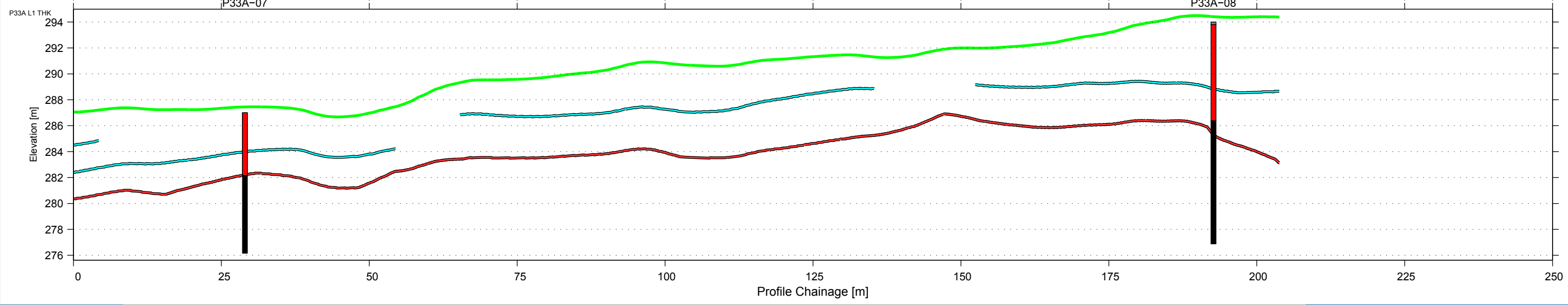
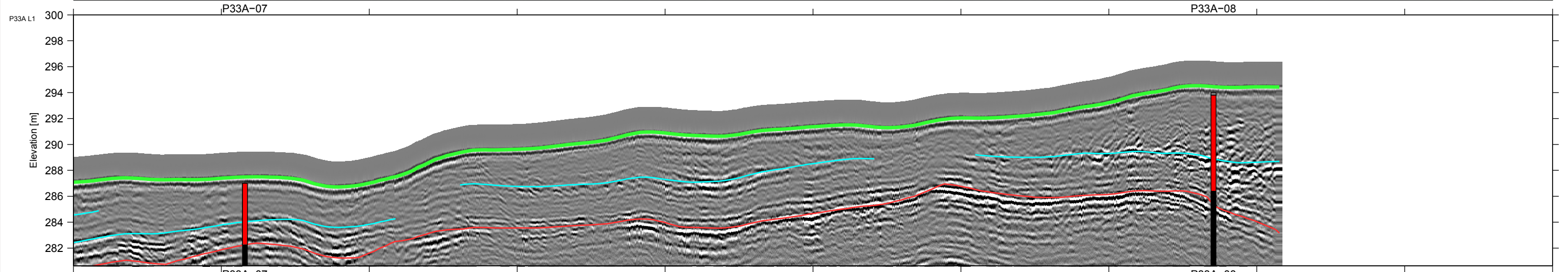


**2017 Geophysical Investigation
TASR Granular**

**P33A
100 MHz GPR Data
Line 1**

Project No. ENG.YARC03107-01	DWN JA	CHKD NSP	APVD NSP	REV 0	P33A-L1-02.2
OFFICE Edmonton	DATE August 30, 2017				

NAD83
UTMz11
XY: 1:656
Z: 1:300.0
VE: 2.19



LEGEND

- Plotted Data Collection Tracks
- Ground Surface
- Interpreted Bedrock Reflector
- Interpreted Other Bedrock Reflector
- Interpreted Other Overburden Reflector

BOREHOLE LEGEND

- █ GRAVEL
- █ SAND
- █ SILT
- █ CLAY
- █ TOPSOIL
- █ BEDROCK
- █ PEAT

CLIENT

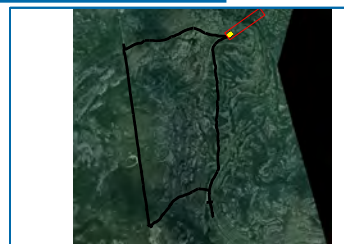
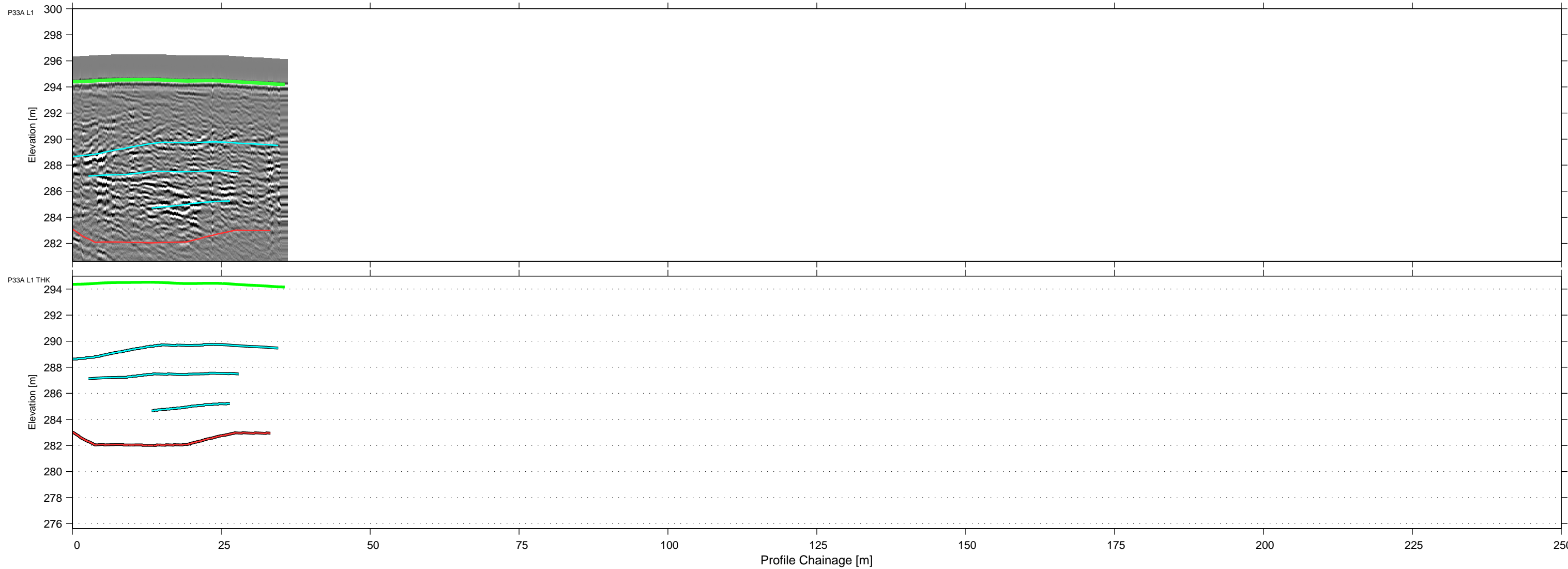


**2017 Geophysical Investigation
TASR Granular**

**P33A
100 MHz GPR Data
Line 1**

Project No. ENG.YARC03107-01	DWN JA	CHKD NSP	APVD NSP	REV 0	P33A-L1-04
Office Edmonton	DATE August 30, 2017				

NAD83
UTMz11
XY: 1:656
Z: 1:300.0
VE: 2.19



LEGEND

- Plotted Data Collection Tracks
- Ground Surface
- Interpreted Bedrock Reflector
- - Interpreted Other Bedrock Reflector
- Interpreted Other Overburden Reflector

BOREHOLE LEGEND

- █ GRAVEL
- █ SAND
- █ SILT
- █ CLAY
- █ TOPSOIL
- █ BEDROCK
- █ PEAT

CLIENT

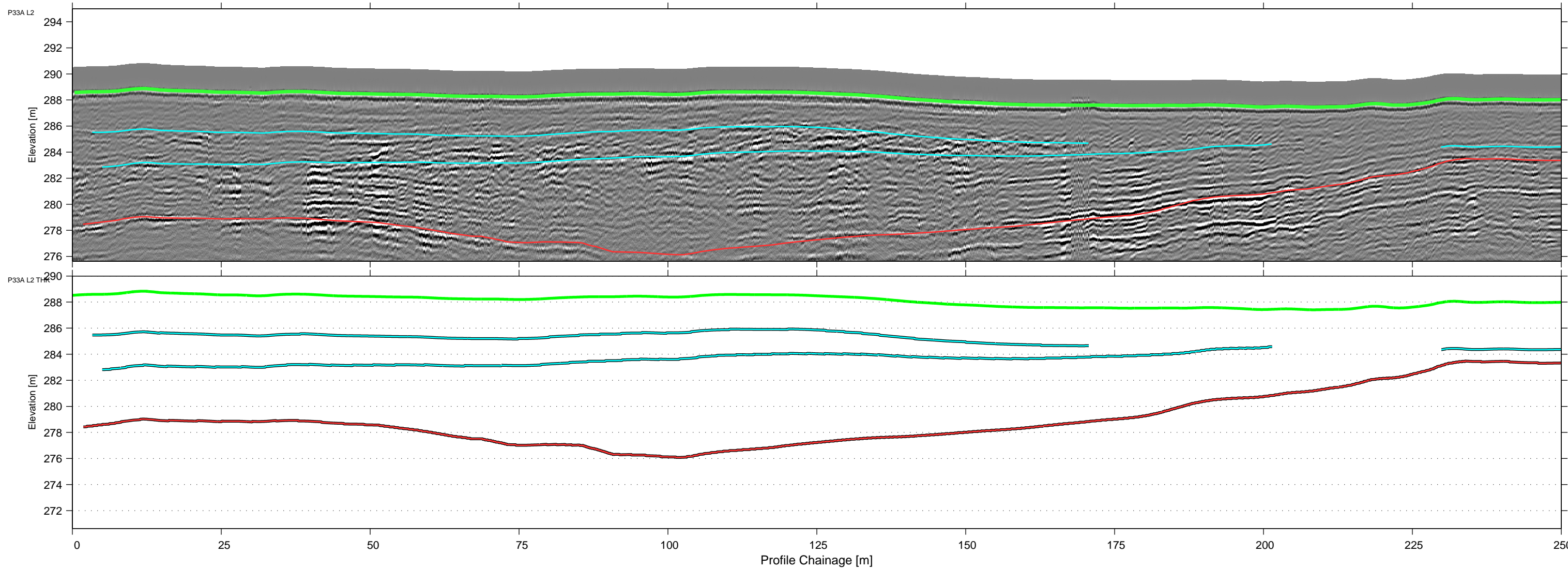
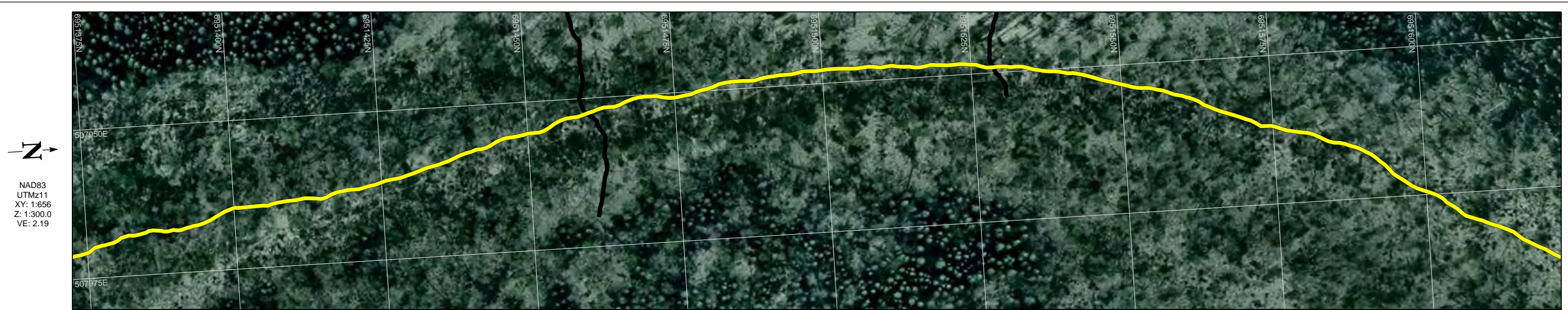


**2017 Geophysical Investigation
TASR Granular**

**P33A
100 MHz GPR Data
Line 1**

Project No. ENG.YARC03107-01	DWN JA	CHKD NSP	APVD NSP	REV 0
OFFICE Edmonton	DATE August 30, 2017			

P33A-L1-05



LEGEND

- Plotted Data Collection Tracks
- Ground Surface
- Interpreted Bedrock Reflector
- - Interpreted Other Bedrock Reflector
- Interpreted Other Overburden Reflector

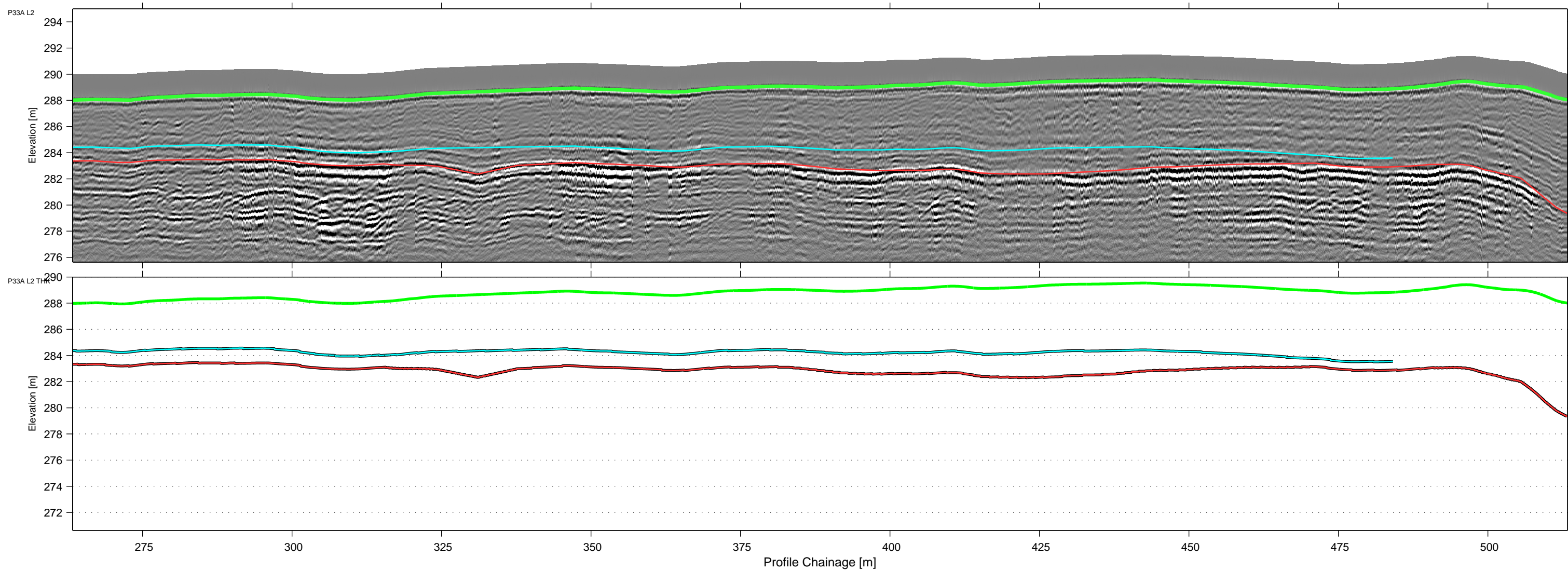
BOREHOLE LEGEND

- █ GRAVEL
- █ SAND
- █ SILT
- █ CLAY
- █ TOPSOIL
- █ BEDROCK
- █ PEAT

CLIENT



2017 Geophysical Investigation TASR Granular					
P33A 100 MHz GPR Data Line 2					
Project No. ENG.YARC03107-01	DWN JA	CHKD NSP	APVD NSP	REV 0	P33A-L2.1
OFFICE Edmonton	DATE August 30, 2017				



LEGEND

	Plotted Data Collection Tracks
	Ground Surface
	Interpreted Bedrock Reflector
	Interpreted Other Bedrock Reflector
	Interpreted Other Overburden Reflector

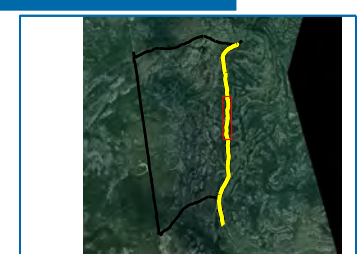
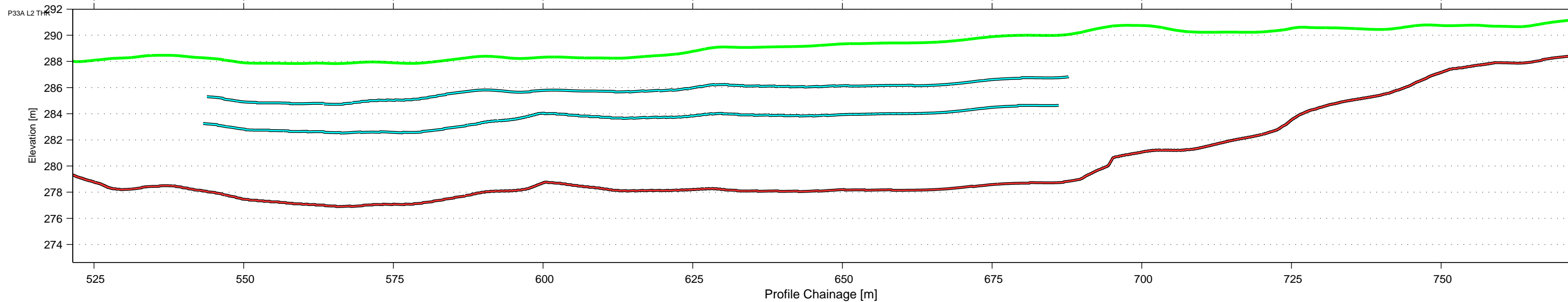
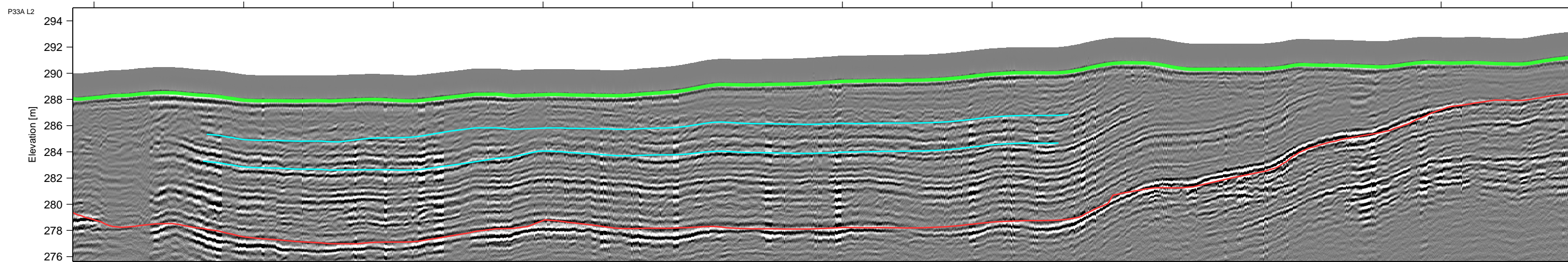
BOREHOLE LEGEND

	GRAVEL
	SAND
	SILT
	CLAY
	TOPSOIL
	BEDROCK
	PEAT

CLIENT



2017 Geophysical Investigation TASR Granular					
P33A 100 MHz GPR Data Line 2					
Project No. ENG.YARC03107-01	DWN JA	CHKD NSP	APVD NSP	REV 0	P33A-L2.2
OFFICE Edmonton	DATE August 30, 2017				



LEGEND

- Plotted Data Collection Tracks
- Ground Surface
- Interpreted Bedrock Reflector
- Interpreted Other Bedrock Reflector
- Interpreted Other Overburden Reflector

BOREHOLE LEGEND

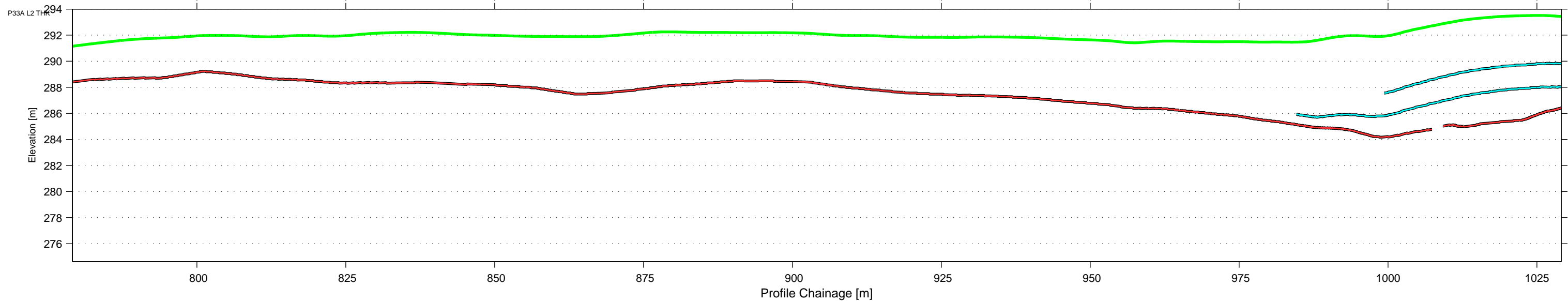
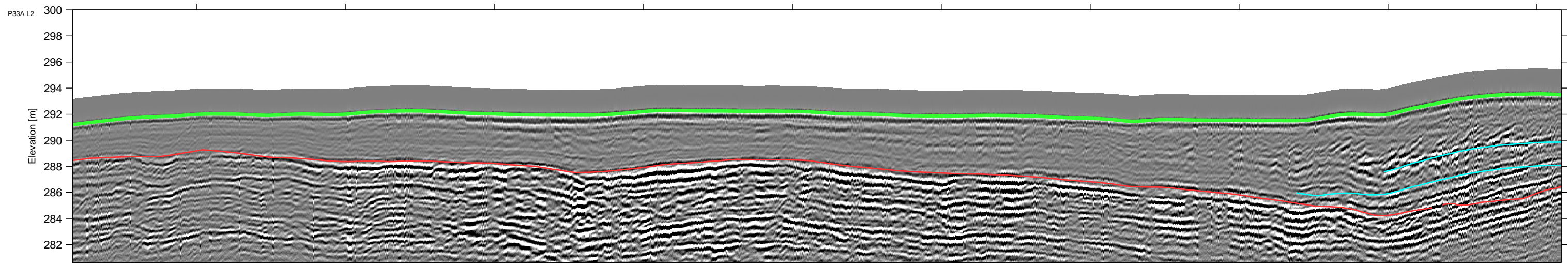
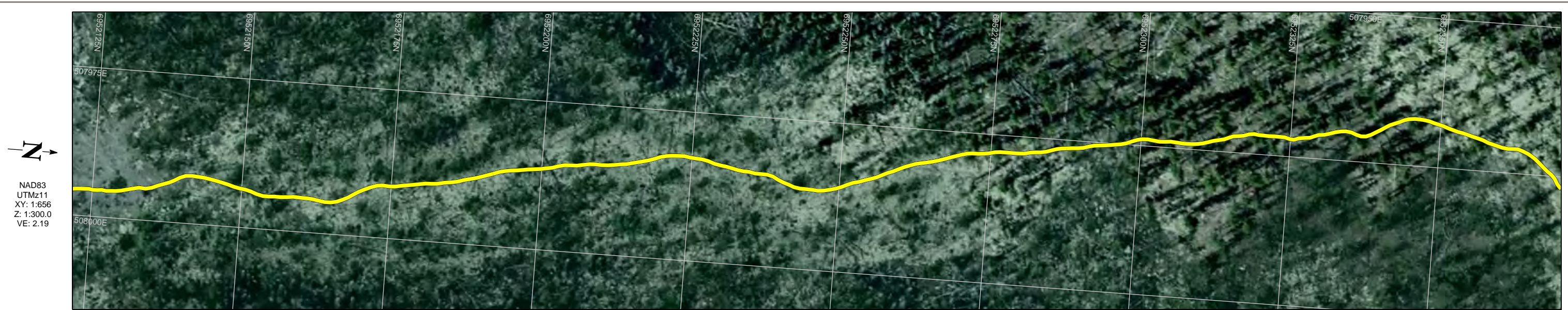
- GRAVEL
- SAND
- SILT
- CLAY
- TOPSOIL
- BEDROCK
- PEAT

CLIENT

**2017 Geophysical Investigation
TASR Granular**

**P33A
100 MHz GPR Data
Line 2**

Project No. ENG.YARC03107-01	DWN JA	CHKD NSP	APVD NSP	REV 0	P33A-L2.3
OFFICE Edmonton	DATE August 30, 2017				



LEGEND

- Plotted Data Collection Tracks
- Ground Surface
- Interpreted Bedrock Reflector
- - Interpreted Other Bedrock Reflector
- Interpreted Other Overburden Reflector

BOREHOLE LEGEND

- █ GRAVEL
- █ SAND
- █ SILT
- █ CLAY
- █ TOPSOIL
- █ BEDROCK
- █ PEAT

CLIENT



**2017 Geophysical Investigation
TASR Granular**

**P33A
100 MHz GPR Data
Line 2**

Project No. ENG.YARC03107-01	DWN JA	CHKD NSP	APVD NSP	REV 0	P33A-L2.4
OFFICE Edmonton	DATE August 30, 2017				