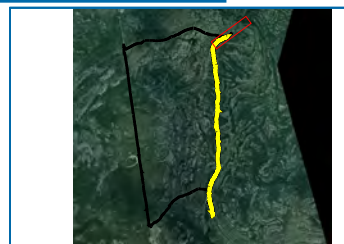
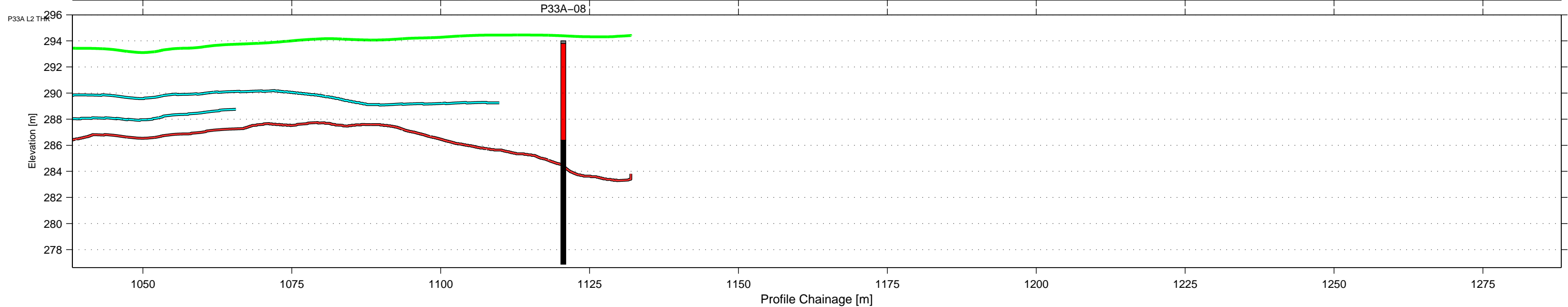
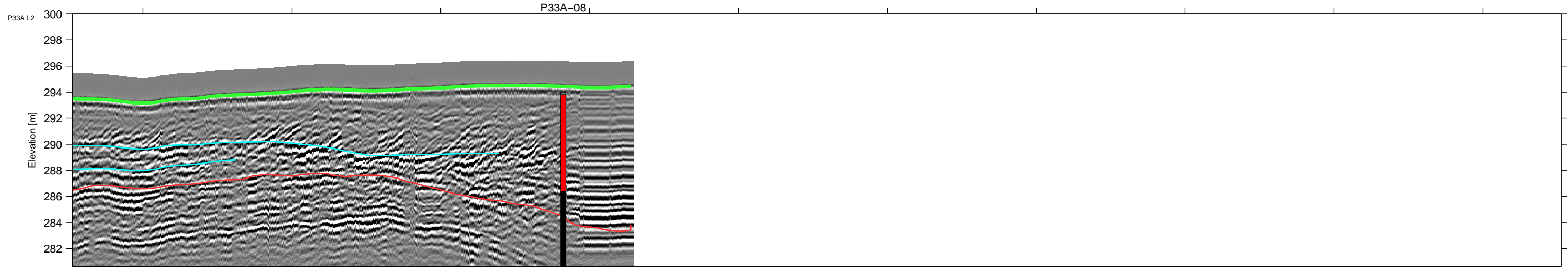
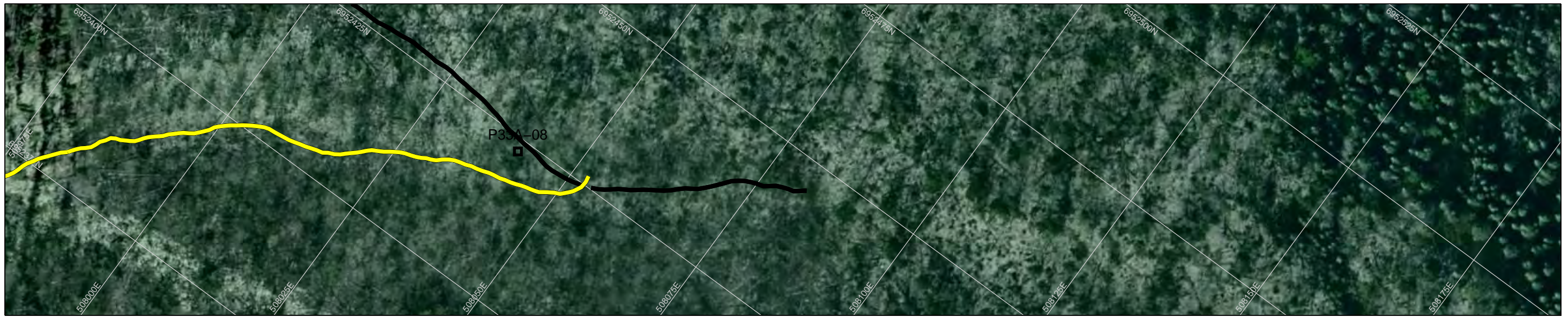


NAD83
UTMz11
XY: 1:656
Z: 1:300.0
VE: 2.19



LEGEND

- Plotted Data Collection Tracks
- Ground Surface
- Interpreted Bedrock Reflector
- Interpreted Other Bedrock Reflector
- Interpreted Other Overburden Reflector

BOREHOLE LEGEND

- █ GRAVEL
- █ SAND
- █ SILT
- █ CLAY
- █ TOPSOIL
- █ BEDROCK
- █ PEAT

CLIENT



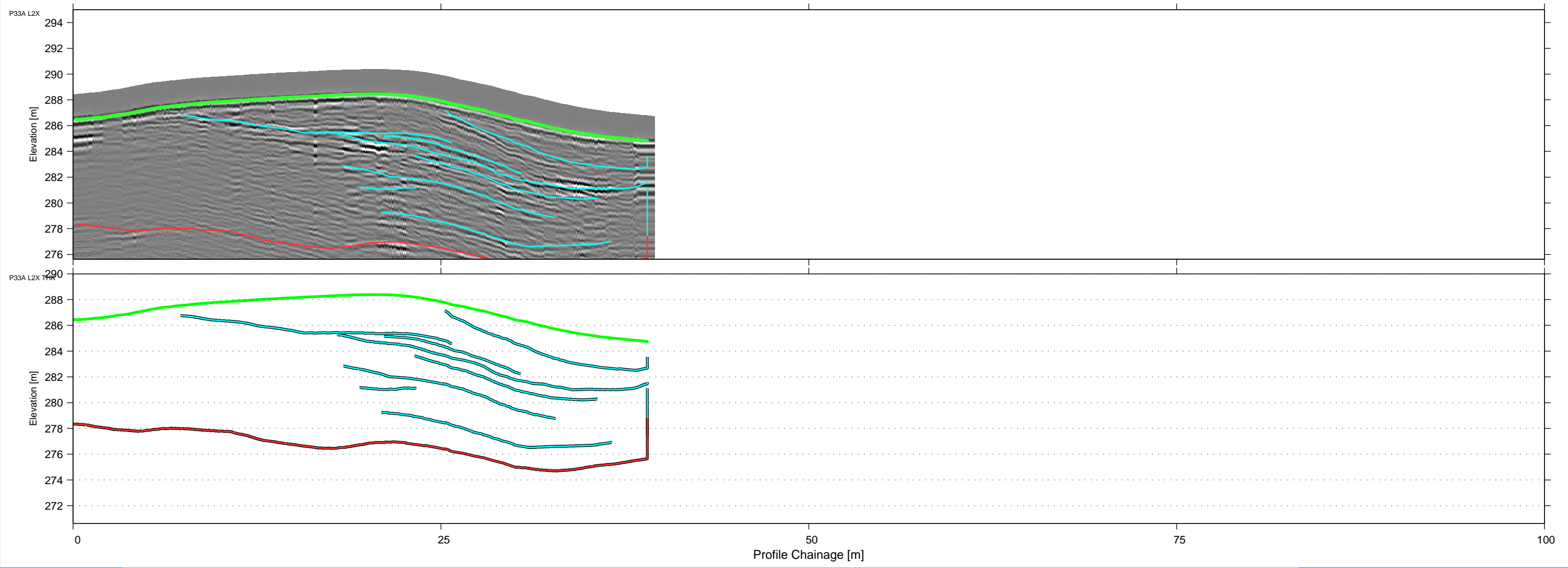
**2017 Geophysical Investigation
TASR Granular**

**P33A
100 MHz GPR Data
Line 2**

| | | | | |
|---------------------------------|-------------------------|-------------|-------------|----------|
| Project No. ENG.YARC03107-01 | DWN JA | CHKD NSP | APVD NSP | REV 0 |
| OFFICE Edmonton | DATE August 30, 2017 | | | |

P33A-L2.5

NAD83
UTMz11
XY: 1:262
Z: 1:300.0
VE: 0.87



LEGEND

- Plotted Data Collection Tracks
- Ground Surface
- Interpreted Bedrock Reflector
- - - Interpreted Other Bedrock Reflector
- Interpreted Other Overburden Reflector

BOREHOLE LEGEND

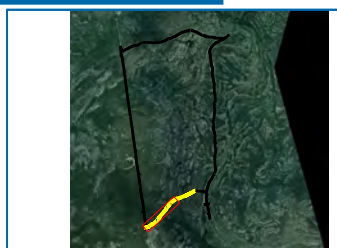
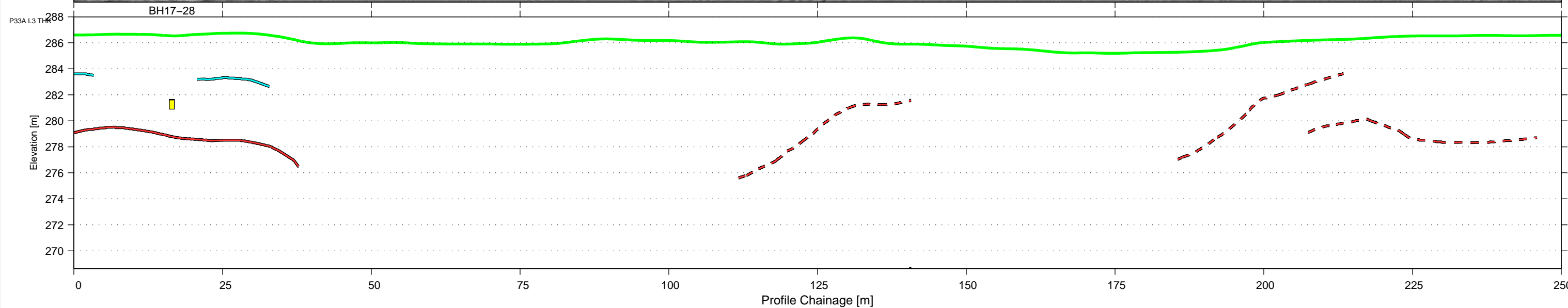
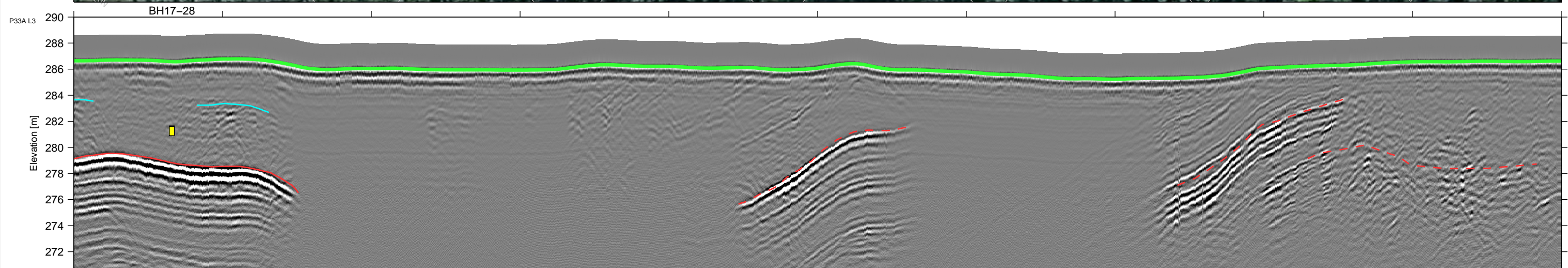
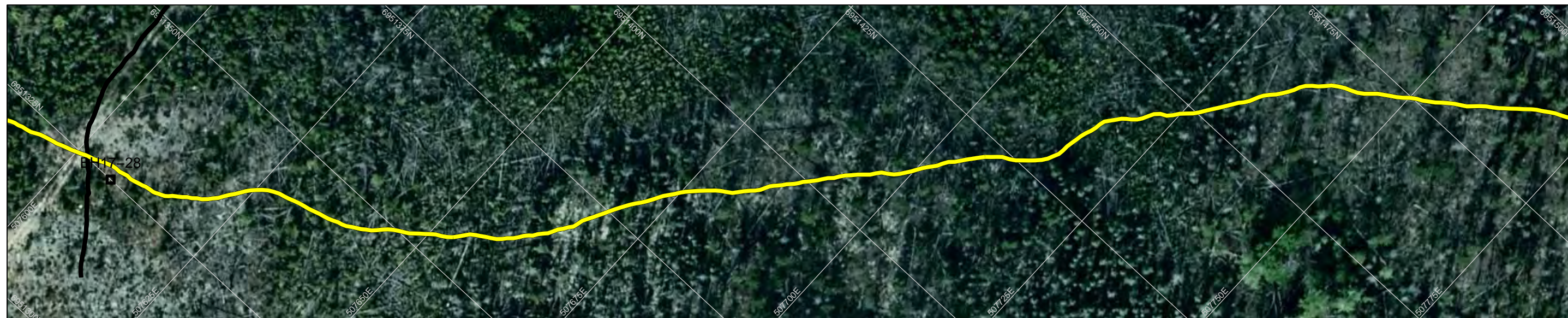
- █ GRAVEL
- █ SAND
- █ SILT
- █ CLAY
- █ TOPSOIL
- █ BEDROCK
- █ PEAT

CLIENT



| 2017 Geophysical Investigation TASR Granular | | | | | |
|---|-------------------------|-------------|-------------|----------|------------|
| P33A 100 MHz GPR Data Line 2X | | | | | |
| Project No. ENG.YARC03107-01 | DWN JA | CHKD NSP | APVD NSP | REV 0 | P33A-L2X.1 |
| OFFICE Edmonton | DATE August 30, 2017 | | | | |

NAD83
UTMz11
XY: 1:656
Z: 1:300.0
VE: 2.19



LEGEND

- Plotted Data Collection Tracks
- Ground Surface
- Interpreted Bedrock Reflector
- - - Interpreted Other Bedrock Reflector
- Interpreted Other Overburden Reflector

BOREHOLE LEGEND

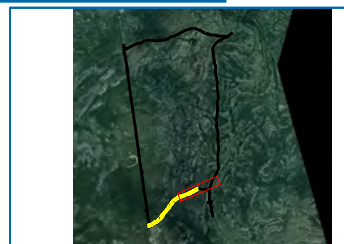
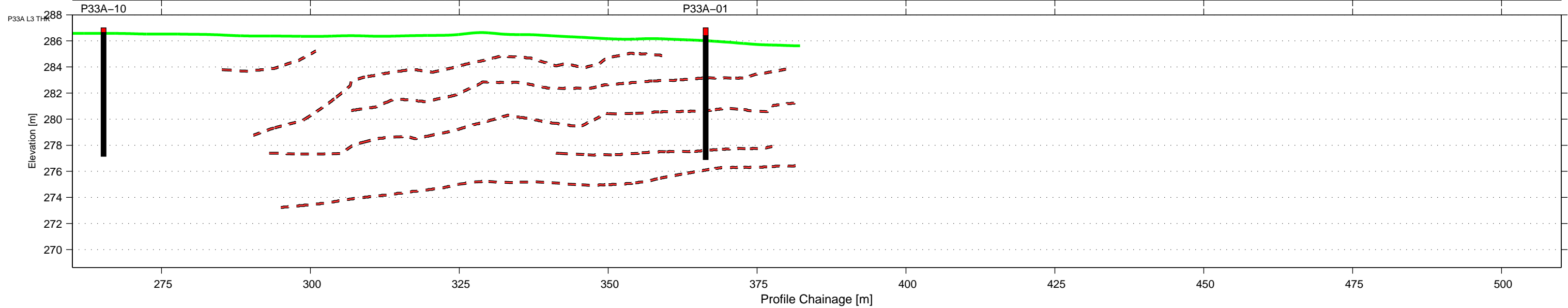
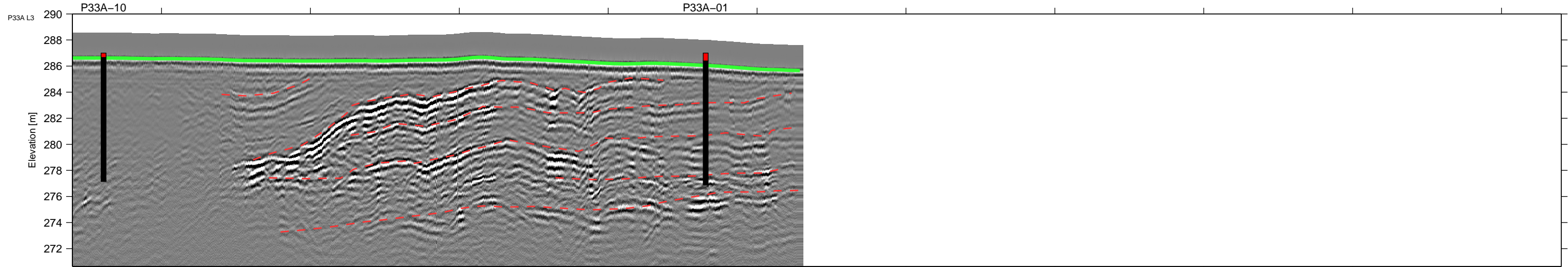
- █ GRAVEL
- █ SAND
- █ SILT
- █ CLAY
- █ TOPSOIL
- █ BEDROCK
- █ PEAT

CLIENT



| 2017 Geophysical Investigation TASR Granular | | | | | |
|---|-------------------------|-------------|-------------|----------|--------------|
| P33A 100 MHz GPR Data Line 3 | | | | | |
| Project No. ENG.YARC03107-01 | DWN JA | CHKD NSP | APVD NSP | REV 0 | P33A-L3-01.1 |
| OFFICE Edmonton | DATE August 30, 2017 | | | | |

NAD83
UTMz11
XY: 1:656
Z: 1:300.0
VE: 2.19



LEGEND

- Plotted Data Collection Tracks
- Ground Surface
- Interpreted Bedrock Reflector
- - - Interpreted Other Bedrock Reflector
- Interpreted Other Overburden Reflector

BOREHOLE LEGEND

- █ GRAVEL
- █ SAND
- █ SILT
- █ CLAY
- █ TOPSOIL
- █ BEDROCK
- █ PEAT

CLIENT

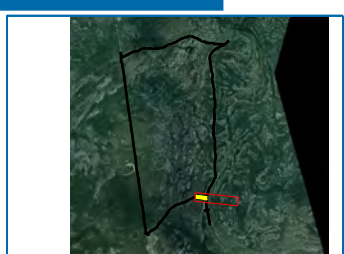
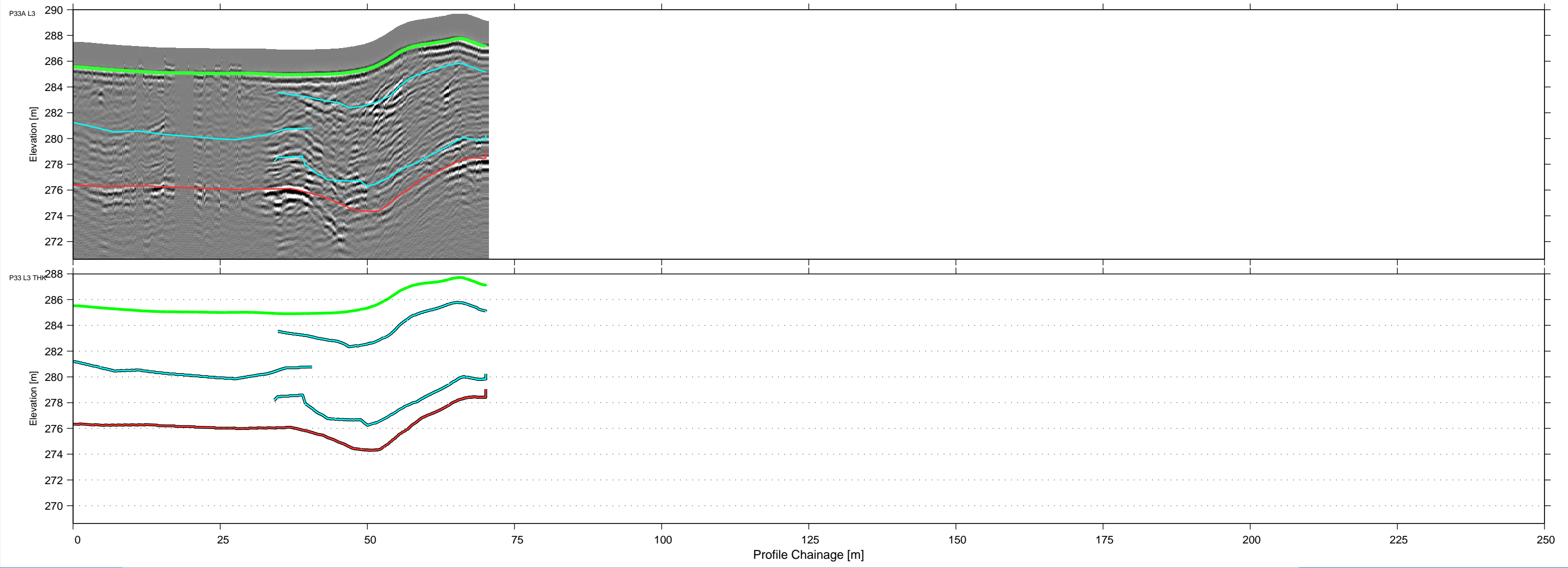
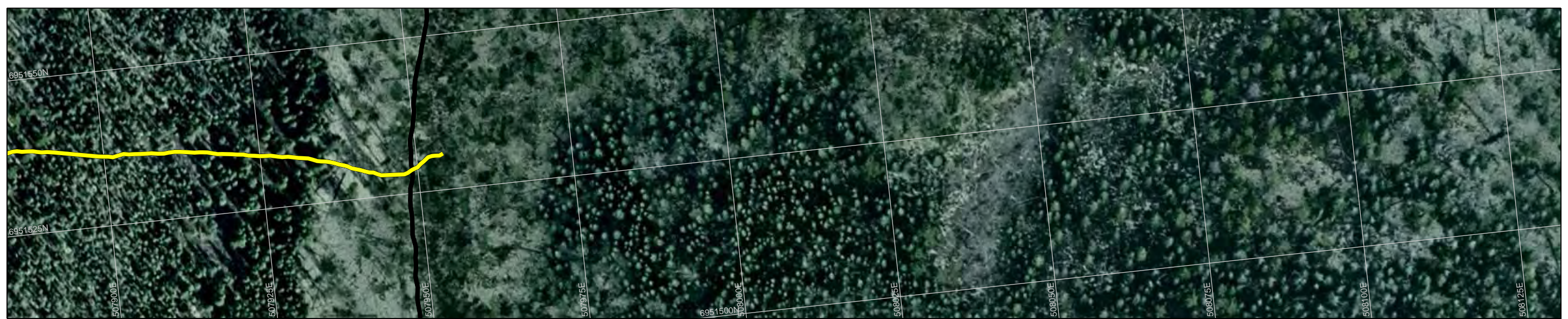


**2017 Geophysical Investigation
TASR Granular**

**P33A
100 MHz GPR Data
Line 3**

| | | | | | |
|---------------------------------|-------------------------|-------------|-------------|----------|--------------|
| Project No. ENG.YARC03107-01 | DWN JA | CHKD NSP | APVD NSP | REV 0 | P33A-L3-01.2 |
| OFFICE Edmonton | DATE August 30, 2017 | | | | |

NAD83
UTMz11
XY: 1:656
Z: 1:300.0
VE: 2.19



LEGEND

- Plotted Data Collection Tracks
- Ground Surface
- Interpreted Bedrock Reflector
- Interpreted Other Bedrock Reflector
- Interpreted Other Overburden Reflector

BOREHOLE LEGEND

- █ GRAVEL
- █ SAND
- █ SILT
- █ CLAY
- █ TOPSOIL
- █ BEDROCK
- █ PEAT

CLIENT

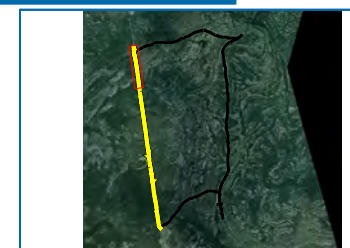
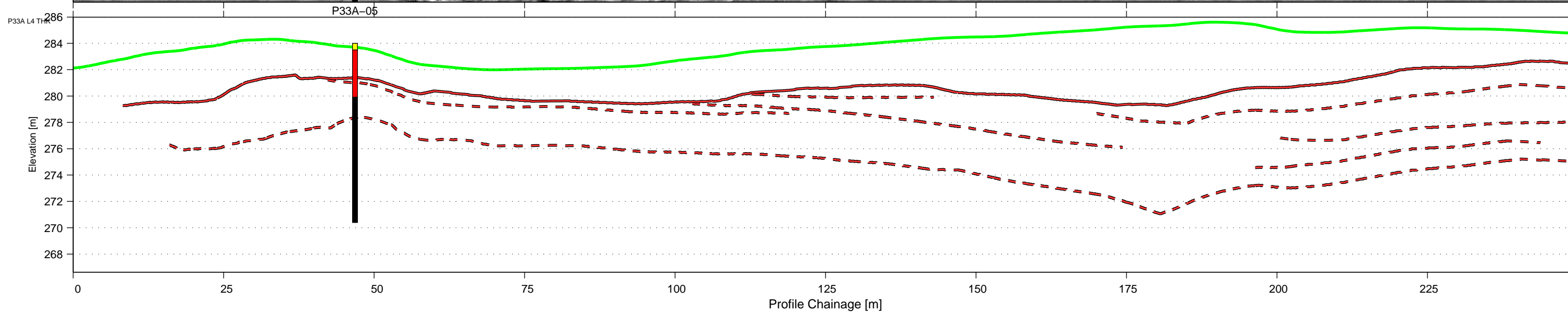
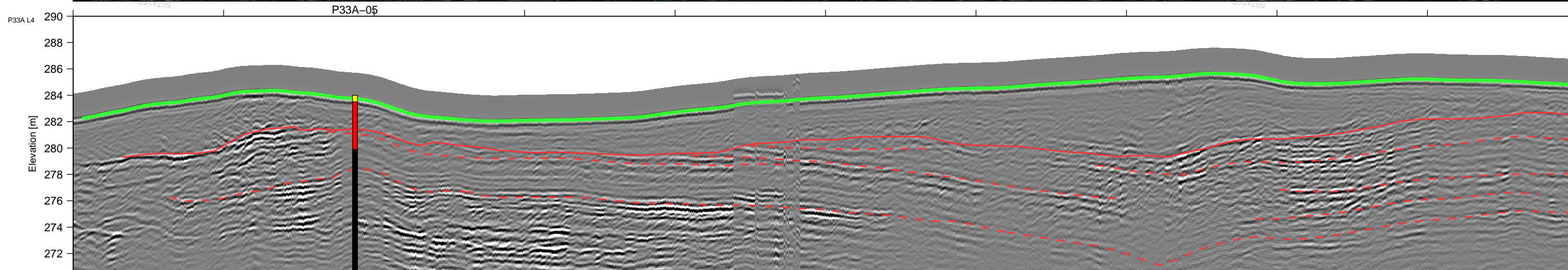


**2017 Geophysical Investigation
TASR Granular**

**P33A
100 MHz GPR Data
Line 3**

| | | | | | |
|---------------------------------|-------------------------|-------------|-------------|----------|--------------|
| Project No. ENG.YARC03107-01 | DWN JA | CHKD NSP | APVD NSP | REV 0 | P33A-L3-02.1 |
| OFFICE Edmonton | DATE August 30, 2017 | | | | |

NAD83
UTMz11
XY: 1:656
Z: 1:300.0
VE: 2.19



LEGEND

- Plotted Data Collection Tracks
- Ground Surface
- Interpreted Bedrock Reflector
- - - Interpreted Other Bedrock Reflector
- Interpreted Other Overburden Reflector

BOREHOLE LEGEND

- █ GRAVEL
- █ SAND
- █ SILT
- █ CLAY
- █ TOPSOIL
- █ BEDROCK
- █ PEAT

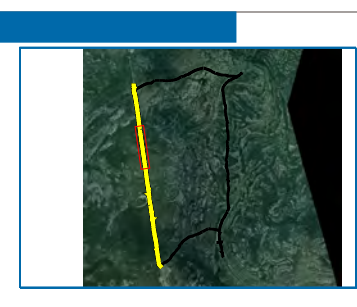
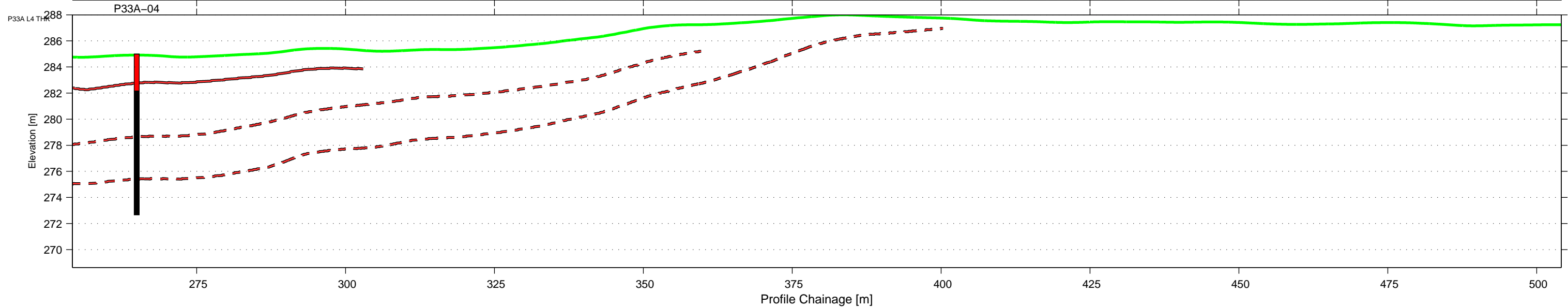
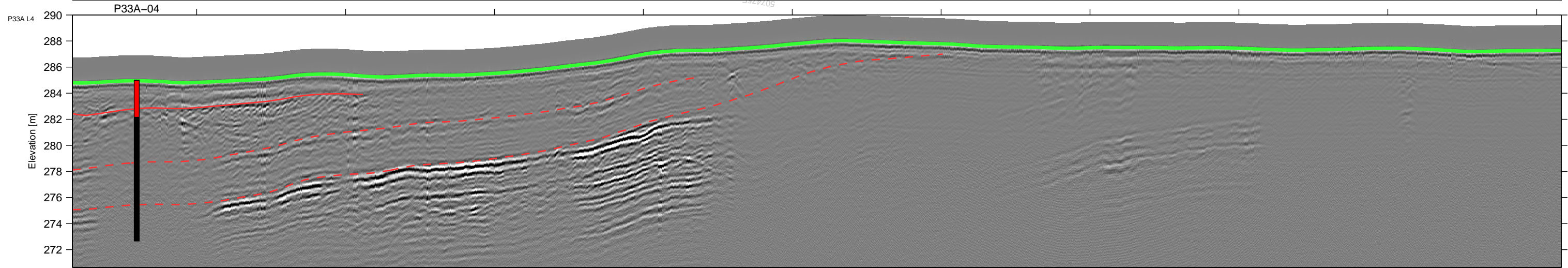
CLIENT



**2017 Geophysical Investigation
TASR Granular**

**P33A
100 MHz GPR Data
Line 4**

| | | | | | |
|---------------------------------|-------------------------|-------------|-------------|----------|-----------|
| Project No. ENG.YARC03107-01 | DWN JA | CHKD NSP | APVD NSP | REV 0 | P33A-L4.1 |
| OFFICE Edmonton | DATE August 30, 2017 | | | | |



LEGEND

- Plotted Data Collection Tracks
- Ground Surface
- Interpreted Bedrock Reflector
- - Interpreted Other Bedrock Reflector
- Interpreted Other Overburden Reflector

BOREHOLE LEGEND

- █ GRAVEL
- █ SAND
- █ SILT
- █ CLAY
- █ TOPSOIL
- █ BEDROCK
- █ PEAT

CLIENT



Northwest Territories

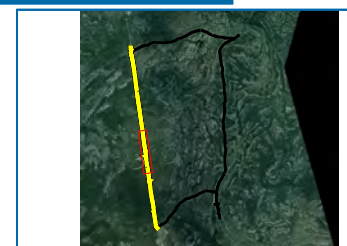
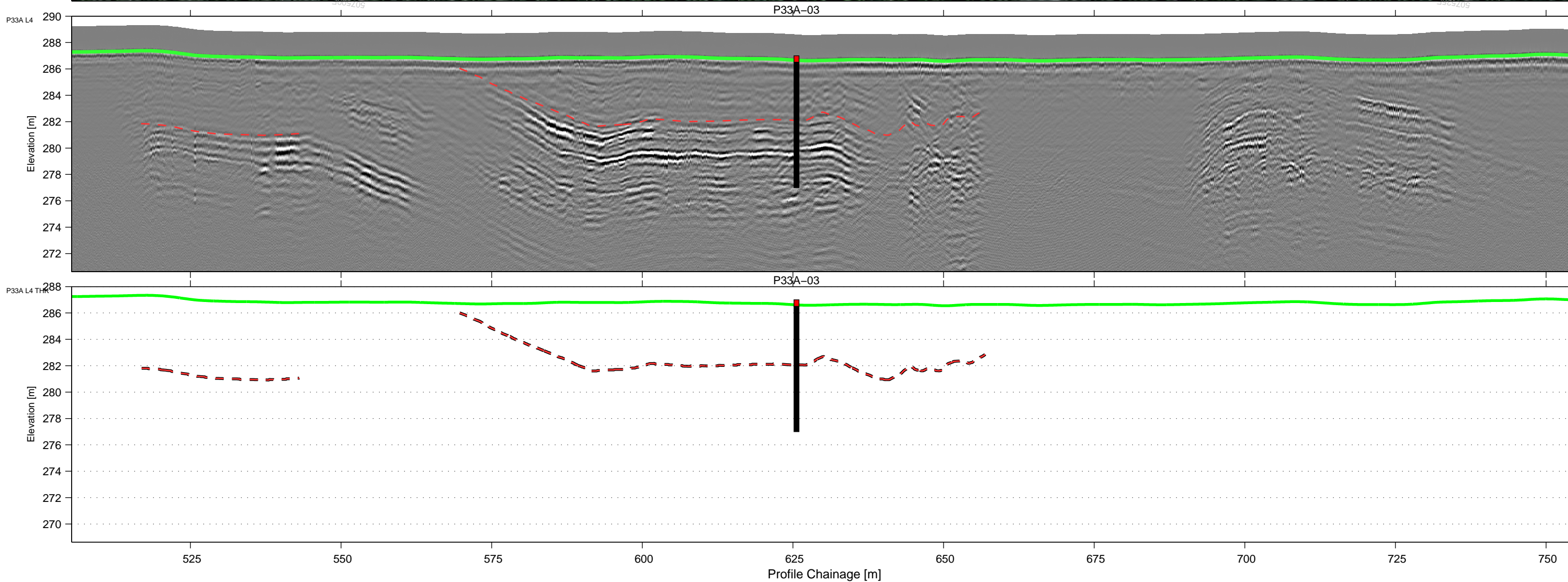
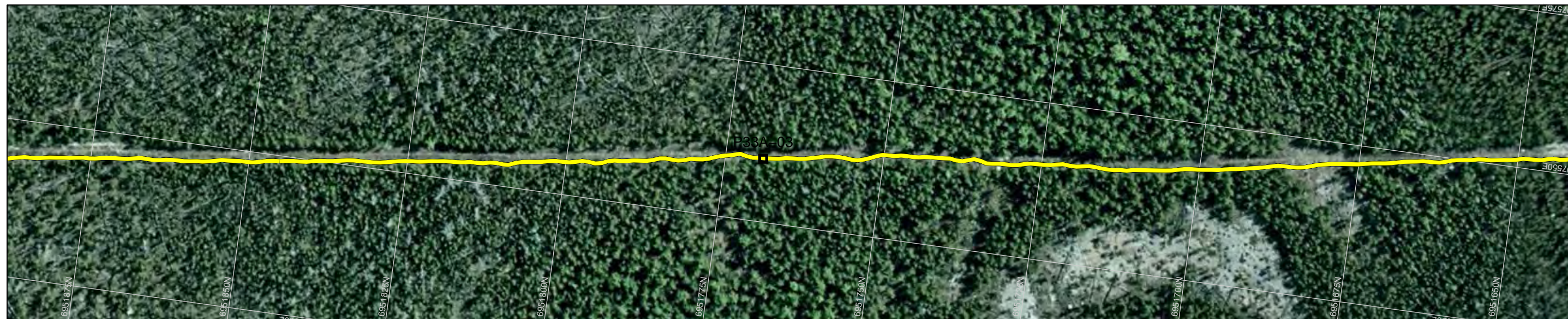


TETRA TECH

| 2017 Geophysical Investigation TASR Granular | | | | | |
|---|-------------------------|-------------|-------------|----------|-----------|
| P33A 100 MHz GPR Data Line 4 | | | | | |
| Project No. ENG.YARC03107-01 | DWN JA | CHKD NSP | APVD NSP | REV 0 | P33A-L4.2 |
| OFFICE Edmonton | DATE August 30, 2017 | | | | |



NAD83
UTMz11
XY: 1:656
Z: 1:300.0
VE: 2.19



LEGEND

- Plotted Data Collection Tracks
- Ground Surface
- - - Interpreted Bedrock Reflector
- - - Interpreted Other Bedrock Reflector
- Interpreted Other Overburden Reflector

BOREHOLE LEGEND

- █ GRAVEL
- █ SAND
- █ SILT
- █ CLAY
- █ TOPSOIL
- █ BEDROCK
- █ PEAT

CLIENT



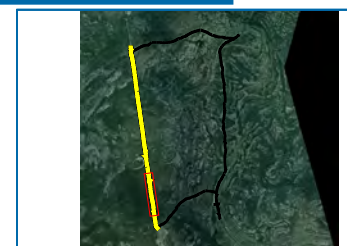
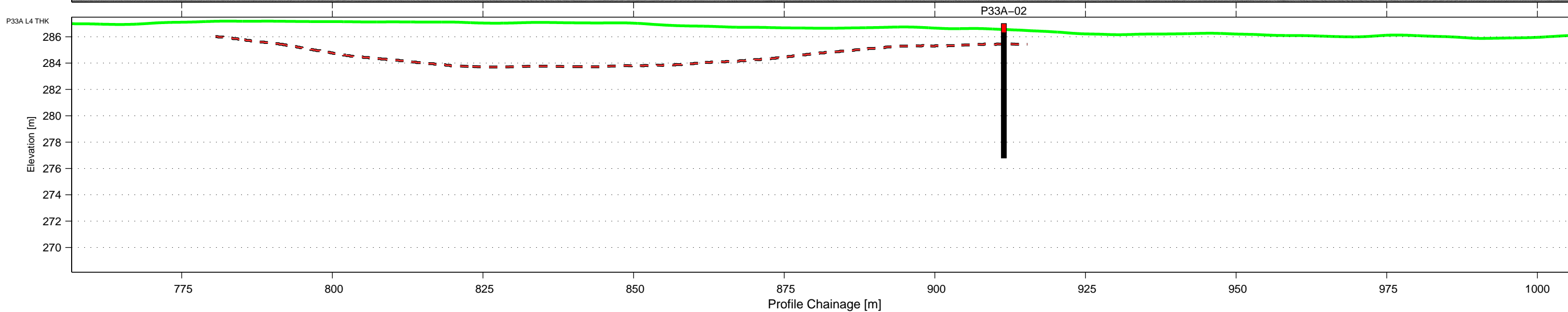
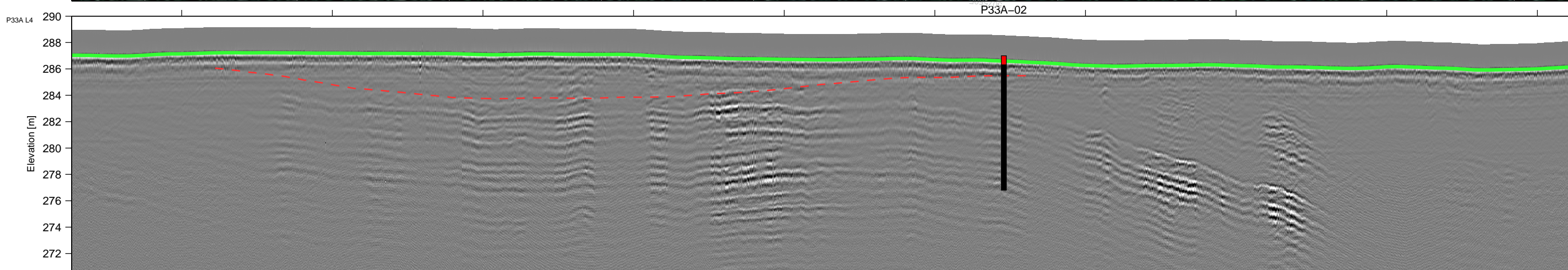
**2017 Geophysical Investigation
TASR Granular**

**P33A
100 MHz GPR Data
Line 4**

| | | | | | |
|---------------------------------|-------------------------|-------------|-------------|----------|-----------|
| Project No. ENG.YARC03107-01 | DWN JA | CHKD NSP | APVD NSP | REV 0 | P33A-L4.3 |
| OFFICE Edmonton | DATE August 30, 2017 | | | | |



NAD83
UTMz11
XY: 1:656
Z: 1:300.0
VE: 2.19



LEGEND

- Plotted Data Collection Tracks
- Ground Surface
- Interpreted Bedrock Reflector
- - Interpreted Other Bedrock Reflector
- Interpreted Other Overburden Reflector

BOREHOLE LEGEND

- █ GRAVEL
- █ SAND
- █ SILT
- █ CLAY
- █ TOPSOIL
- █ BEDROCK
- █ PEAT

CLIENT



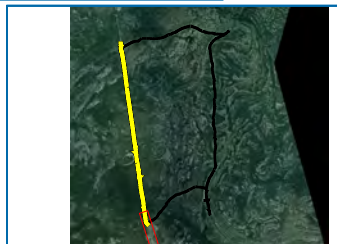
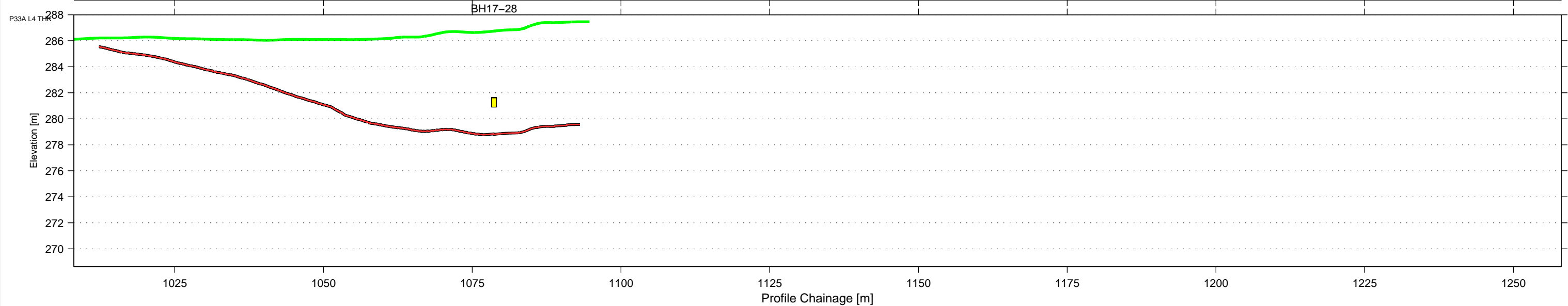
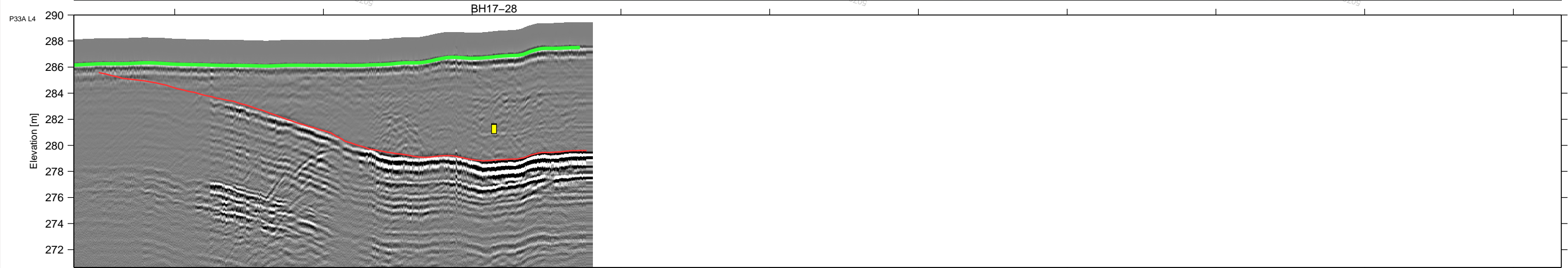
**2017 Geophysical Investigation
TASR Granular**

**P33A
100 MHz GPR Data
Line 4**

| | | | | | |
|---------------------------------|-------------------------|-------------|-------------|----------|-----------|
| Project No. ENG.YARC03107-01 | DWN JA | CHKD NSP | APVD NSP | REV 0 | P33A-L4.4 |
| OFFICE Edmonton | DATE August 30, 2017 | | | | |



NAD83
UTMz11
XY: 1:656
Z: 1:300.0
VE: 2.19



LEGEND

- Plotted Data Collection Tracks
- Ground Surface
- Interpreted Bedrock Reflector
- - Interpreted Other Bedrock Reflector
- Interpreted Other Overburden Reflector

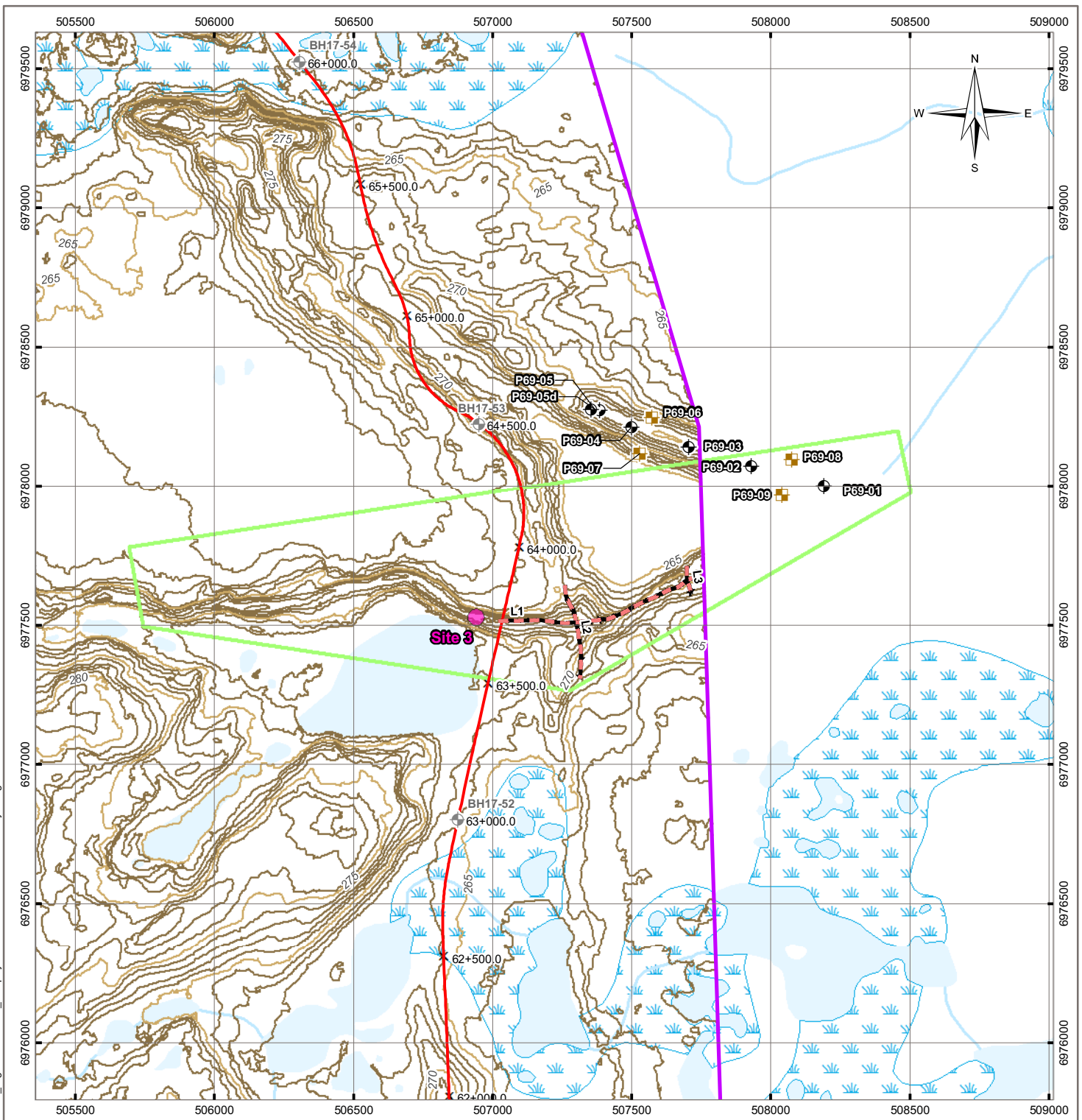
BOREHOLE LEGEND

- █ GRAVEL
- █ SAND
- █ SILT
- █ CLAY
- █ TOPSOIL
- █ BEDROCK
- █ PEAT

CLIENT



| 2017 Geophysical Investigation TASR Granular | | | | | |
|---|-------------------------|-------------|-------------|----------|-----------|
| P33A 100 MHz GPR Data Line 4 | | | | | |
| Project No. ENG.YARC03107-01 | DWN JA | CHKD NSP | APVD NSP | REV 0 | P33A-L4.5 |
| OFFICE Edmonton | DATE August 30, 2017 | | | | |



Q:\Vancouver\GIS\ENGINEERING\YARC\YARC03107-01\FigureP68A-001_Geophysics.mxd modified 9/27/2017 by morgun.zondervan

LEGEND

- Borehole
- Hand Dug Testpit
- Drill Hole is by Others*
- Proposed TASR Alignment
- Ground Penetrating Radar Line
- 2 km Swath
- Archaeological Site Buffer
- Granular Prospect
- Index Contour (5 m)
- Intermediate Contour (1 m)
- Watercourse
- Wetland

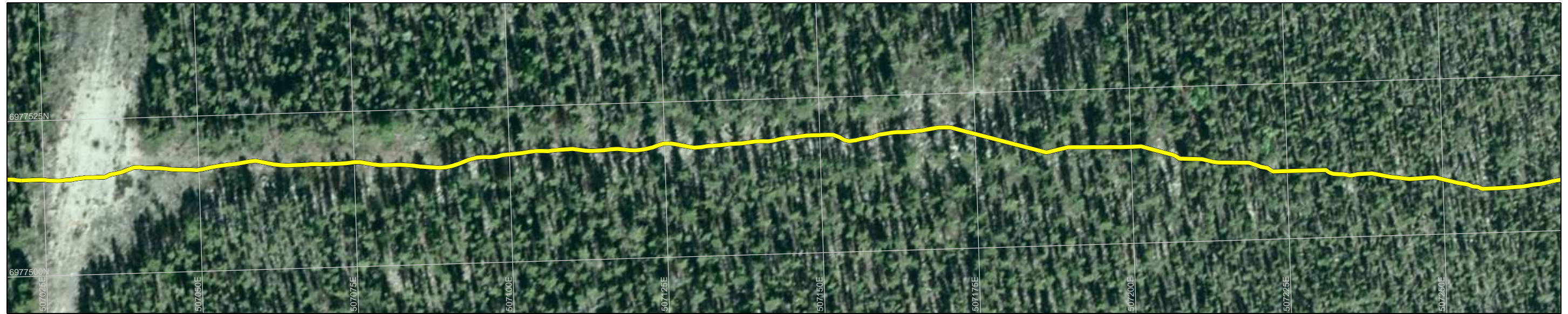
NOTES
 Base data source:
 CanVec Topo Data
 *Boreholes locations provided by
 GNWT, source Stantec 2017
 winter drilling program
STATUS
 ISSUED FOR REVIEW

2017 GEOTECHNICAL INVESTIGATION TASR PROSPECTS

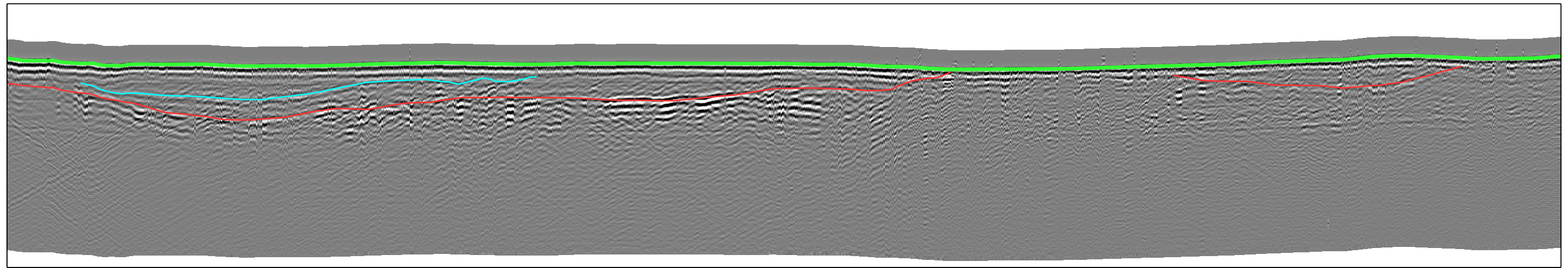
Prospect 68A Geophysical Site Plan

| | | |
|---|-----------------------|------------------------|
| PROJECTION UTM Zone 11 | DATUM NAD83 | CLIENT |
| Scale: 1:20,000 | | |
| | | |
| FILE NO. YARC03107-01_FigureP68A-001_Geophysics.mxd | | |
| OFFICE Ti-VANC | DWN MEZ | CKD SL |
| DATE September 15, 2017 | APVD NP | REV 0 |
| PROJECT NO. ENG.YARC03107-01 | | Figure P68A-001 |

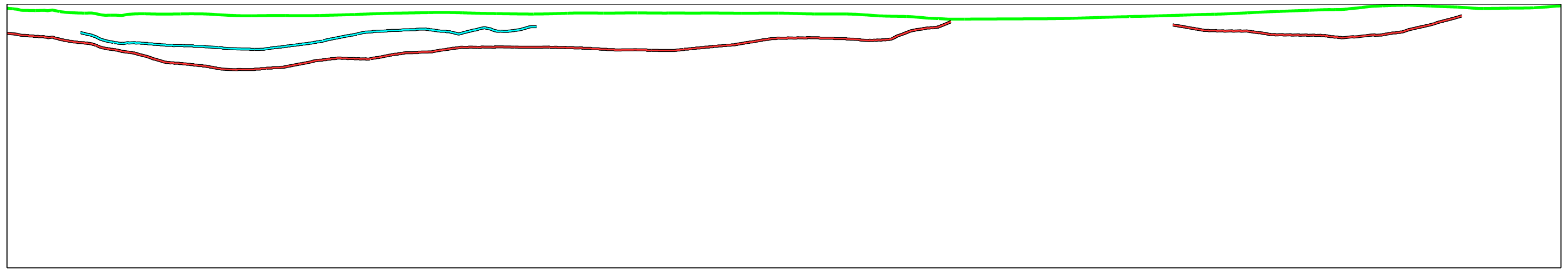
N
 NAD83
 UTMz11
 XY: 1:656
 Z: 1:400.0
 VE: 1.64



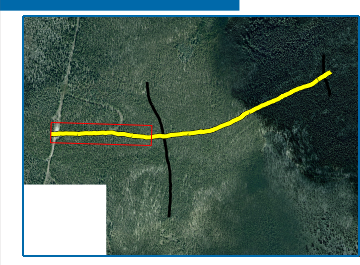
P68A L1



P68A L1 THK



Profile Chainage [m]



LEGEND

- Plotted Data Collection Tracks
- Ground Surface
- Interpreted Bedrock Reflector
- - - Interpreted Other Bedrock Reflector
- Interpreted Other Overburden Reflector

CLIENT



**2017 Geophysical Investigation
 TASR Granular**

**P68A
 100 MHz GPR Data
 Line 1**

| | | | | | |
|---------------------------------|-------------------------|-------------|-------------|----------|-----------|
| Project No. ENG.YARC03107-01 | DWN JA | CHKD NSP | APVD NSP | REV 0 | P68A-L1.1 |
| OFFICE Edmonton | DATE August 30, 2017 | | | | |