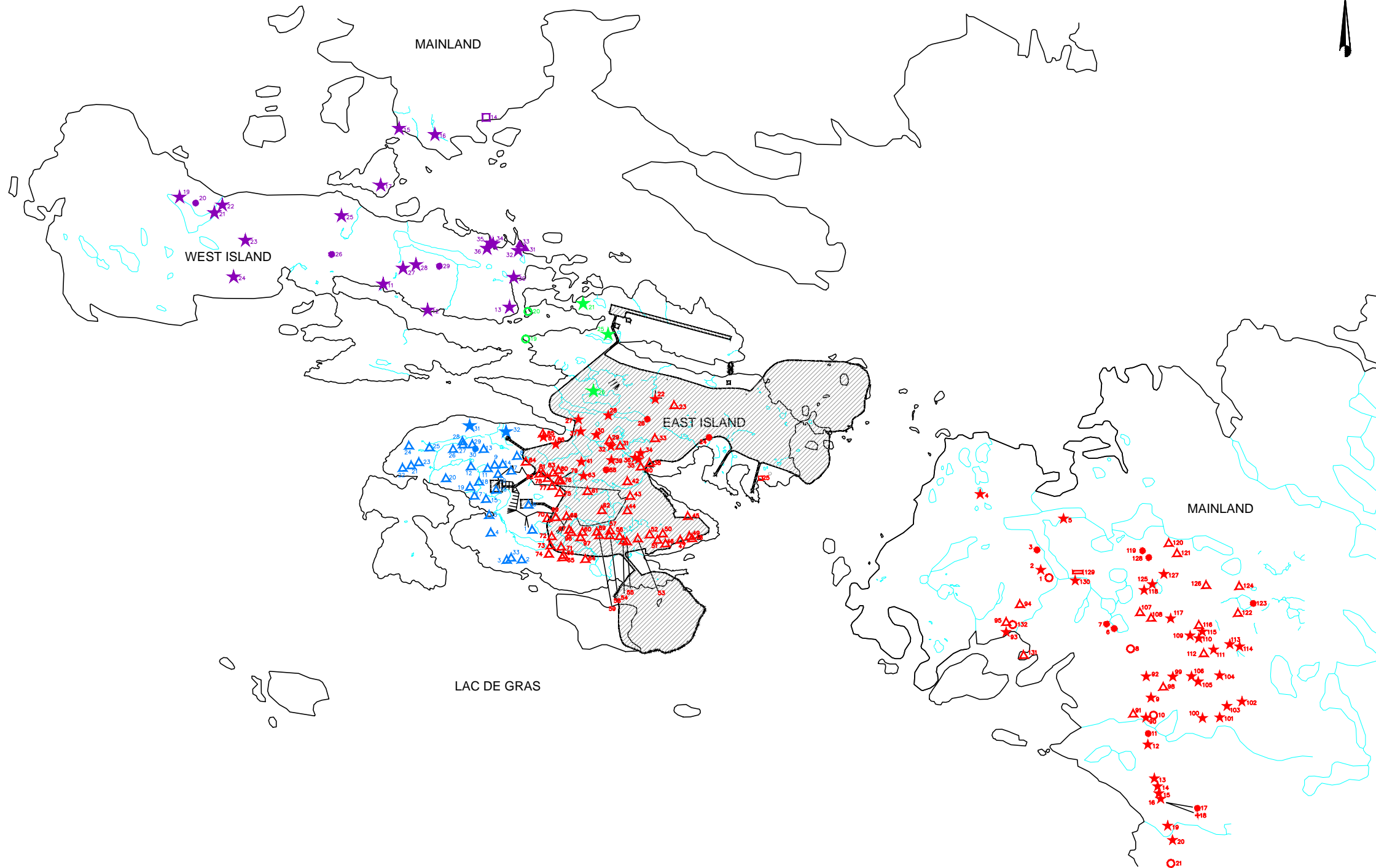


L:\2009\1328 Yknife\09-1328-0021\11000\Report C 11100\Fig 3-26 0913280021C017 Archaeological Sites and Mine Footprint.dwg Dec 15, 2010 - 9:36am



**LEGEND**

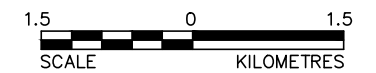
- ★ ARTIFACT SCATTER
- ▲ QUARRY SITE
- ISOLATED FIND
- STONE FEATURE/BURIAL
- CAMP SITE
- ▲ CAMP SITE (HEARTH)
- ▭ WOODEN POLES
- ✚ BURIAL SITE
- ▨ PROJECT FOOTPRINT
- LcNs
- LcNt
- LdNs
- LdNt

**NOTE**

MAP IN NAD27 COORDINATE SYSTEM.

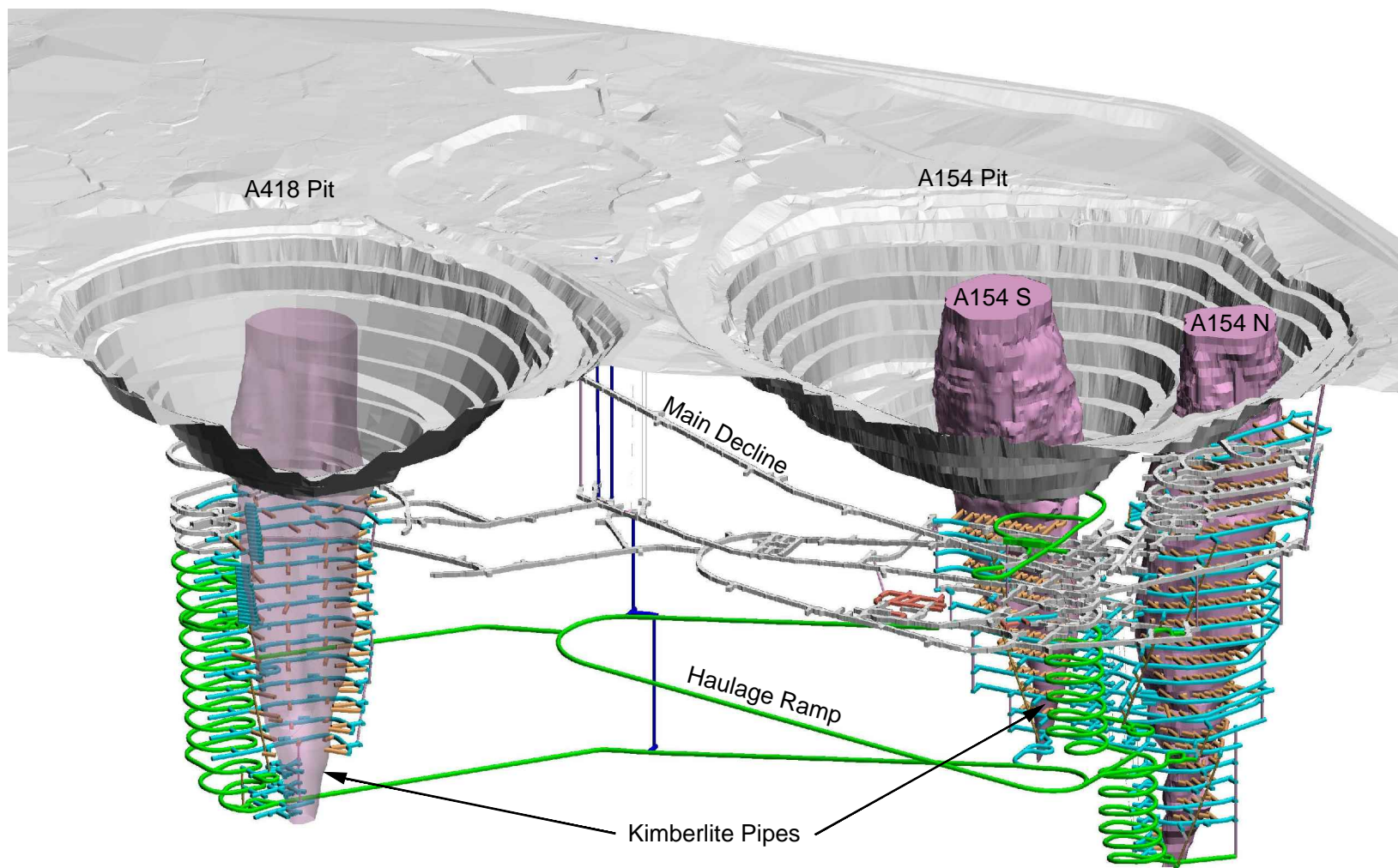
**REFERENCE**

BORDEN LOCATIONS SUPPLIED BY FEDIRCHUK McCULLOUGH & ASSOCIATES LTD.



PROJECT		<b>DIAVIK DIAMOND MINES NORTHWEST TERRITORIES</b>			
TITLE		<b>ARCHAEOLOGICAL SITES AND MINE FOOTPRINTS</b>			
PROJECT		09.1328.0021	FILE No.		0913280021C017
DESIGN	TD	04/11/09	SCALE	AS SHOWN	REV. 0
CADD	RML	12/11/09	<b>FIGURE: 3-26</b>		
CHECK	TD	13/12/10			
REVIEW	GM	13/12/10			



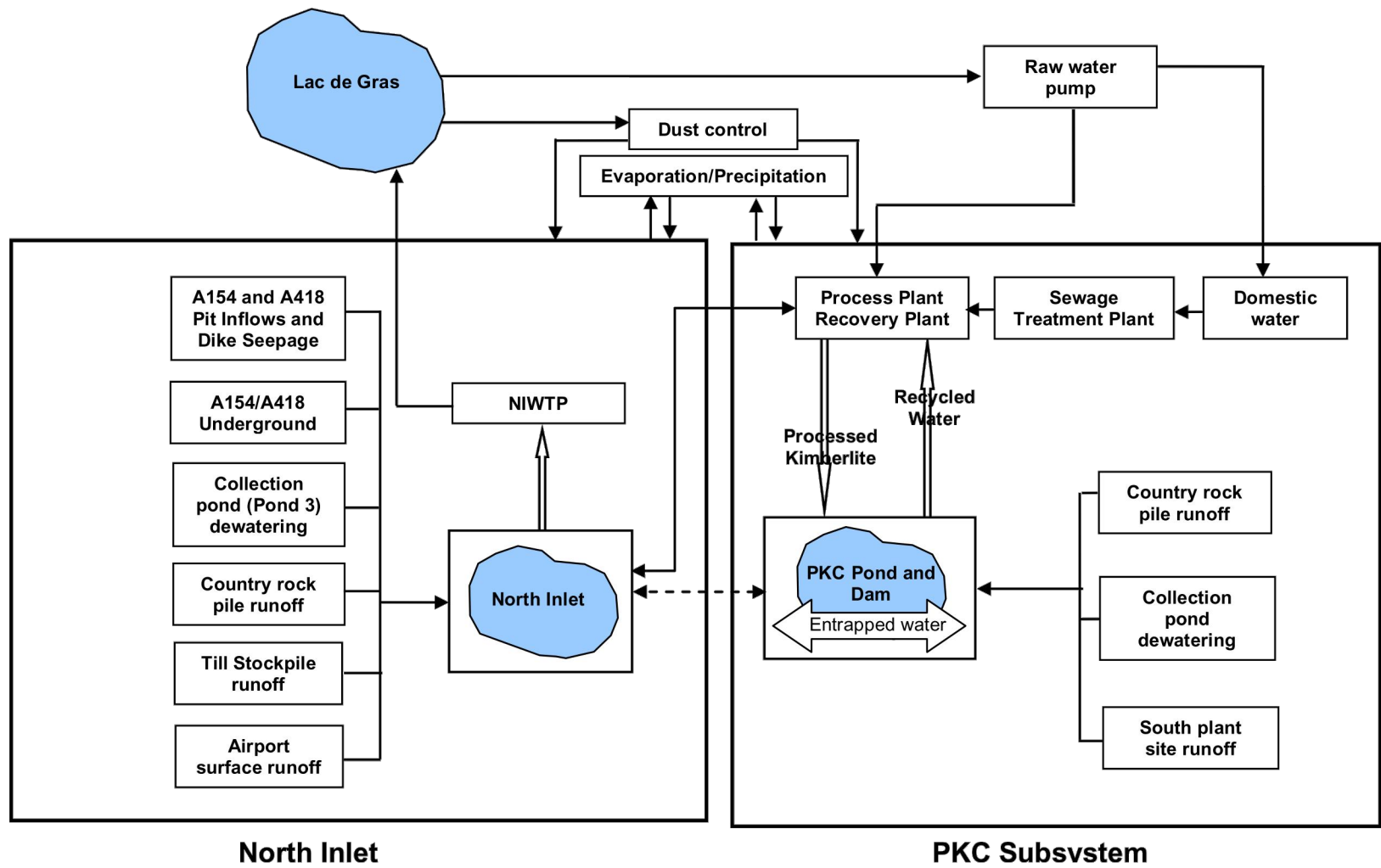


SCHEMATIC ONLY, NOT TO SCALE

PROJECT		DIAVIK DIAMOND MINES NORTHWEST TERRITORIES			
TITLE		<b>OPEN-PIT AND UNDERGROUND MINE DESIGN</b>			
PROJECT		06-1328-001	FILE No.	0913280021C018	
DESIGN	TD	30/10/09	SCALE	N.T.S.	REV. 0
CADD	JEF	18/11/09	<b>FIGURE 4-1</b>		
CHECK	TD	13/12/10			
REVIEW	GM	13/12/10			

**SOURCE**  
IMAGE PROVIDED BY DDMI.





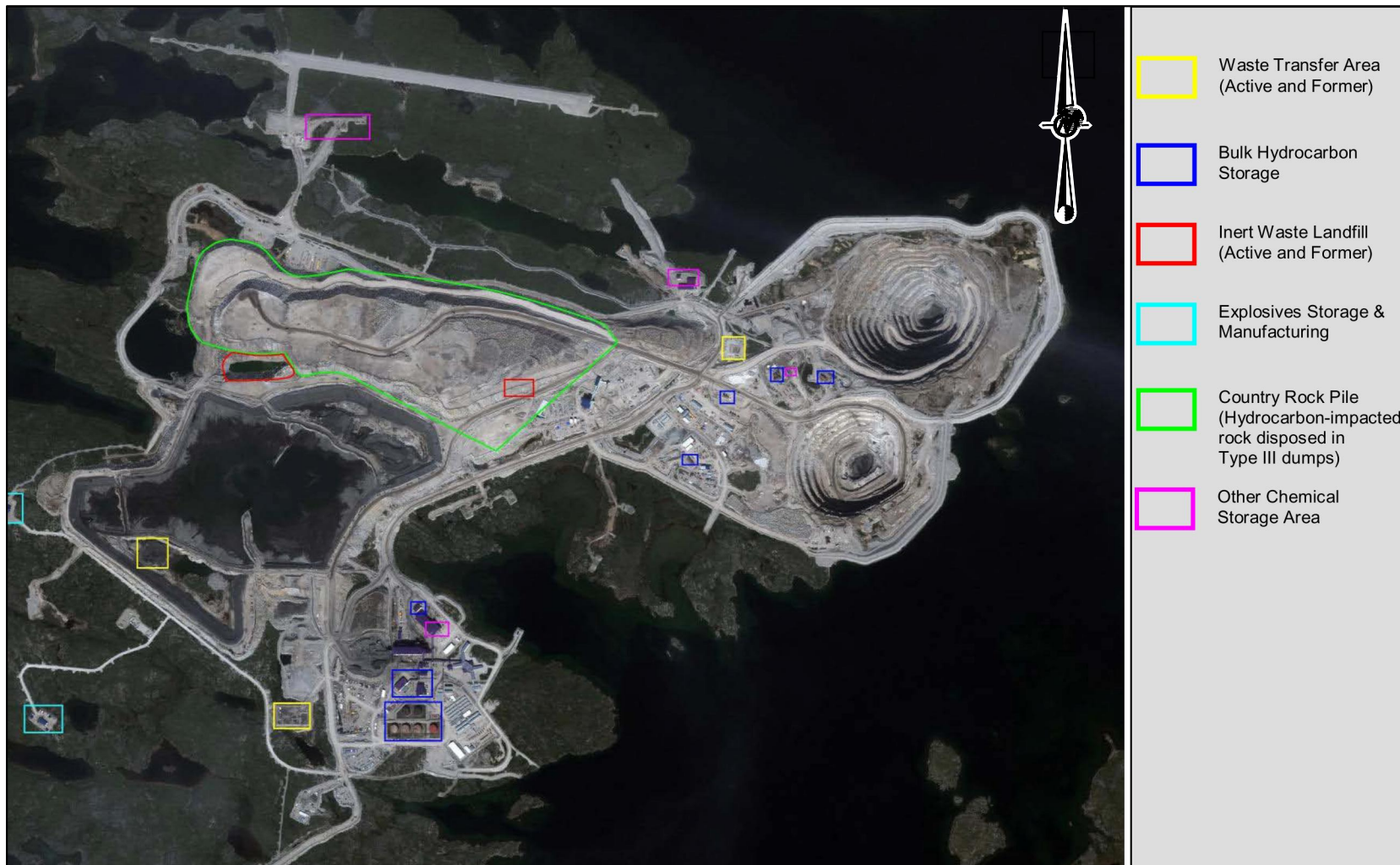
SCHMATIC ONLY, NOT TO SCALE

PROJECT		DIAVIK DIAMOND MINES NORTHWEST TERRITORIES			
TITLE		CONCEPTUAL WATER MANAGEMENT SYSTEM			
PROJECT No.		06-1328-0021		FILE No. 0913280021C019	
DESIGN	TD	30/10/09		SCALE	N.T.S. REV. 0
CADD	TRE	26/11/09		<b>FIGURE 4-2</b>	
CHECK	TD	13/12/10			
REVIEW	GM	13/12/10			

**NOTES**

SOUTH COUNTRY ROCK PILE PONDS NOT INCLUDED.





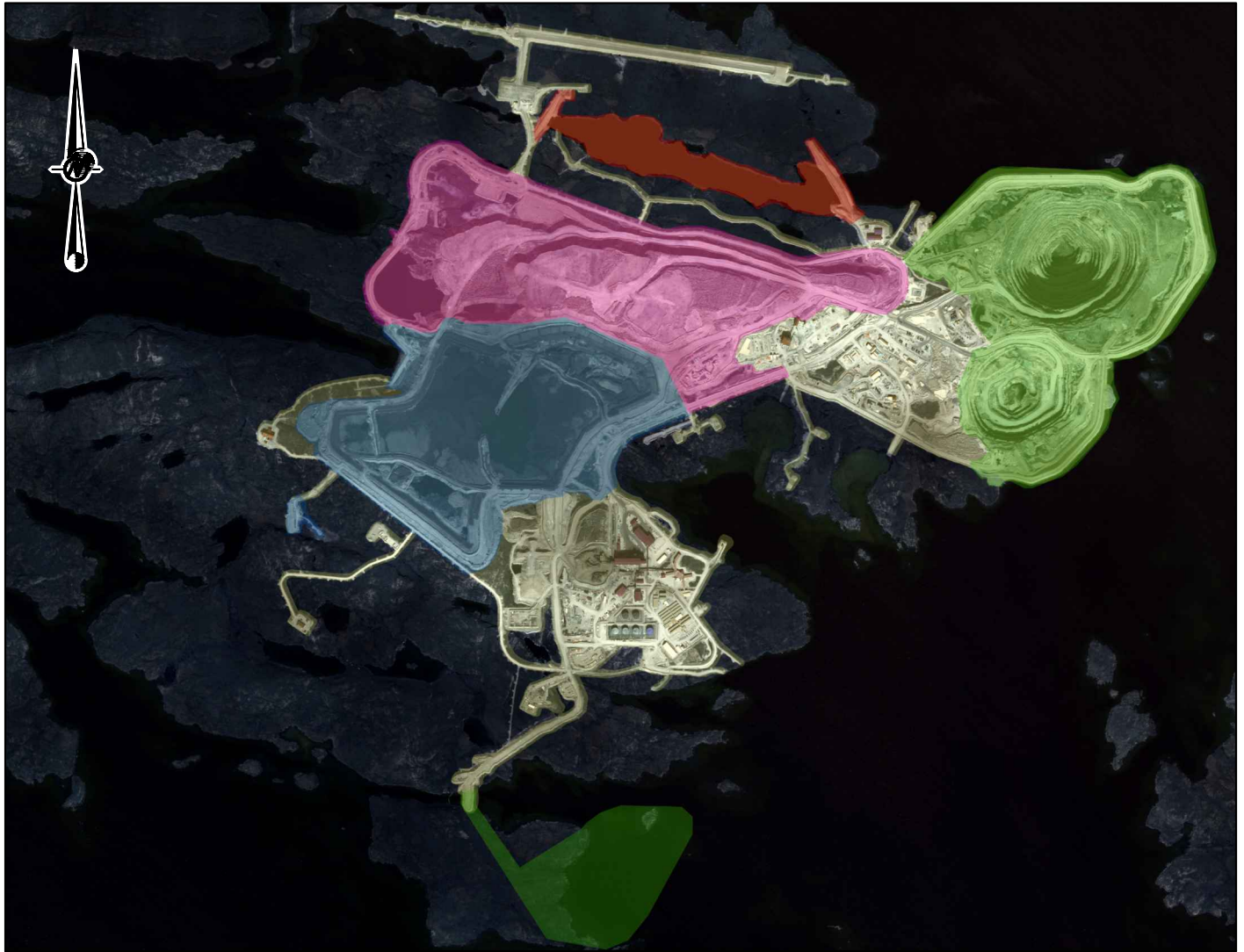
SCHEMATIC ONLY, NOT TO SCALE

PROJECT					DIAVIK DIAMOND MINES NORTHWEST TERRITORIES				
TITLE									
<b>AREAS WITH POTENTIAL FOR CONTAMINATED MATERIALS AT CLOSURE</b>									
PROJECT No. 06-1328-0021					FILE No. 0913280021C046				
DESIGN	TD	03/12/10	SCALE		N.T.S.	REV.	0		
CADD	JEF	06/12/10	<b>FIGURE 4-3</b>						
CHECK	TD	13/12/10							
REVIEW	GM	13/12/10							






REFERENCE

ORIGINAL DRAWING PROVIDED BY DDMI.



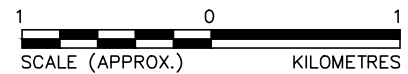



**LEGEND**

-  MINE INFRASTRUCTURE AREAS
-  NORTH INLET AREA
-  OPEN PIT, UNDERGROUND AND DIKE AREAS
-  PKC AREA
-  WASTEROCK AND TILL AREA

**SOURCE**

IMAGE PROVIDED BY DDMI



<b>PROJECT</b>	<b>DIAMANT DIAMANT MINES NORTHWEST TERRITORIES</b>				
<b>TITLE</b>	<b>AREA DESIGNATIONS FOR CLOSURE PLANNING</b>				
	PROJECT	09.1321.0028	FILE No.	0913280021C020	
	DESIGN	TD	28/10/09	SCALE	AS SHOWN
	CADD	JEF	13/11/09	REV.	0
	CHECK	TD	13/12/10	<b>FIGURE: 5-1</b>	
REVIEW	GM	13/12/10			

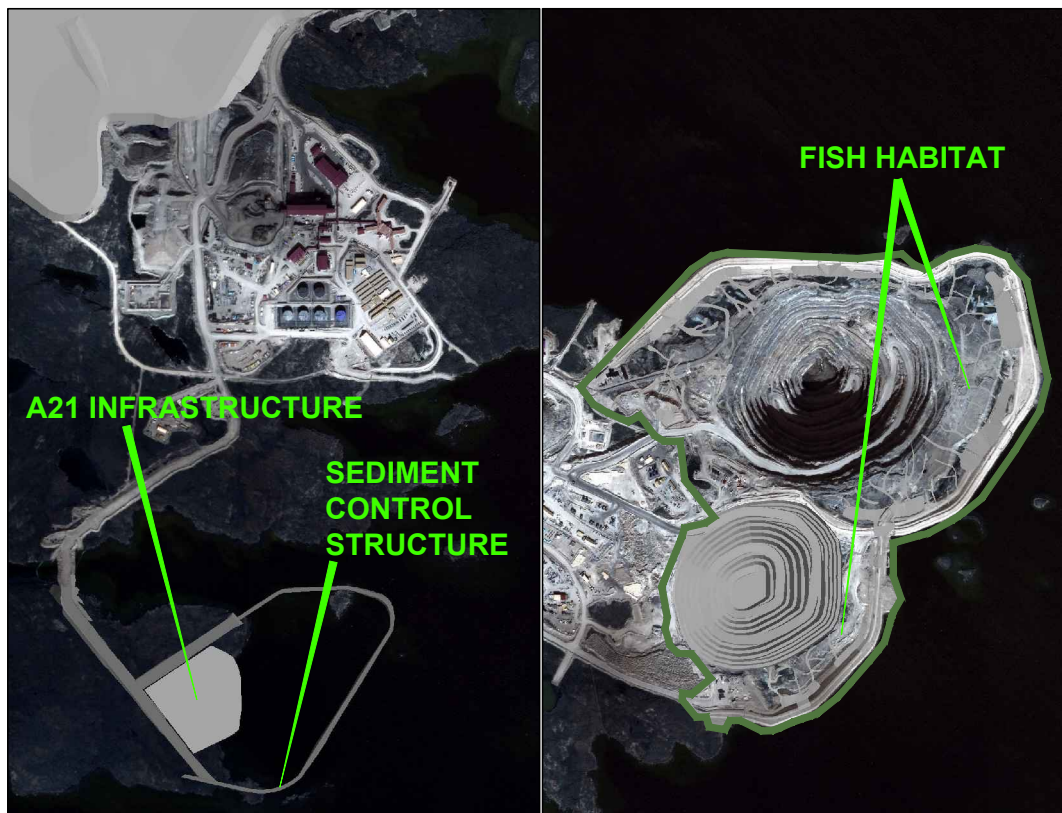
**FIGURE 5-2a  
PRE-DEVELOPMENT  
(2000)**



**FIGURE 5-2b  
EXISTING DEVELOPMENT  
(2009)**



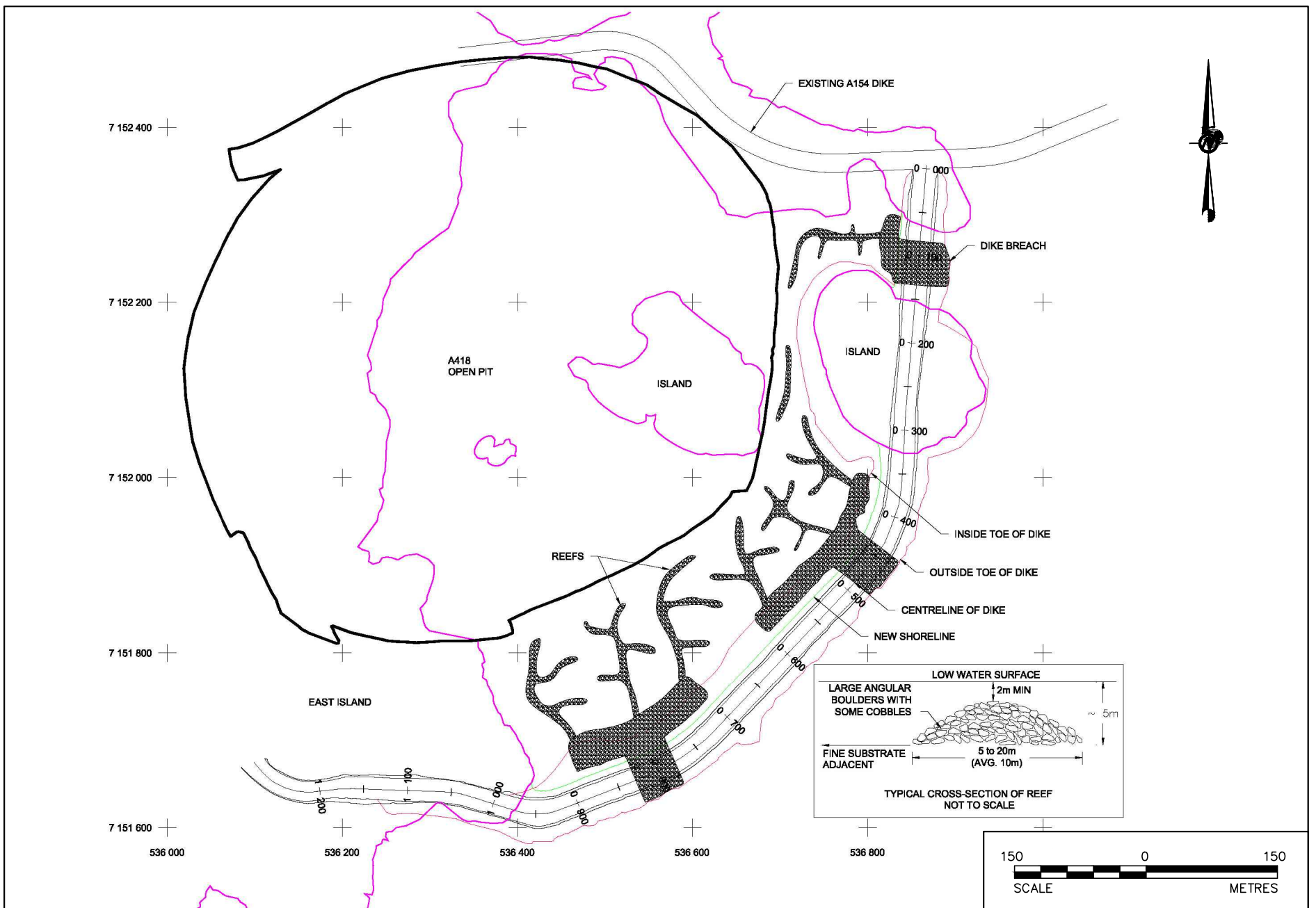
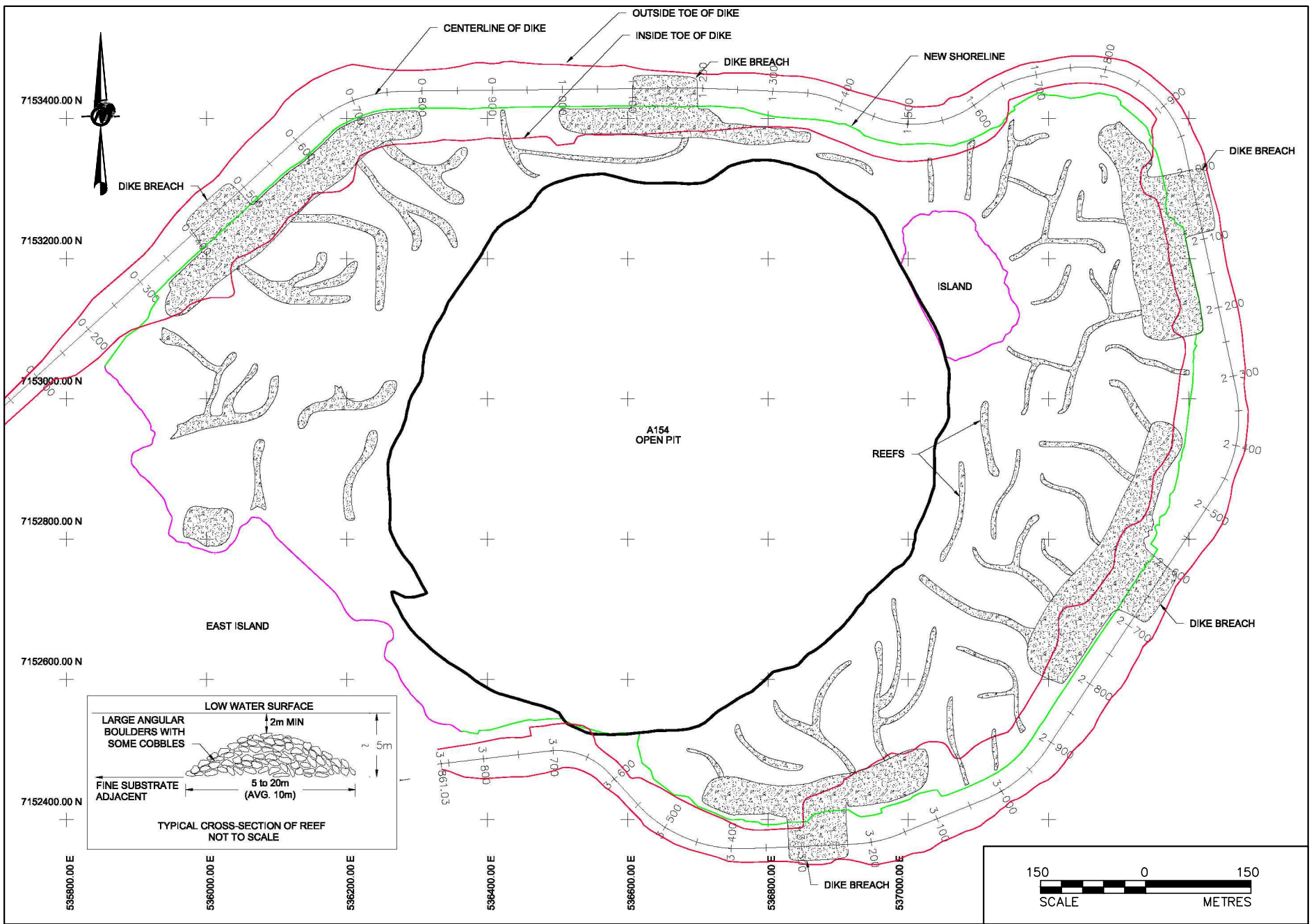
**FIGURE 5-2c  
FINAL DEVELOPMENT  
(2022)**



**SOURCE**  
IMAGES PROVIDED BY DDMI

PROJECT		DIAVIK DIAMOND MINES NORTHWEST TERRITORIES	
TITLE		OPEN PIT, UNDERGROUND AND DIKE AREAS - SITE DEVELOPMENT	
PROJECT	09.1328.0021	FILE No.	0913280021C021
DESIGN	TD	11/11/09	SCALE AS SHOWN REV. 0
CADD	TRE	25/11/09	
CHECK	TD	13/12/10	
REVIEW	GM	13/12/10	

**FIGURE: 5-2**




**SOURCE**  
PLAN DEVELOPED FROM INFORMATION PROVIDED BY DDMI.

PROJECT		DIAVIK DIAMOND MINES NORTHWEST TERRITORIES	
TITLE		FISH HABITAT DESIGN - A154/A418 DIKE AREAS	
PROJECT	09.1328.0021	FILE No.	0913280021C022
DESIGN	TD 04/11/09	SCALE	AS SHOWN REV. 0
CADD	JEF 23/11/09		
CHECK	TD 13/12/10		
REVIEW	GM 13/12/10		

**FIGURE: 5-3**




PROJECT		DIAVIK DIAMOND MINES NORTHWEST TERRITORIES			
TITLE		PREFERRED FINAL OPEN-PIT, UNDERGROUND AND DIKE AREA LANDSCAPE			
	PROJECT	09.1328.0021	FILE No.	0913280021C023	
	DESIGN	TD	20/11/09	SCALE	AS SHOWN
	CADD	JEF	06/12/10	REV.	0
	CHECK	TD	13/12/10	<b>FIGURE: 5-4</b>	
	REVIEW	GM	13/12/10		

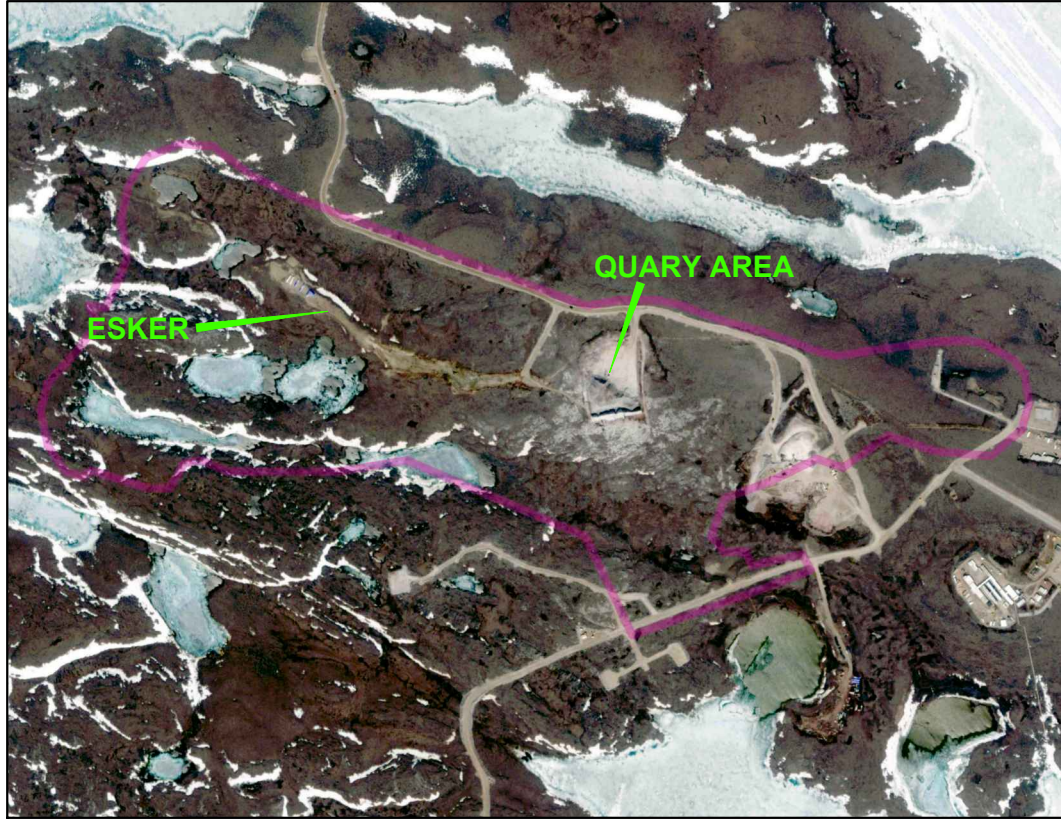
**SOURCE**  
IMAGE PROVIDED BY DDMI



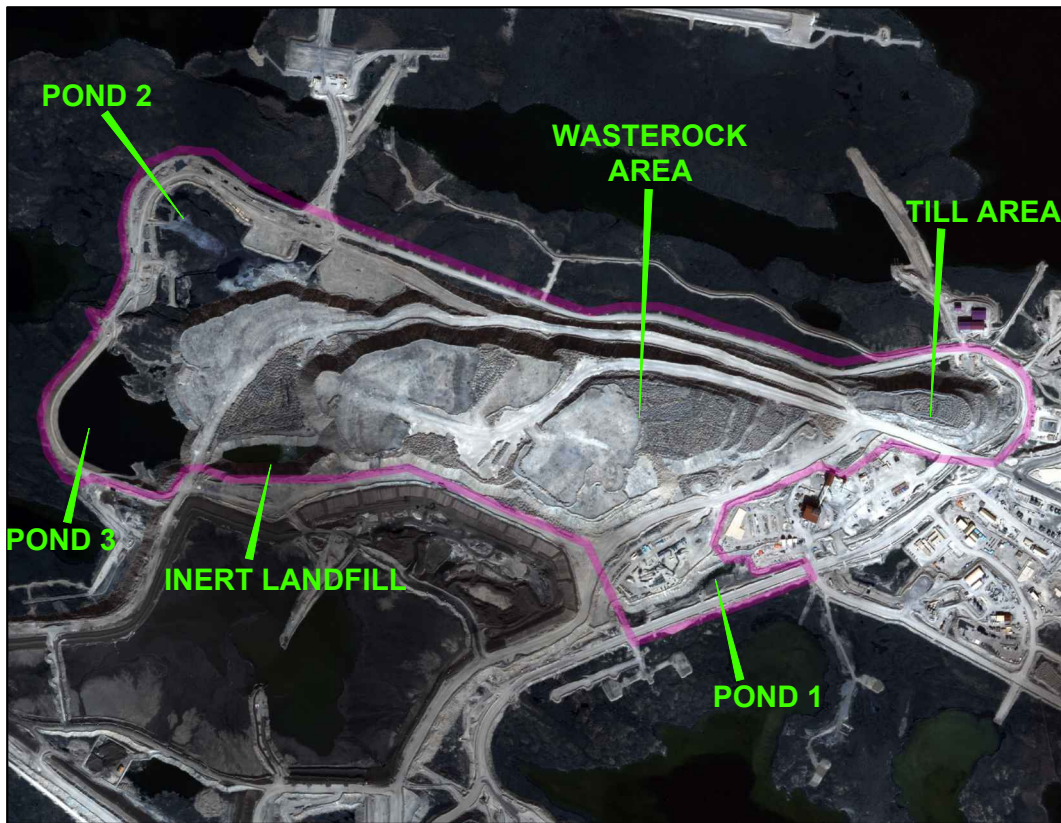
Activity	2010	2011	2012	2013	2014	2015	2016	2017	2018	2019	2020	2021	2022	2023	2024	2025	2026	2027	2028	2029	2030
Open Pit Mining A418/A154																					
Underground A418/A154																					
Wet Mining - A21																					
Engineering/Environmental Studies																					
Community & Regulator Engagement																					
Final Design Concepts																					
Detailed Engineering																					
Complete Fish Habitat Construction																					
Decommission Surface Mine Infrastructure																					
Decommission Underground																					
Flood Mine Areas - Clarify Water																					
Decommission Dikes/Sediment Control Structure																					
Performance Monitoring																					
Engineering Inspections																					
Effects Monitoring																					
Reporting																					

PROJECT		DIAVIK DIAMOND MINES NORTHWEST TERRITORIES			
TITLE		CLOSURE ACTIVITY SCHEDULE OPEN-PIT, UNDERGROUND AND DIKE AREAS			
	PROJECT No.	09.1328.0021	FILE No.	0913280021A024	
	DESIGN	TD	25/11/09	SCALE	N.T.S. REV. 0
	CADD	JEF	03/12/10	<b>FIGURE 5-5</b>	
	CHECK	TD	13/12/10		
	REVIEW	GM	13/12/10		

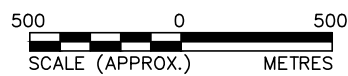
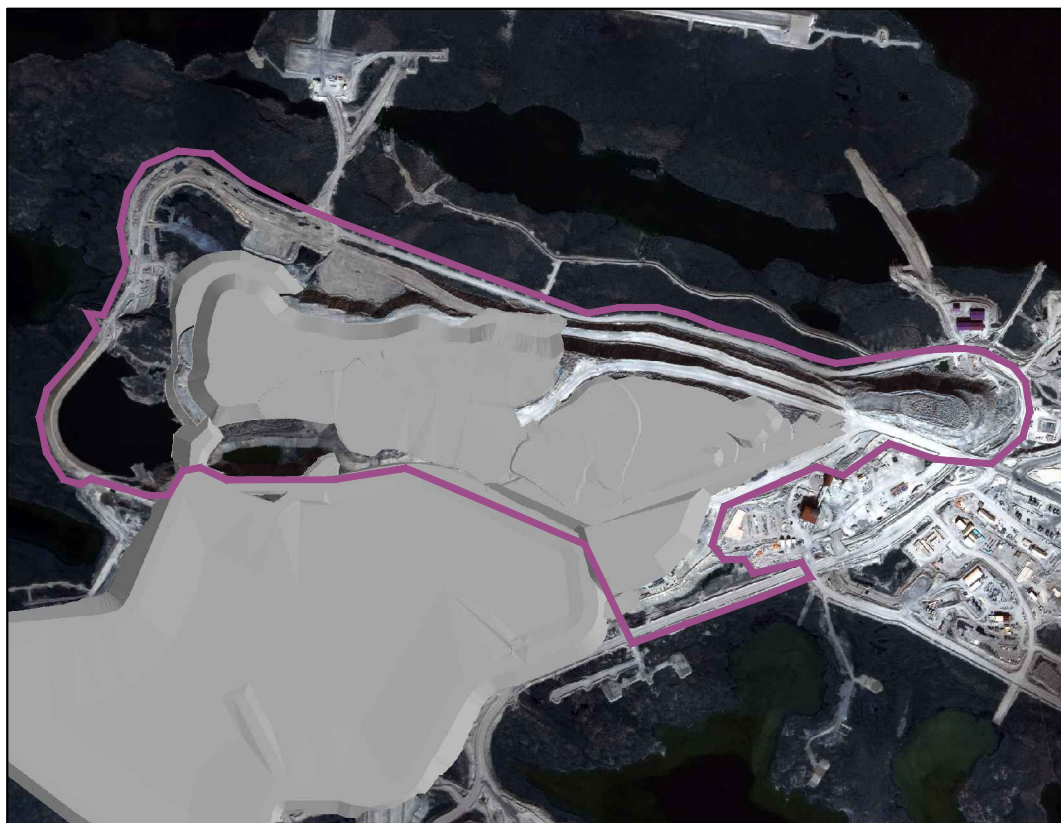
**FIGURE 5-6a  
PRE-DEVELOPMENT  
(2000)**



**FIGURE 5-6b  
EXISTING DEVELOPMENT  
(2009)**



**FIGURE 5-6c  
FINAL DEVELOPMENT  
(2022)**



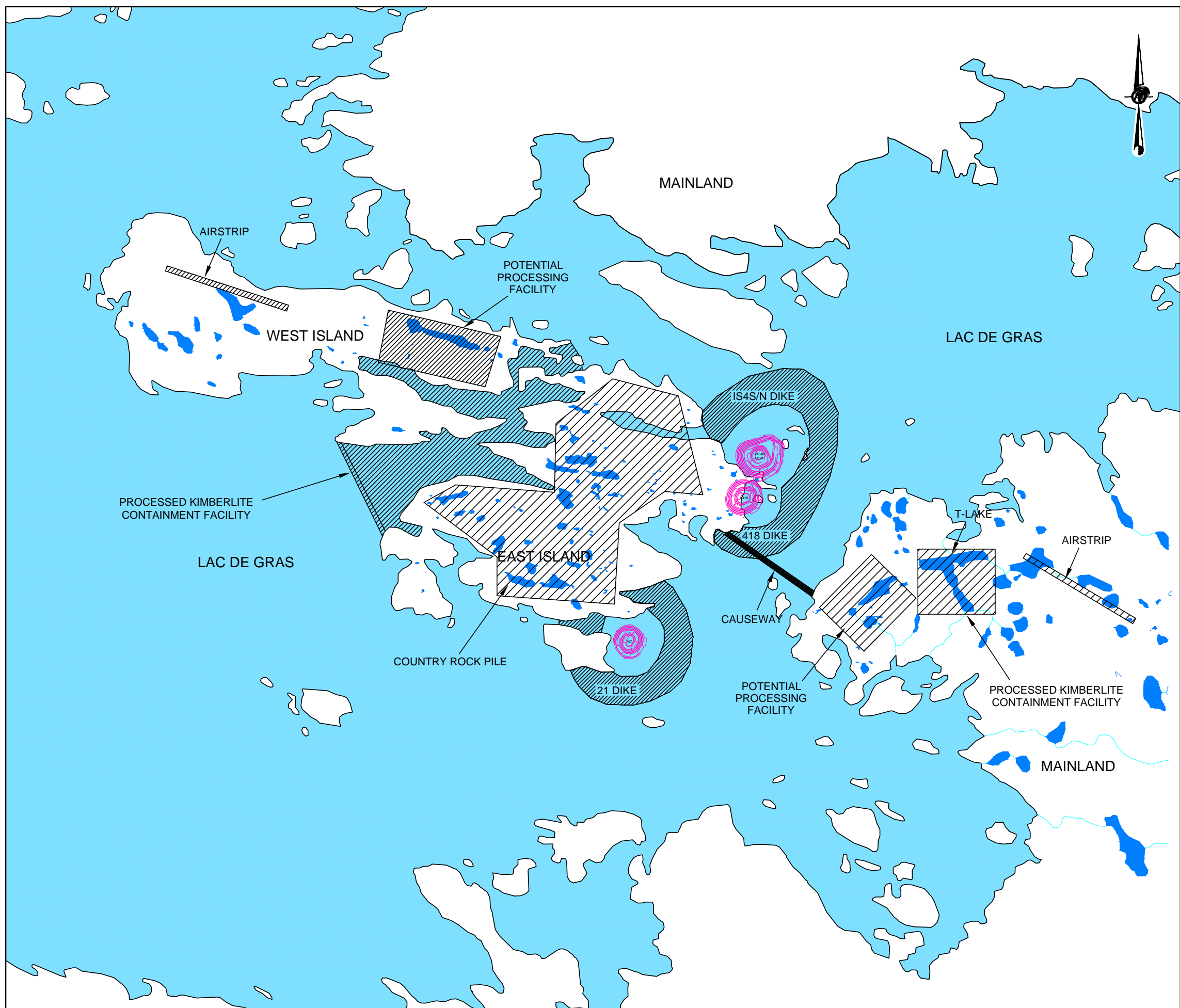
**SOURCE**  
IMAGES PROVIDED BY DDMI

PROJECT		DIAVIK DIAMOND MINES NORTHWEST TERRITORIES	
TITLE		WASTE ROCK AND TILL AREA - SITE DEVELOPMENT	
PROJECT	09.1328.0021	FILE No.	0913280021C025
DESIGN	TD	11/11/09	SCALE AS SHOWN REV. 0
CADD	TRE	26/11/09	
CHECK	TD	13/12/10	
REVIEW	GM	13/12/10	



**FIGURE: 5-6**

L:\2009\1328\_Yknife\09-1328-0021\11000\Report C 11100\Fig 5-7 0913280021C026 Processed Kimberlite containment and Waste Rock Siting options.dwg Dec 15, 2010 - 10:01am

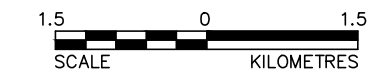


**LEGEND**

- LAC DE GRAS OPTION
- T-LAKE OPTION

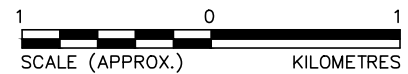
**REFERENCE**

NATIONAL TOPOGRAPHICAL DATA BASE SETS 76C AND 76D, FIRST EDITION.



PROJECT		DIAVIK DIAMOND MINES NORTHWEST TERRITORIES			
TITLE		PROCESSED KIMBERLITE CONTAINMENT AND WASTE ROCK ORIGINAL SITING OPTIONS			
PROJECT		09.1328.0021	FILE No. 0913280021C026		
DESIGN	TD	04/11/09	SCALE	AS SHOWN	REV. 0
CADD	RML	12/11/09	<b>FIGURE: 5-7</b>		
CHECK	TD	13/12/10			
REVIEW	GM	13/12/10			



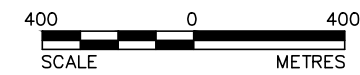
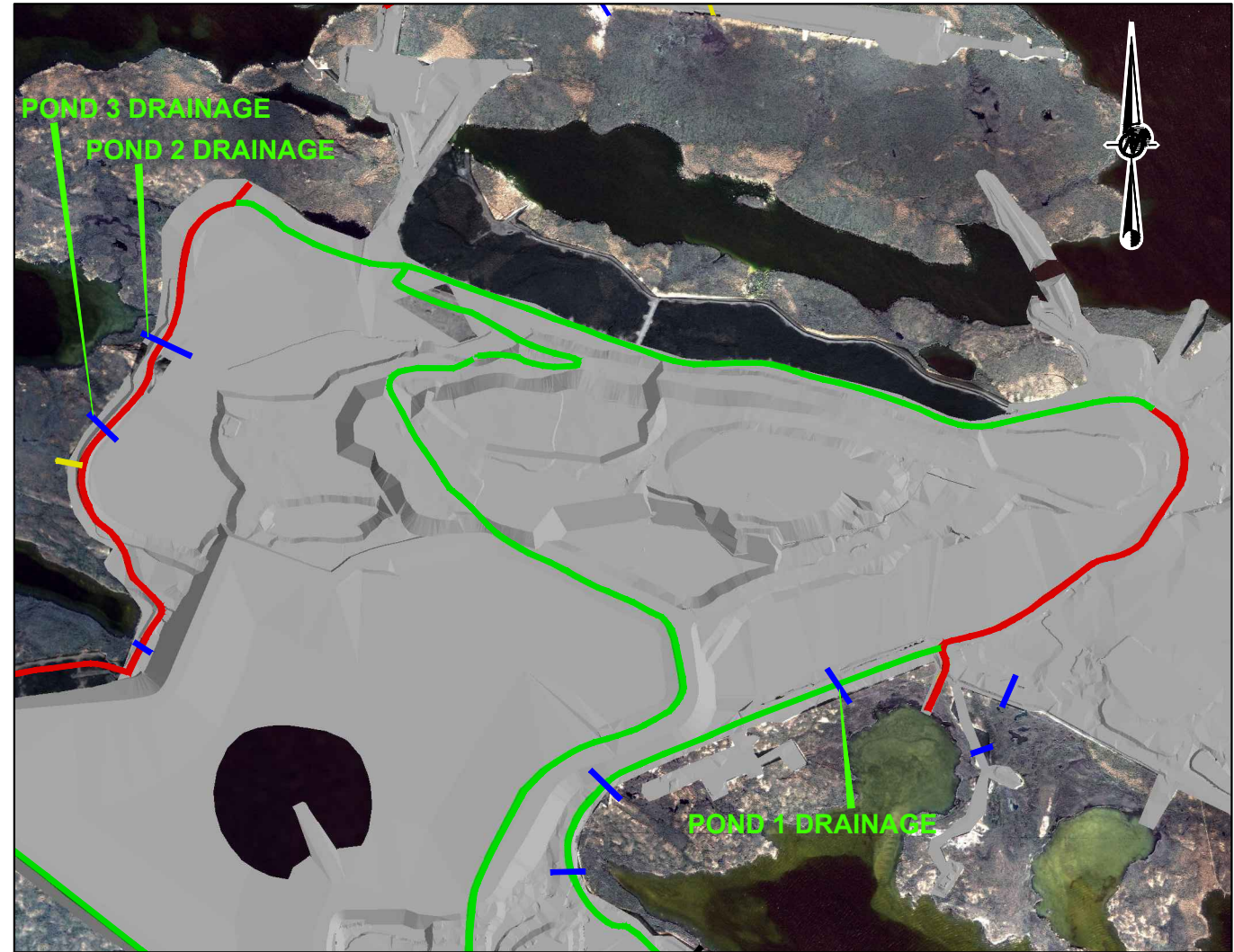


PROJECT		DIAVIK DIAMOND MINES NORTHWEST TERRITORIES			
TITLE		WASTE ROCK TILL AREA DRAINAGE BASINS			
PROJECT		09.1328.0021	FILE No.		0913280021C027
DESIGN	TD	28/10/09	SCALE	AS SHOWN	REV. 0
CADD	TRE	25/11/09	<b>FIGURE: 5-8</b>		
CHECK	TD	13/12/10			
REVIEW	GM	13/12/10			

**SOURCE**  
IMAGE PROVIDED BY DDMI



NOT TO SCALE



**LEGEND**

- SPRING AND FALL MIGRATION
- DRAINAGE RESTORED
- ROAD CROSSING/ACCESS
- FALL MIGRATION


**SOURCE**

IMAGES PROVIDED BY DDMI

PROJECT		<b>DIAVIK DIAMOND MINES NORTHWEST TERRITORIES</b>			
TITLE		<b>PREFERRED FINAL WASTE ROCK AND TILL AREA LANDSCAPES</b>			
PROJECT		09.1328.0021		FILE No. 0913280021C028	
DESIGN	TD	20/11/09	SCALE	AS SHOWN	REV. 0
CADD	JEF	09/12/10			
CHECK	TD	13/12/10	<b>FIGURE: 5-9</b>		
REVIEW	GM	13/12/10			



Activity	2010	2011	2012	2013	2014	2015	2016	2017	2018	2019	2020	2021	2022	2023	2024	2025	2026	2027	2028	2029	2030
Engineering/Environmental Studies	■	■	■	■	■																
Performance Monitoring			■	■	■	■	■	■	■	■	■	■	■	■	■	■					
Community & Regulator Engagement		■		■		■					■		■							■	■
Final Design Concepts						■															
Detailed Engineering								■													
Wildlife Access, Contouring, Cover								■	■	■	■	■	■	■							
Decomission Collection Ponds												■									
Engineering Inspections													■	■	■	■	■				
Effects Monitoring														■			■			■	
Reporting													■	■	■	■	■			■	

PROJECT		DIAVIK DIAMOND MINES NORTHWEST TERRITORIES			
TITLE		<b>CLOSURE ACTIVITY SCHEDULE WASTE ROCK AND TILL AREA</b>			
	PROJECT No.	09.1328.0021		FILE No.	0913280021C029
	DESIGN	TD	25/11/09	SCALE	N.T.S.   REV. D
	CADD	JEF	03/12/10		
	CHECK	TD	13/12/10		
	REVIEW	GM	13/12/10		
			<b>FIGURE 5-10</b>		

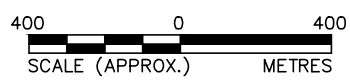
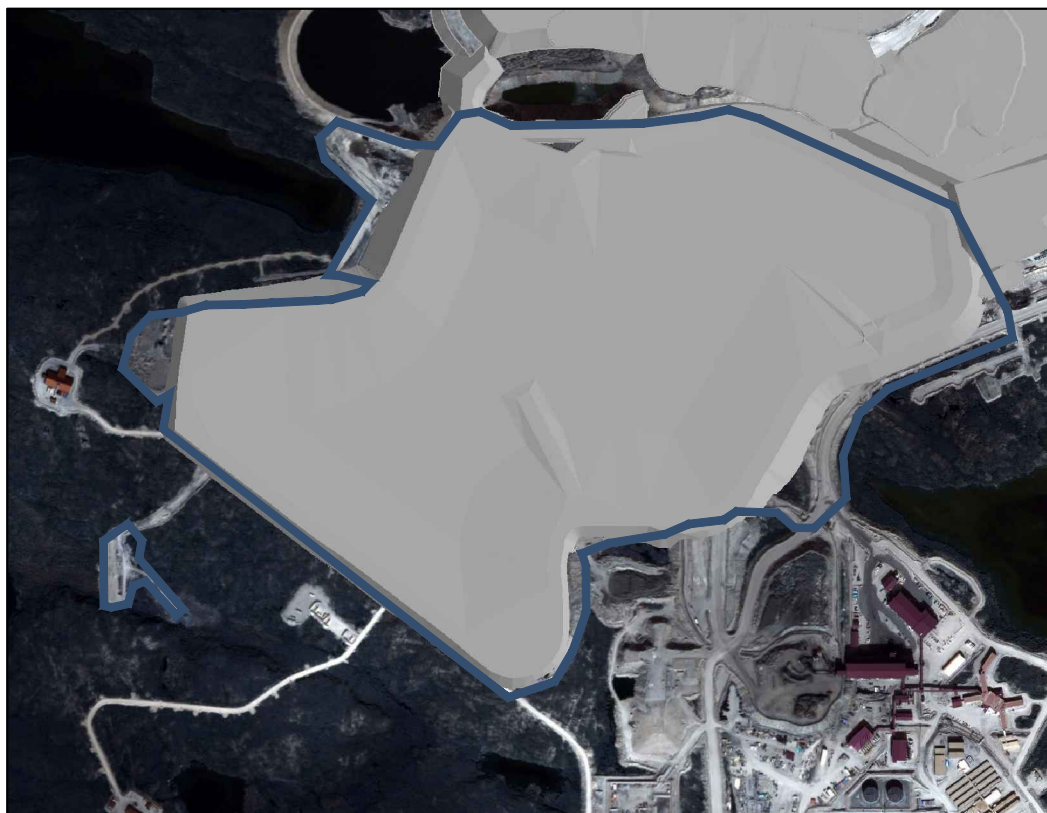
**FIGURE 5-11a  
PRE-DEVELOPMENT  
(2000)**



**FIGURE 5-11b  
EXISTING DEVELOPMENT  
(2009)**



**FIGURE 5-11c  
FINAL DEVELOPMENT  
(2022)**

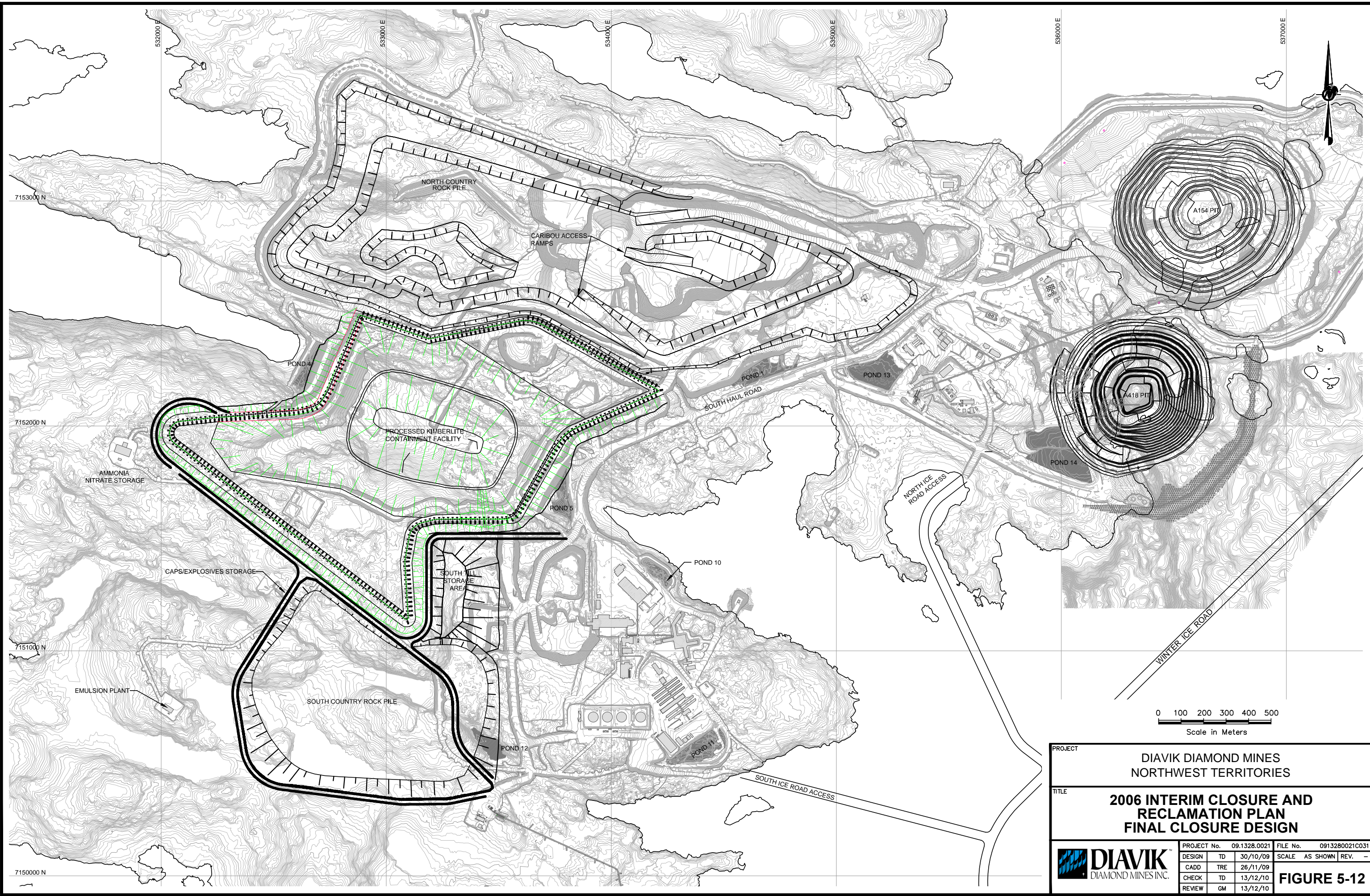


**SOURCE**  
IMAGES PROVIDED BY DDMI

PROJECT		DIAVIK DIAMOND MINES NORTHWEST TERRITORIES	
TITLE		PROCESSED KIMBERLITE CONTAINMENT AREA - SITE DEVELOPMENT	
PROJECT	09.1328.0021	FILE No.	0913280021C030
DESIGN	TD	11/11/09	SCALE AS SHOWN REV. 0
CADD	TRE	26/11/09	
CHECK	TD	13/12/10	
REVIEW	GM	13/12/10	
			<b>FIGURE: 5-11</b>



L:\2009\1328 Yknife\09-1328-0021\11000\Report C 11100\Fig 5-12 0913280021C031 Final Closure.dwg Dec 15, 2010 - 9:46am



PROJECT		DIAVIK DIAMOND MINES NORTHWEST TERRITORIES	
TITLE		<b>2006 INTERIM CLOSURE AND RECLAMATION PLAN FINAL CLOSURE DESIGN</b>	
PROJECT No. 09.1328.0021		FILE No. 0913280021C031	
DESIGN	TD	30/10/09	SCALE AS SHOWN   REV. -
CADD	TRE	26/11/09	
CHECK	TD	13/12/10	
REVIEW	GM	13/12/10	

**DIAMOND MINES INC.**

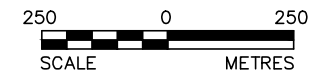
**FIGURE 5-12**



L:\2009\1328\_Yknife\09-1328-0021\11000\Report\_C\_11100\Fig 5-13\_0913280021C032\_Preferred\_Final\_PKG\_Landscape.DWG Dec 15, 2010 - 9:47am



NOT TO SCALE



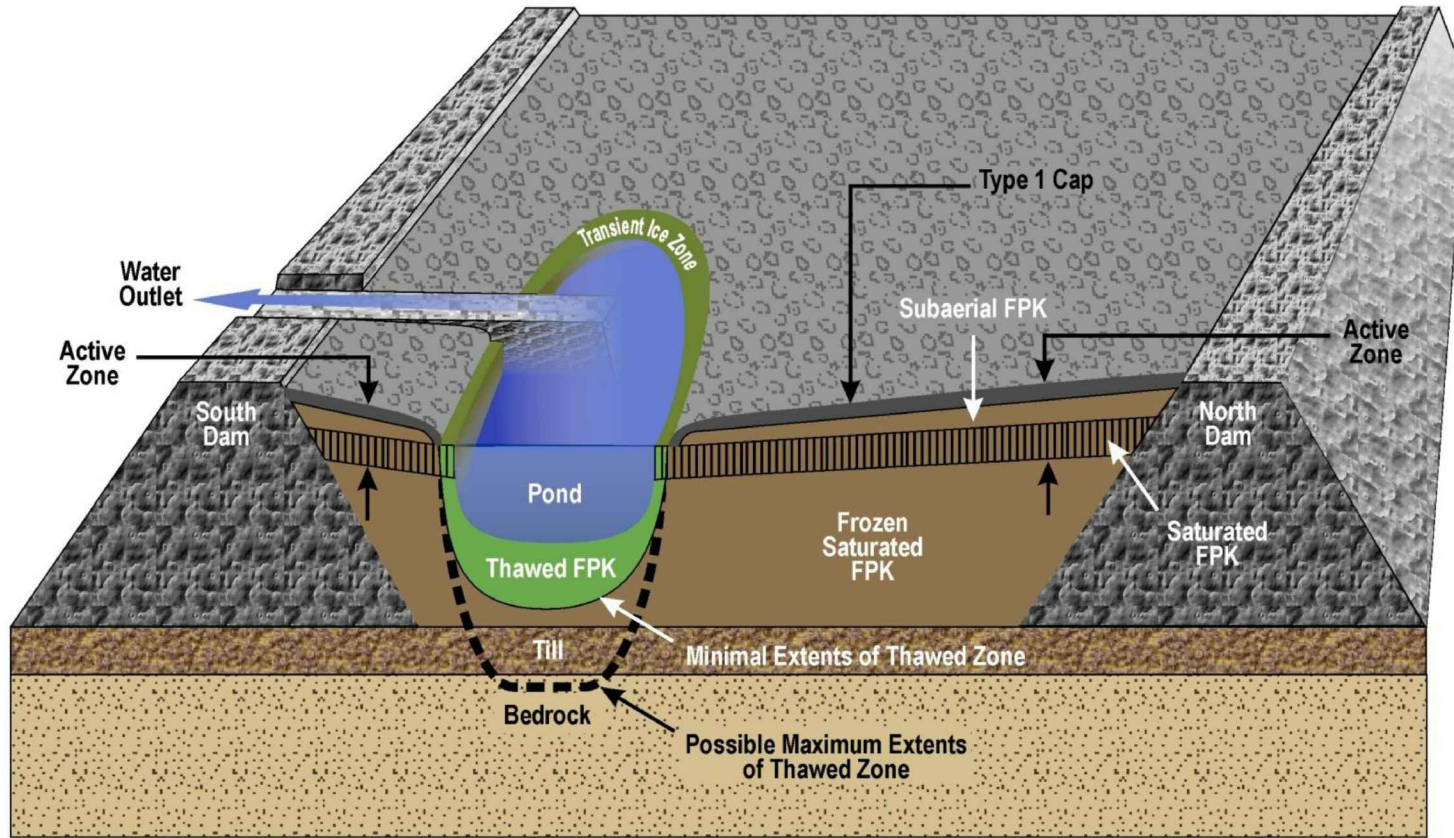
**LEGEND**

<span style="color: red;">—</span>	SPRING AND FALL MIGRATION
<span style="color: blue;">—</span>	DRAINAGE RESTORED
<span style="color: yellow;">—</span>	ROAD CROSSING/ACCESS
<span style="color: green;">—</span>	FALL MIGRATION

**SOURCE**  
IMAGES PROVIDED BY DDMI

PROJECT		DIAVIK DIAMOND MINES NORTHWEST TERRITORIES			
TITLE		PREFERRED FINAL PROCESSED KIMBERLITE CONTAINMENT LANDSCAPE			
PROJECT	09.1328.0021	FILE No.	0913280021C040		
DESIGN	TD	20/11/09	SCALE	AS SHOWN	REV. 0
CADD	TRE	25/11/09			
CHECK	TD	13/12/10	<b>FIGURE: 5-13</b>		
REVIEW	GM	13/12/10			





SCHEMATIC ONLY, NOT TO SCALE

PROJECT		DIAVIK DIAMOND MINES NORTHWEST TERRITORIES	
TITLE		<b>PREFERRED FINAL PROCESSED KIMBERLITE CONTAINMENT DESIGN CONCEPT</b>	
PROJECT	09.1328.0021	FILE No.	0913280021C033
DESIGN	DM	25/11/10	SCALE AS SHOWN REV. 0
CADD	JEF	02/12/10	<b>FIGURE:5-14</b>
CHECK	TD	13/12/10	
REVIEW	GM	13/12/10	



Activity	2010	2011	2012	2013	2014	2015	2016	2017	2018	2019	2020	2021	2022	2023	2024	2025	2026	2027	2028	2029	2030
PK Deposition																					
Revised Water Management																					
Engineering/Environmental Studies																					
Community & Regulator Engagement																					
Final Design Concepts																					
Detailed Engineering																					
Placement of Final Surface and Wildlife Access																					
Outlet Preparation																					
Decomission Collection Ponds																					
Infrastructure Decomissioning																					
Performance Monitoring																					
Engineering Inspections																					
Effects Monitoring																					
Reporting																					

PROJECT		DIAVIK DIAMOND MINES NORTHWEST TERRITORIES			
TITLE		<b>CLOSURE ACTIVITY SCHEDULE - PROCESSED KIMBERLITE CONTAINMENT AREA</b>			
PROJECT No.		09.1328.0021		FILE No. 0913280021C034	
DESIGN	TD	25/11/09		SCALE	N.T.S. REV. 0
CADD	JEF	25/11/09		<b>FIGURE 5-15</b>	
CHECK	TD	13/12/10			
REVIEW	GM	13/12/10			



**FIGURE 5-16a  
PRE-DEVELOPMENT  
(2000)**



**FIGURE 5-16b  
EXISTING DEVELOPMENT  
(2009)**



**FIGURE 5-16c  
FINAL DEVELOPMENT  
(2022)**

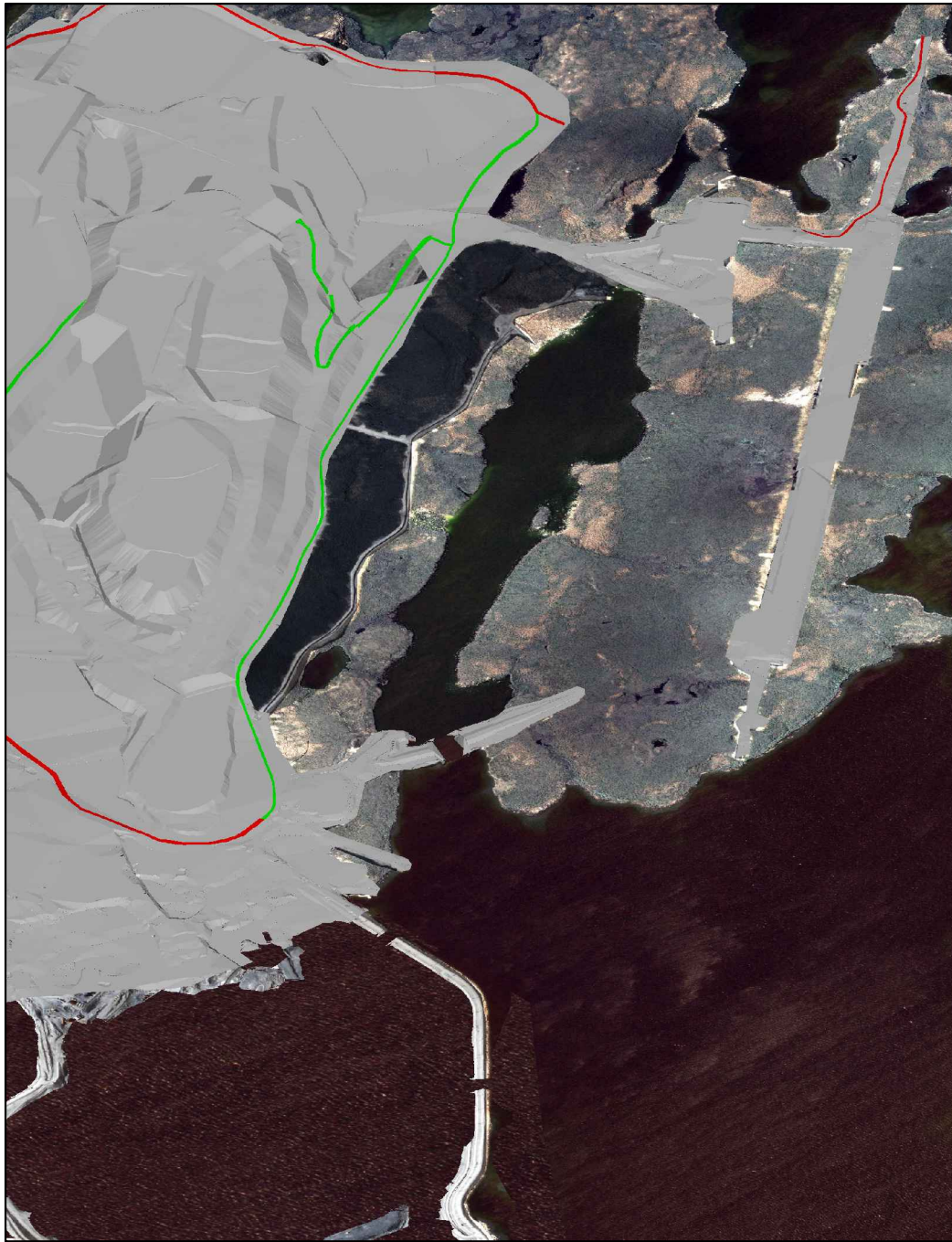


**SOURCE**  
IMAGES PROVIDED BY DDMI

PROJECT		DIAVIK DIAMOND MINES NORTHWEST TERRITORIES	
TITLE		NORTH INLET AREA - SITE DEVELOPMENT	
PROJECT	09.1328.0021	FILE No.	0913280021C035
DESIGN	TD	11/11/09	SCALE AS SHOWN REV. 0
CADD	TRE	25/11/09	
CHECK	TD	13/12/10	
REVIEW	GM	13/12/10	



**FIGURE: 5-16**




NOT TO SCALE

PROJECT		DIAVIK DIAMOND MINES NORTHWEST TERRITORIES			
TITLE		PREFERRED FINAL NORTH INLET LANDSCAPE			
PROJECT		09.1328.0021	FILE No.		0913280021C036
DESIGN	TD	20/11/09	SCALE	AS SHOWN	REV. 0
CADD	JEF	09/12/09	<b>FIGURE: 5-17</b>		
CHECK	TD	13/12/10			
REVIEW	GM	13/12/10			

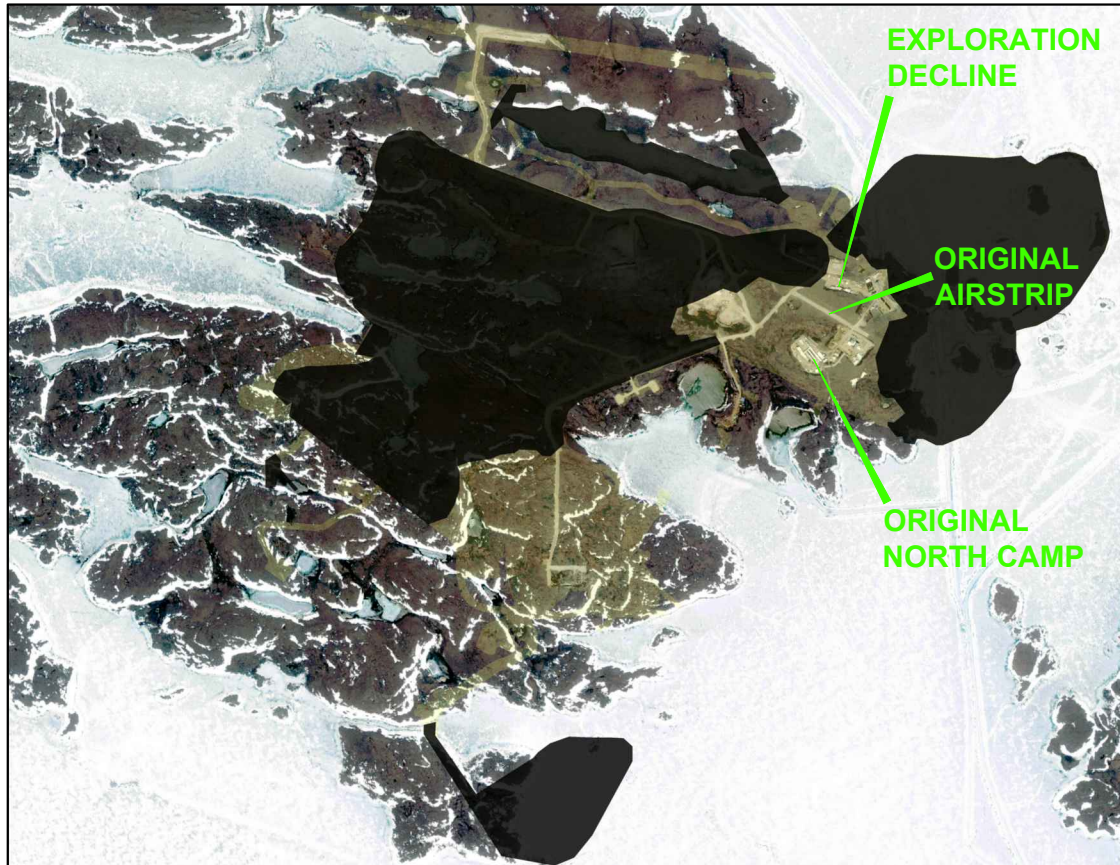
**SOURCE**  
IMAGE PROVIDED BY DDMI



Activity	2010	2011	2012	2013	2014	2015	2016	2017	2018	2019	2020	2021	2022	2023	2024	2025	2026	2027	2028	2029	2030
Mine Water Treatment																					
Environmental Studies																					
Community & Regulator Engagement																					
Final Design Concept																					
Detailed Engineering																					
Decommision East Dam																					
Performance Monitoring																					
Engineering Inspections																					
Effects Monitoring																					
Reporting																					

PROJECT		DIAVIK DIAMOND MINES NORTHWEST TERRITORIES			
TITLE		CLOSURE ACTIVITY SCHEDULE NORTH INLET AREA			
	PROJECT No.	09.1328.0021	FILE No.	0913280021C037	
	DESIGN	TD	25/11/09	SCALE	N.T.S. REV. 0
	CADD	JEF	25/11/09		
	CHECK	TD	13/12/10		
	REVIEW	GM	13/12/10		
			<b>FIGURE 5-18</b>		

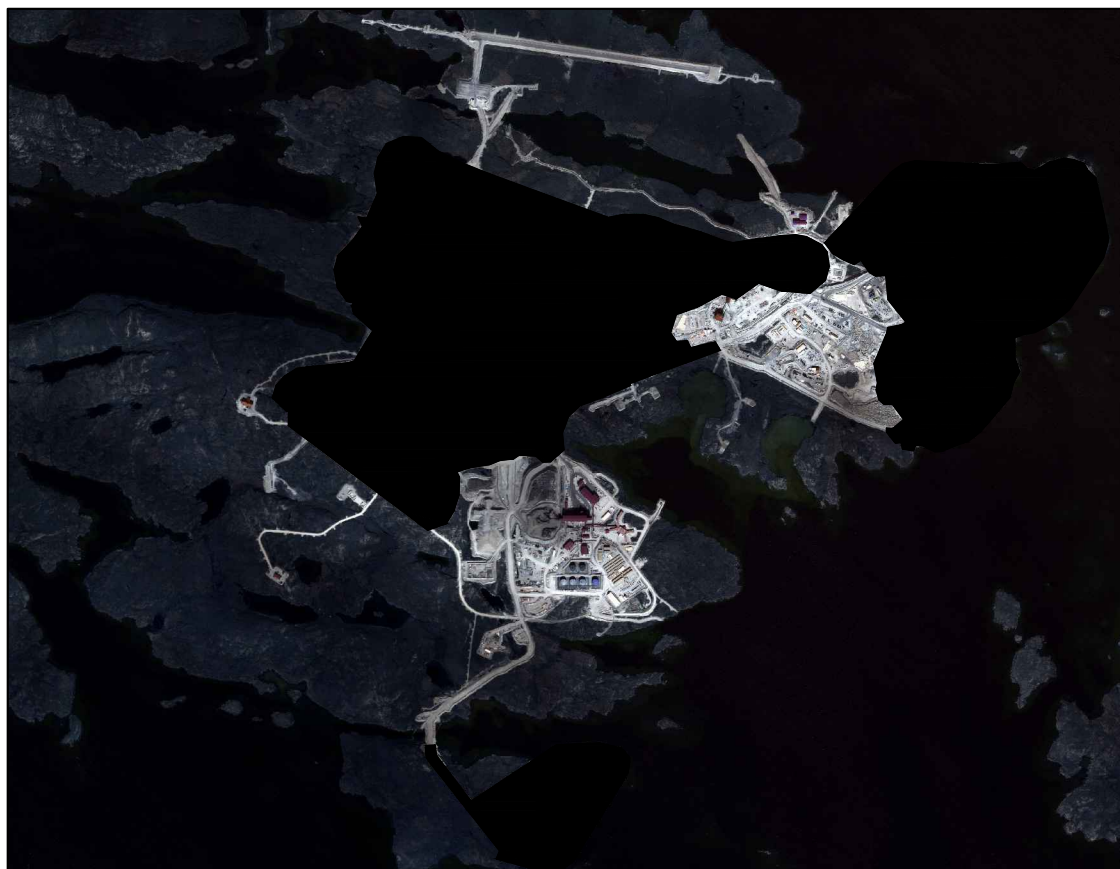
**FIGURE 5-19a  
PRE-DEVELOPMENT  
(2000)**



**FIGURE 5-19b  
EXISTING DEVELOPMENT  
(2009)**



**FIGURE 5-19c  
FINAL DEVELOPMENT  
(2022)**



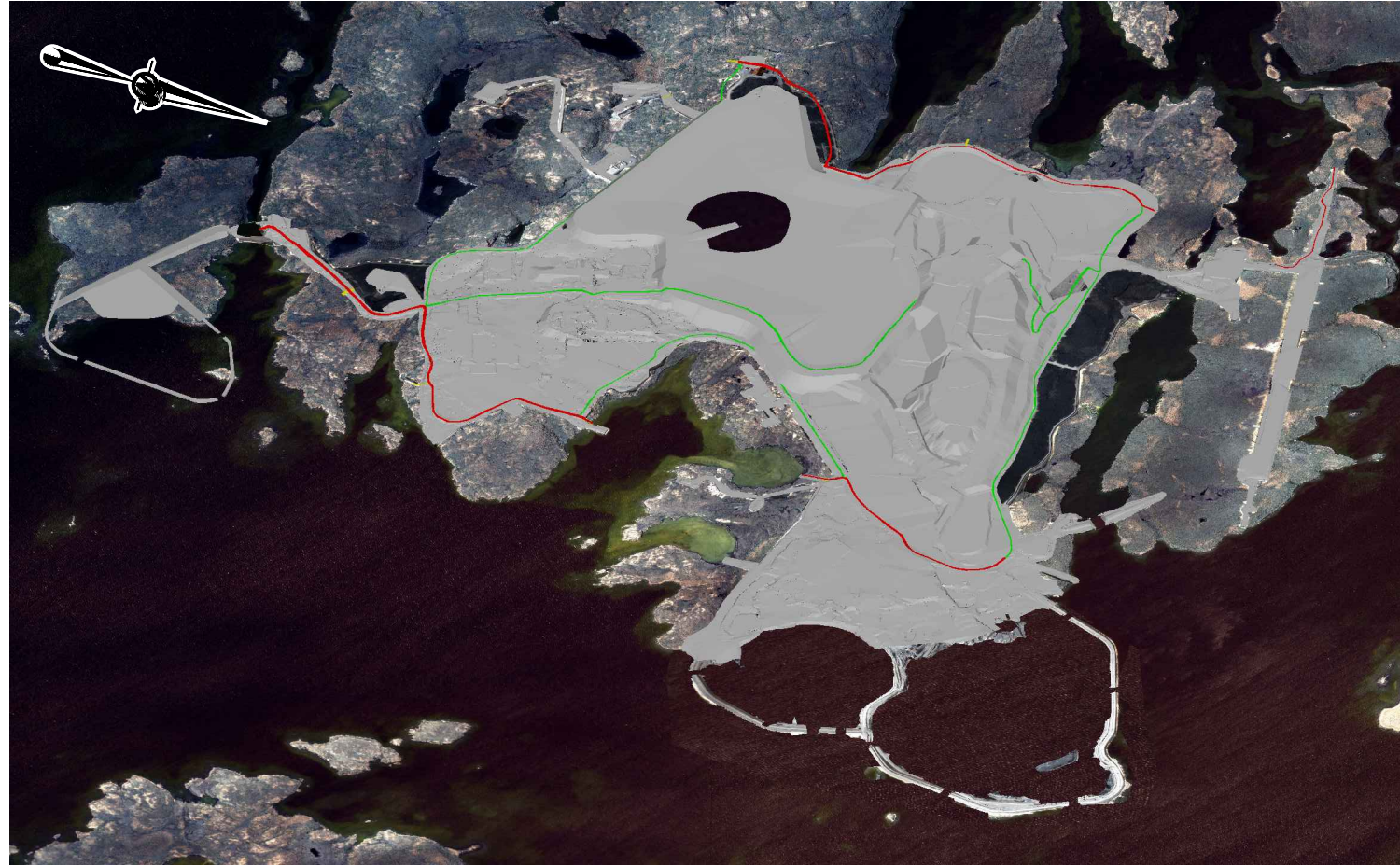
1 0 1  
SCALE (APPROX.) KILOMETRES

**SOURCE**  
IMAGES PROVIDED BY DDMI

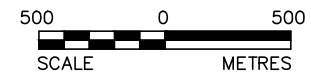
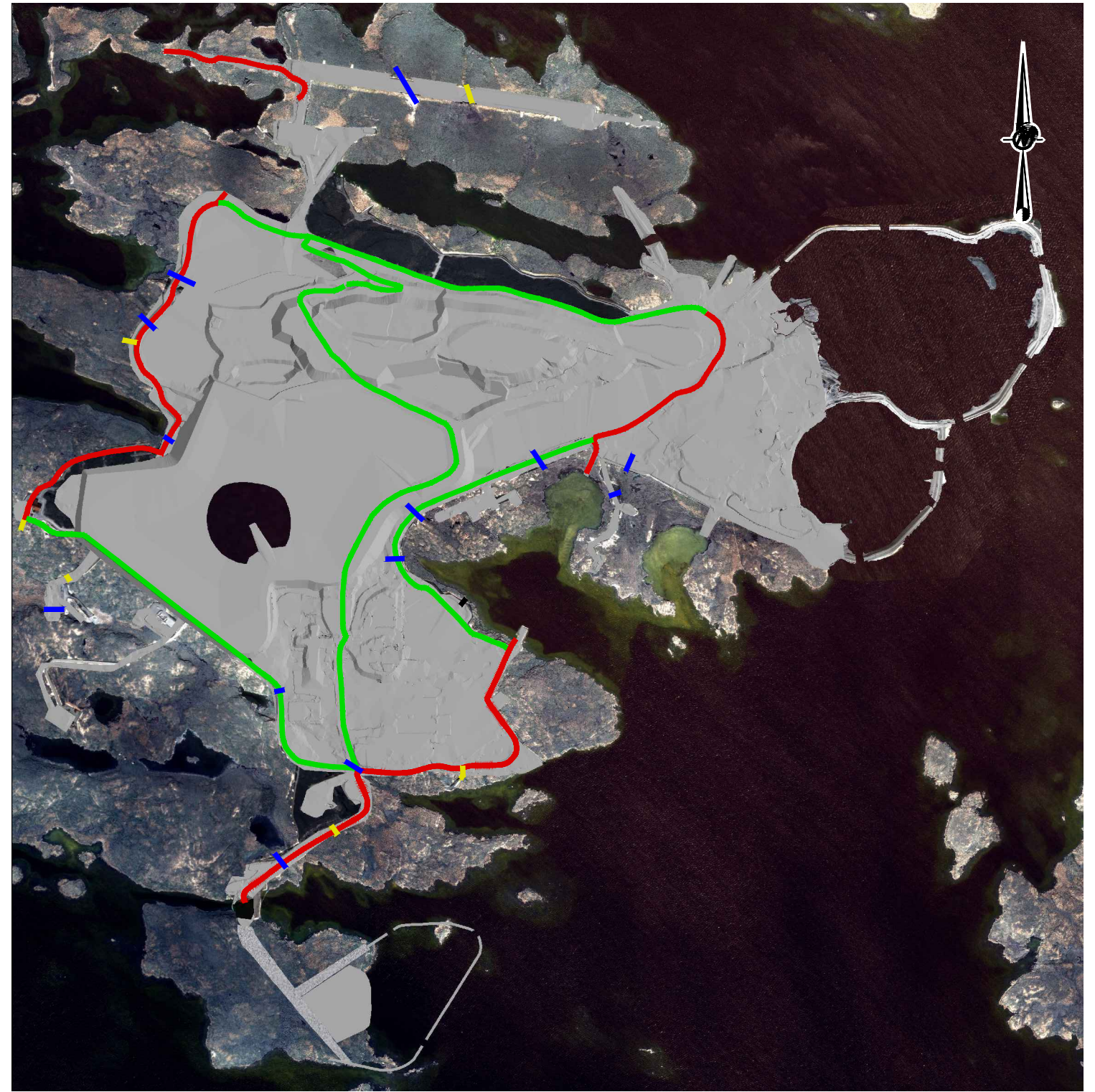
PROJECT		DIAVIK DIAMOND MINES NORTHWEST TERRITORIES	
TITLE		MINE INFRASTRUCTURE AREA - SITE DEVELOPMENT	
PROJECT	09.1328.0021	FILE No.	0913280021C038
DESIGN	TD	11/11/09	SCALE AS SHOWN REV. 0
CADD	TRE	25/11/09	
CHECK	TD	13/12/10	
REVIEW	GM	13/12/10	



**FIGURE: 5-19**



NOT TO SCALE



**LEGEND**

- SPRING AND FALL MIGRATION
- DRAINAGE RESTORED
- ROAD CROSSING/ACCESS
- FALL MIGRATION

**SOURCE**

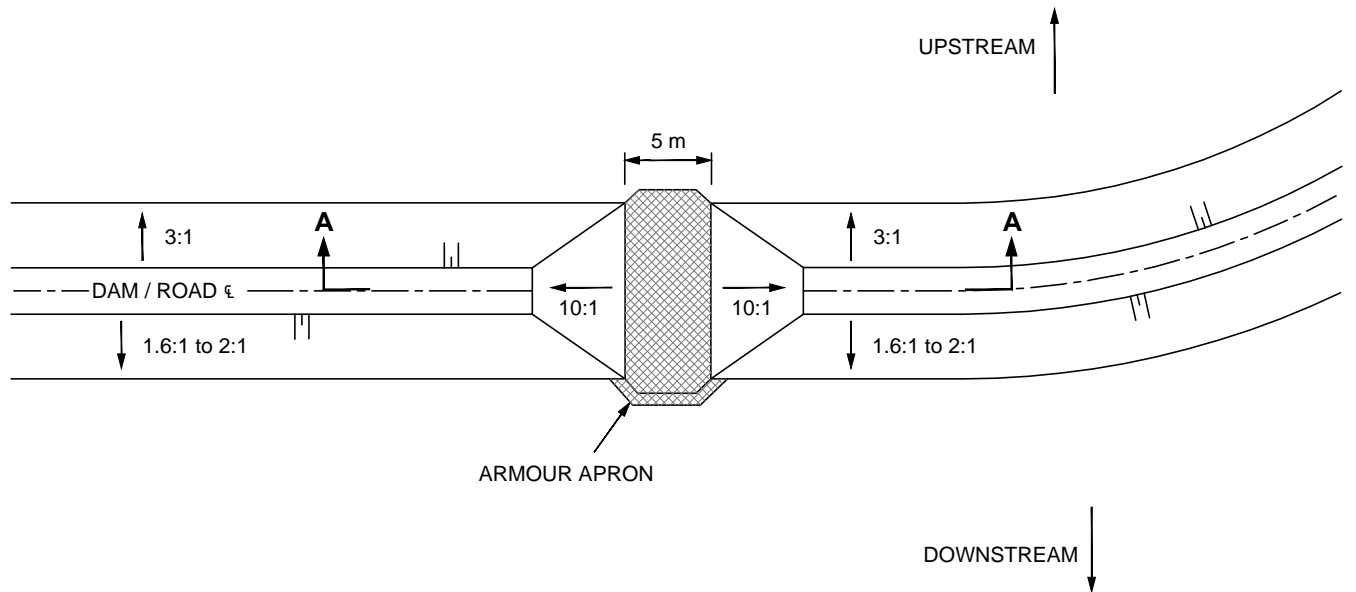
IMAGES PROVIDED BY DDMI

PROJECT		<b>DIAVIK DIAMOND MINES NORTHWEST TERRITORIES</b>			
TITLE		<b>PREFERRED FINAL MINE INFRASTRUCTURE LANDSCAPE</b>			
PROJECT		09.1328.0021	FILE No.		0913280021C040
DESIGN	TD	20/11/09	SCALE	AS SHOWN	REV. 0
CADD	TRE	25/11/09			
CHECK	TD	13/12/10	<b>FIGURE: 5-20</b>		
REVIEW	GM	13/12/10			

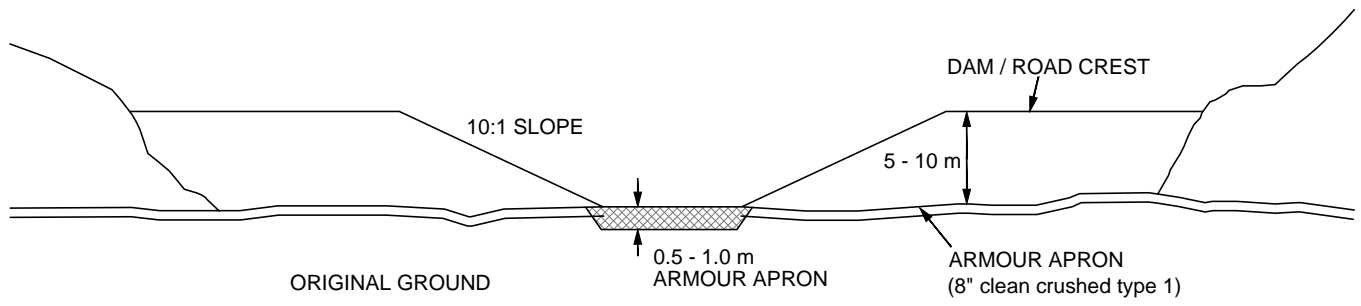




L:\2009\1328\_YKnife\09-1328-0021\11000\Report C 11100\Fig 5-21 0913280021C039 Stream Drainage Reclamation Typical Section.dwg Dec 15, 2010 - 9:58am



**PLAN VIEW**



**SECTION A-A**

SCHEMATIC ONLY, NOT TO SCALE


PROJECT		DIAVIK DIAMOND MINES NORTHWEST TERRITORIES			
TITLE		STREAM DRAINAGE RECLAMATION TYPICAL SECTION			
PROJECT	09.1328.0021	FILE No.	0913280021C039		
DESIGN	TD	16/10/09	SCALE	AS SHOWN	REV. 0
CADD	TRE	25/11/09	<b>FIGURE: 5-21</b>		
CHECK	TD	13/12/10			
REVIEW	GM	13/12/10			

**SOURCE**


ORIGINAL DRAWING PROVIDED BY DDMI



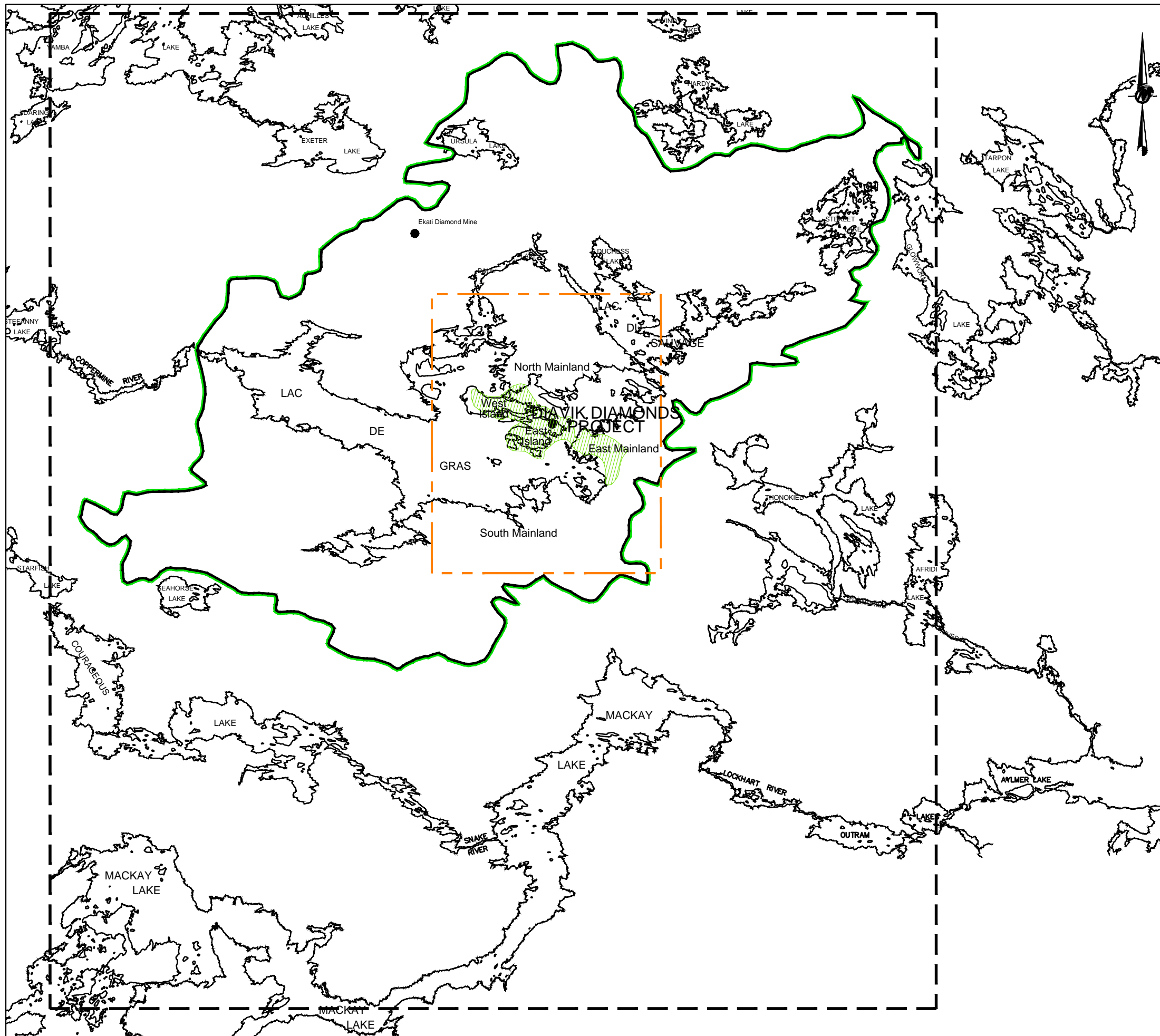
Activity	2010	2011	2012	2013	2014	2015	2016	2017	2018	2019	2020	2021	2022	2023	2024	2025	2026	2027	2028	2029	2030
Accomodation/Power/Transportation Required																					
Engineering/Environmental Studies																					
Community & Regulator Engagement																					
Final Decomissioning Plan																					
Inventory of Assets																					
Commercial Arrangements - Sale/Transfer of Assets																					
Decomission Process and Paste Plants																					
Decomission Explosives Plant and Storage																					
Decomission Accomodation and Other Buildings																					
Decomission Fuel Storage and Power																					
Decomission Waste Transfer																					
Decomission Roads, Plantsite, Laydown																					
Decomission Collection Ponds & Pipelines																					
Decomission Final Camp, Airstrip and Landfill																					
Performance Monitoring																					
Engineering Inspections																					
Effects Monitoring																					
Reporting																					

PROJECT		DIAVIK DIAMOND MINES NORTHWEST TERRITORIES			
TITLE		<b>CLOSURE ACTIVITY SCHEDULE MINE INFRASTRUCTURE AREA</b>			
	PROJECT No.	09.1328.0021		FILE No.	091328021C041
	DESIGN	TD	25/11/09	SCALE	N.T.S. REV. 0
	CADD	JEF	25/11/09		
	CHECK	TD	13/12/10		
	REVIEW	GM	13/12/10		
			<b>FIGURE 5-22</b>		

Activity	2010	2011	2012	2013	2014	2015	2016	2017	2018	2019	2020	2021	2022	2023	2024	2025	2026	2027	2028	2029	2030
Open Pit Mining A418/A154																					
Underground A418/A154																					
Wet Mining - A21																					
Dump Development																					
Re-Mining for Backfill																					
PK Deposition																					
Mine Water Treatment																					
Accommodation/Power/Transportation Required																					
Winter Road																					
Revised Water Management - PKC																					
Engineering/Environmental Studies																					
Community & Regulator Engagement																					
Final Design Concepts/Decommissioning Plan																					
Detailed Engineering																					
Wildlife Access, Contouring, Cover - Wasterock and Till																					
Inventory of Assets																					
Commercial Arrangements - Sale/Transfer of Assets																					
Complete Fish Habitat Construction																					
Decommission Collection Ponds 1,2,3																					
PKC Outlet Preparation																					
Placement of Final Surface and Wildlife Access - PKC																					
Decommission Surface Mine Infrastructure																					
Decommission Underground																					
Decommission Process and Paste Plants																					
Decommission Explosives Plant and Storage																					
Flood Mine Areas - Clarify Water																					
Decommission Accommodation and Other Buildings																					
Decommission Fuel Storage and Power																					
Decommission Collection Ponds 4,5,6,7																					
Decommission Dikes/Sediment Control Structure																					
PKC Infrastructure Decommissioning																					
Decommission Waste Transfer																					
Decommission Roads, Plantsite, Laydown																					
Decommission Collection Ponds & Pipelipeline 10,11,12,13																					
Decommission North Inlet East Dam																					
Decommission Final Camp, Airstrip and Landfill																					
Performance Monitoring																					
Engineering Inspections																					
Effects Monitoring																					
Reporting																					

PROJECT		<b>DAVIK DIAMOND MINES NORTHWEST TERRITORIES</b>				
TITLE		<b>INTEGRATED SCHEDULE OF ACTIVITIES PERMANENT CLOSURE</b>				
	PROJECT No.	09.1328.0021		FILE No.	0913280021C042	
	DESIGN	TD	25/11/09	SCALE	N.T.S.	REV. D
	CADD	JEF	25/11/09	<b>FIGURE 8-1</b>		
	CHECK	TD	13/12/10			
	REVIEW	GM	13/12/10			

L:\2009\1328\_Yknife\09-1328-0021\11000\Report\_C 11100\Fig 9-1 0913280021C043 Regional Cumulative Study Area.dwg Dec 15, 2010 10:04am



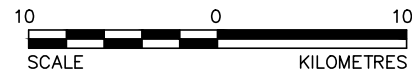
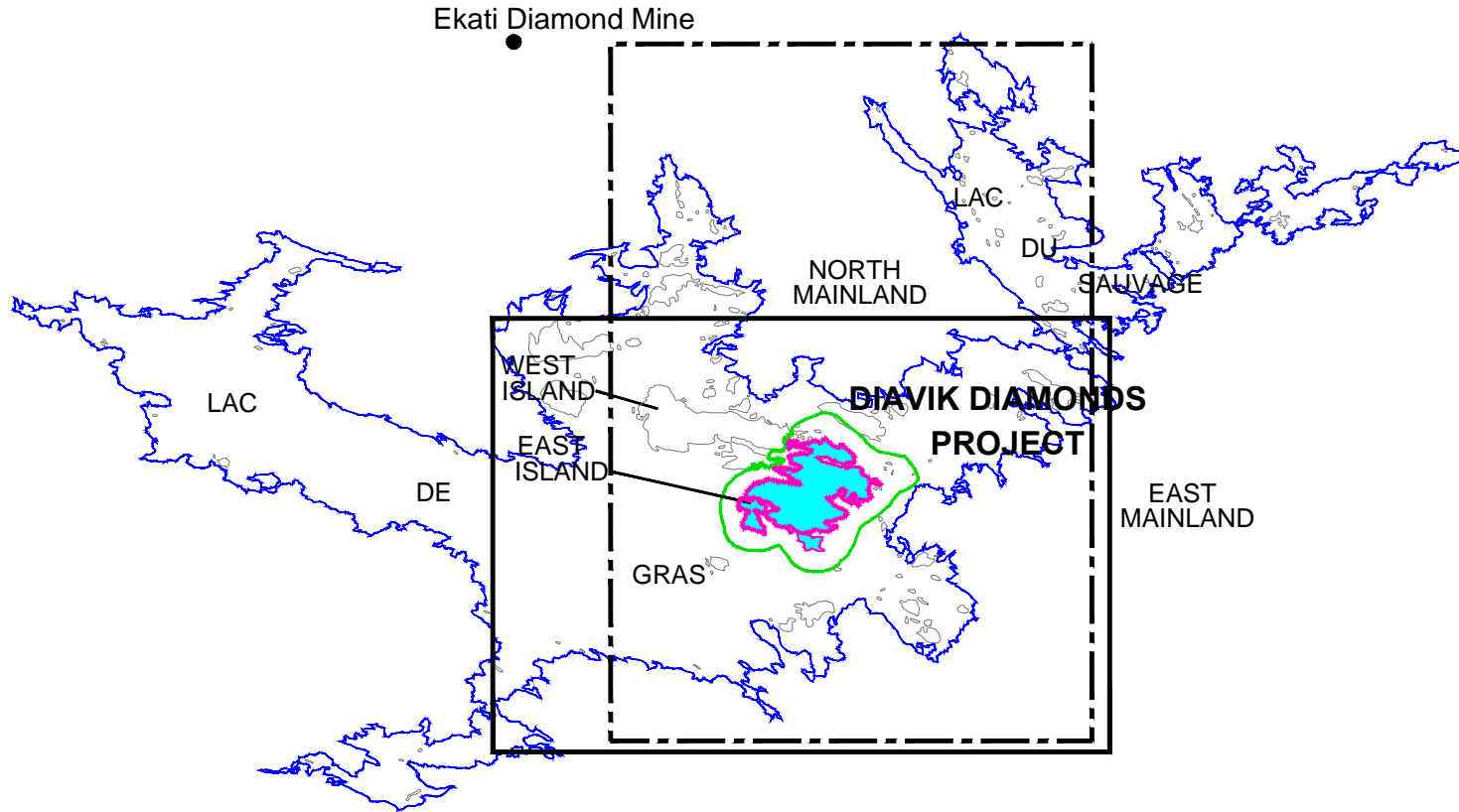
**LEGEND**

- WILDLIFE
- VEGETATION AND TERRAIN
- FISH AND WATER
- HERITAGE RESOURCES
- AIR QUALITY

**REFERENCE**  
 NATIONAL TOPOGRAPHICAL DATABASE  
 SETS 76C, 76D, 75M and 75N  
 FROM GEOMATICS CANADA



PROJECT		<b>DIAMOND MINES NORTHWEST TERRITORIES</b>			
TITLE		<b>REGIONAL / CUMMULATIVE STUDY AREAS</b>			
	PROJECT	09.1328.0021	FILE No.	0913280021C043	
	DESIGN	TD	04/11/09	SCALE	AS SHOWN
	CADD	TRE	26/11/09	REV.	0
	CHECK	TD	13/12/10	<b>FIGURE: 9-1</b>	
REVIEW	GM	13/12/10			



**LEGEND**

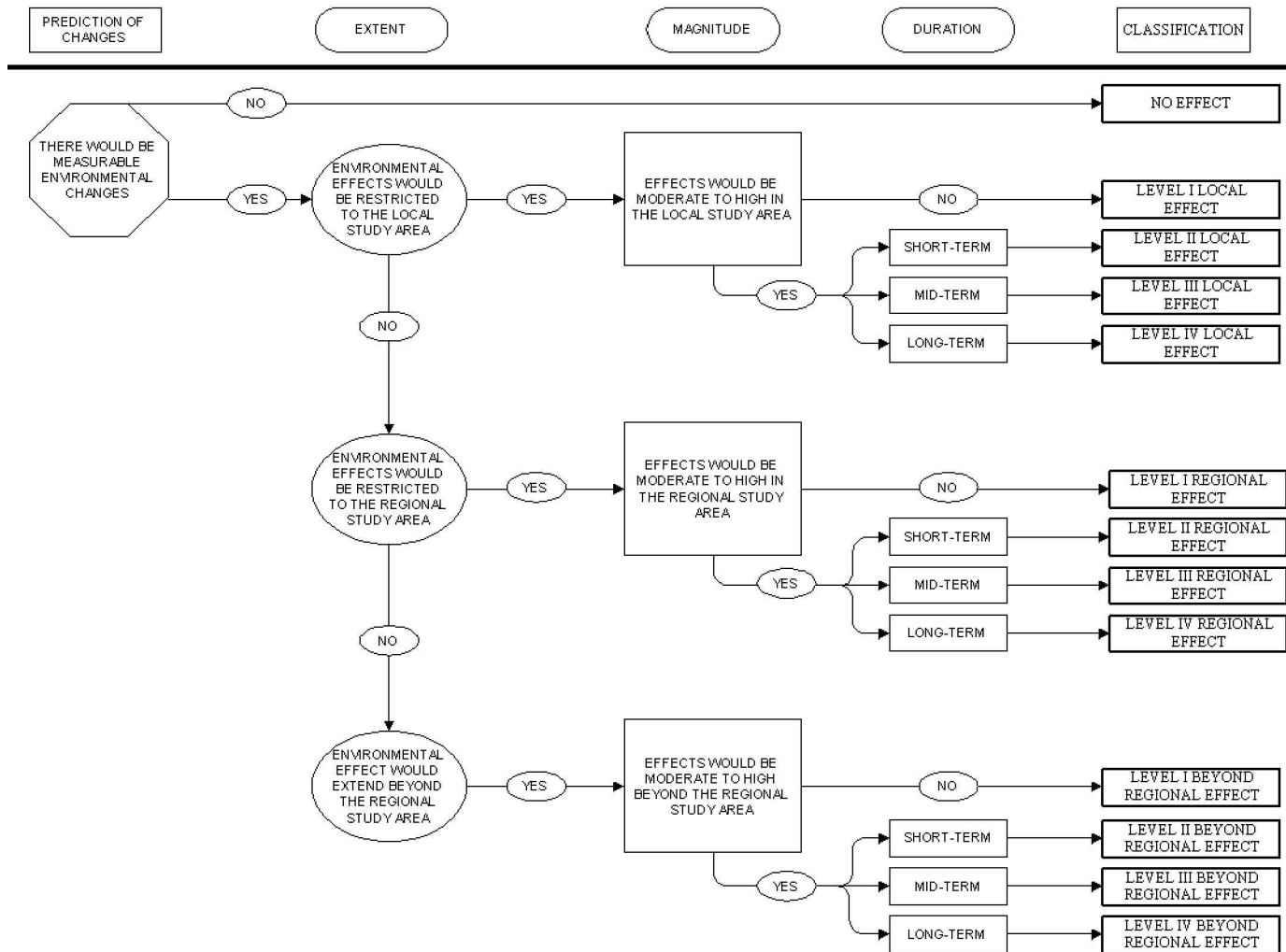
- HERITAGE RESOURCES
- AIR QUALITY
- WILDLIFE LOCAL
- FISH AND WATER
- VEGETATION AND TERRAIN

**REFERENCE**

NATIONAL TOPOGRAPHICAL DATA BASE SETS 76C AND 76D, FIRST EDITION  
 SOURCE: Fedirchuk McCullough & Associates Ltd., 1995

PROJECT		<b>DIAVIK DIAMOND MINES NORTHWEST TERRITORIES</b>			
TITLE		<b>LOCAL STUDY AREA</b>			
PROJECT		09.1328.0021		FILE No. 0913280021C044	
DESIGN	TD	11/11/09		SCALE	AS SHOWN
CADD	JEF	13/11/09		REV.	0
CHECK	TD	13/12/10		<b>FIGURE: 9-2</b>	
REVIEW	GM	13/12/10			



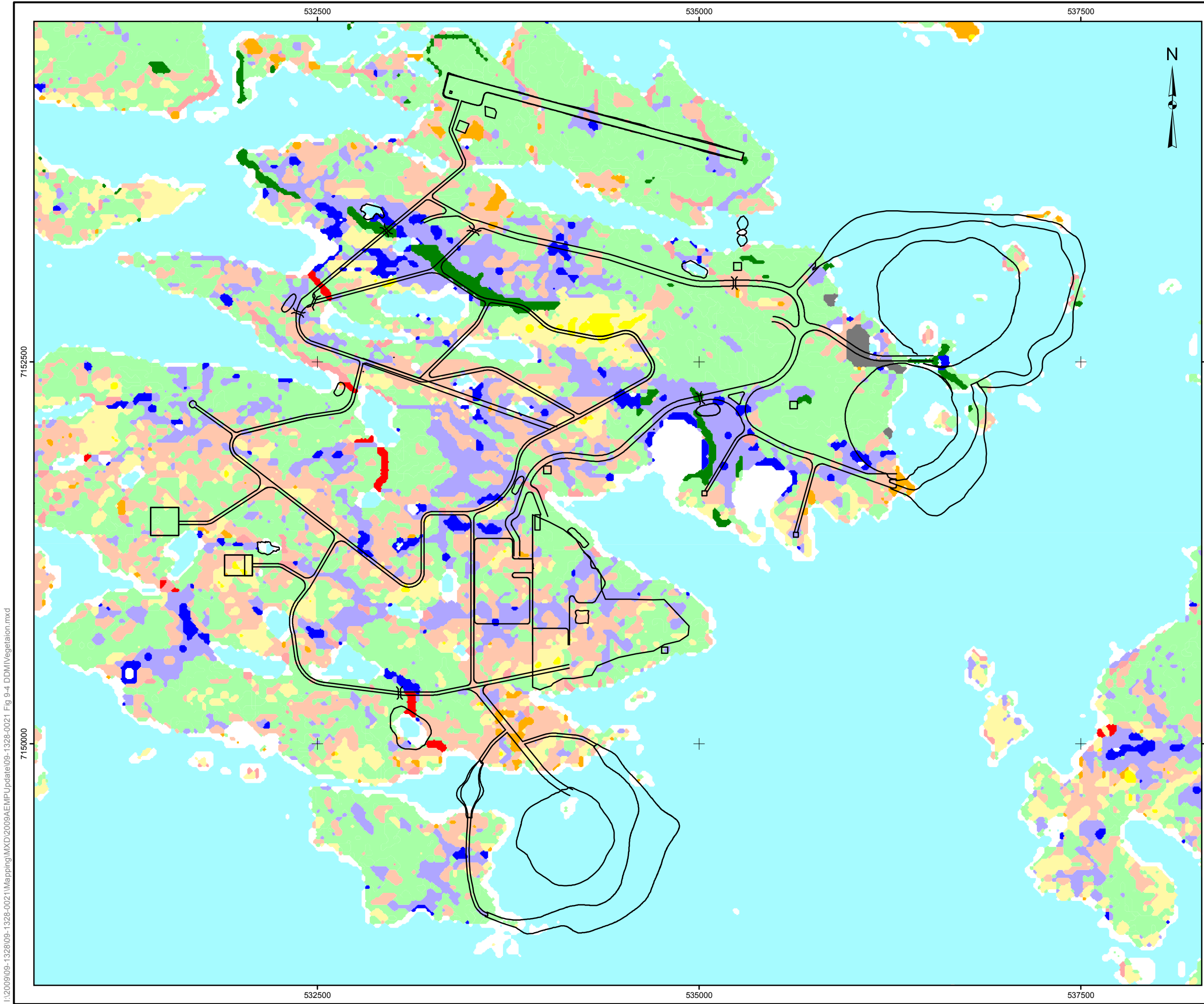


SCHEMATIC ONLY, NOT TO SCALE

**NOTES:**

1. AN EFFECT MAY BE CLASSIFIED FOR MORE THAN ONE STUDY AREA (E.G., A REGIONAL EFFECT MAY ALSO BE CLASSIFIED AS A LOCAL EFFECT).
2. EFFECT CLASSIFICATIONS ARE RANKED FROM I TO IV WITH LEVEL I BEING THE LOWEST EFFECT LEVEL AND LEVEL IV BEING THE HIGHEST EFFECT LEVEL.
3. ONLY ADVERSE EFFECTS ARE CLASSIFIED.

<b>PROJECT</b>					
<b>DIAVIK DIAMOND MINES NORTHWEST TERRITORIES</b>					
<b>TITLE</b>					
<b>EFFECTS CLASSIFICATION FLOW CHART</b>					
<b>DIAVIK</b> DIAMOND MINES INC.		PROJECT No. 09.1328.0021		FILE No. 0913280021C045	
		DESIGN	TD	04/11/09	SCALE N.T.S. REV. 0
		CADD	YW	24/11/09	<b>FIGURE 9-3</b>
		CHECK	TD	13/12/10	
		REVIEW	GM	13/12/10	

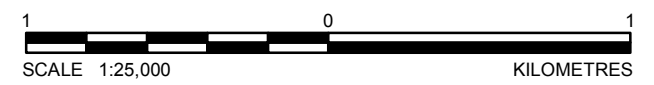


**LEGEND**

- DIAVIK FOOTPRINT
- LAND COVER CLASSIFICATION**
- HEATH TUNDRA
- HEATH TUNDRA 30-80% BEDROCK
- HEATH TUNDRA 30-80% BOULDERS
- TUSSOCK/HUMMOCK
- SEDGE WETLAND
- RIPARIAN TALL SHRUB
- BIRCH SEEP AND RIPARIAN SHORELINE SHRUB
- BOULDER COMPLEX (<80% ROCK)
- BEDROCK COMPLEX (<80% ROCK)
- SHALLOW WATER
- DEEP WATER
- HUMAN DISTURBANCE
- ESKER

**REFERENCE**

Projection: UTM Zone 12 Datum: NAD 83



<b>PROJECT</b>	DIAVIK DIAMOND MINES NORTHWEST TERRITORIES		
<b>TITLE</b>	<b>VEGETATION LAND COVER WITHIN THE LOCAL STUDY AREA AND MAXIMUM MINE OPERATION (YEAR 2018)</b>		
	PROJECT No. 09-1328-0021	SCALE AS SHOWN	REV. 0
	DESIGN TD 20 Nov. 2009		
	GIS CW 20 Nov. 2009		
	CHECK TD 24 Nov. 2009		
	REVIEW GM 24 Nov. 2009		



**FIGURE: 9-4**

I:\2009\09-1328\09-1328-0021\Mapping\MXD\2009AEMPUpdate\09-1328-0021\_Fig\_9-4\_DDMIVegetation.mxd