

Paramount Resources Ltd.
Hearing Presentation
February, 2004

Cameron Hills Extension Project
EA03-005



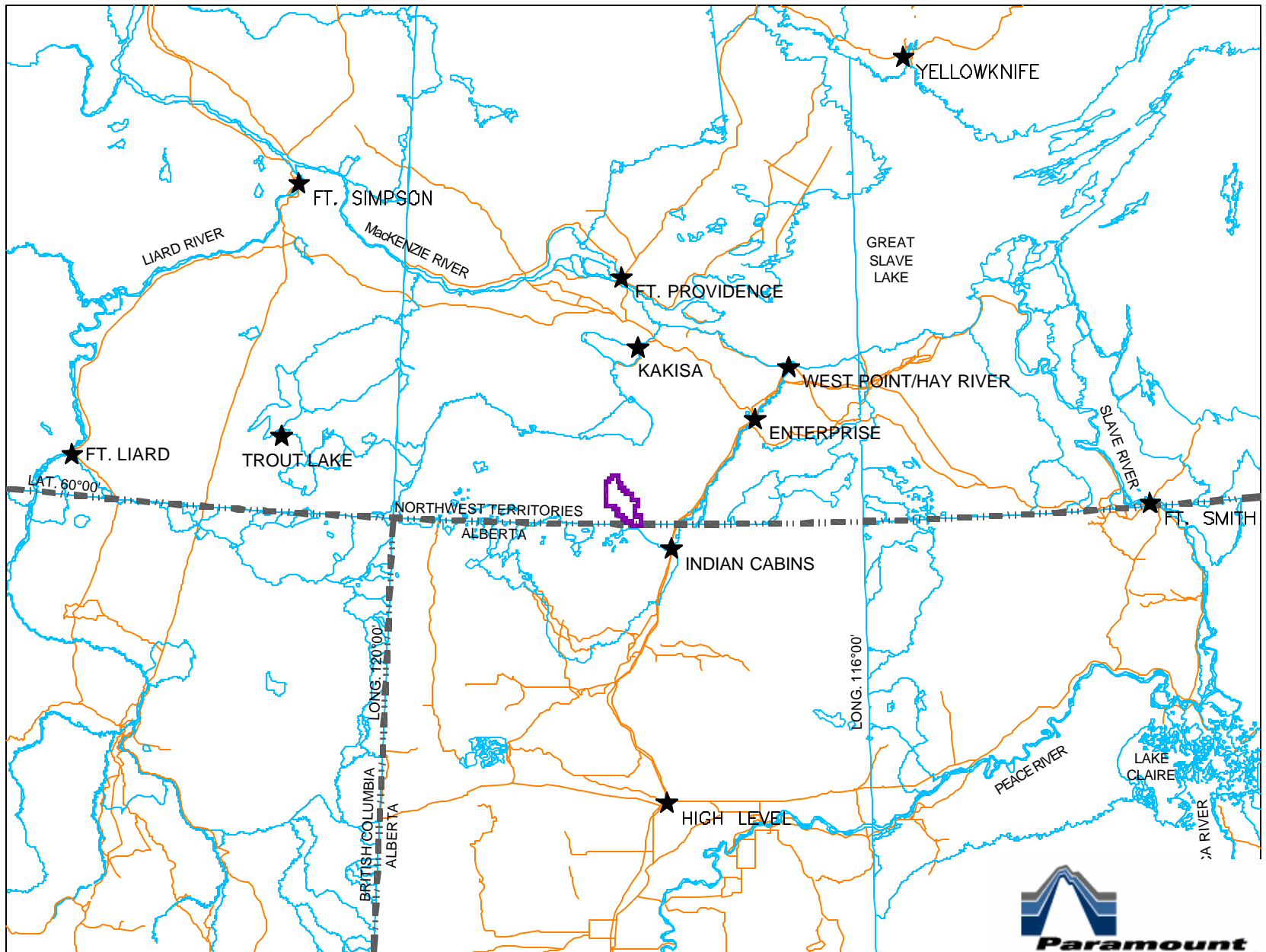
The Developer's Assessment Report

Overall Conclusion:

No Significant Effects are Predicted

Presentation Overview

- Project History
- Cumulative Effects Assessment Cases
- Conclusions



Project History

- 2 previous Environmental Assessments conducted for Paramount's Cameron Hills development
- 5 of the 9 wells applied for in 2002 were referred to Environmental Assessment based on possible cumulative effects and a potential for public concern

MVEIRB Terms of Reference

Scope of Assessment

“... the Review Board has already established that the individual components of the development under assessment (i.e., drilling, testing and tie in of oil and gas wells) generally are not likely to have a significant adverse effect, if considered in isolation.”

MVEIRB Terms of Reference

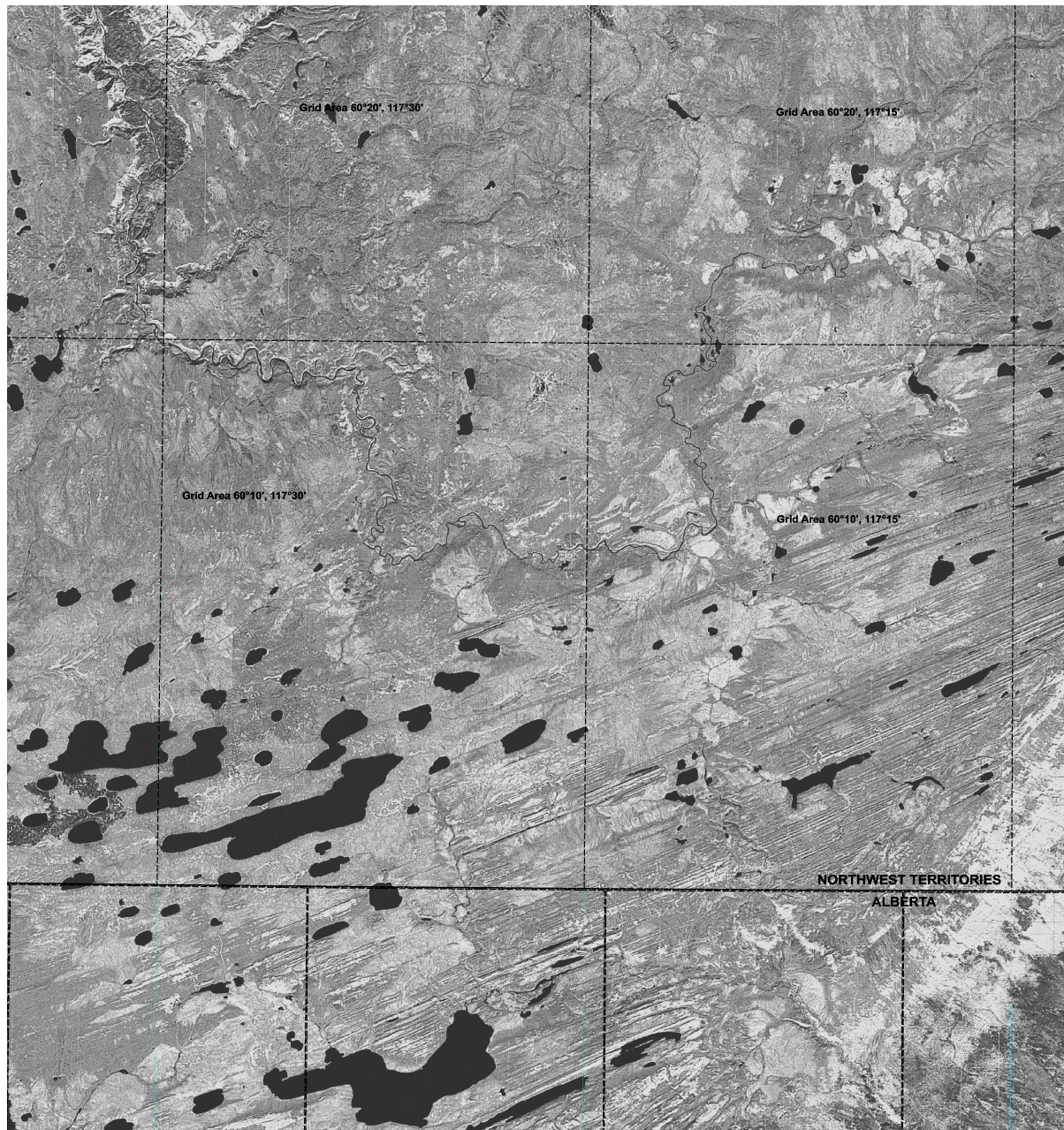
Scope of Assessment (cont'd)

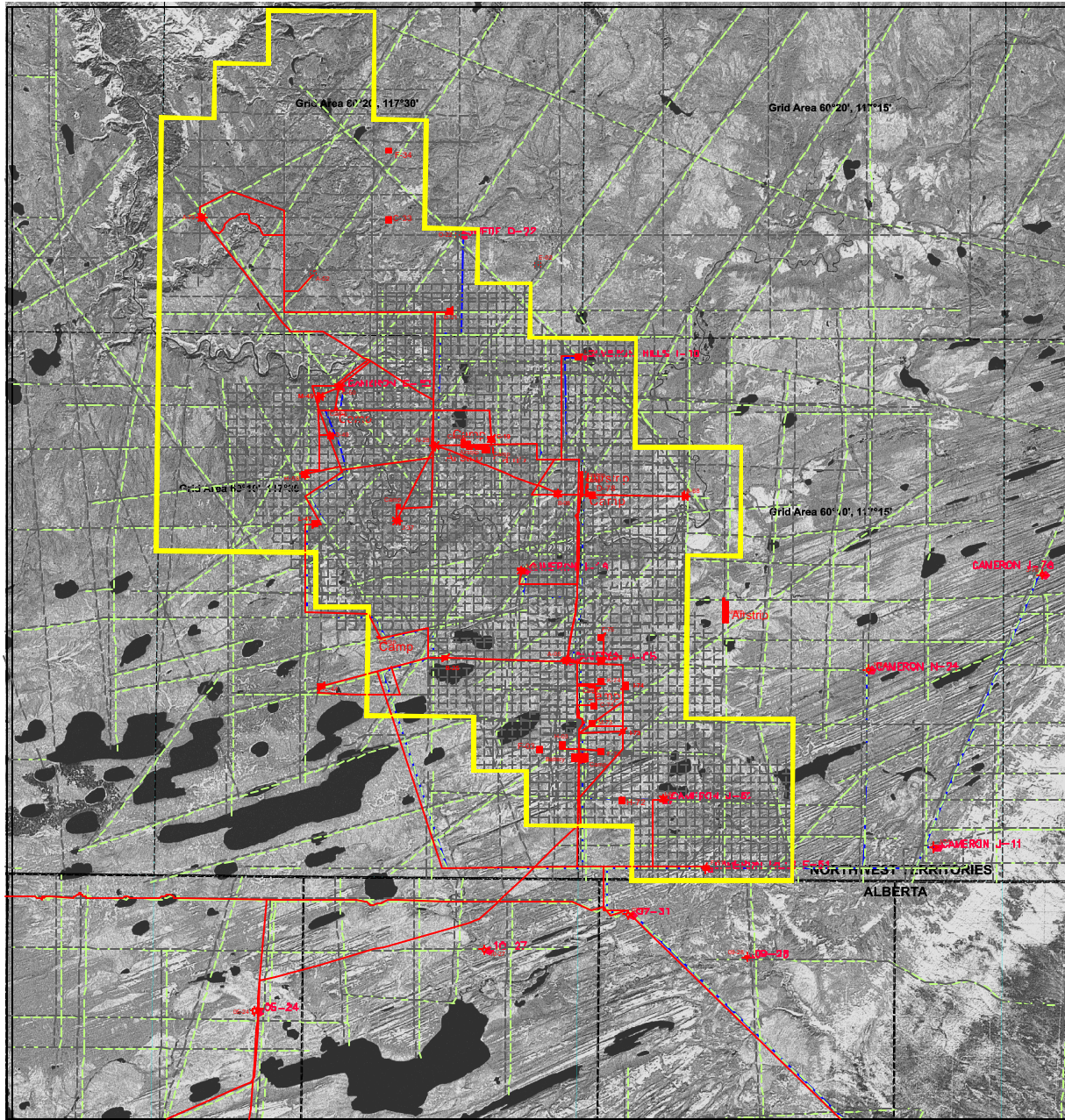
“...The Review Board defines cumulative effects as the effects of the proposed development in combination with effects from past, present or reasonably foreseeable developments.”

Cumulative Effects Assessment Cases

1. Environmental Setting *(no development)*
2. Baseline *(existing and approved)*
3. Application *(5 wells – this EA)*
4. Planned Development *(incremental 48 wells)*

Environmental Setting

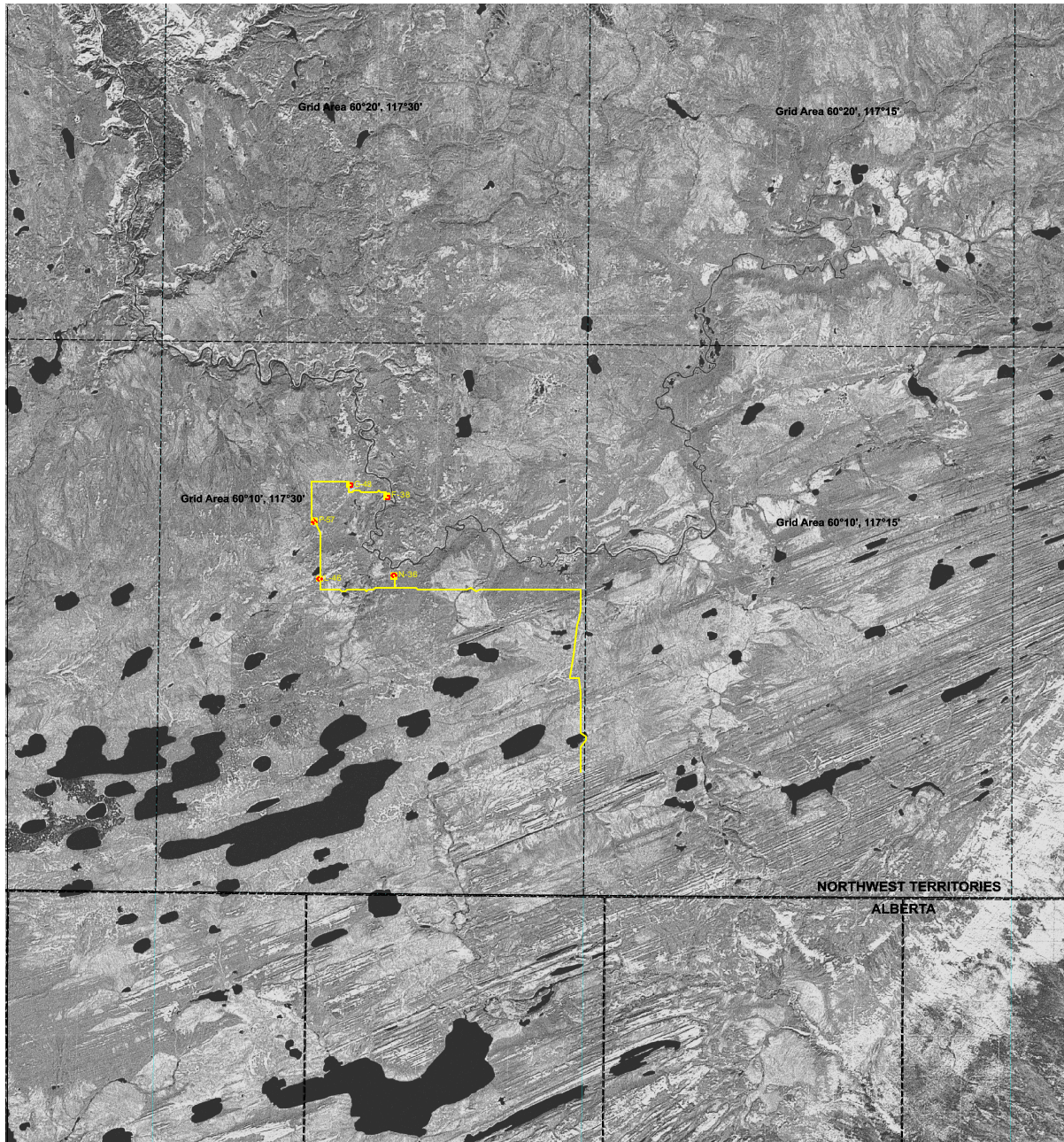




Baseline Case

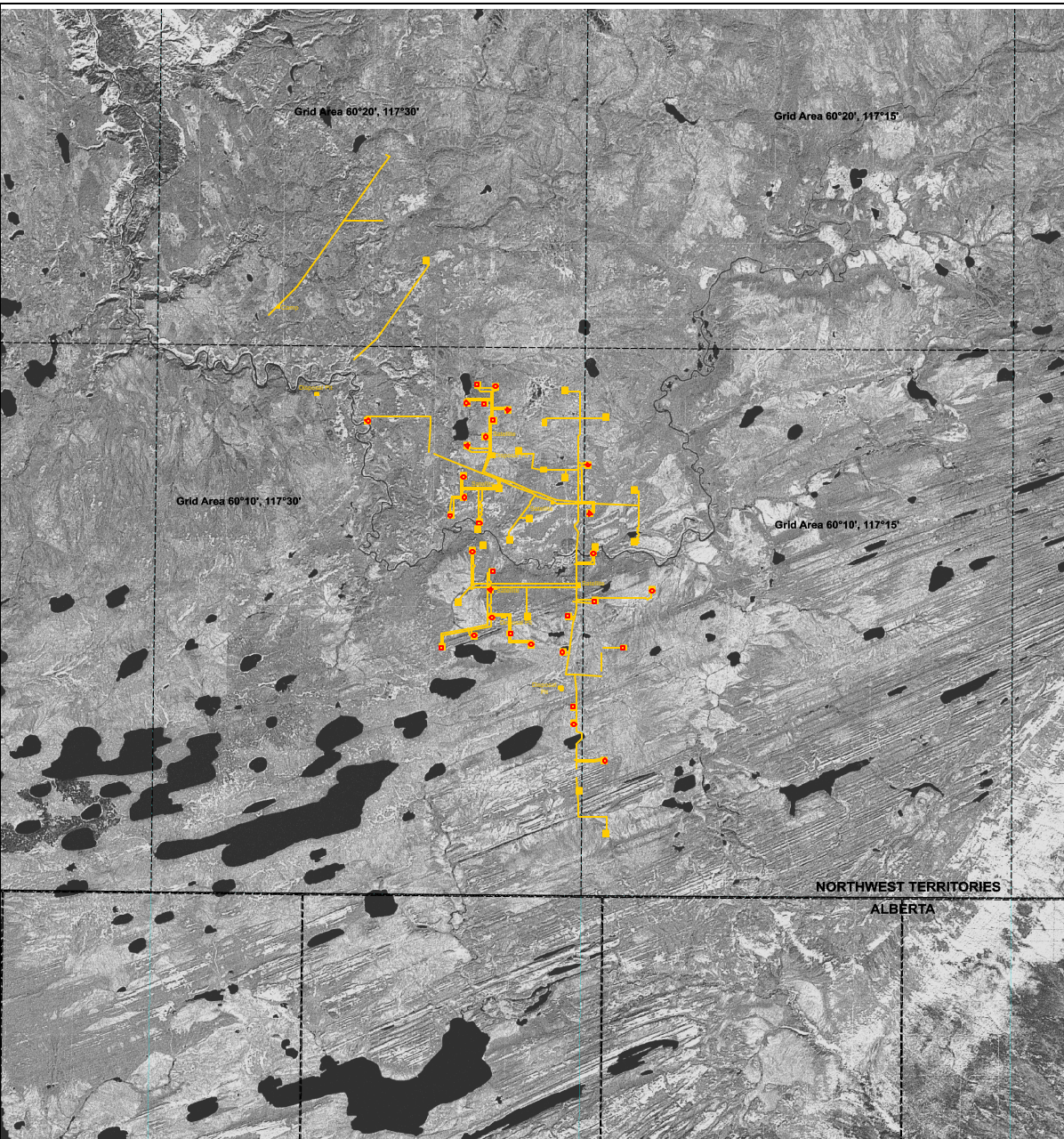
Pre-1987
(SDL)

Post-1987
(Paramount)



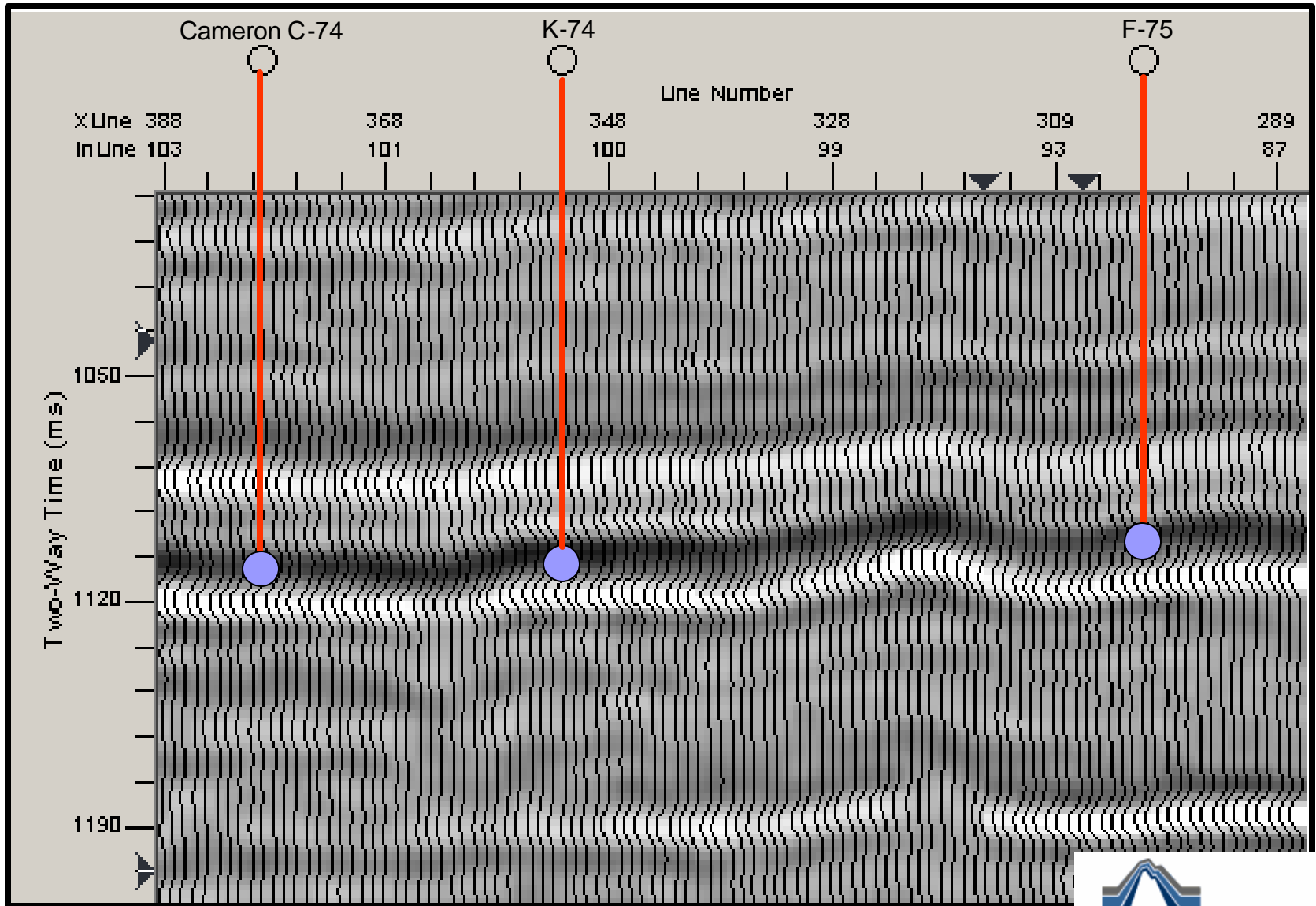
Application Case

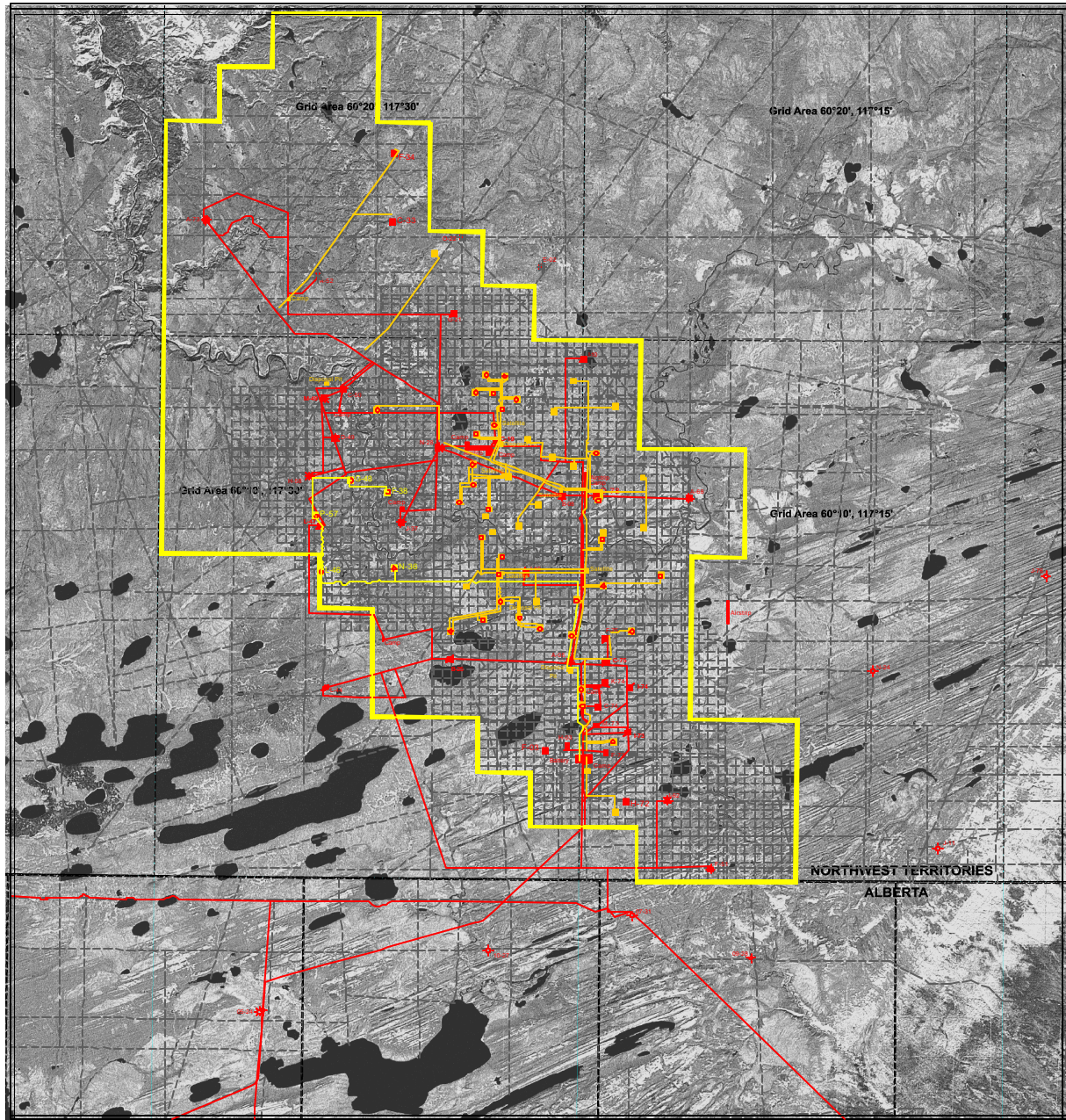
5 Wells, Pipeline and Access



Planned Development Case

48 Incremental
Wells and
Infrastructure



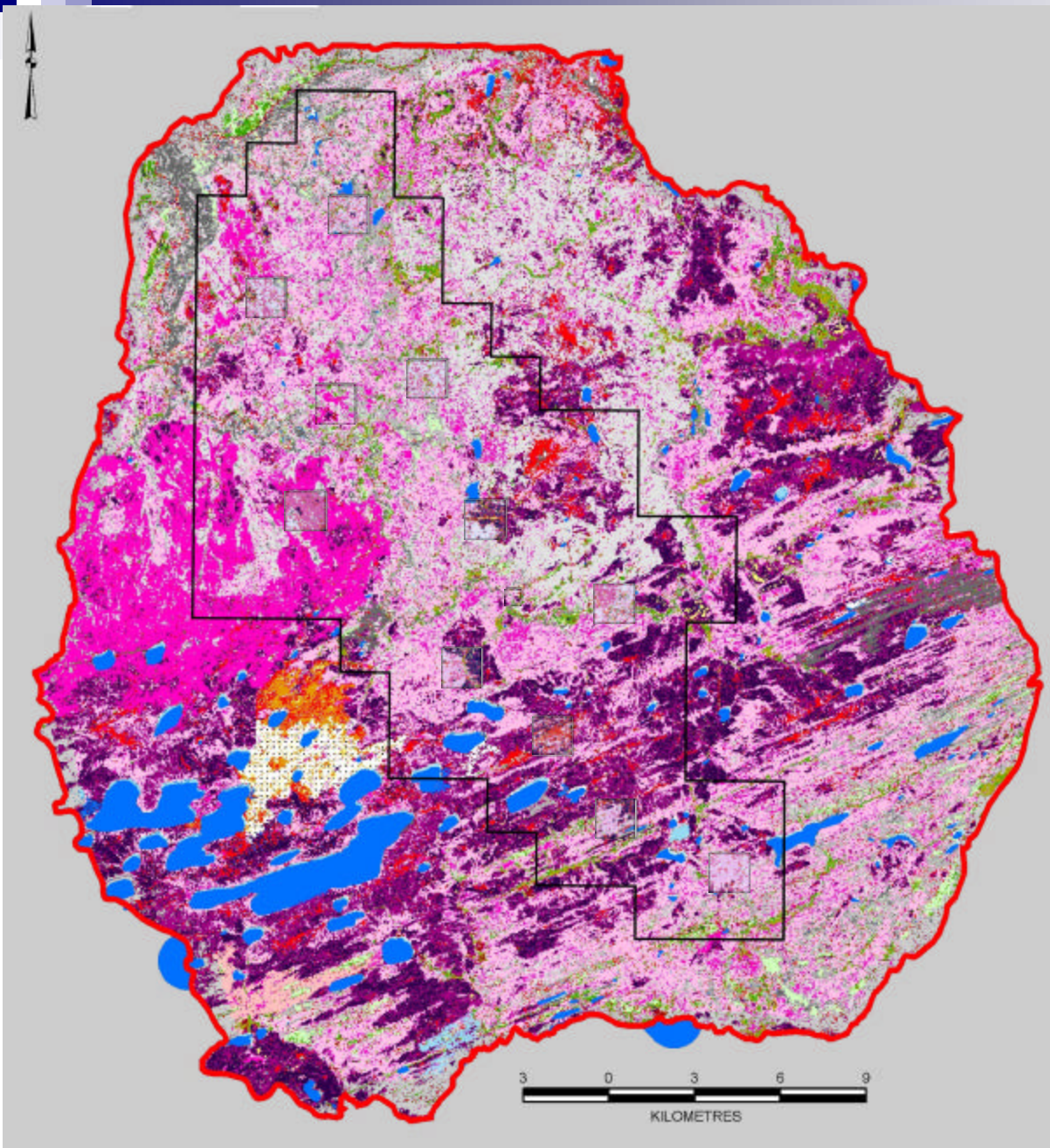


**Environmental
Setting**

Baseline Case

Application Case

**Planned
Development
Case**



Baseline – 2.0%TSA
(1,918 ha)

Application – 2.0%TSA
(1,946 ha)

Planned – 2.2%TSA
(2,093 ha)

Air Assessment

- Sulphur Dioxide (SO₂) – negligible to low
- Nitrogen Dioxide (NO₂) – negligible to low
- Hydrogen Sulphide (H₂S) – negligible
- Particulates – negligible
- Acid Deposition – low

Aquatic Assessment

- ❑ Surface water – negligible
- ❑ Groundwater – negligible
- ❑ Fish/Fish Habitat – negligible

Terrestrial



- ❑ Soils/Terrain – negligible to low
- ❑ Vegetation – negligible to low
- ❑ Wildlife – negligible to moderate

Cultural Assessment

Heritage Resources – negligible to low

Traditional Harvesting – negligible

Aesthetics – low



Socio-Economics

Positive effects –
low to high

Negative effects –
negligible to low



The Developer's Assessment Report – Environmental Consequences

- Air – negligible to low
- Aquatics – negligible
- Terrestrial – negligible to moderate
- Cultural – negligible to low
- Socio-Economics – negligible to low (negative)
negligible to high (positive)

Overall Conclusion:

No Significant Effects are Predicted

Sustainable Development

Paramount is committed to work with stakeholders in the pursuit of Sustainable Development

