



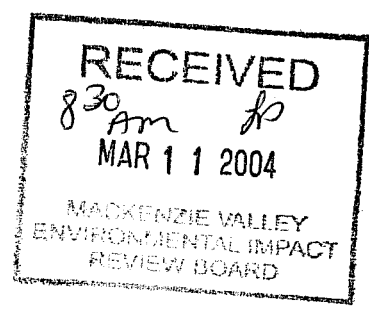
Imperial Oil Resources Ventures Limited
237 Fourth Avenue South West
P.O. Box 2480, Station "M"
Calgary, Alberta
Canada, T2P 3M9

P.D. (Peter) Grout
Manager, Regulatory Affairs
Mackenzie Gas Project

Tel. 403 237 3984
Fax. 403 237 2102

Facsimile Transmission Cover Sheet

Date: March 10, 2004



To Martin Haefele

From Peter Grout

Company: MVEIRB
City:
Telephone:
Fax: 867-766-7074

Imperial Oil Resources Ventures Limited

237-3984
237-2102

Number of pages sent including this one: 13

Message:

Dear Mr. Haefele,

On behalf of Peter Grout, attached please find the presentation that we will be using to discuss the Mackenzie Gas Project. Please note that there may be some minor edits prior to the hearing.

We would appreciate that the presentation not be released until the hearings proceed.

Sincerely,

Sandy Boell
Administrative Assistant - Regulatory Affairs

An Alberta limited partnership

NOTICE: If you have received this facsimile in error, any personal use, copying or dissemination of its contents is prohibited. Please notify the sender immediately by telephone at the number indicated on this page to arrange return of the facsimile to the sender. Thank you for your co-operation.

36



Imperial Oil



ConocoPhillips

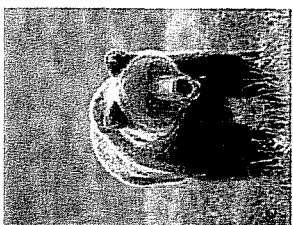


Shell Canada

ExxonMobil

Mackenzie Gas Project

Project Overview

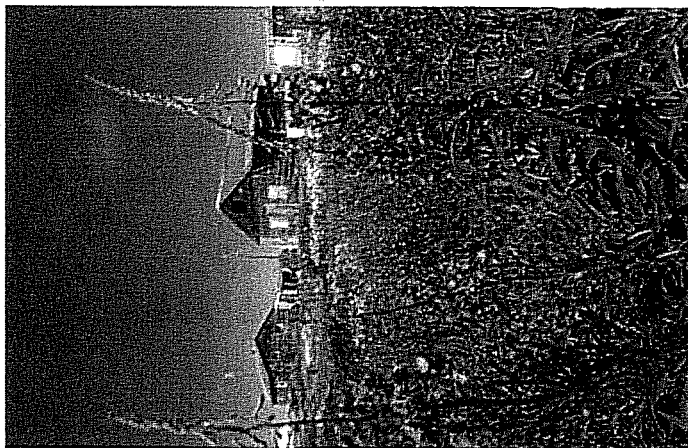
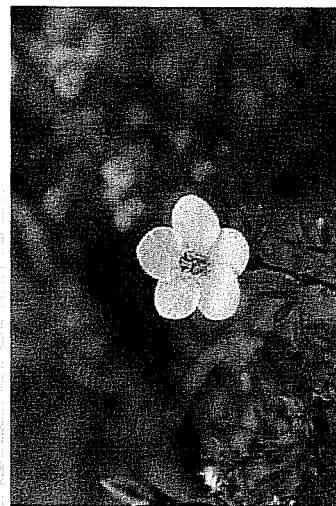


Public Hearing

Mackenzie Valley Environmental Impact Review Board

Norman Wells, NWT

March 16-18, 2004

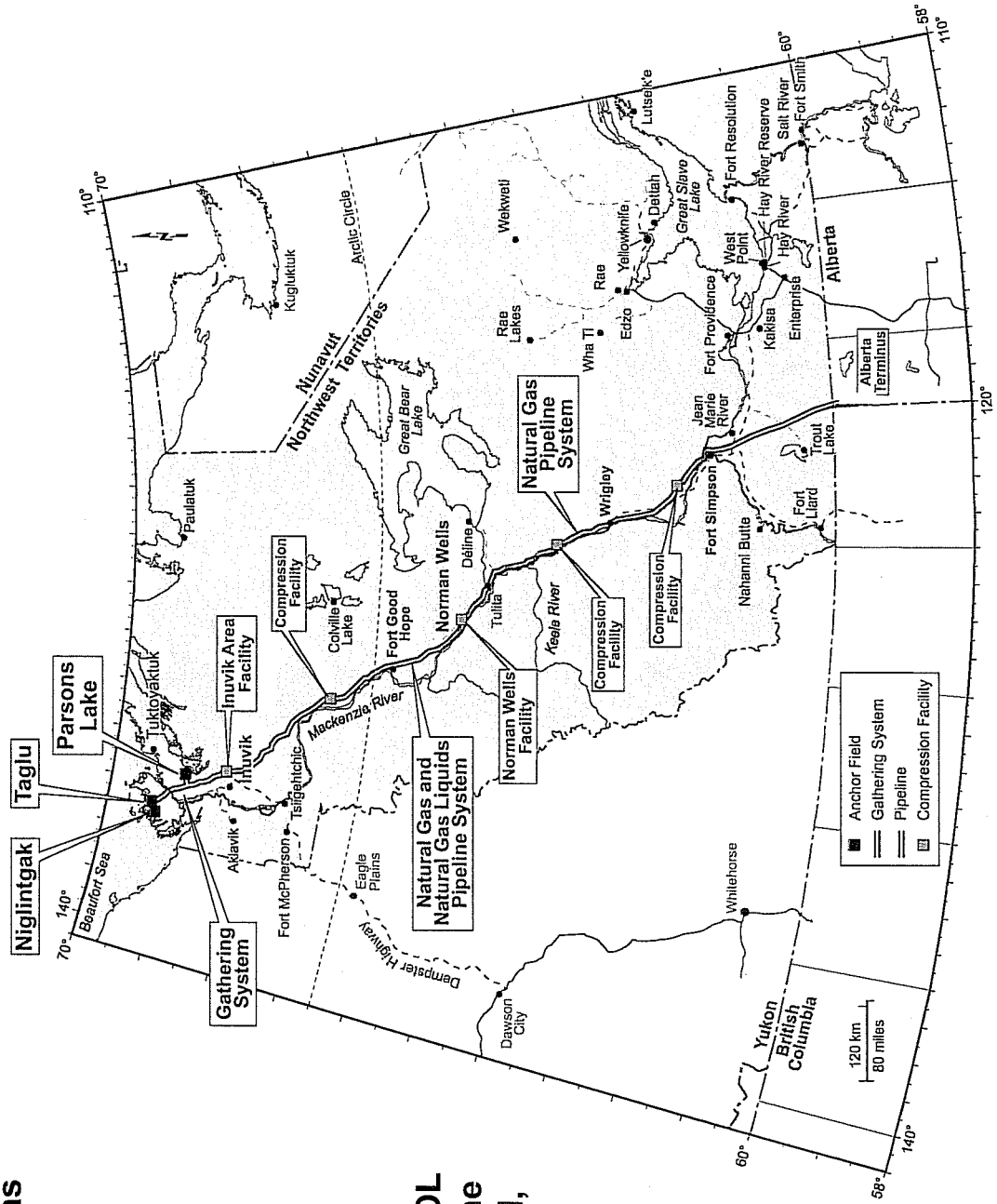


Mackenzie Gas Project - Presentation Outline

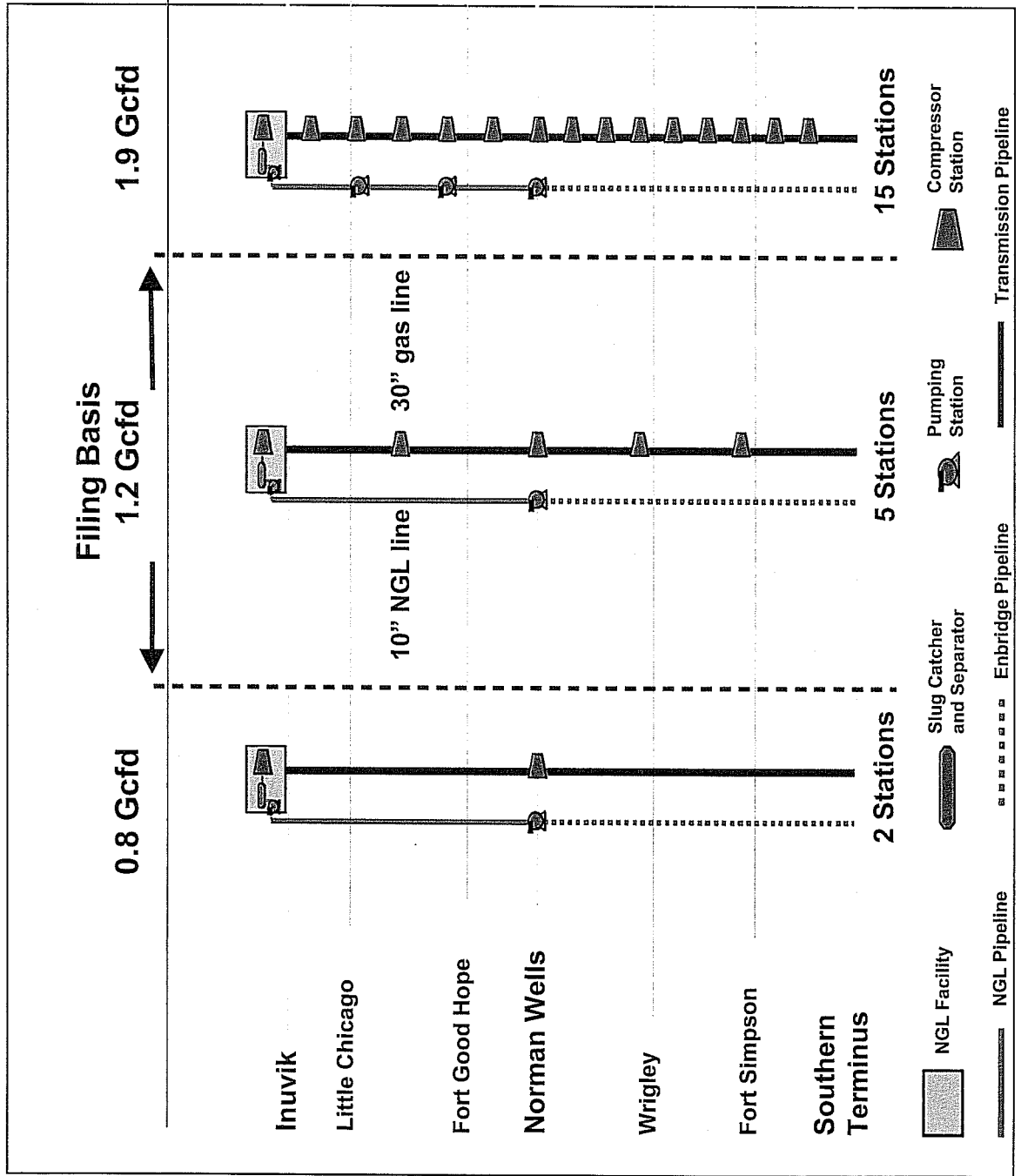
- **Introduction**
- **Project Overview**
- **Sahtu Region**
- **Impact Assessment Topics
and Issues of Public Concern**

Mackenzie Gas Project - Overview

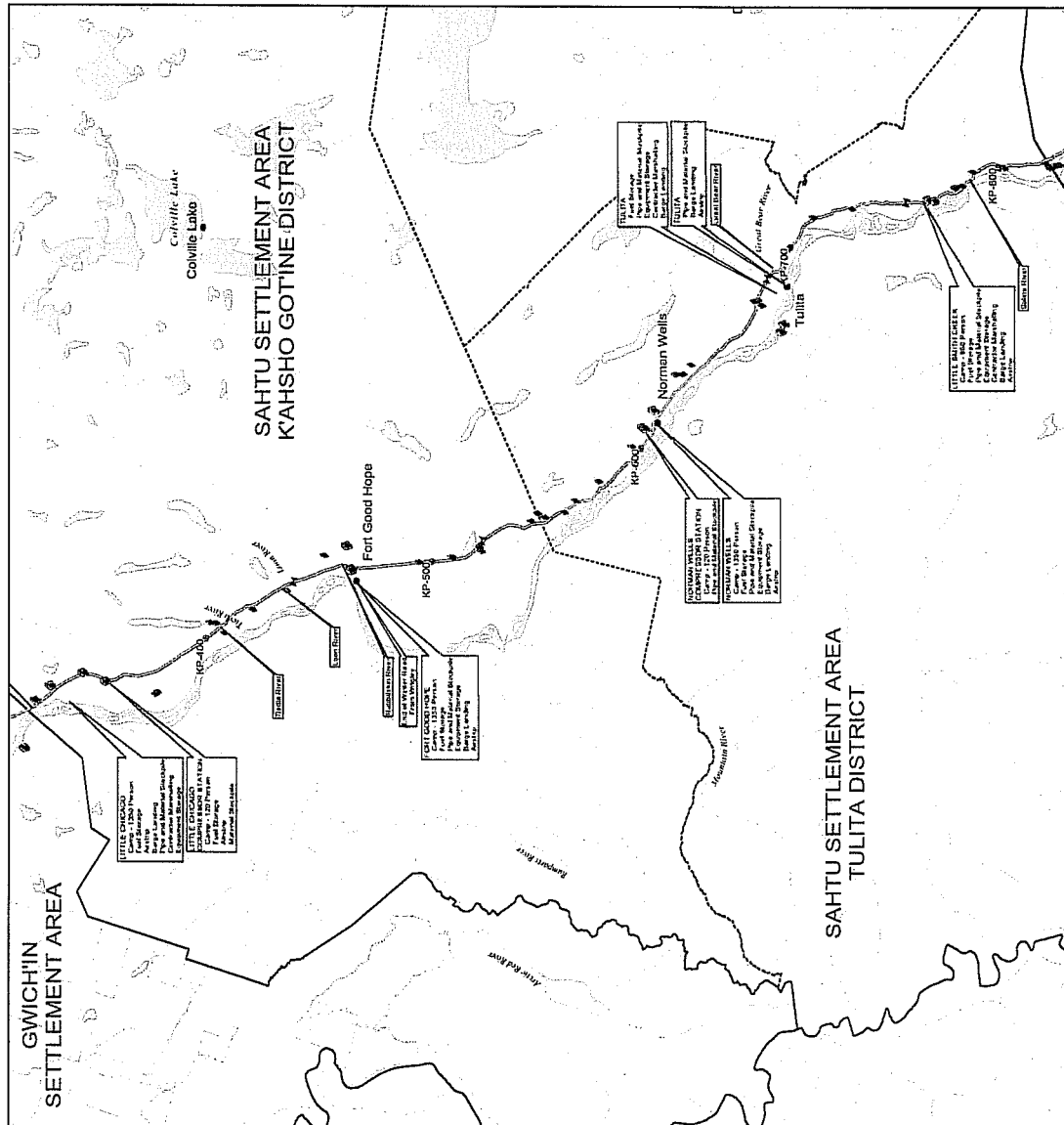
- Canadian onshore natural gas
- Three anchor fields
 - Taglu
 - Parsons Lake
 - Niglintgak
- Gas gathering and NGL pipelines: IOL (operator), ConocoPhillips, Shell, EMC
- Mackenzie Valley Pipeline: IOL (operator), Aboriginal Pipeline Group, ConocoPhillips, Shell, EMC
- Proven technology
- Mitigate project impacts
- Open access pipeline
- Utilizes available capacity in existing pipelines
 - + Liquids to Enbridge
 - + Gas to TCPL



Mackenzie Valley Pipeline Flexibility



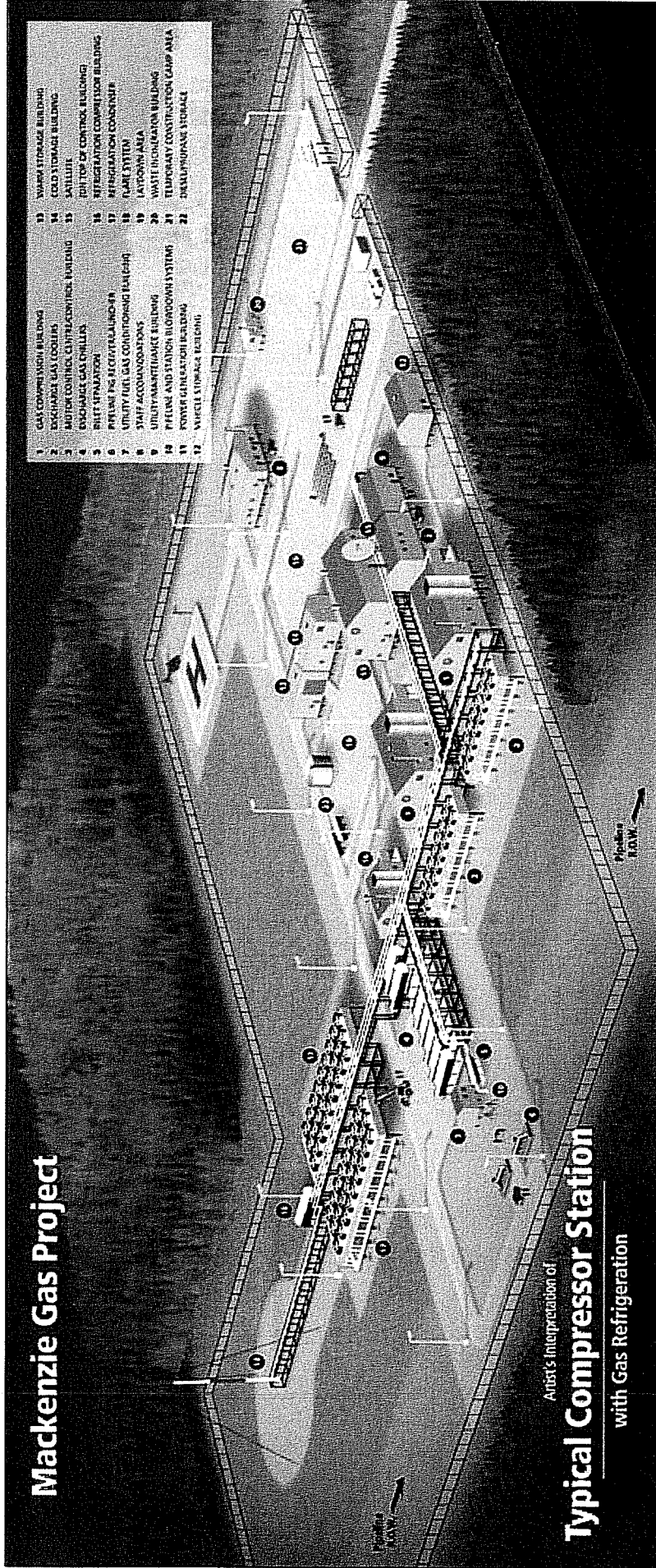
Sahtu Area Infrastructure



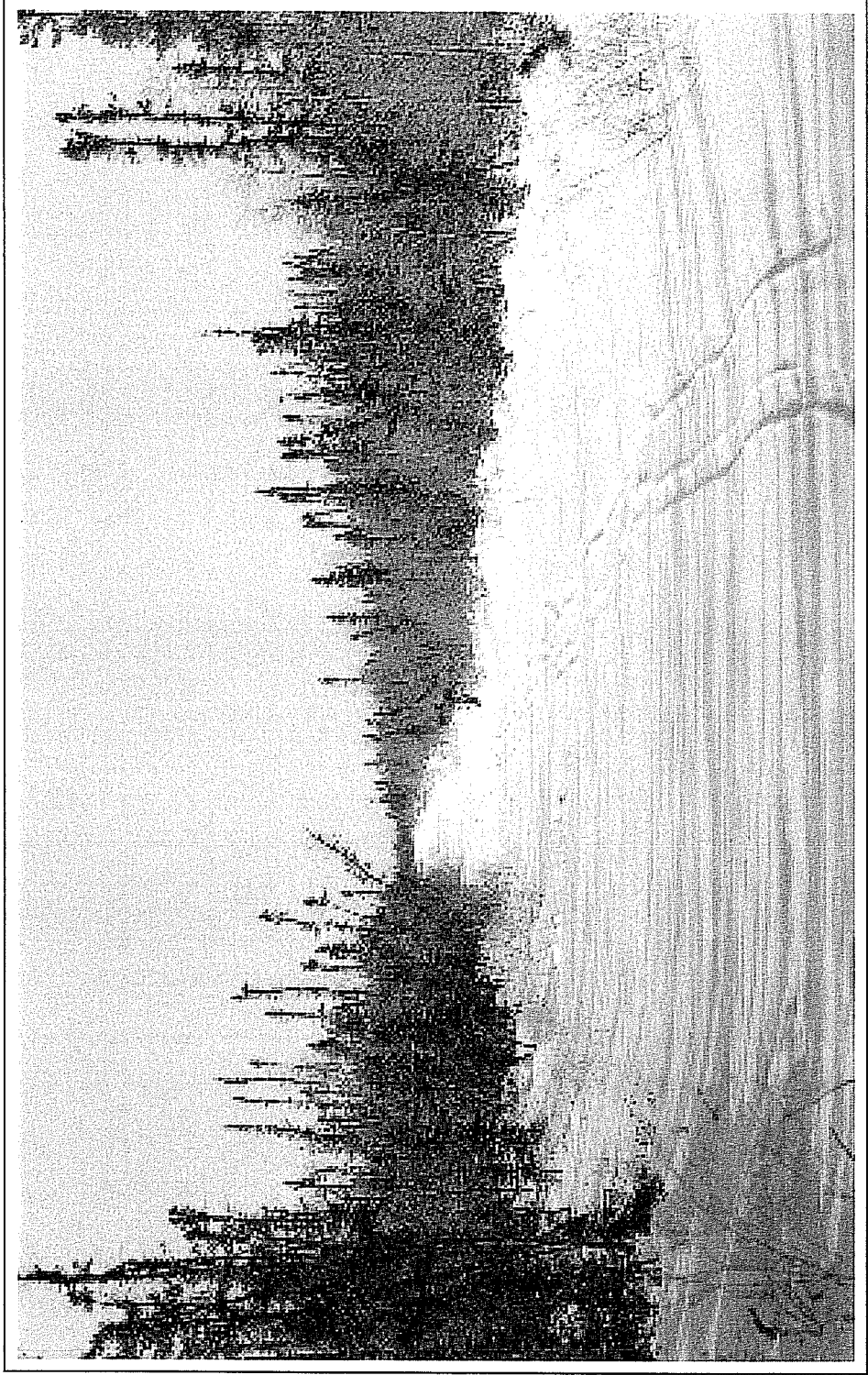
- ◆ Borrow Source
- ▼ Block Valve

Mackenzie Gas Project

Mackenzie Gas Project Typical Compressor Station



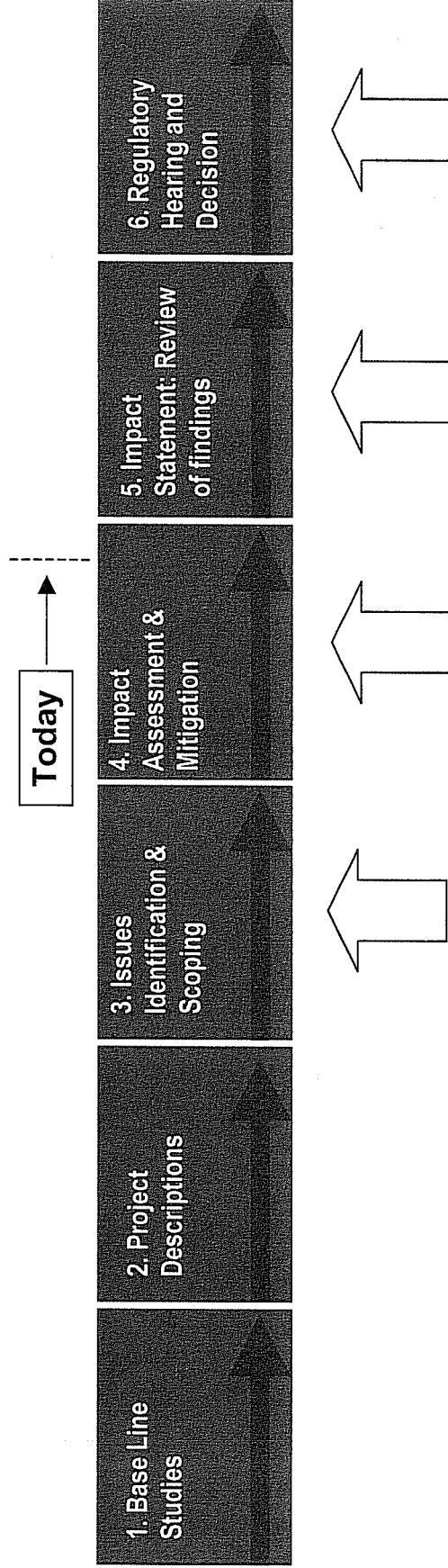
Pipeline Right of Way



Communications and Consultation

- **Established northern offices and staff, including community representative**
- **Communicating and consulting on many topics, using a variety of mechanisms**
 - **In person:**
 - + **open houses**
 - + **workshops**
 - + **door-to-door visits**
 - + **pipeline construction visit**
 - **Media:**
 - + **brochures**
 - + **newspaper inserts**
 - + **news releases**
 - + **Internet website**
 - + **local radio stations**

Environmental Impact Statement Process



COMMUNITY PARTICIPATION

- Sources of information
 - Published Data
 - Field Studies
 - Traditional Knowledge
 - Consultation with communities, governments and other parties

Socio-Economic Impact Assessment

- Socio-economic issues in PIP include:

- Economic impact; size and distribution
- Employment opportunities
- Education and training
- Governance
- Community infrastructure
- Community and family wellness
- Traditional culture
- Heritage resources
- Land and Resource Use

Examples of concerns identified at the Sahtu Regional Workshop:

- Conflict between proposed location of construction infrastructure with community land use
- How to acquire training and employment
- Ability of northern companies to obtain contracts with the project
- Interaction between communities and construction camps
- Use of community infrastructure and utilities by project
- Increased use of drugs and alcohol
- Impact on families by increased alcohol consumption

Environmental Impact Assessment

- Biophysical issues in PIP include:
 - Air quality and climate
 - Noise
 - Permafrost and soil stability
 - Fish and fish habitat
 - Water quality and hydrology
 - Wildlife habitat, populations, migration patterns
 - Vegetation
- Examples of concerns identified at the Sahtu Regional Workshop:
 - Noise impact on wildlife
 - Degradation of permafrost
 - Negative impact on fish habitat
 - Change in migration of caribou
 - Degradation of muskeg due to heavy equipment traffic
 - Need for long-term environmental monitoring

Mackenzie Gas Project - Phases

