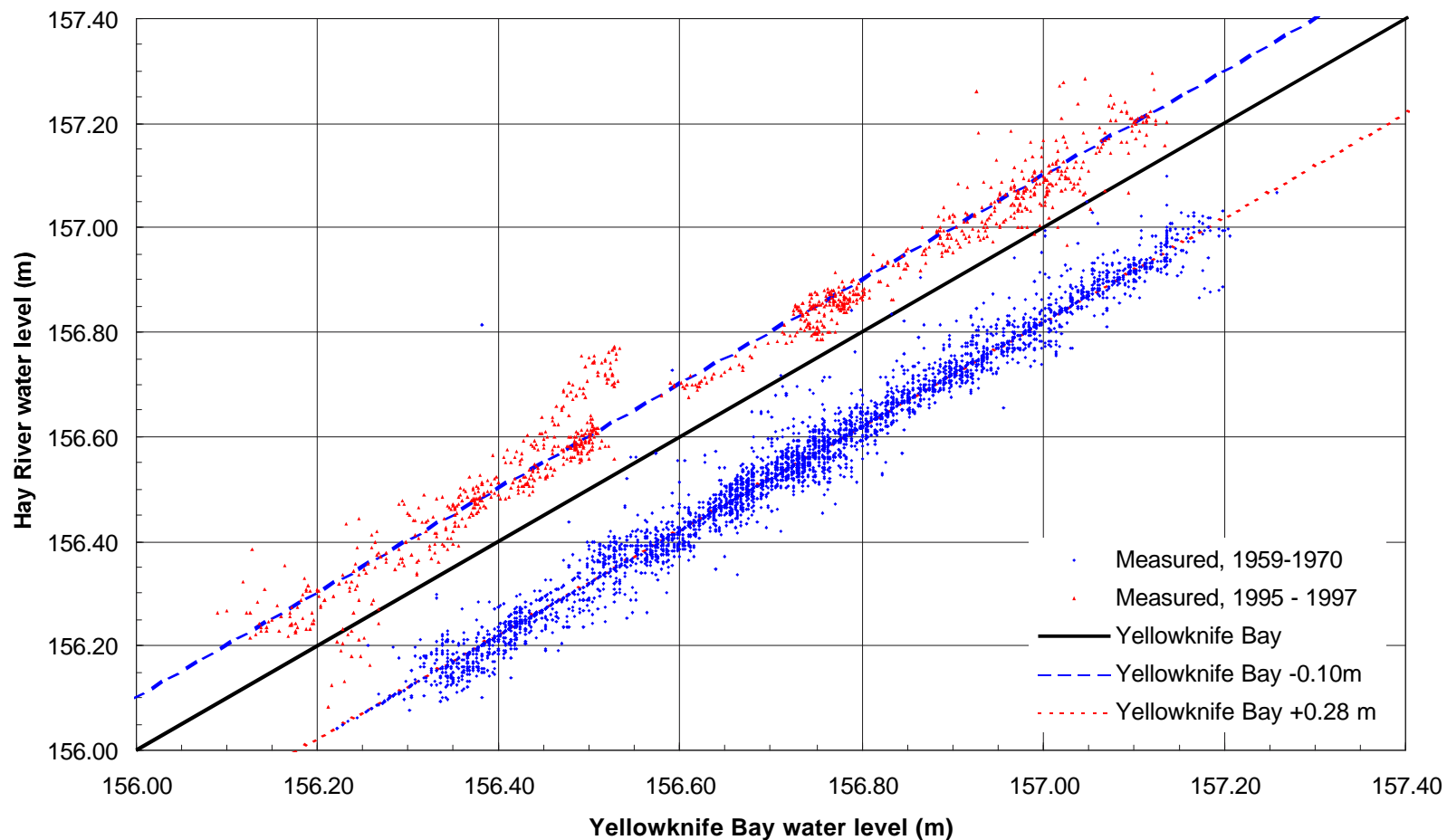


**Engineering and
Hydrographics Inc.**

210, 4812 - 87 Street
Edmonton, Alberta
Canada T6E 5W3

Phone: 780.496.7671
Fax: 780.463.7185
Trillium@trilliumeng.ab.ca

CLIENT			JIVKO ENGINEERING LTD.		
PROJECT			MACKENZIE RIVER BRIDGE AT FORT PROVIDENCE		
GREAT SLAVE LAKE WATER LEVELS AT HAY RIVER AND YELLOWKNIFE BAY, 1989					
PROJECT NUMBER		DATE		FIGURE	
02-519		OCT. 29, 2002		2.1	

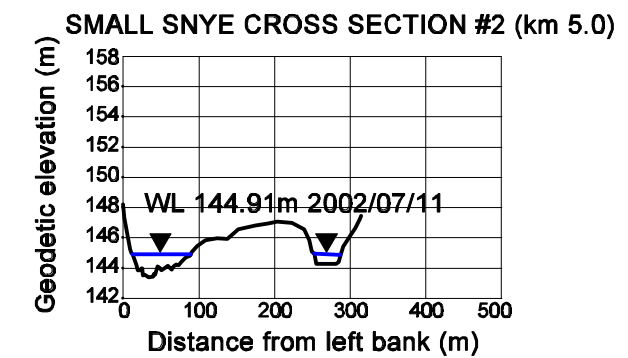
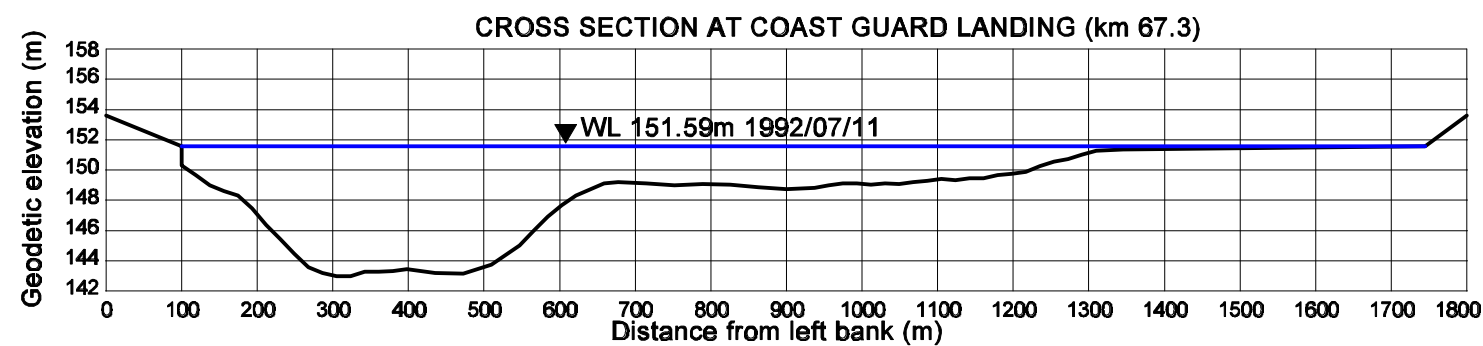
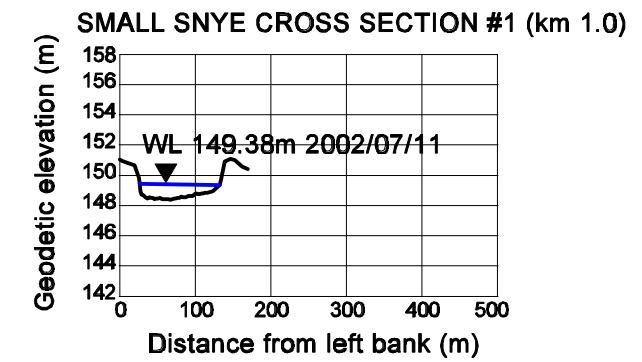
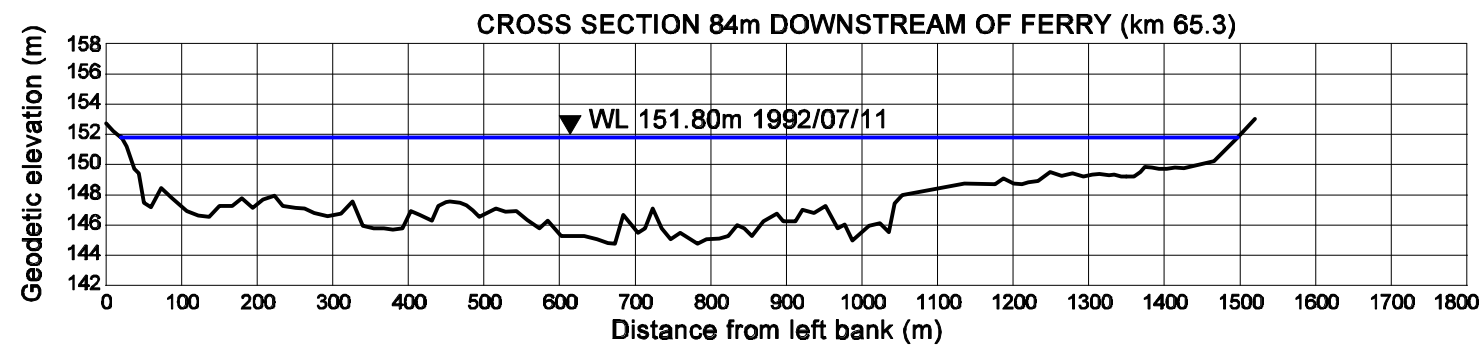
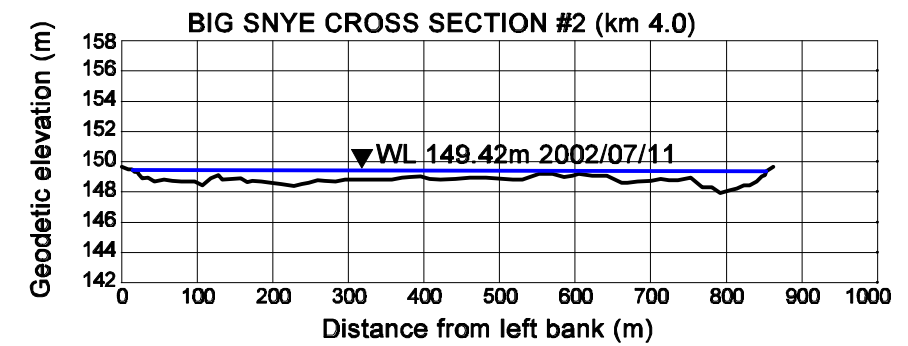
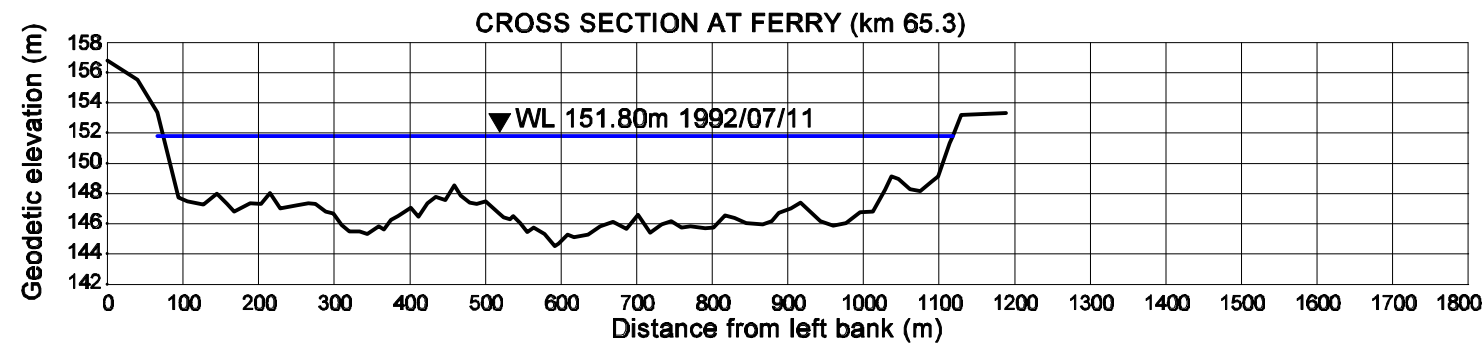
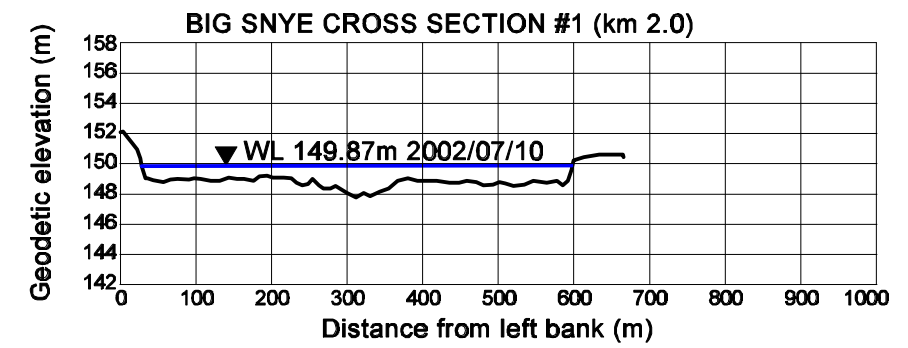
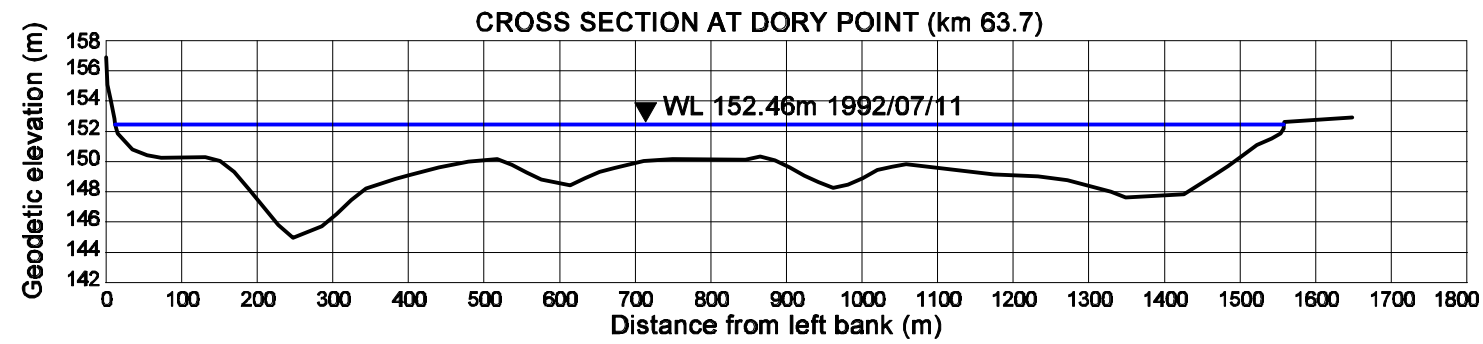


**Engineering and
Hydrographics Inc.**

210, 4812 - 87 Street
Edmonton, Alberta
Canada T6E 5W3

Phone: 780.496.7671
Fax: 780.463.7185
Trillium@trilliumeng.ab.ca

CLIENT			JIVKO ENGINEERING LTD.		
PROJECT			MACKENZIE RIVER BRIDGE AT FORT PROVIDENCE		
COMPARISON OF GREAT SLAVE LAKE WATER LEVELS AT HAY RIVER AND YELLOWKNIFE BAY					
PROJECT NUMBER		DATE		FIGURE	
02-519		OCT. 29, 2002		2.2	

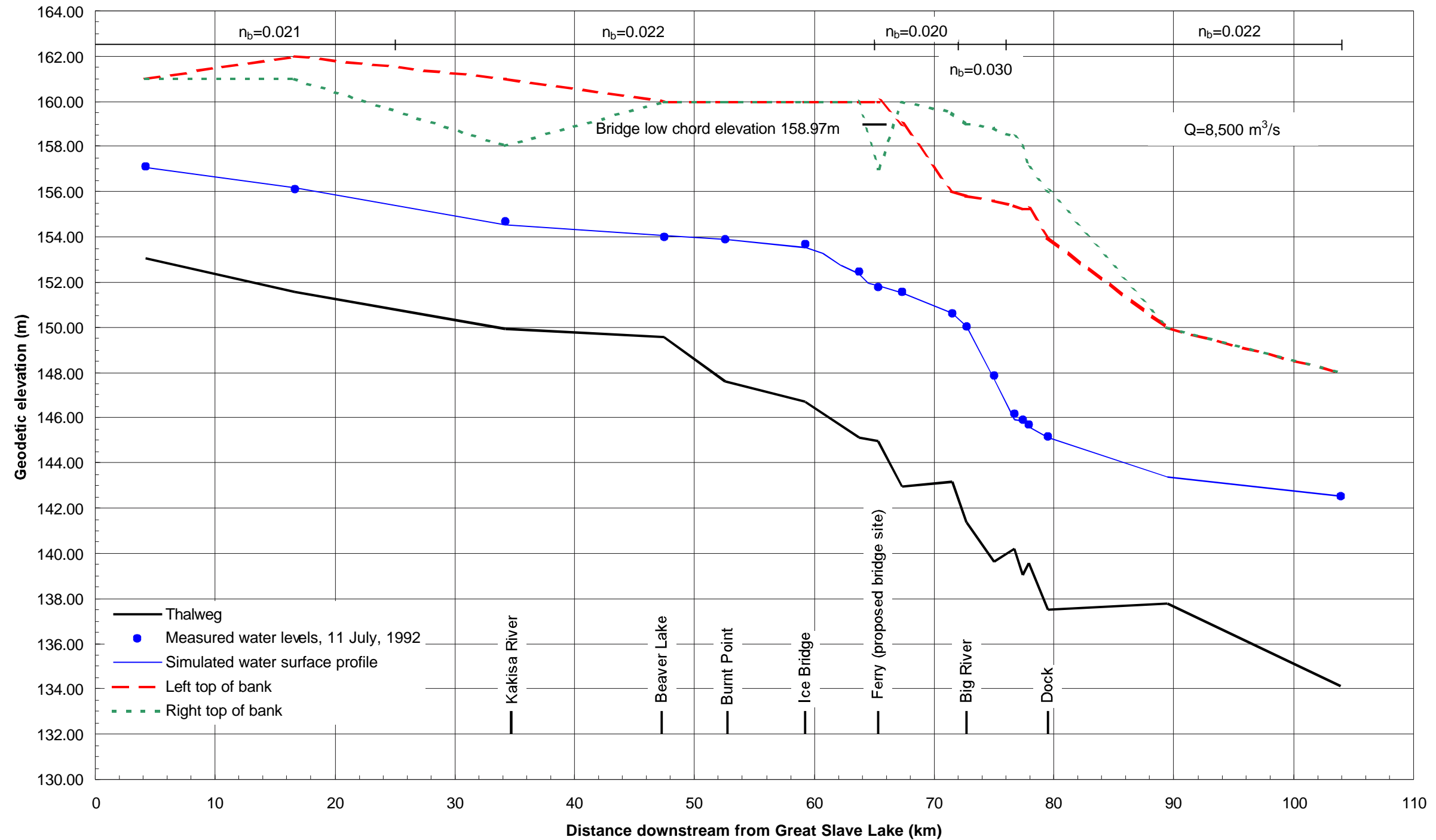


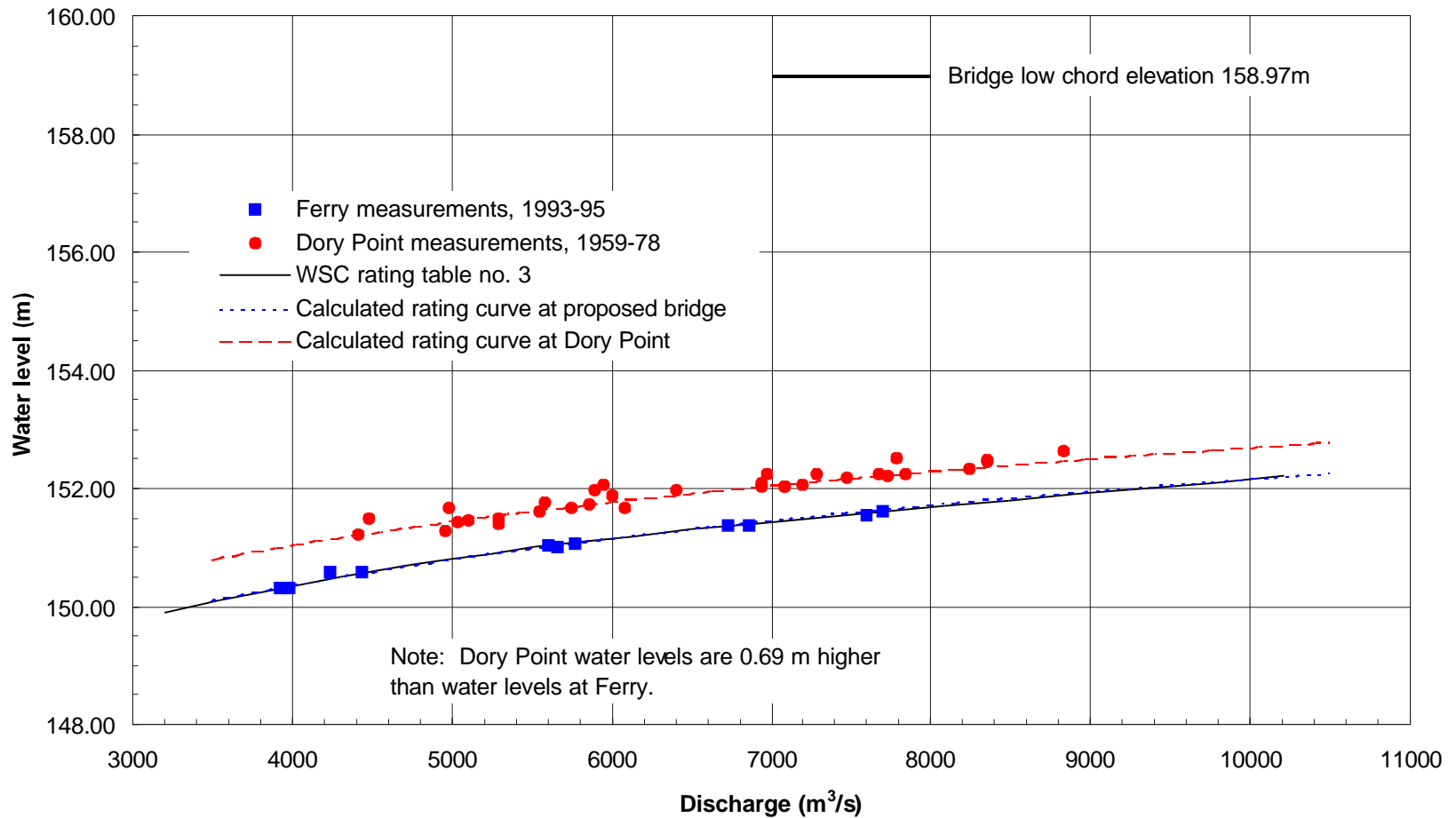
210, 4812-87 Street
Edmonton, Alberta
Canada T6E 5W3

Phone: 780.496.7671
Fax: 780.463.7185
trillium@trilliumeng.ab.ca

SCALE: H: 1:10,000
V: 1:500

CLIENT	JIVKO ENGINEERING LTD.	
PROJECT	MACKENZIE RIVER AT FORT PROVIDENCE FERRY CROSSING	
CROSS SECTIONS IN FERRY REACH AND Snye CHANNELS		
TRILLIUM FILE	DATE	FIGURE
02-598-523	Nov. 12, 2002	2.3



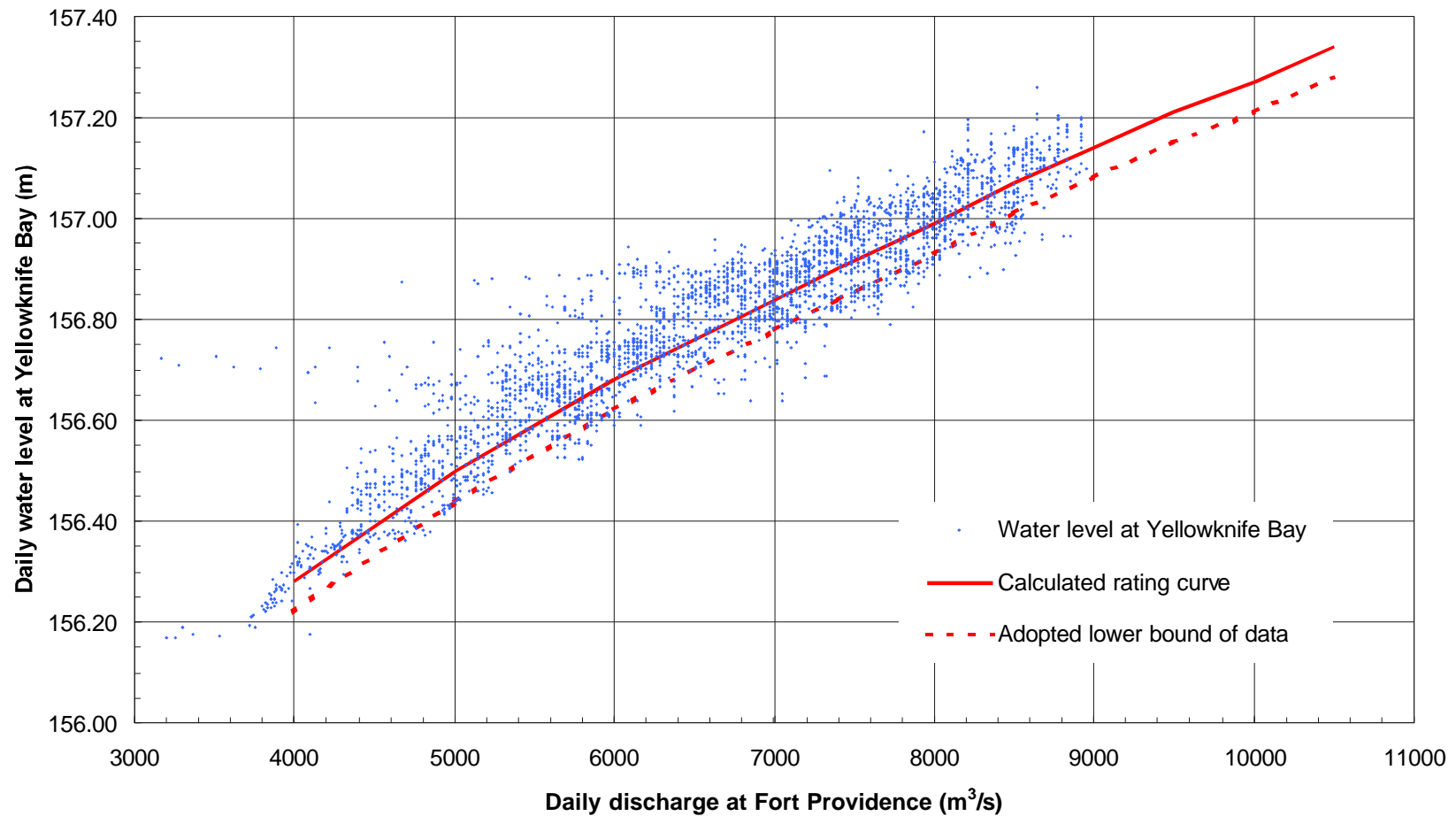


Engineering and
Hydrographics Inc.

210, 4812 - 87 Street
Edmonton, Alberta
Canada T6E 5W3

Phone: 780.496.7671
Fax: 780.463.7185
Trillium@trilliumeng.ab.ca

CLIENT			JIVKO ENGINEERING LTD.		
PROJECT			MACKENZIE RIVER BRIDGE AT FORT PROVIDENCE		
DISCHARGE RATING CURVES AT DORY POINT AND PROPOSED BRIDGE					
PROJECT NUMBER		DATE		FIGURE	
02-519		OCT. 29, 2002		2.5	

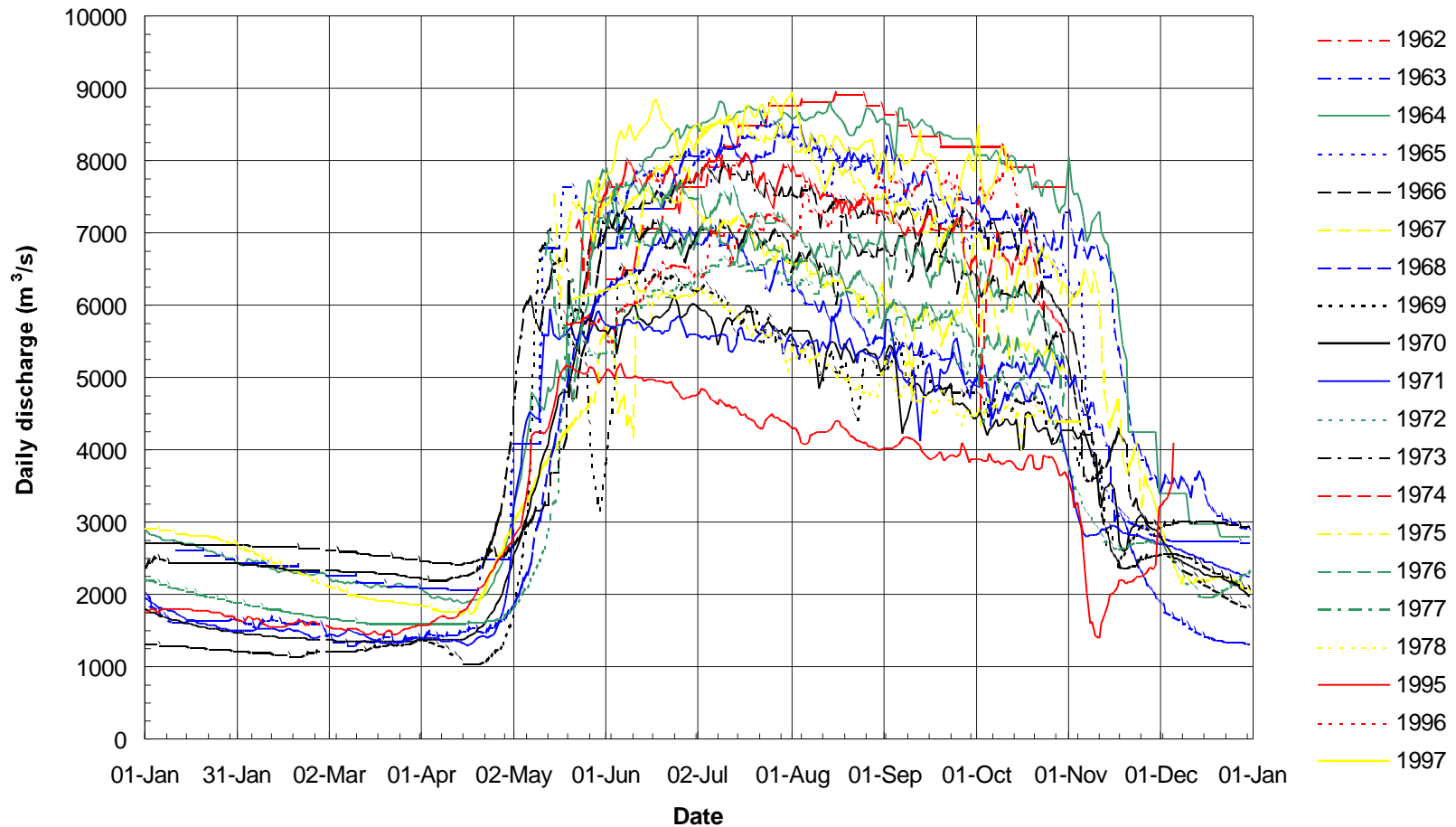


**Engineering and
Hydrographics Inc.**

210, 4812 - 87 Street
Edmonton, Alberta
Canada T6E 5W3

Phone: 780.496.7671
Fax: 780.463.7185
Trillium@trilliumeng.ab.ca

CLIENT			JIVKO ENGINEERING LTD.		
PROJECT			MACKENZIE RIVER BRIDGE AT FORT PROVIDENCE		
DISCHARGE RATING CURVES AT OUTLET OF GREAT SLAVE LAKE					
PROJECT NUMBER		DATE		FIGURE	
02-519		OCT. 29, 2002		2.6	



Engineering and
Hydrographics Inc.

210, 4812 - 87 Street
Edmonton, Alberta
Canada T6E 5W3

Phone: 780.496.7671
Fax: 780.463.7185
Trillium@trilliumeng.ab.ca

CLIENT

JIVKO ENGINEERING LTD.

PROJECT

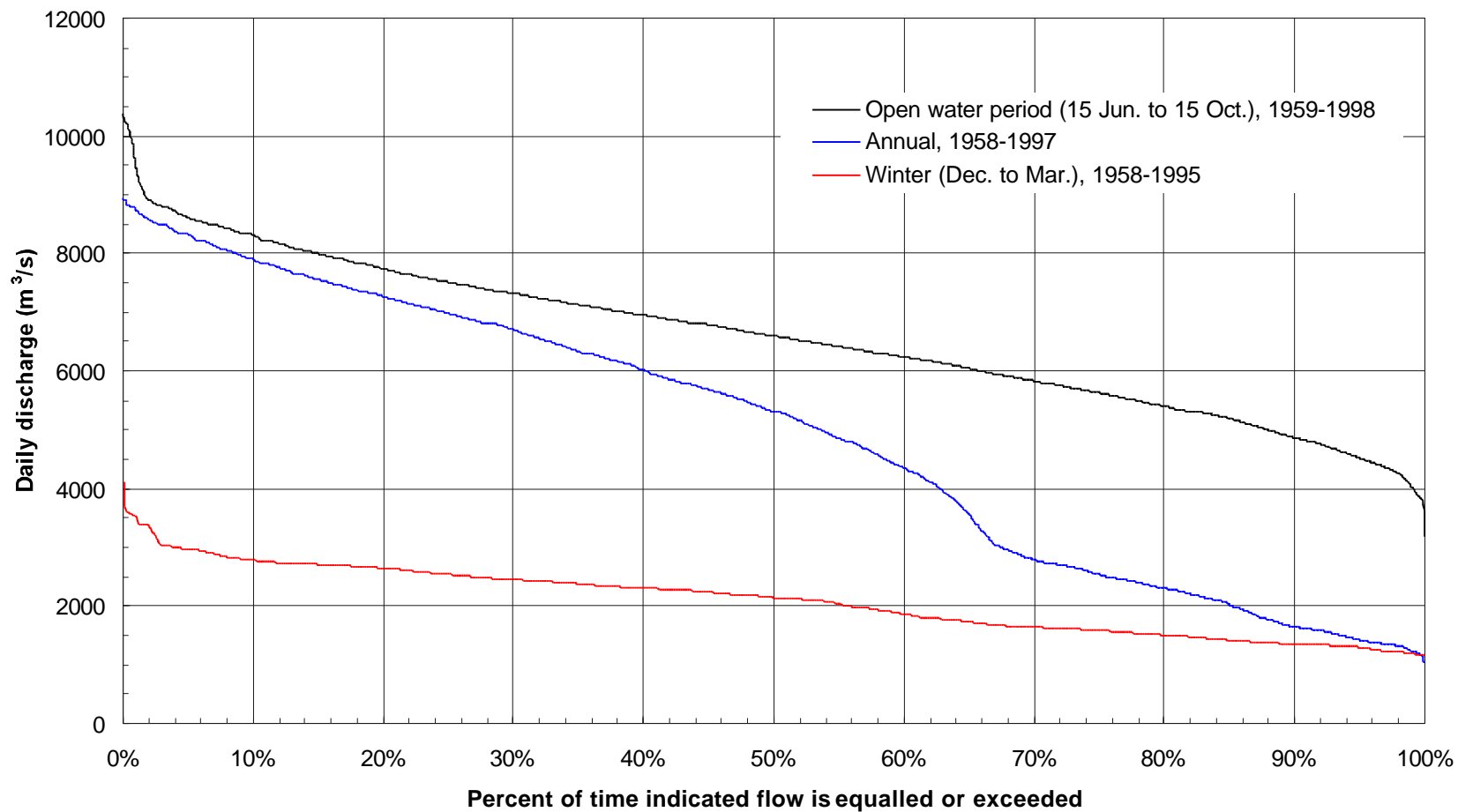
MACKENZIE RIVER BRIDGE AT FORT PROVIDENCE

ANNUAL DISCHARGE HYDROGRAPHS
AT FORT PROVIDENCE

PROJECT NUMBER
02-519

DATE
OCT. 29, 2002

FIGURE
2.7

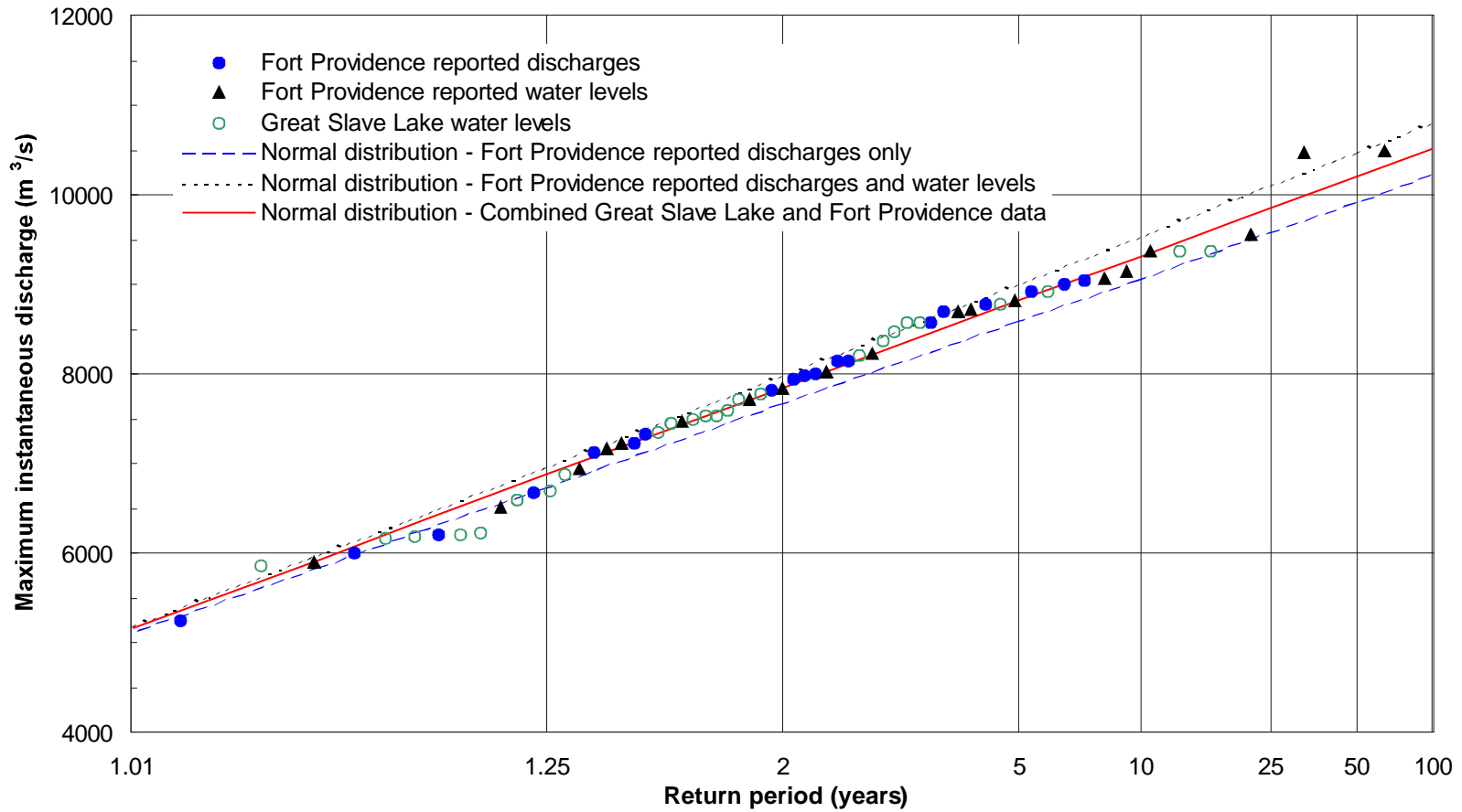


Engineering and
Hydrographics Inc.

210, 4812 - 87 Street
Edmonton, Alberta
Canada T6E 5W3

Phone: 780.496.7671
Fax: 780.463.7185
Trillium@trilliumeng.ab.ca

CLIENT			JIVKO ENGINEERING LTD.		
PROJECT			MACKENZIE RIVER BRIDGE AT FORT PROVIDENCE		
FLOW DURATION CURVES AT FORT PROVIDENCE					
PROJECT NUMBER		DATE		FIGURE	
02-519		OCT. 29, 2002		2.8	

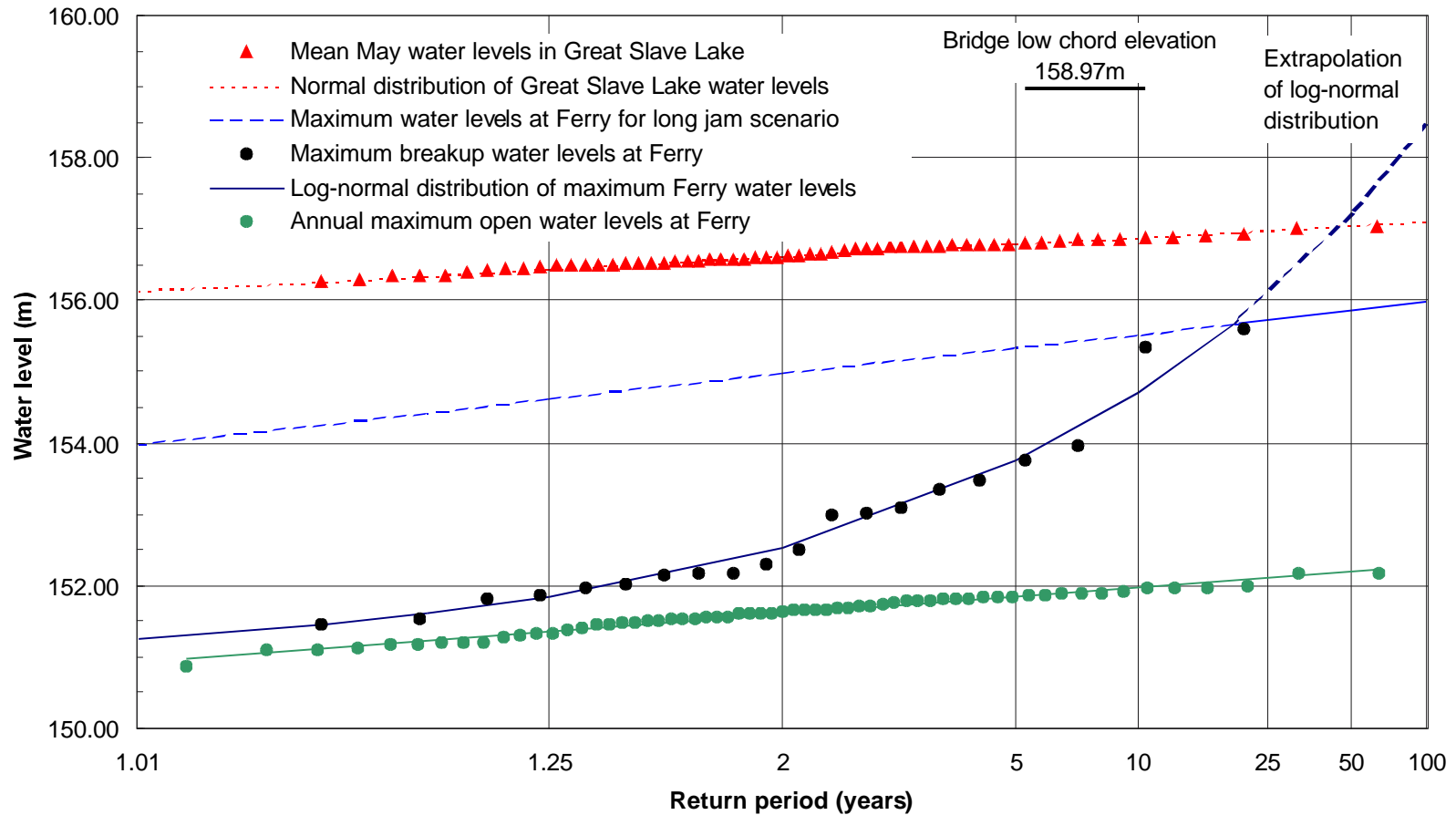


Engineering and
Hydrographics Inc.

210, 4812 - 87 Street
Edmonton, Alberta
Canada T6E 5W3

Phone: 780.496.7671
Fax: 780.463.7185
Trillium@trilliumeng.ab.ca

CLIENT			JIVKO ENGINEERING LTD.		
PROJECT			MACKENZIE RIVER BRIDGE AT FORT PROVIDENCE		
ANNUAL MAXIMUM DISCHARGE FREQUENCY CURVES AT FORT PROVIDENCE					
PROJECT NUMBER		DATE		FIGURE	
02-519		OCT. 29, 2002		2.9	

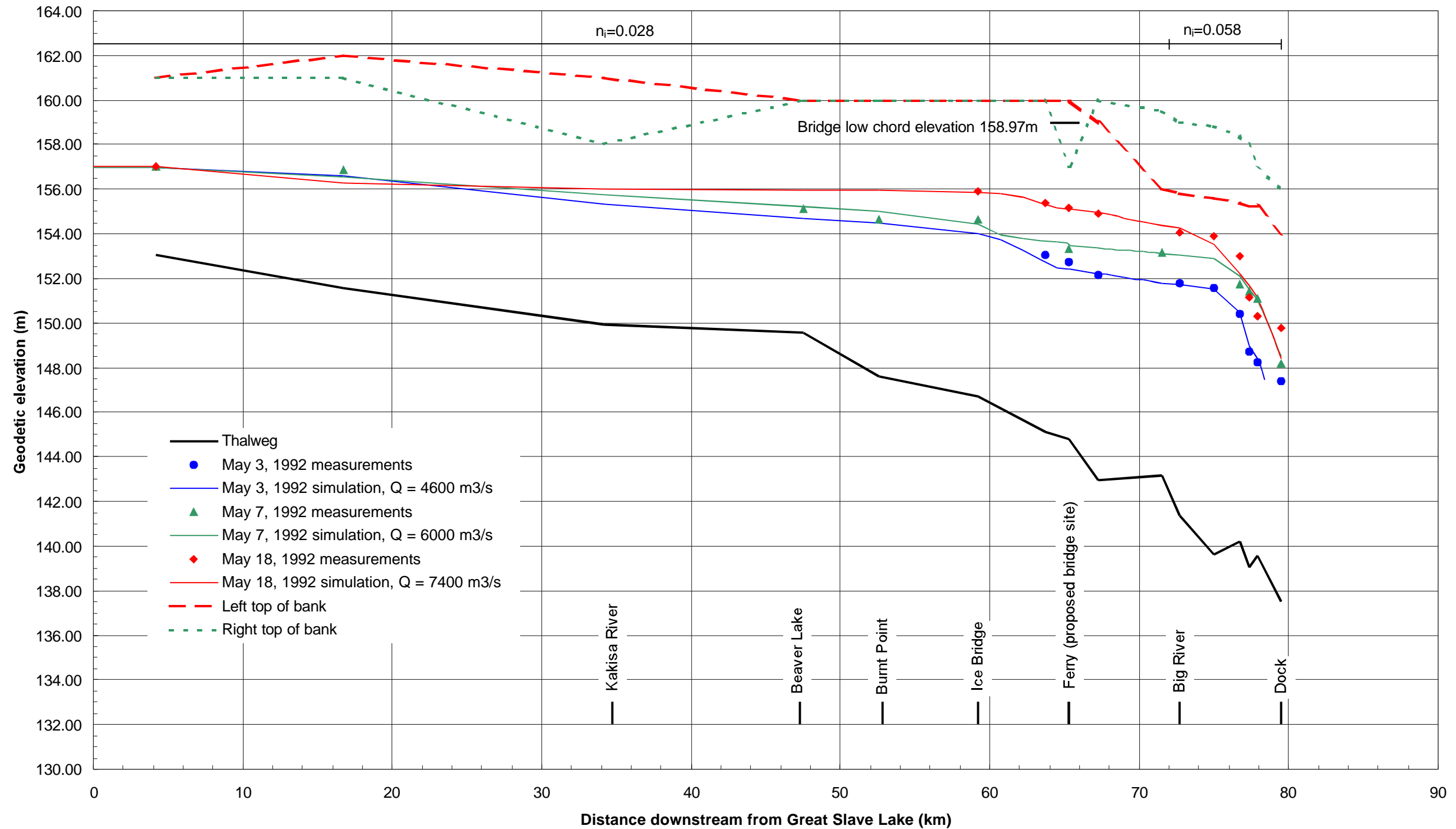


Engineering and
Hydrographics Inc.

210, 4812 - 87 Street
Edmonton, Alberta
Canada T6E 5W3

Phone: 780.496.7671
Fax: 780.463.7185
Trillium@trilliumeng.ab.ca

CLIENT			JIVKO ENGINEERING LTD.		
PROJECT			MACKENZIE RIVER BRIDGE AT FORT PROVIDENCE		
ANNUAL MAXIMUM BREAKUP WATER LEVEL FREQUENCY CURVES					
PROJECT NUMBER		DATE		FIGURE	
02-519		OCT. 29, 2002		3.1	

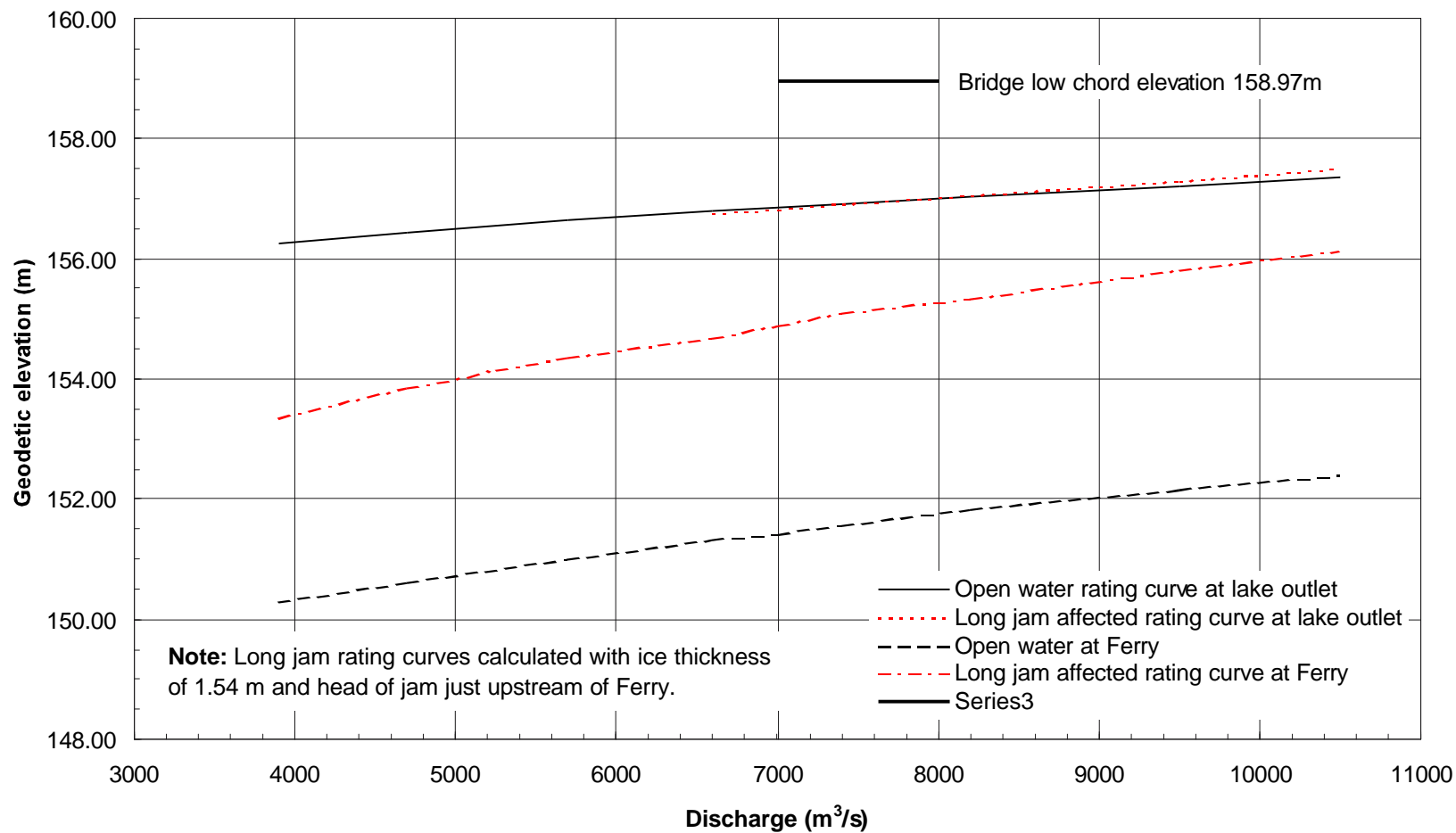


Engineering and
Hydrographics Inc.

210, 4812 - 87 Street
Edmonton, Alberta
Canada T6E 5W3

Phone 780.496.7671
Fax: 780.463.7185
Trillium@trilliumeng.ab.ca

CLIENT			JIVKO ENGINEERING LTD.		
PROJECT			MACKENZIE RIVER BRIDGE AT FORT PROVIDENCE		
CALIBRATION OF ICE-AFFECTED WATER LEVEL SIMULATIONS					
TRILLIUM FILE	DATE	FIGURE			
02-519	OCT. 29, 2002	3.2			

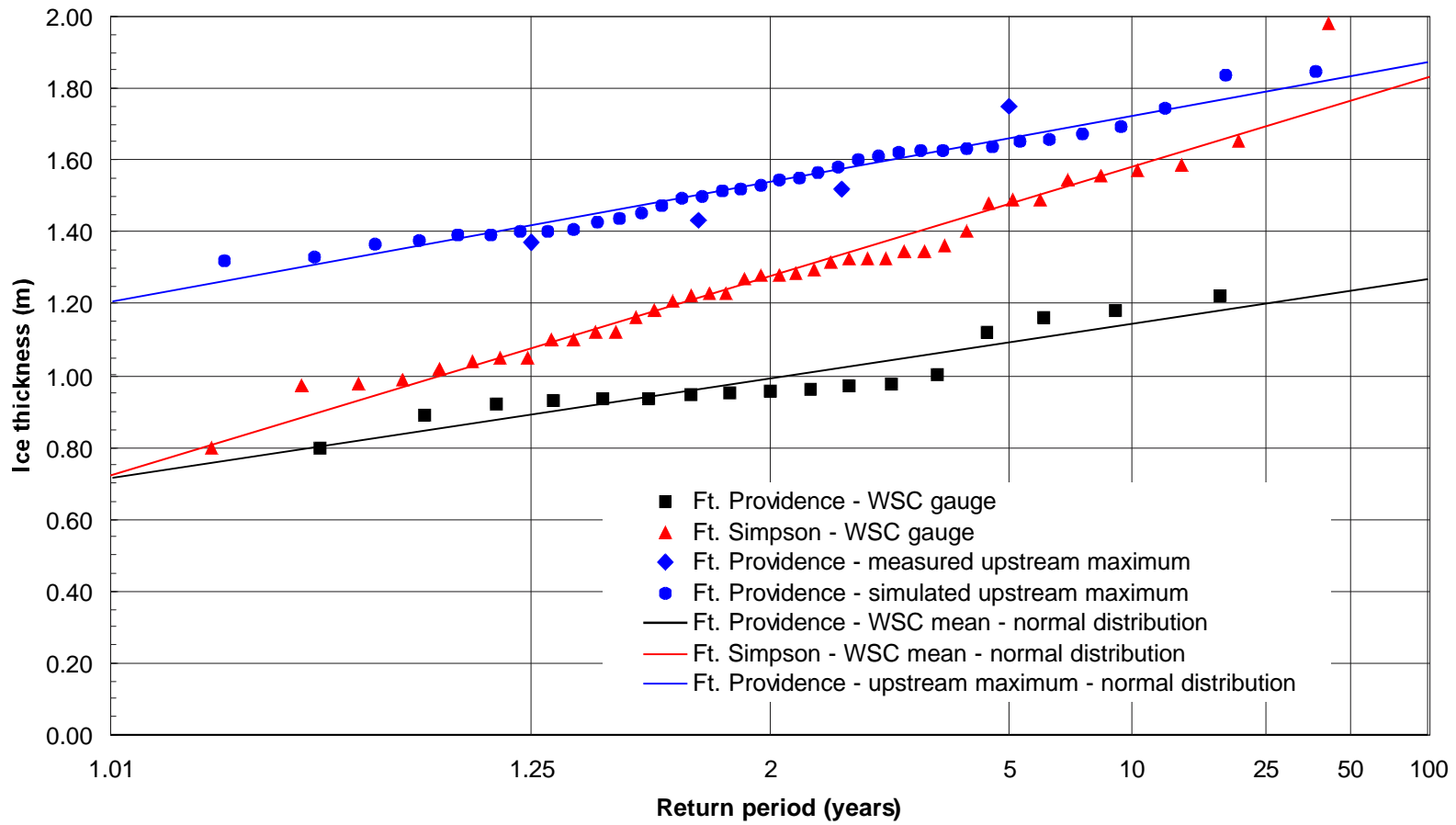


Engineering and
Hydrographics Inc.

210, 4812 - 87 Street
Edmonton, Alberta
Canada T6E 5W3

Phone: 780.496.7671
Fax: 780.463.7185
Trillium@trilliumeng.ab.ca

CLIENT			JIVKO ENGINEERING LTD.		
PROJECT			MACKENZIE RIVER BRIDGE AT FORT PROVIDENCE		
DISCHARGE RATING CURVES AT FERRY AND OUTLET OF GREAT SLAVE LAKE					
PROJECT NUMBER		DATE		FIGURE	
02-519		OCT. 29, 2002		3.3	

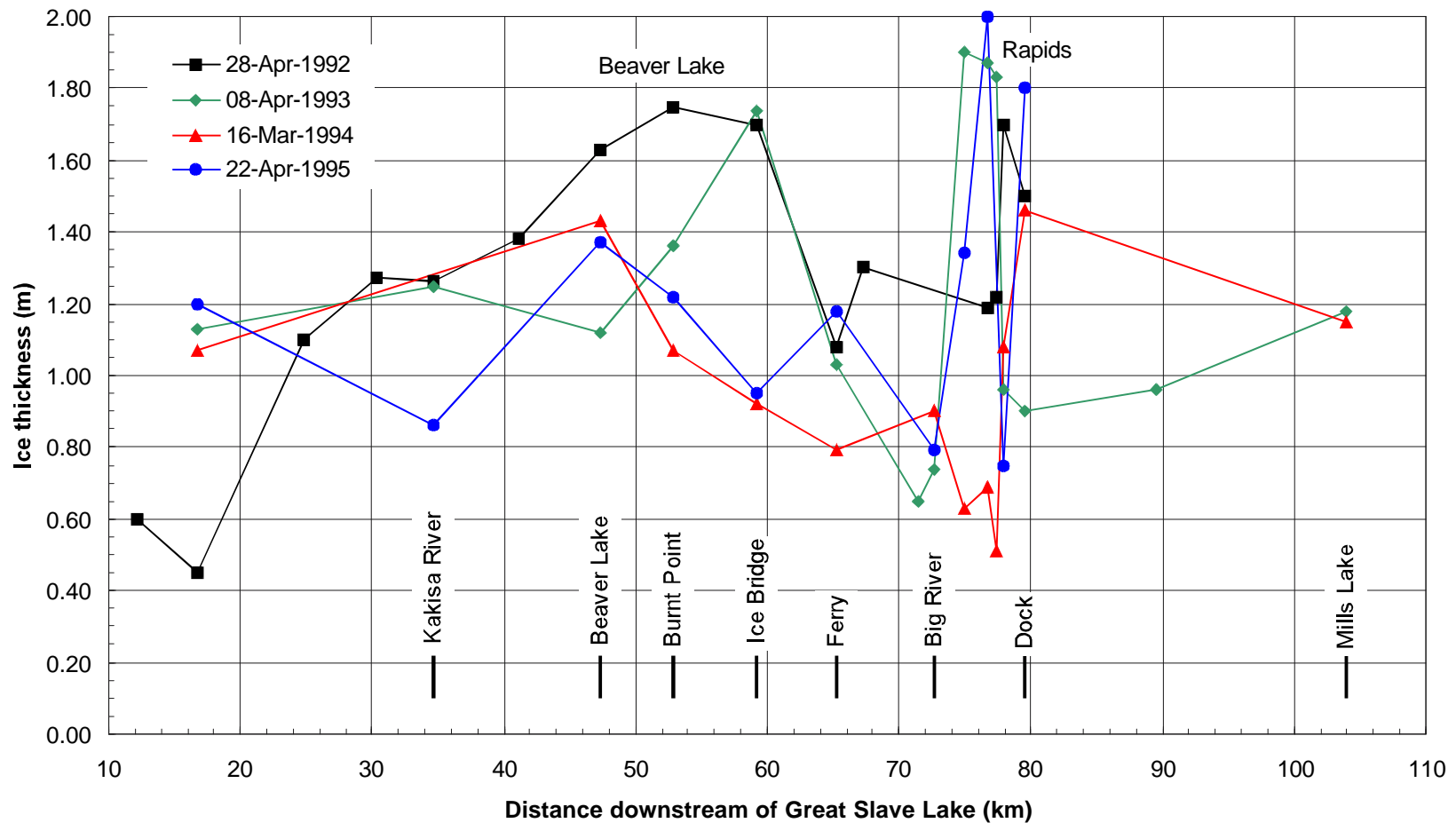


Engineering and
Hydrographics Inc.

210, 4812 - 87 Street
Edmonton, Alberta
Canada T6E 5W3

Phone: 780.496.7671
Fax: 780.463.7185
Trillium@trilliumeng.ab.ca

CLIENT			JIVKO ENGINEERING LTD.		
PROJECT			MACKENZIE RIVER BRIDGE AT FORT PROVIDENCE		
FREQUENCY CURVES OF REGIONAL ICE THICKNESS					
PROJECT NUMBER		DATE		FIGURE	
02-519		OCT. 29, 2002		3.4	

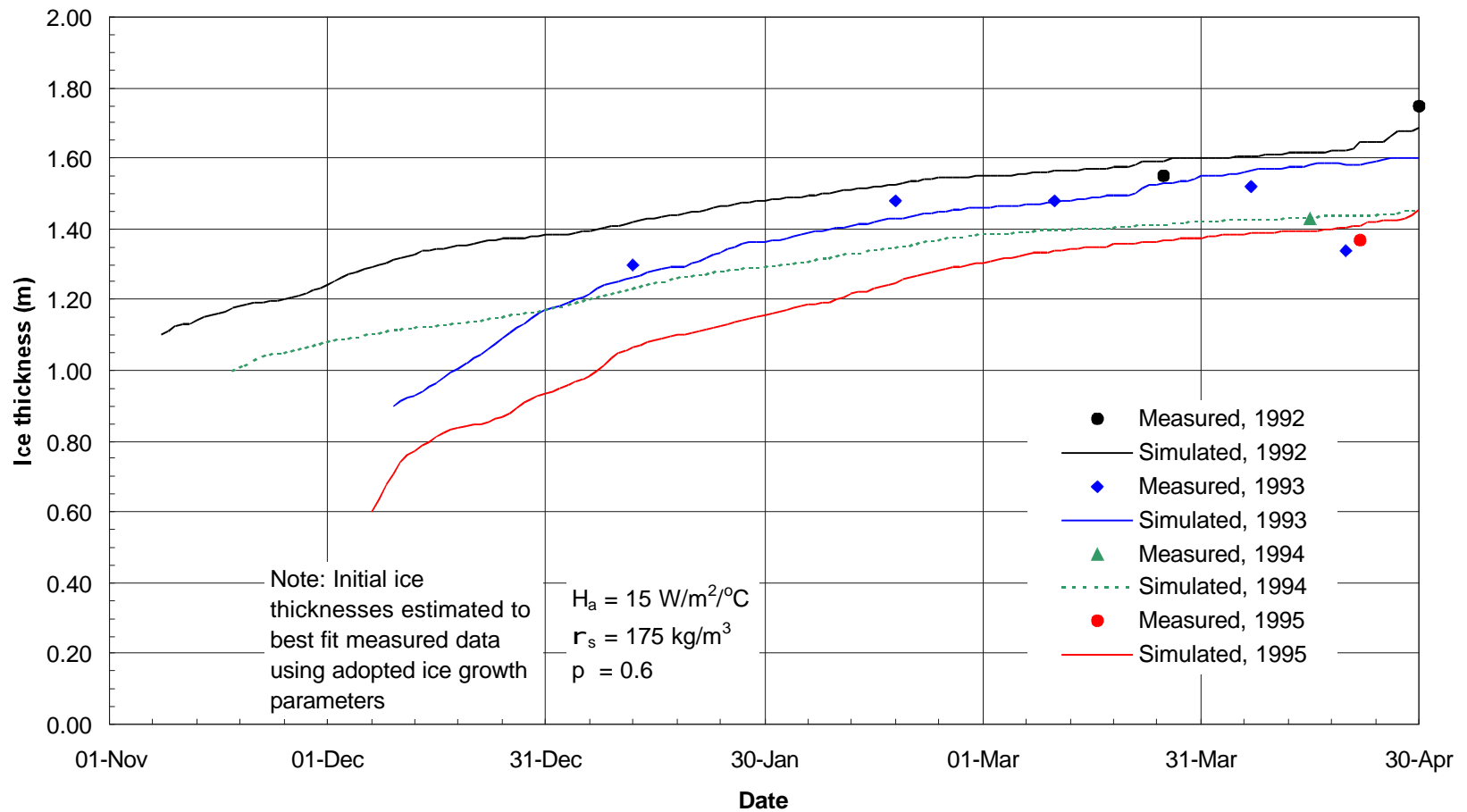


Engineering and
Hydrographics Inc.

210, 4812 - 87 Street
Edmonton, Alberta
Canada T6E 5W3

Phone: 780.496.7671
Fax: 780.463.7185
Trillium@trilliumeng.ab.ca

CLIENT		
JIVKO ENGINEERING LTD.		
PROJECT		
MACKENZIE RIVER BRIDGE AT FORT PROVIDENCE		
MEASURED ICE THICKNESSES IN VICINITY OF PROPOSED BRIDGE		
PROJECT NUMBER	DATE	FIGURE
02-519	OCT. 29, 2002	3.5

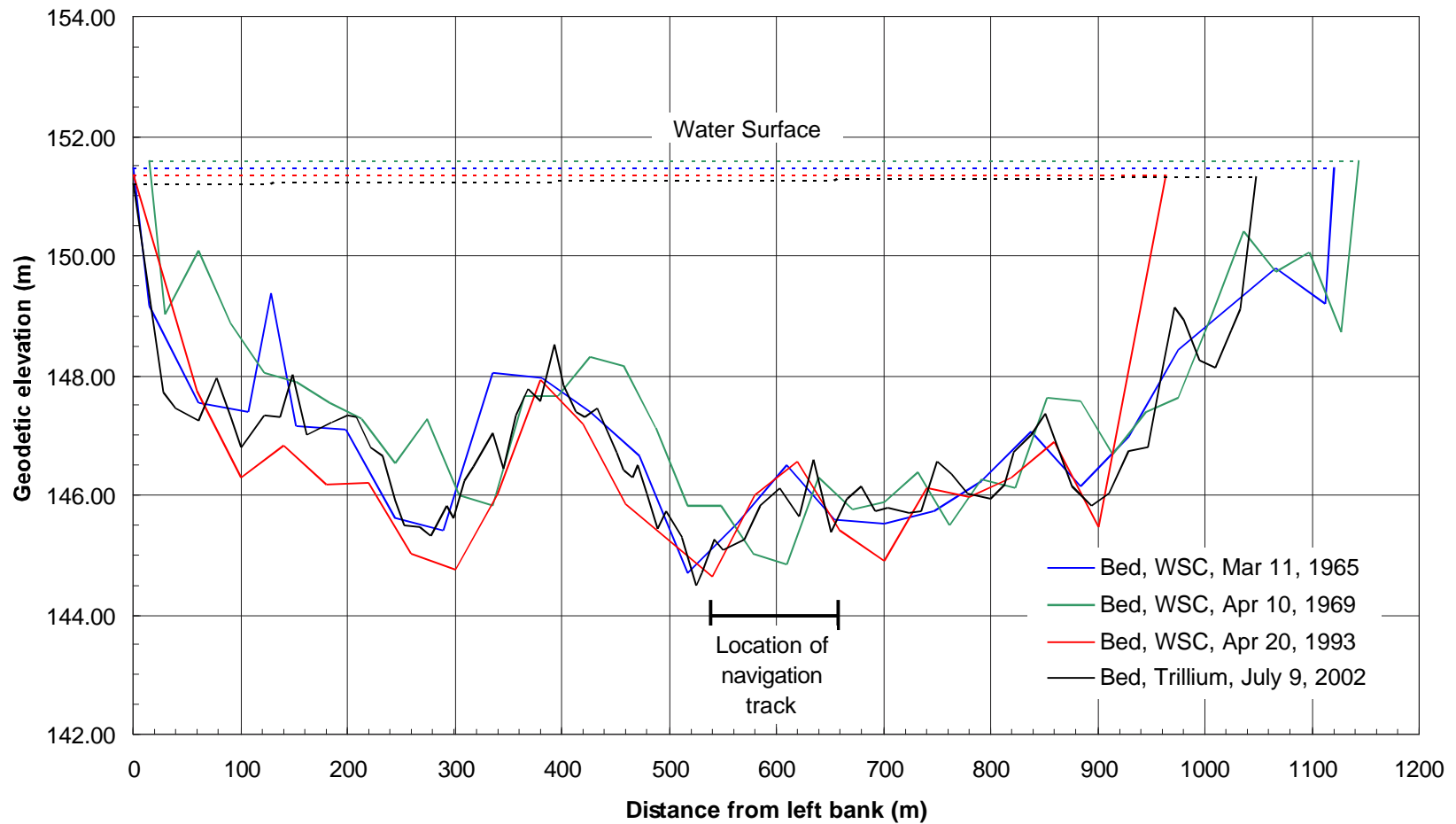


Engineering and
Hydrographics Inc.

210, 4812 - 87 Street
Edmonton, Alberta
Canada T6E 5W3

Phone: 780.496.7671
Fax: 780.463.7185
Trillium@trilliumeng.ab.ca

CLIENT			JIVKO ENGINEERING LTD.		
PROJECT					
MACKENZIE RIVER BRIDGE AT FORT PROVIDENCE					
COMPARISON OF MEASURED AND SIMULATED ICE THICKNESSES UPSTREAM OF PROPOSED BRIDGE					
PROJECT NUMBER		DATE		FIGURE	
02-519		OCT. 29, 2002		3.6	



**Engineering and
Hydrographics Inc.**

210, 4812 - 87 Street
Edmonton, Alberta
Canada T6E 5W3

Phone: 780.496.7671
Fax: 780.463.7185
Trillium@trilliumeng.ab.ca

CLIENT			JIVKO ENGINEERING LTD.		
PROJECT			MACKENZIE RIVER BRIDGE AT FORT PROVIDENCE		
COMPARISON OF CROSS SECTIONS MEASURED AT PROPOSED BRIDGE SITE FROM 1965-2002					
PROJECT NUMBER		DATE		FIGURE	
02-519		OCT. 29, 2002		4.1	