



2004 Winter Field Geotechnical Investigation Program in the Deh Cho Region

Environmental Assessment
Mackenzie Valley Environmental
Impact Review Board

Public Hearings

November 30: Trout Lake, NT

December 1 : Wrigley, NT

December 2 : Fort Simpson, NT



Developer's Opening Presentation

Program Summary

What do we want to do?

- Borehole drilling and excavating to collect soil samples

What will we do with the information?

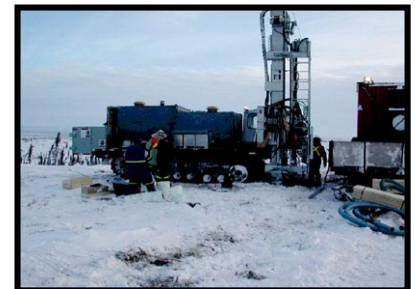
- Assess the engineering design and construction plans for the Mackenzie Valley pipeline
- Include it in regulatory applications for the Mackenzie Valley pipeline

How will we do the work?

- Set up four camps
- Prepare access to the sites
- Drill boreholes to get soil samples for laboratory frost heave measurements
- Drill boreholes at possible sites for river crossings by a pipeline
- Drill boreholes at possible borrow sites to look for gravel
- Excavate small test pits at possible borrow sites to collect granular samples
- Reclaim and restore all sites

How much work will be done in the Dehcho Region?

- Up to 43 borrow sites - approximately 236 boreholes and test pits
- Up to 10 frost heave sites - approximately 30 boreholes
- 5 water crossings - approximately 32 boreholes



Camp Locations

Dehcho North: Blackwater River to Willowlake River

- Near the Blackwater River - 65 person camp
- Near the Willowlake River - 65 person camp

Dehcho South: Willowlake River to Alberta Boundary

- Near the Trout Lake Road - 30 person camp
- At Checkpoint - 65 person camp



Program Activities near Trout Lake

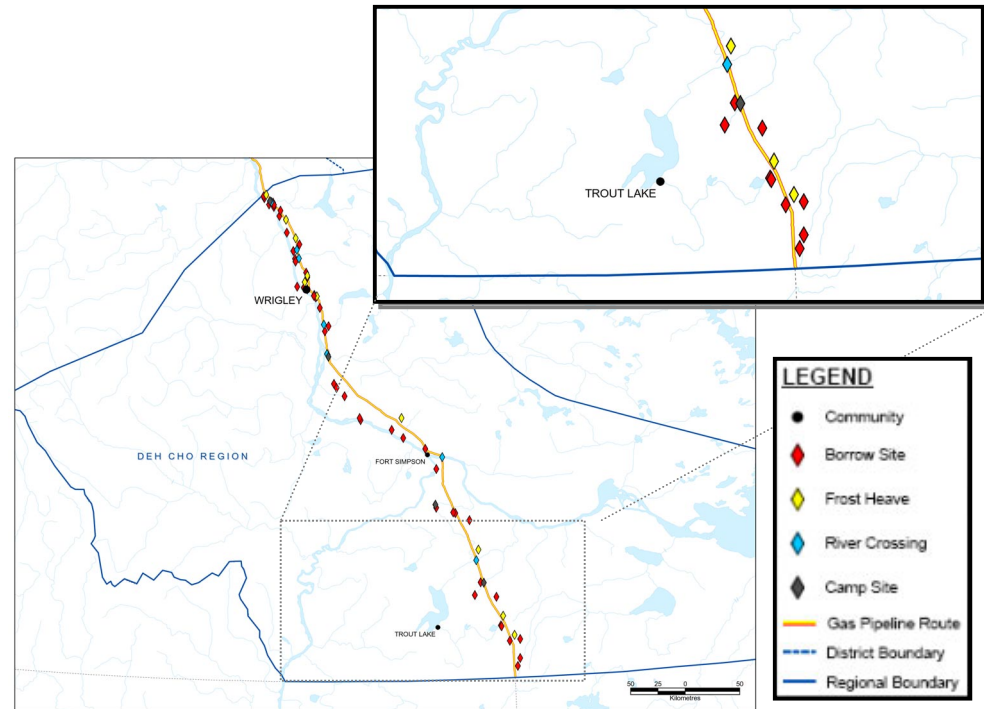
Environmental Assessment of the
2004 Winter Field Geotechnical Investigation
Program in the Deh Cho Region

Activities near Trout Lake

- Part of Dehcho South work area
- 9 borrow sites - 72 boreholes and test pits
- 3 frost heave sites - 9 boreholes
- 1 river crossing site - 4 boreholes

Typical Equipment Used

- Bulldozers, graders, tracked backhoes
- Borehole drilling rigs on tracks
- Tracked personnel carriers
- 4 x 4 pickups
- Tracked fuel carriers
- Brush cutters and hand clearing equipment
- Generators, water pumps, drill pumps
- Helicopters
- Tractor trailers, tandem axle trucks
- 30 person rig camp



Program Activities near Wrigley

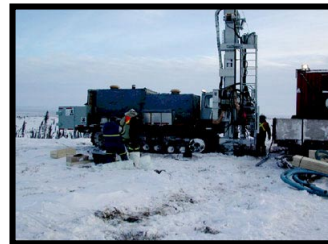
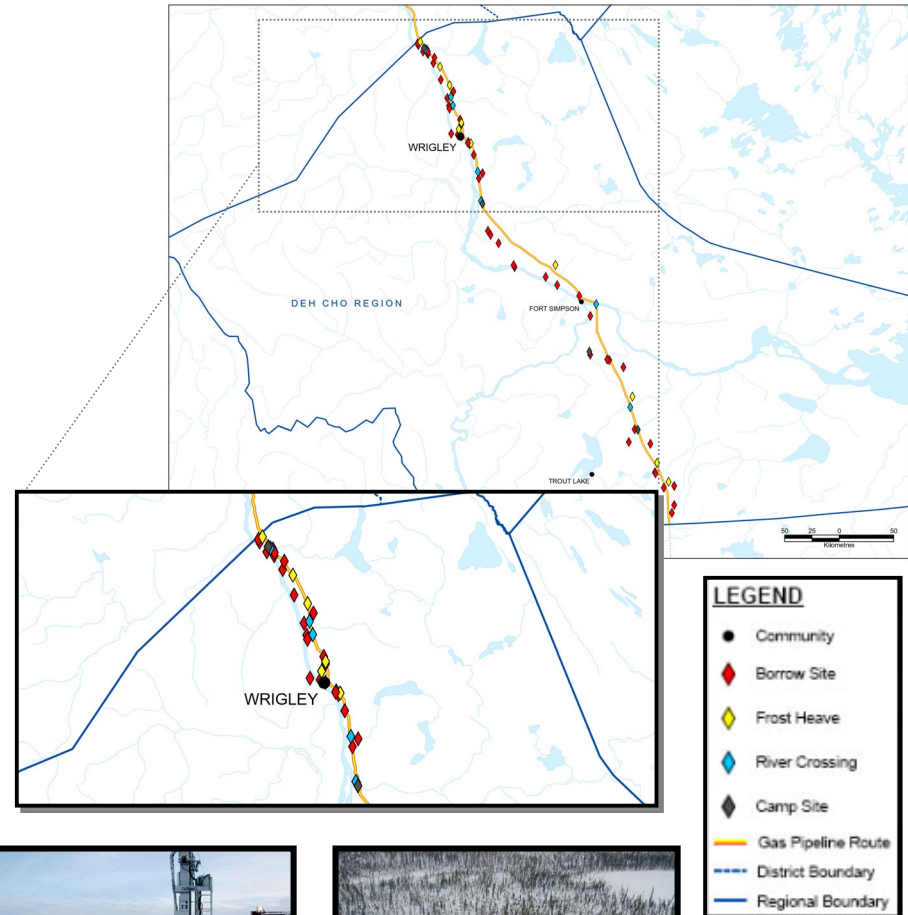
Environmental Assessment of the
2004 Winter Field Geotechnical Investigation
Program in the Deh Cho Region

Activities near Wrigley

- Part of Dehcho North work area
- 24 borrow sites - 117 boreholes and test pits
- 6 frost heave sites - 18 boreholes
- 6 river crossings - 24 boreholes

Typical Equipment

- Bulldozers, graders, tracked backhoes
- Borehole drilling rigs on tracks
- Tracked personnel carriers
- 4 x 4 pickups
- Helicopters
- Tracked fuel carriers
- Brush cutters and hand clearing equipment
- Generators, water pumps, drill pumps
- Tractor trailers, tandem axle trucks
- 65 person rig-type camps



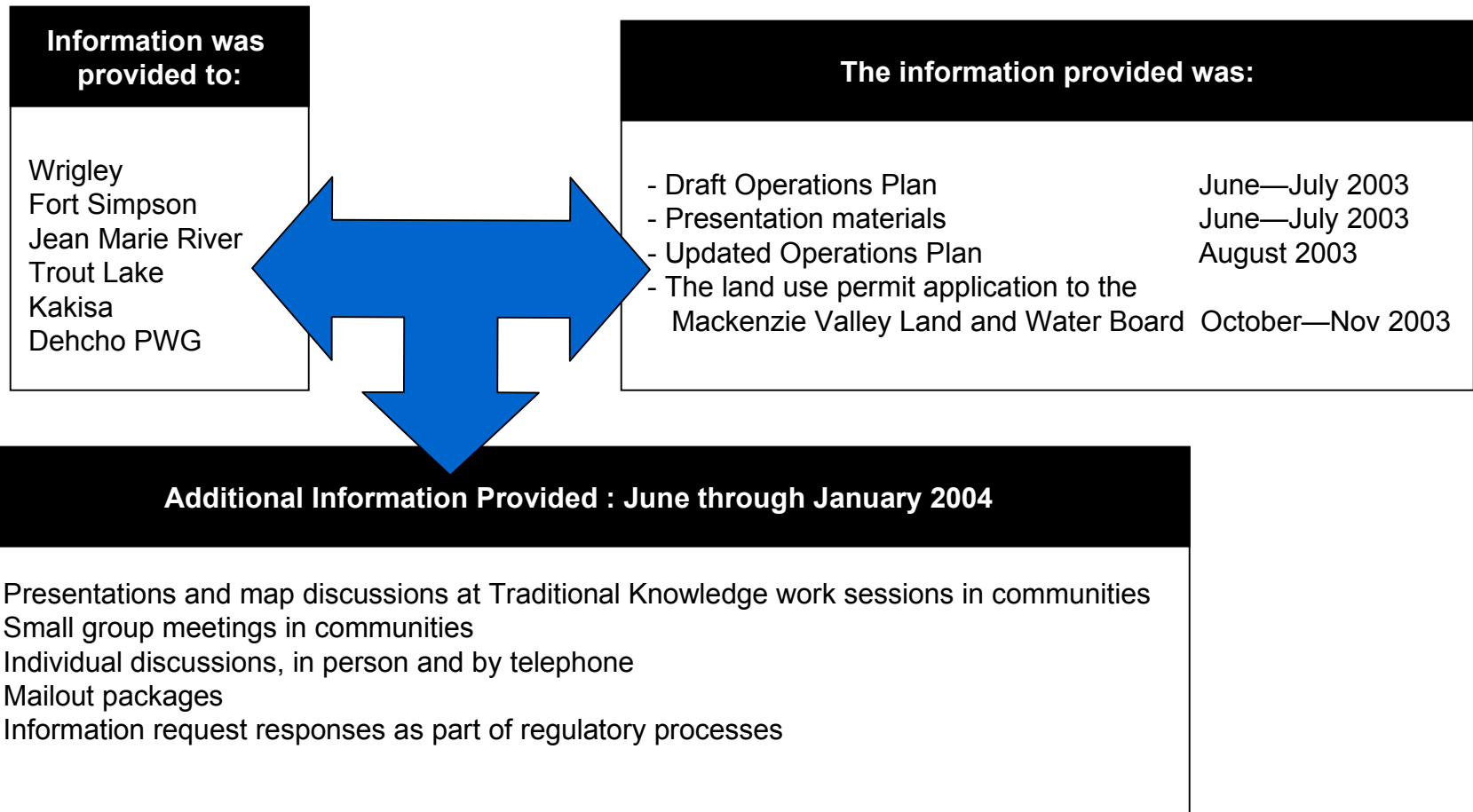
Site Restoration

- Boreholes and test pits are refilled with excavated material
- At end of program and in following summer Investigation sites and access are inspected by community environmental monitor, environmental supervisor and INAC inspectors
- Any restoration deemed necessary will be planned in conjunction with regulatory agencies and communities



Public Involvement Process

Environmental Assessment of the
2004 Winter Field Geotechnical Investigation
Program in the Deh Cho Region

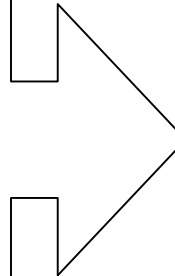


Public Involvement Improved the Program

Environmental Assessment of the
2004 Winter Field Geotechnical Investigation
Program in the Deh Cho Region

Helping the Dehcho Communities Influence the Program

- Participation in reconnaissance flights
- Early consultation using detailed materials
- Early, extended and continuing benefits discussions
- Funding to support benefits discussions



Examples of Program Changes Resulting from Community Input

- Dropped potential borrow site
- Changed access to water sources
- Changed camp locations
- Supported hiring environmental and wildlife monitors by local First Nations
- Held pre-qualifying workshops
- Broke work into smaller work scopes in bid packages
- Preference given to Dehcho businesses in conditional contract awards
- Tendered of work packages early

Protection Plans

Protecting the People

- Workers
- Communities

Protecting the Land

- Land
- Water

Protecting the Wildlife

- Animals
- Fish

Dehcho Businesses have Opportunities to Bid on Work

- Camp and catering
- Geotechnical drilling
- Geophysical surveying
- Geotechnical consulting
- Land surveying
- General services
- Emergency medical services
- Communication systems

Dehcho Individuals can Develop their Skills

- Safe work practices
- Environmental protection training
- Use of tools

Dehcho Companies can Build their Business Capacity

- Preparing bid packages
- Managing staff and equipment
- Monitoring and improving performance
- Using Quality assurance programs

Mackenzie Gas Project Designs in Dehcho Region will be Better

- Designs and construction plans
- Environmental Impact mitigation

Dehcho Knowledge of Local Resources Improved

- Borrow sources identified and measured

Dehcho Communities Gain Economic Activity

- Local purchases of supplies
- Local purchases of services



- Program will allow Imperial to improve the design and construction plans for the Mackenzie Gas Project activities in the Dehcho Region
- Program design and operations plan have been developed and improved with consideration of input from the communities
- Program will bring advantages to the Dehcho people and to Dehcho businesses
- Safeguards are in place to ensure that commitments are met



Imperial and its contractors will conduct the program with respect for the people, the land and the wildlife.