

# Heritage Resources

MVEIRB Public Hearing  
Consolidated Gold Win Ventures Ltd.  
Sidon International Resources Corp.



Glen MacKay  
Assessment Archaeologist, GNWT  
April 3-4, 2007



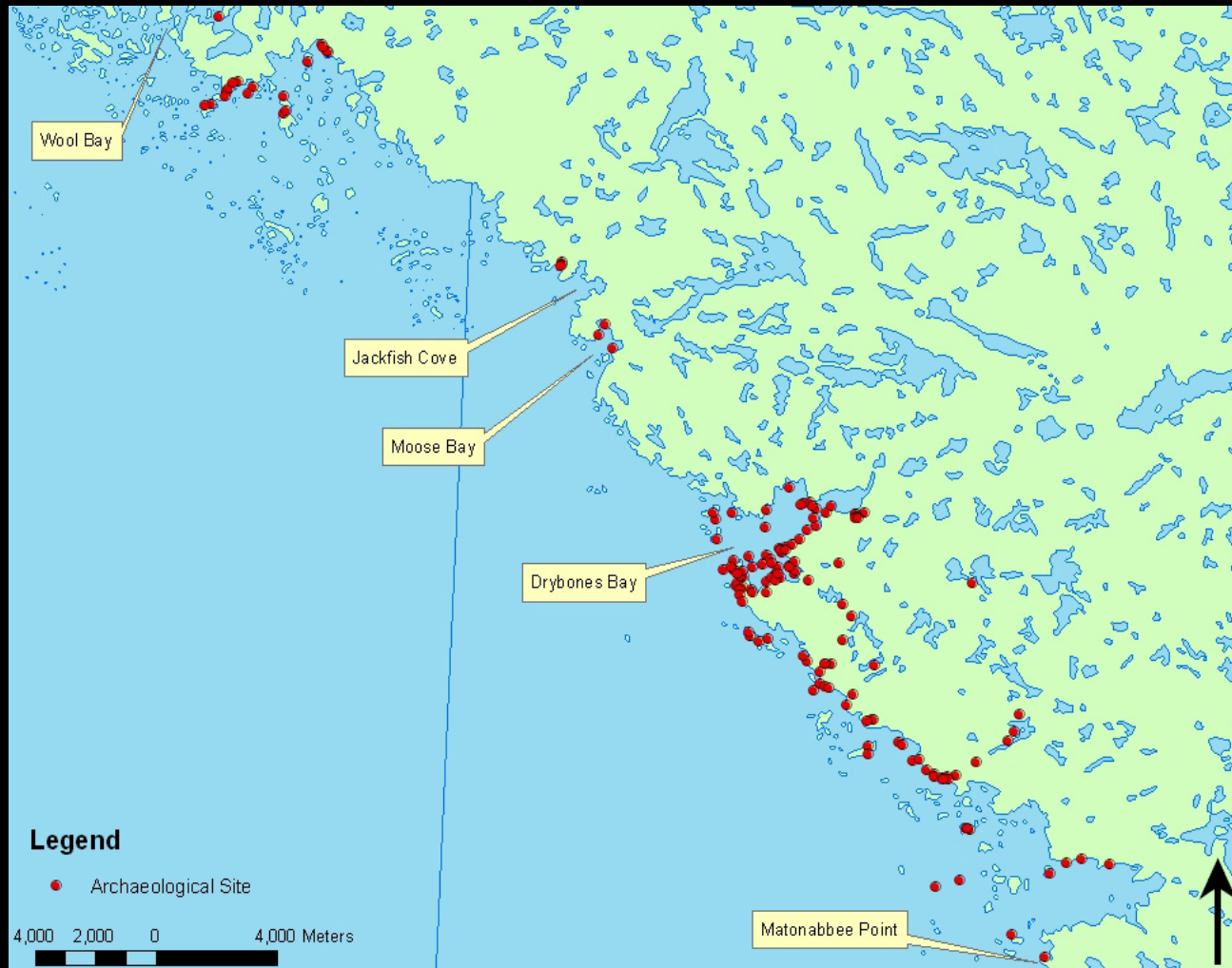
PRINCE OF WALES  
NORTHERN  
HERITAGE  
CENTRE

# Definition of Heritage Resources

## *Mackenzie Valley Resource Management Act*

- “heritage resources” are defined as archaeological or historic sites, burial sites, artifacts and other objects of historical, cultural or religious significance, and historical or cultural records.

# Recent Archaeological Investigations in the Drybones Bay Area





Burials and Cemeteries



Cabins and Camps





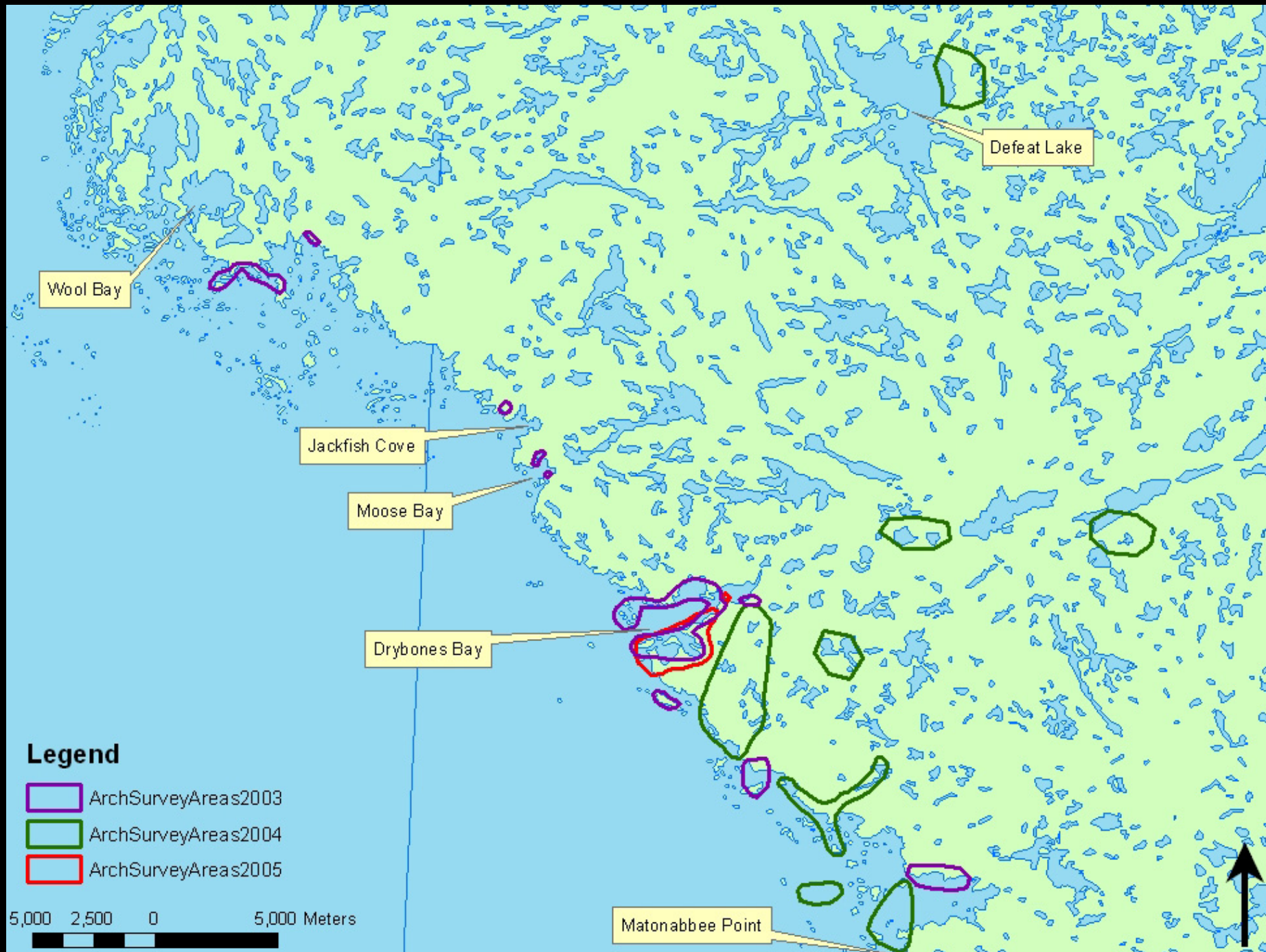
## Lithic Scatters and Quarries

Boulder Features  
(tent rings, hide-drying weights,  
birchbark presses)



# Knowledge Gained/Gaps

- Very high archaeological potential along the shoreline of Great Slave Lake between Wool Bay and Matonabee Point
- Archaeological potential of inland areas is less well-defined
- Significant gaps in the survey coverage of the shoreline and inland areas
- Survey methodology did not include systematic examination of study areas



Wool Bay

Defeat Lake

Jackfish Cove

Moose Bay

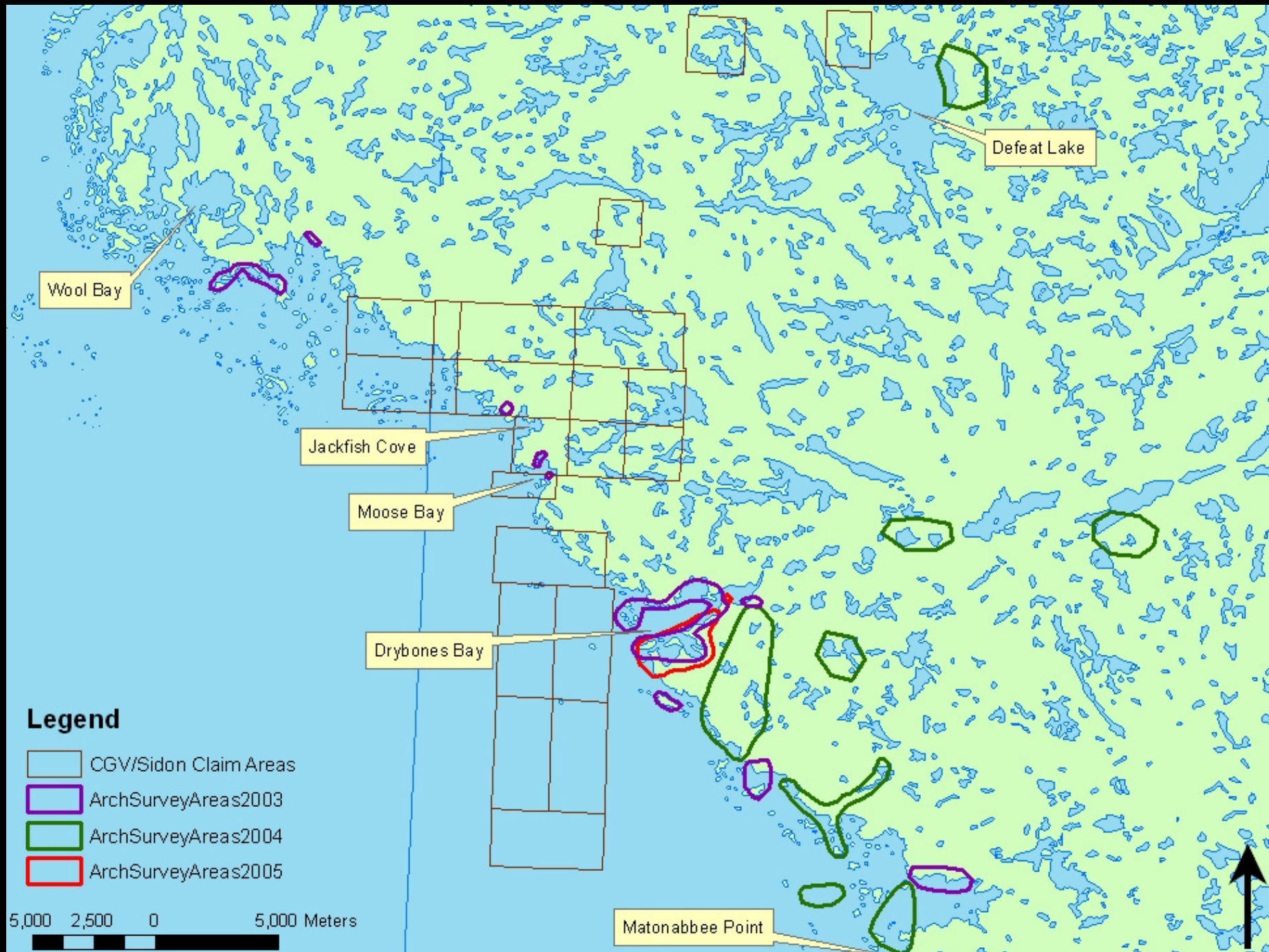
Drybones Bay

Matonabee Point

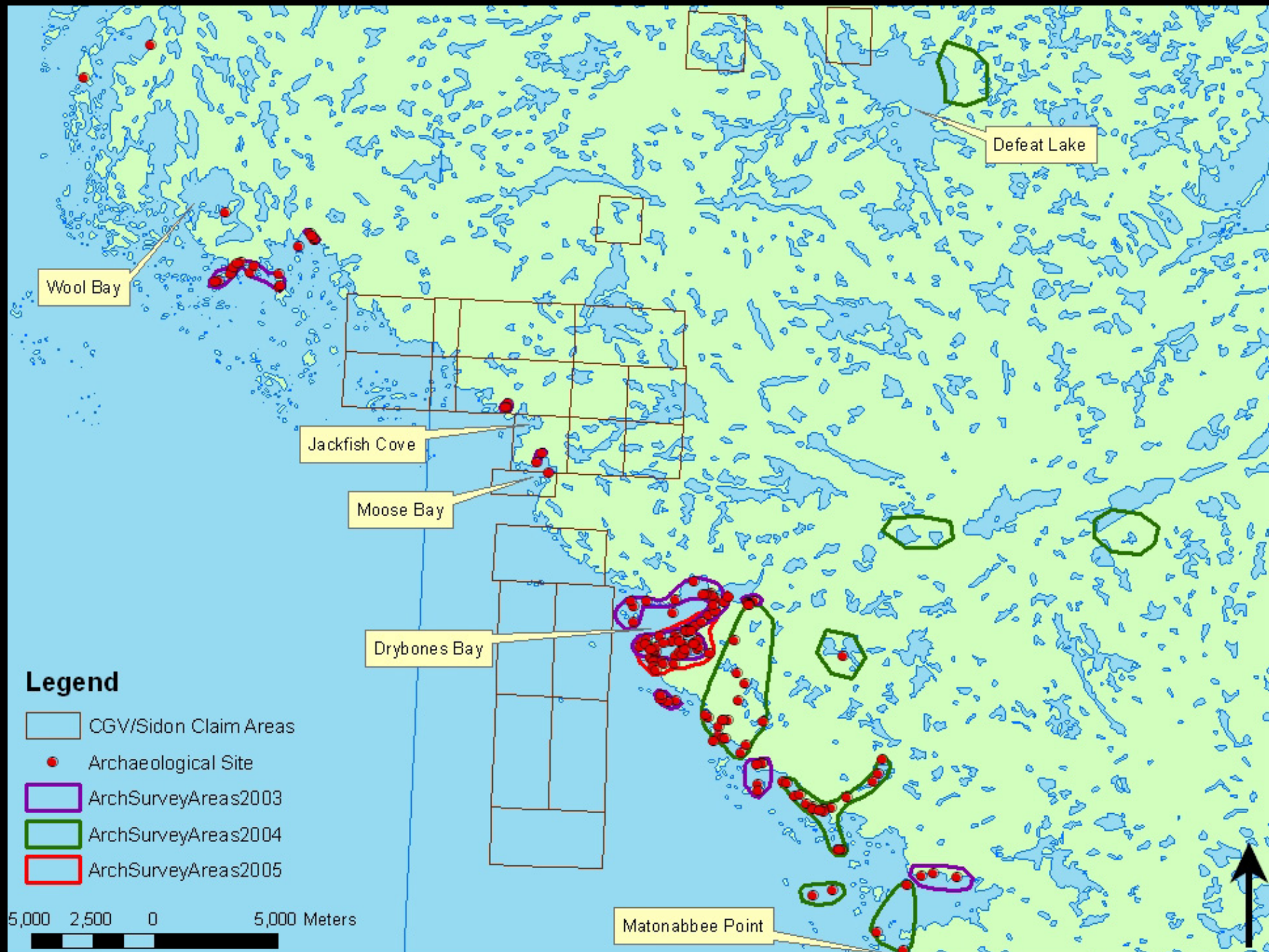
**Legend**

- ArchSurveyAreas2003
- ArchSurveyAreas2004
- ArchSurveyAreas2005

5,000 2,500 0 5,000 Meters







# Assessment of the CGV/Sidon Exploration Areas

- An archaeologist has not assessed the proposed exploration areas in adequate detail
- The shoreline and island zones of the exploration areas have very high potential for undocumented archaeological sites
- Inland areas are expected to have moderate-to-high potential based on traditional use studies

# Recommendations to MVEIRB

- The Developers undertake detailed heritage resource impact assessments of the proposed CGV and Sidon exploration areas prior to development activities
- The Developers remain a minimum of 30 m from the borders of all archaeological sites
- The Review Board impose a buffer of 100 m around burial sites and cemeteries

# Recommendations to MVEIRB

- The Developers submit detailed project maps to the PWNHC that clearly indicate the avoidance of all heritage resources
- The Developers retain the services of local environmental monitors representing the affected Dene and Metis groups to be on-site during development activities