



# MVEIRB Gahcho Kue Public Hearing

Government of the Northwest Territories

April 10, 2006

# Presentation Outline

- Issue identification and rating process
- Overview of important issues identified by GNWT
- Issues of high public concern



# Process Overview

Scoping Workshop

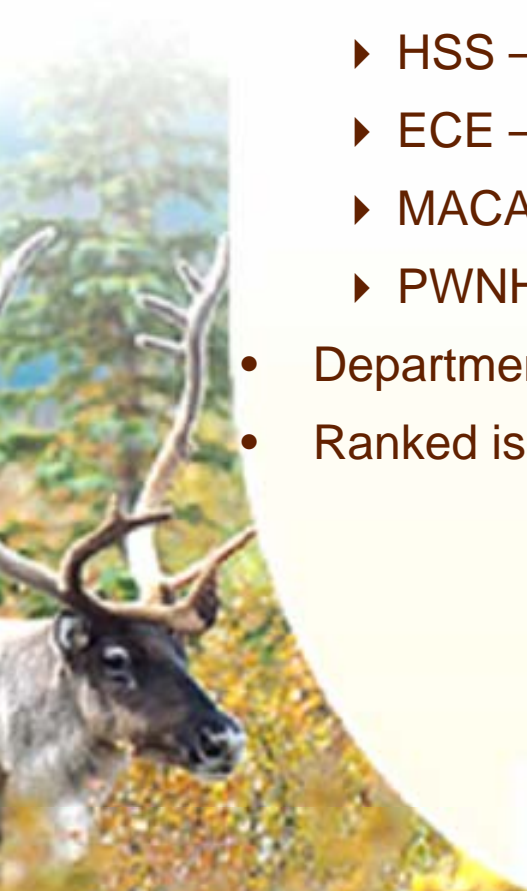
GNWT Approach to Issue Ranking

GNWT Approach to Scoping



# Specific Issues With the Process

- GNWT Departments that participated in the scoping of this project.
  - ▶ ENR - Environment and Natural Resources
  - ▶ DOT – Department of Transportation
  - ▶ ITI – Industry, Tourism and Investment
  - ▶ HSS – Health and Social Services
  - ▶ ECE – Education Culture and Employment
  - ▶ MACA – Municipal and Community Affairs
  - ▶ PWNHC – Prince of Wales Northern Heritage Centre
- Departments reviewed 95 socio-economic and biophysical issues
- Ranked issues High, Moderate, Low



# Environment and Natural Resources (1)

## Cumulative impacts on

- ▶ caribou,
- ▶ carnivores and
- ▶ species at risk



# Environment and Natural Resources (2)

- Air Quality and Emissions

- ▶ Canada-wide Standards (CWS) for Dioxins and Furans and the CWS for Mercury Emissions
- ▶ caribou forage concerns
- ▶ alternative energy sources



# Environment and Natural Resources (3)

- Waste Management and Effective Closure
  - ▶ innovative practices in bulk purchasing,
  - ▶ alternative products to hazardous materials
  - ▶ identifying acid rock drainage issues early in the mine life.



# Department of Transportation (1)

Increasing costs and pressures on existing physical infrastructure





# Department of Transportation (2)

Emergency measures:

- hazardous waste transport and
- potential for spills



# Department of Transportation (3)

Increased competition for

- labour force,
- materials and
- contractors

for community and transportation infrastructure services



# Health and Social Services (1)

Impacts on individual, family and community well-being



# Health and Social Services (2)

- Impacts on health and social programs and services



# Education, Culture & Employment (1)

## Employment

- Employment targets need to be set and monitored.



# Education, Culture & Employment (2)

## Training:

- A sustainable workforce depends on training programs geared towards providing northerners with transferable skills.



# Education, Culture & Employment (3)

## Cultural Stability

- Increased development and non-traditional economy may weaken cultural activities without monitoring and mitigation.



# Industry, Tourism and Investment (1)

- NWT Business
  - ▶ local businesses
  - ▶ business partnerships and joint ventures





# Industry, Tourism and Investment (2)

- Sustainable Economy

- ▶ total expected value of the resources
- ▶ capacity building and diversification initiatives
- ▶ regions and boundaries



# Industry, Tourism and Investment (3)

- Follow up and Monitoring
  - ▶ Socio-Economic Agreement (SEA)
  - ▶ written assurance of commitments



# Potential Issues of Public Concern

- **Declining Caribou Numbers**
- **Cumulative Effects**



# Questions?

