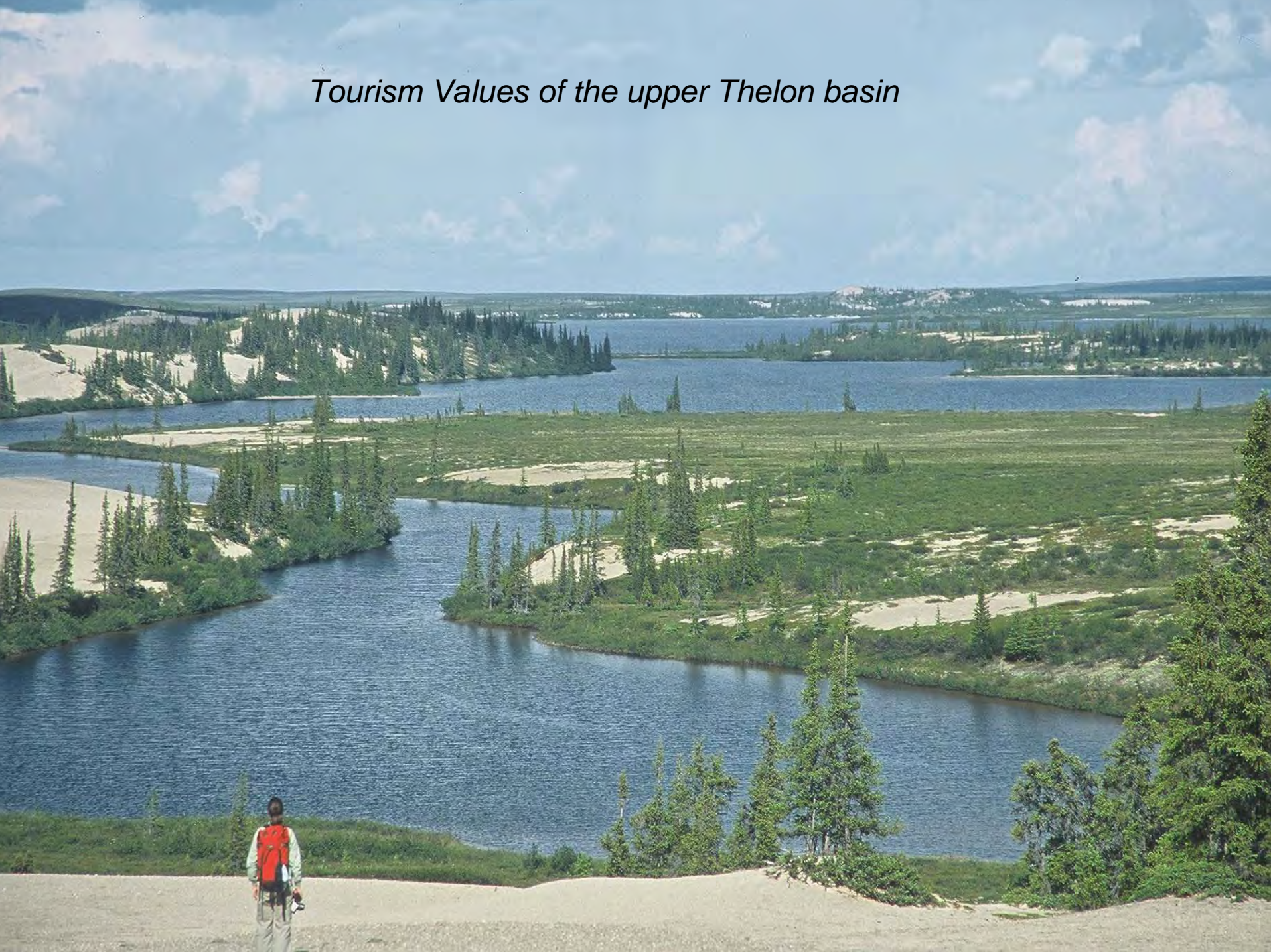


# The Upper Thelon River



*Canada's Wilderness Jewel*

*Tourism Values of the upper Thelon basin*







*The entire Thelon is recognized as a world-class wilderness destination.*





*"The rugged landscape not only offered unparalleled views but an incredible diversity of wildlife."*

*"The rugged landscape not only offered unparalleled natural beauty..  
but an incredible diversity of wildlife."*



*"I valued my time spent in Thelon country as a visit to one of the most impressive scenic locations in all of North America." - Art Wolfe*





***"I doubt that the great majority of animals we stalked and photographed had any recognition of us as human. They may not have ever seen humans before."***

**– Galen Rowell**

***The upper Thelon Basin has highly significant wildlife values***





Cows & calves of the **Beverly** herd following the upper Thelon in July

*Photo taken approximately 15 km from Screech camp,  
3 km from Uravan Boomerang Lake camp*





*Photo taken near Boomerang esker – approximately 22 km from Screech camp, 14 km from Boomerang Camp.*





*Crossing the upper Thelon – approximately 10 km  
from Boomerang camp, 20 km from Screech camp*





**Black-eyed calves of the Upper Thelon summer migration – Beverly herd**

*Photo taken near Beaverhill Lake – approximately 3 km from Screech camp*





*Early September on the Upper Thelon*





A high-angle, wide shot of a massive herd of caribou grazing on a lush green hillside. The animals are densely packed across the slope, which extends to the horizon under a clear blue sky. The text is overlaid on the right side of the image.

**The Beverly & Ahiak Caribou herds are the last of  
the great NWT & Nunavut mainland herds with an  
unobstructed migratory range**

*Photo taken at upper Thelon River –  
17 km from Screech camp, 6 km from Uravan Boomerang camp*

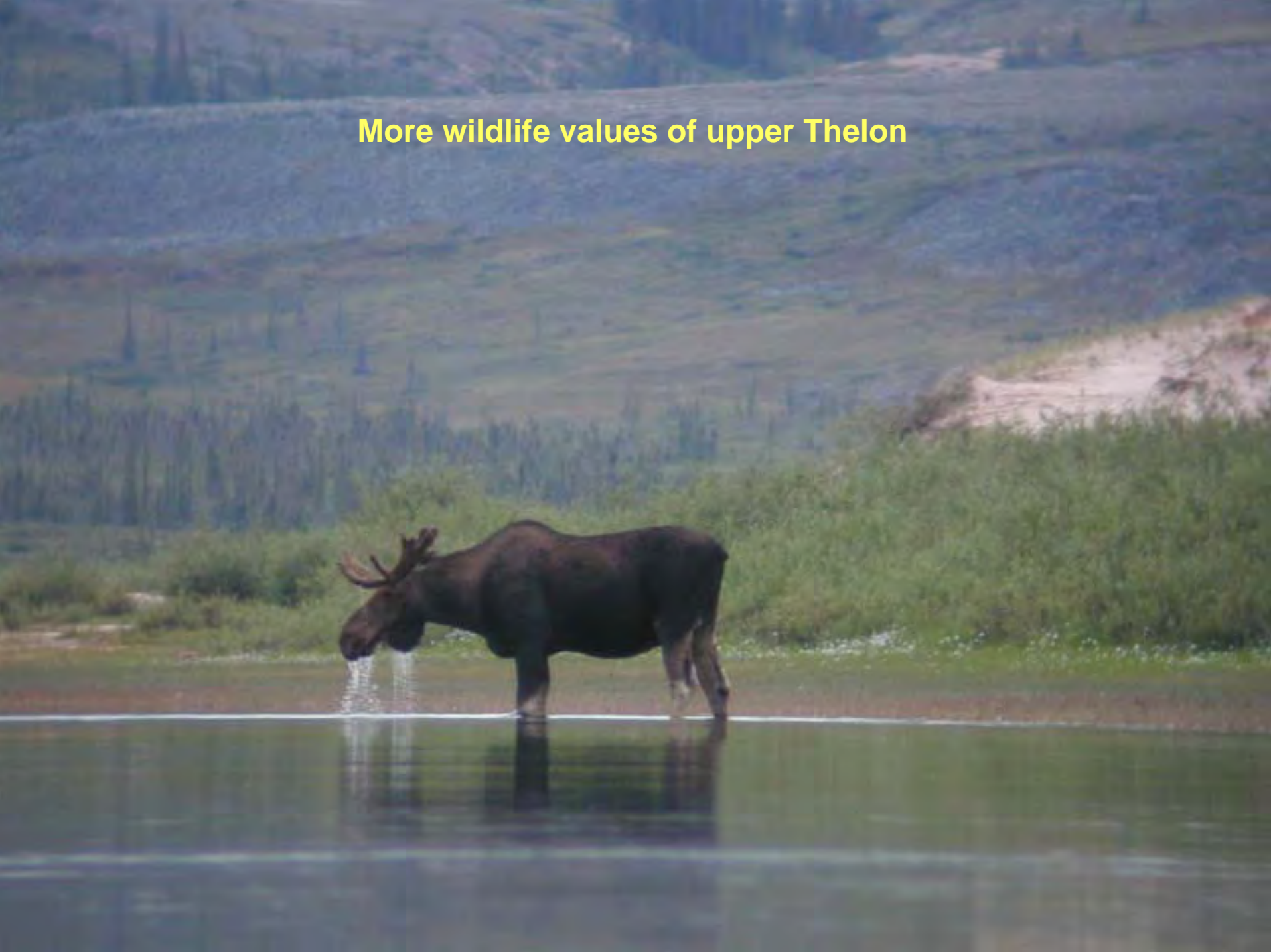




*Photo taken on Beewick esker – approximately 12 km from Boomerang Camp, 18 km from Screech Camp*



## More wildlife values of upper Thelon





**Moose populations on the Thelon River system spread from the center of the Thelon Wildlife Sanctuary south to the upper Thelon by Eyeberry Lake, and along the eskers to the south and east**



*Photo taken on Beewick Esker – approximately 6 km  
from Boomerang Camp, 18 km from Screech Camp*



*Photo taken approximately 8 km Northwest of Screech Camp*





***The unique sand-based esker systems of the upper Thelon provide important and critical habitat for other wildlife species and birds.***





***Uravan Boomerang Lake Camp***





*The upper Thelon eskers are important den habitat for tundra wolves*





*All photos taken on the eskers of the Upper Thelon*



*Photo taken on Boomerang esker – approximately 12 km from Screech camp*











***The Upper Thelon Basin has highly significant historical, Spiritual & Cultural Values***













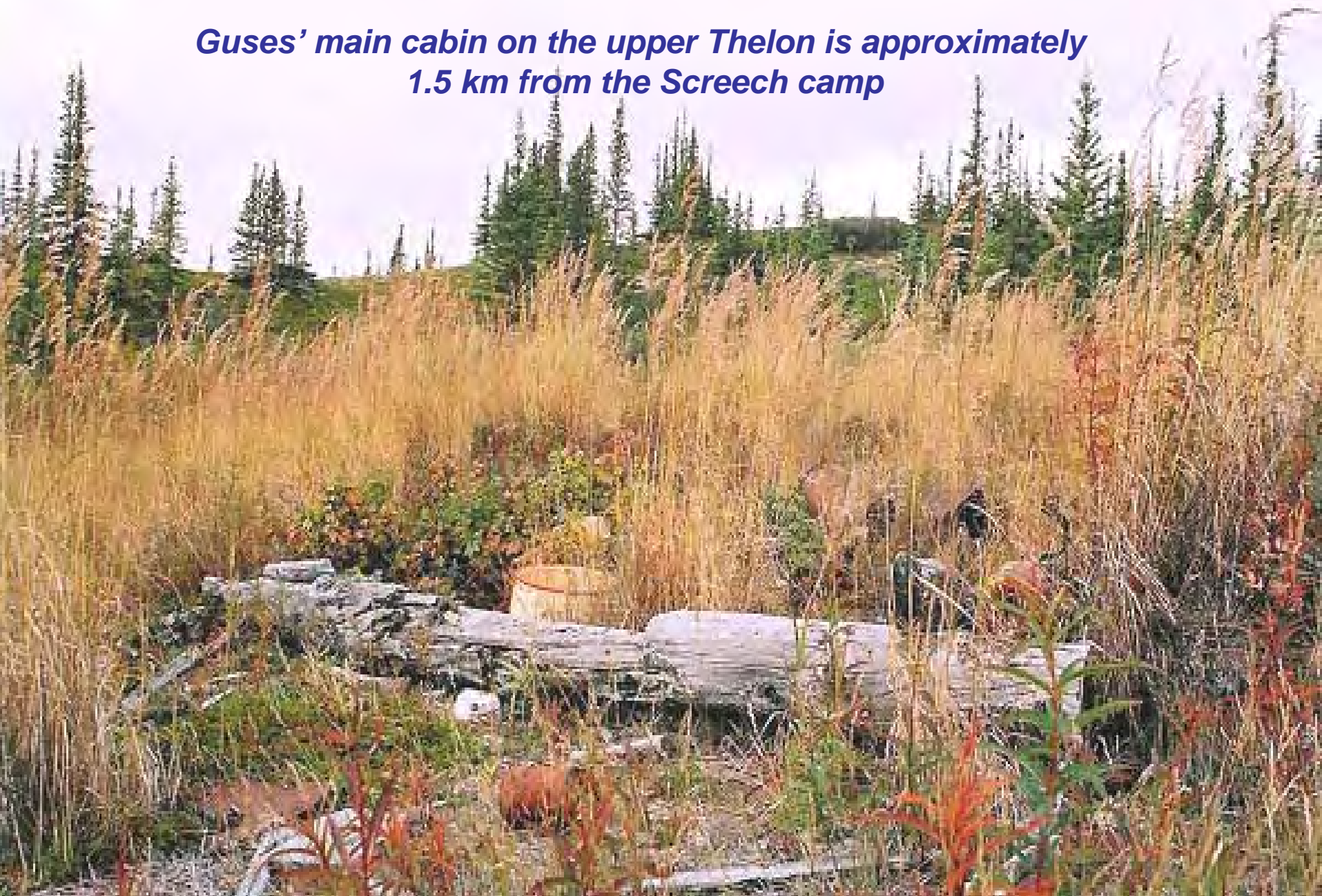






**One of Gus Daoust's cabin-sites on the Boomerang esker.**

***Guses' main cabin on the upper Thelon is approximately  
1.5 km from the Screech camp***





*RCMP Expedition historical site  
– approximately 15 km from  
Screech camp*



*Emil Bode & Gene Olson Gravesite – approximately 16 km from Screech camp*







***Olson-Bode murder site – upper Thelon River***



*What is the value of last wilderness?*





















*Thank you..*

*Marshi Cho*





