



The South Thelon Valley

“A Northern Paradise”

by: WWF-Canada



Reasons for WWF Intervention

- To promote a logical planning process (conservation first)
- To support conservation efforts of the local aboriginal community
- To protect areas of special cultural values and wildlife habitat



Topics of Discussion

1. Principle of Conservation First
2. A Place with Special Values
3. Certainty of Future Cumulative Effects



Topic 1 – Conservation First

- Getting the process right
- Planning for conservation can *only* happen *before* development
- Developers must know where they stand as early as possible



Topic 2 – A Place with Special Values

- Oasis on the Barrens
- Designated Special Management Area in Thelon Management Plan
- Thay Dene Nene

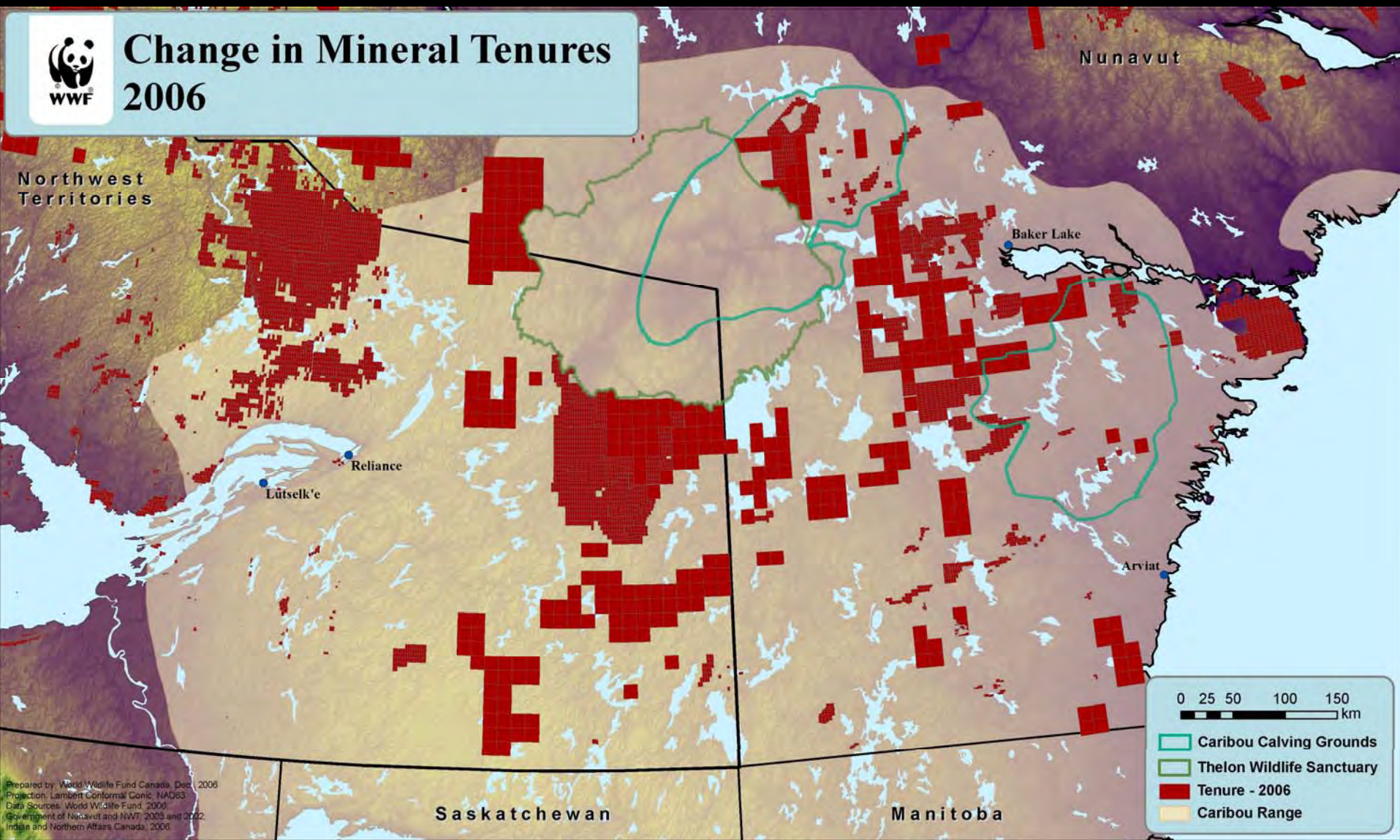


Topic 3 – Future Cumulative Effects

- The Uraniferous Thelon Basin
- “Uranium is the shooting star of 2006” (Dec 13, Globe and Mail)
- Recent claim staking rush



Change in Mineral Tenures 2006



Prepared by: World Wildlife Fund Canada, Dec. 2006
Projection: Lambert Conformal Conic, NAD83
Data Sources: World Wildlife Fund, 2006;
Government of Nunavut and NWT, 2003 and 2002;
Indian and Northern Affairs Canada, 2006.

Cumulative Effects and The Beverly Herd

- Thelon Uraniferous Basin underlies all of Beverly Herd calving and post calving areas.
- South Thelon directly on PRIMARY migration route
- Government of Canada inconsistently lobbies USA for no drilling in caribou calving ground in ANWR Alaska



What This Means

- There will certainly be extensive cumulative effects to follow
- Because the South Thelon is an area with special values culturally for the Dene and for the survival of the Beverly Herd, PAUSE AND PLAN
- Incumbent upon government to provide clarity for investors in mining exploration, PAUSE AND PLAN







