

**Why Lutsel K'e Dene First Nation is  
opposing the East Arm Routing of the  
Talston Hydro Expansion**

**A MATTER OF CULTURAL  
SURVIVAL**

*To allow development of transmission lines and tower construction staging areas at this time in the Desnedhe Che Area, over the expressed opinions in opposition by the people who live there, fully knowing they have engaged in a long struggle to have thoughtful land use planning and protection of this area realized, and having the knowledge that they worked hard with other governments to see the withdrawal of these areas important to them, is not morally defensible.*

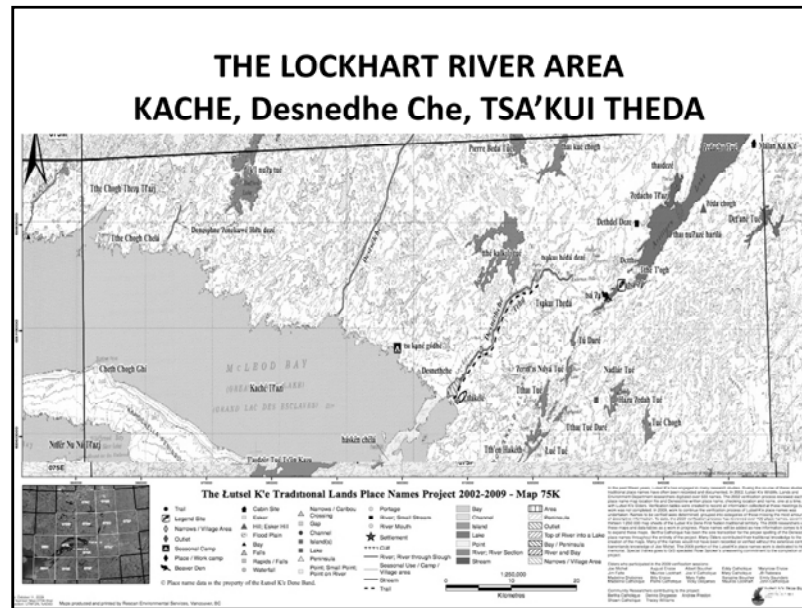


## Our Presentation Summary

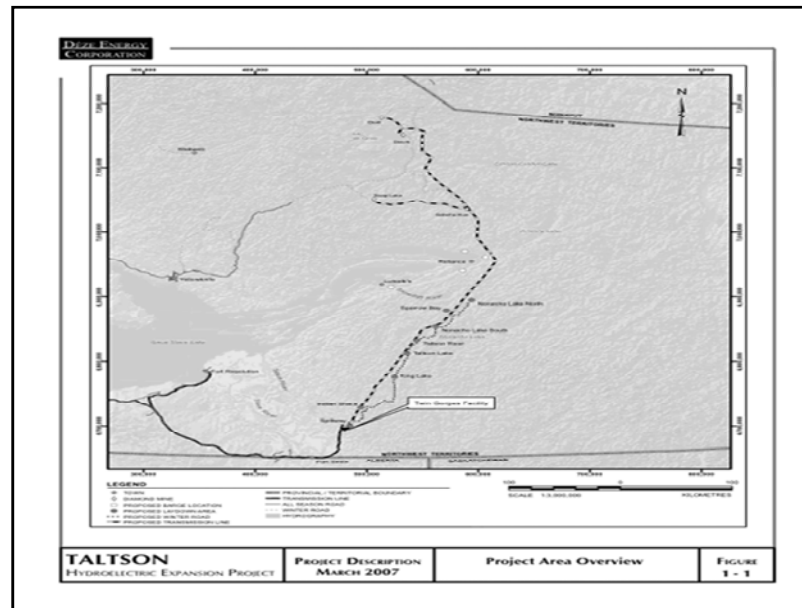
- T Williams (15 minutes): Power point highlighting Lutsel K'e's main issues.
- All Lutsel K'e Chief's Statement (10 minutes): Present & Former Chiefs join together for a unified message that Desnedhe Che-Kache area is off-limits to industrial development.
- Former Chief Antoine Michel (10 minutes): The continuous struggle for acknowledgement of this message of protection; Lutsel K'e Dene are stewards of Desnedhe Che-Kache.
- Elder George Marlowe (10 Minutes): The spiritual meaning and significance of the Old Lady of the Falls: The land and people are one. Living testimony to the significance of the healing land & a healing people.
- Youth Desiree Jonnasson for Elder Pierre Catholique: (10 minutes): Will provide Review Board with the story of Ts akui Theda (Old Lady of the Falls). The Lutsel K'e Legend of a higher authority.
- Sayiz Catholique, with Jake Basil & Desiree Jonnasson (10 minutes): The Future of Lutsel K'e Dene

## **LKDFN ISSUES WITH TALSTON HYDRO EXPANSION**

- 1 THE PROPOSED TRANSMISSION LINE CANNOT BE CONSTRUCTED IN DESNEDHE CHE-KACHE AREA (ARTILLERY LAKE TO GREAT SLAVE LAKE).**
- 1 THIS AREA IS OFF LIMITS TO DEVELOPMENT. IT IS THE MOST IMPORTANT SACRED AND CULTURAL SITE OF THE LUTSEL K'E DENE PEOPLE.**
- 1 IMPACTS ON CARIBOU will come FROM INCREASED HUNTING ACCESS.**
- 2 PROPONENT HAS NOT DEMONSTRATED THAT EAST ARM ROUTE IS IN THE PUBLIC INTEREST IN REDUCING GREENHOUSE GAS EMISSIONS ("GREENNESS" UNPROVEN).**
- 3 IMPACTS TO WILDLIFE FROM DEVELOPMENT IN THE DESNESDHE CHE-KACHE AREA ARE UNACCEPTABLE. INDEPTH WILDLIFE STUDIES, EX. MIGRATORY BIRDS ARE MANDATORY.**



This map provides a definition & understanding of where Lutsel K'e's opposition to the proposed routing is located. Desnedhe Che is the mouth of the Lockhart River to Artillery Lake; this is a draft place name project map; the purple line runs the length of the entire river north to Artillery Lake. The Kache-Desnedhe Che area encompasses the Spiritual Gathering Area site on the shores of Great Slave Lake, up the river to the Falls to Artillery Lake. The first permanent federal withdrawal for the area was an Order in Council in 1970. We have outstanding questions surrounding the legal validity of this proposed transmission line routing. We believe this original 1970 withdrawal legally protects the area from precisely what this development intends. This area is historically, culturally and spiritually and ecologically significant, has two federal land withdrawals located within the area. The 1970 withdrawal roughly 8,000sq. km, the withdrawal in 2007 is roughly 33,0000 sq. km. A MOU was signed in 2007 with Parks Canada entering into a formal working relationship with them to create a protected area, Thai Dene Nene. Traditional Knowledge gathered of the area and cultural inventories have revealed a rich area of significance long known to the people of Lutsel K'e.



DIRECTLY THROUGH THE Desnedhe Che-Kache AREA of the East Arm of Great Slave Lake is where the proponent has decided their best routing of transmission line towers should go to the diamond mines. That also happens to be home to two federal land withdrawals (actually three--- 1970, 1997, 2007), a National Park Reserve Protected Area proposal study area, Thai Dene Nene.



**This area is the number one cultural NO-GO ZONE for developments for Lutsel K'e Dene:** The whole length of the Lockhart River is sacred. This area doesn't embody just a few stories story with some symbolic hold, but the very being of the people is woven into their land today, now, this minute. The power of tsa'kui theda is living here in this room, as people speak of her. At the mouth of the Lockhart as at the Tsa Kui Theda, water can be collected; brought back with people to their homes for the vibrancy it brings into the home and healing powers of the land it embodies. Lutsel K'e Dene are impacted by the very thought of this area being developed; causing stress and harm to them everyday that they are met with the challenges of having to defend its continued sanctity into the future. The continued desire for industry to develop the area, lobbied through the government, through this EA process, is seen as a highest form of disrespect.







The entire area is off limits. Our technical letter dated Dec. 15<sup>th</sup> gives understanding & depth to a historical chronology that is but a small window to the message Lutsel K'e Dene have repeated for 40 years that this area is off limits to development of any kind. An illustration: Regional Power feasibility studies for a run of the river hydro development at Glacier Creek were undertaken in the early part of the last decade. These studies were not plans directly for the Lockhart, but would've diverted some water from it. The benefits of a project were discussed at length by the entire community with many meetings and full-member assemblies. In the end, the answer was a resounding NO in early 2005. The development would be too close to the Lockhart River. The area too sacred and of too high of value spiritually to be resourced.

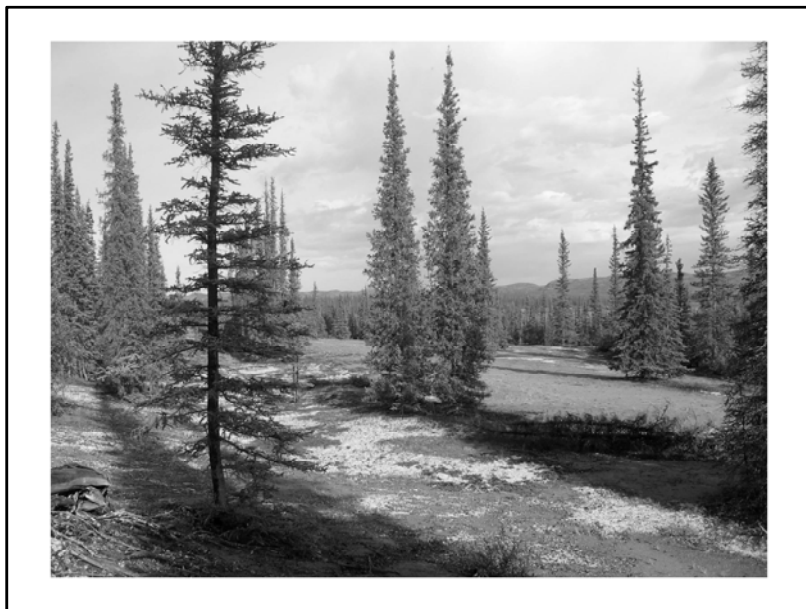


The Lutsel K'e people are woven into their land.

### **CARIBOU IMPACT: WINTER ROAD ACCESS**

- The proponent is planning a winter road to Nonacho Lake. This will create road access to this area from Fort Smith and Alberta (Ft. Chipewyan, Ft. MacMurray).
- Ahiak herd is in decline by 60%, according to the last 4 yrs of GNWT caribou survey results. Bathurst, Beverly and other herds known to overwinter in the area of proposed winter roads are in dire decline.
- Proponent says they will control access to the winter road. However, according to INAC and industry sources, access cannot be legally barred on winter roads, (ex. Tibbitt to Contwoyto Winter Road).

**PROJECT WILL INCREASE HUNTING PRESSURES ON AHIK HERD THROUGH THE CREATION OF NEW ROAD ACCESS AS A PRODUCT OF THE TALSTON HYDRO EXPANSION. YET AT THE SAME TIME, WE ARE IN A MOMENT IN HISTORY WHERE WE HAVE THE SCIENTIFIC DATA AND MEANS TO COLLECT THAT DATA WHICH PROVE ALL THE CARIBOU HERDS OF THE NWT ARE IN DESPERATE DECLINE.**



### **CARBON FOOTPRINT**

- Proponent suggests this project will reduce carbon dioxide emissions (by replacing diesel-generated power by hydropower) from levels current at the diamond mines. There is no evidence to prove this on the Public Record.
- Some facts are contrary to the proponent's assertions:
  - No reduction on fleet fuel load.
  - Increase in fuel load for heating
  - Carbon footprint of project construction and induced developments
- MVEIRB must require the proponent to do a full carbon costing (status quo vs. with project). If no significant reduction in carbon emissions, no "green" argument for the project.

Proponent suggests carbon dioxide emissions will be less. Proof that the carbon footprint will be currently less than what is already in existence and what will be induced for a source of power at the mines needs to be demonstrated. Facts: Mines will continue to need diesel fuel to heat and run transportation, trucks, as well as backup diesel generators---- a transmission line will extend the life of the mines and promote new mines. Mines currently use waste heat off of the diesel generators. Thus they will need a new heating source to replace the loss. For heating at the mine site, use of fuel for heating costs will actually increase. MVEIRB must require ecological, carbon footprint analysis and scrutiny completed on hydro expansion. This includes the construction of the expansion and power lines to the potential customers. *In the day and age of Copenhagen and the now emphasis that the GNWT has placed on these talks by attending the climate change agreements, no EA process for a project of this magnitude should be complete without it.*



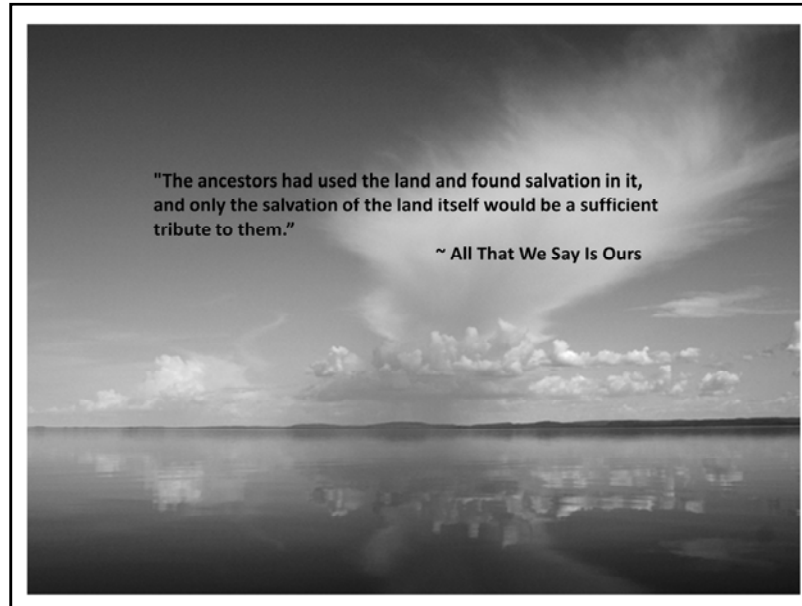
**LUTSEL K' E DENE FIRST NATIONS  
DIRECTIVES:**

- ☐ NO DEVELOPMENT IN THE Desnedhe Che-KACHE AREA.
- ☐ ROAD ACCESS TO CARIBOU WILL DEGRADE THE HERDS; DECISIONS BY THE BOARD REQUIRE PRECEDENT SETTING ACTION ON CARIBOU.
- ☐ FURTHER WILDLIFE STUDIES ARE MANDATORY FOR THE Desnedhe Che-KACHE AREA.
- ☐ CARBON FOOTPRINT ANALYSIS MANDATORY.



Ts'akui Theda. Desnedhe Che is a sacred area from Artillery Lake to the Great Slave Lake. It is the most important culturally significant and most sacred area to the Denesoline. The Lutsel K'e Spiritual gathering is held every year on the shores of Great Slave Lake in this area, the walk to the Old Lady of the Falls is done by those needing healing and rejuvenation, others will travel to this site when the spirit or the creator deems them to, which is itself, a personal and intimate journey taken by personal, family or faith-based inspiration. Lutsel K'e will never stray from protecting this area from time immemorial. The old lady is not to be disturbed until the end of time. This area cannot be violated with development from any source especially of a kind purely motivated by neither necessity nor humanitarian progress.





"The ancestors had used the land and found salvation in it,  
and only the salvation of the land itself would be a sufficient  
tribute to them."

~ All That We Say Is Ours