



## **FORTUNE MINERALS LIMITED**

140 Fullarton St., Suite 1902, London, ON Canada N6A 5P2  
Tel.: (519) 858-8188 Fax: (519) 858-8155

January 15, 2009

Violet Camsell-Blondin, Chair  
Wek'èezhii Land and Water Board  
Box 32, Wekweèti, Northwest Territories  
X0E 1W0

**Re: Community Consultation Records in Support of Updated Application for Type A Water License and Type A Land Use Permit for the NICO Cobalt-Gold-Bismuth Project**

Dear Ms. Camsell-Blondin:

Fortune Minerals Limited (Fortune) is pleased to submit the community consultation records in support of the updated applications for a Type A Water License and a Type A Land Use Permit to the Wek'èezhii Land and Water Board (WLWB) for the NICO Cobalt-Gold-Bismuth Project. The community consultation advertisements and subsequent meetings were designed to meet the "Guide to Pre-Submission Engagement Requirements" issued by the WLWB.

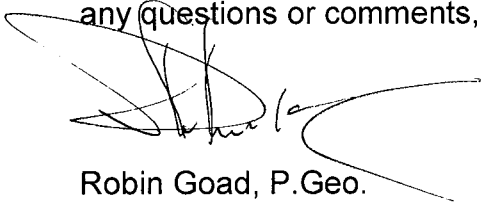
The presentation given at the meetings provided information on the applications for the mine (already submitted), the access road (in preparation) and the land use permit for the exploration program (to be submitted later this month). The objective of the presentation was to provide the Tìychq̄ people with our most current plans for mine development and supporting activities.

These information sessions were scheduled to take place in Whatì, Gamètì, Wekweèti, Behchok̄ and Yellowknife. Fortune's first attempt at completing the consultation was from November 12-15<sup>th</sup>, 2008. Meetings were only held in the communities of Gamètì and Yellowknife due to poor weather conditions in Whatì and an incident in Behchok̄ that deeply affected both this community and Wekweèti.

The second round of community consultation took place during the week of January 5<sup>th</sup>, 2009. Successful meetings were held in both Whatì and Behchok̄. Fortune also had a meeting scheduled in Wekweèti that was arranged and advertised in compliance with regulatory requirements. However, this meeting had to be postponed due to a formal request from the community because of a

lack of people in the community on that date. Fortune will be in Wekweètì in February 2009 conducting interviews for the Traditional Ecological Knowledge and socio-economic studies in anticipation of the environmental assessment. A meeting with community members will be attempted at that time.

We trust that these community consultation records will meet your needs and we look forward to working with the board during the permitting process. If you have any questions or comments, please contact the undersigned.

A handwritten signature in black ink, appearing to read 'Robin Goad', with a large, sweeping flourish extending to the right.

Robin Goad, P. Geo.  
President, Fortune Minerals

RS/JK

**NWT Community Consultation Meetings**  
**Community Contacts**

**Behchoko**

|                | <b>Contact</b>                  | <b>Telephone</b> |
|----------------|---------------------------------|------------------|
| Culture Centre | Harriett Erasmus                | 867-392-6385     |
| Food           | Mary Jane Lafferty              | 867-392-6098     |
| Interpreter    | Violet Mackenzie                | 867-392-6676     |
| Sound system   | David Gon – Dziga Audio Service | 867-392-6222     |

**Gameti**

|                | <b>Contact</b>                  | <b>Telephone</b> |
|----------------|---------------------------------|------------------|
| Community Hall | Terri                           | 867-997-3441     |
| Food           | Arranged by Terri               | 867-997-3441     |
| Accommodation  | Gameti Motel Rae Lakes          | 867-997-3031     |
| Interpreter    | Mary Adel Wetrade               | 867-997-3310     |
| Sound system   | David Gon – Dziga Audio Service | 867-392-6222     |

**Wekweeti**

|                       | <b>Contact</b>                            | <b>Telephone</b> |
|-----------------------|---|------------------|
| Learning Centre       | Adeline Football                          | 867-713-2511     |
| Food (stew & bannock) | Adeline Football                          | 867-713-2511     |
| Accommodation         | Wekweeti (Snare Lake) Hotel               | 867-713-2700     |
| Interpreter           | Nick Lamouelle, contacted by Tlichu Gov't | 867-713-2534     |
| Sound system          | David Gon - Dziga Audio Service           | 867-392-6222     |

**Whati**

|                | <b>Contact</b>                  | <b>Telephone</b>     |
|----------------|---------------------------------|----------------------|
| Culture Centre | Suzanne                         | 867-573-3401         |
| Food           | Lena or Georgina Simpson        | Arranged via Suzanne |
| Accommodation  | Sally – Lakeview Lodge          | 867-573-3241         |
| Interpreter    | Johnny Simpson                  | 867-573-3110         |
| Sound system   | David Gon - Dziga Audio Service | 867-392-6222         |

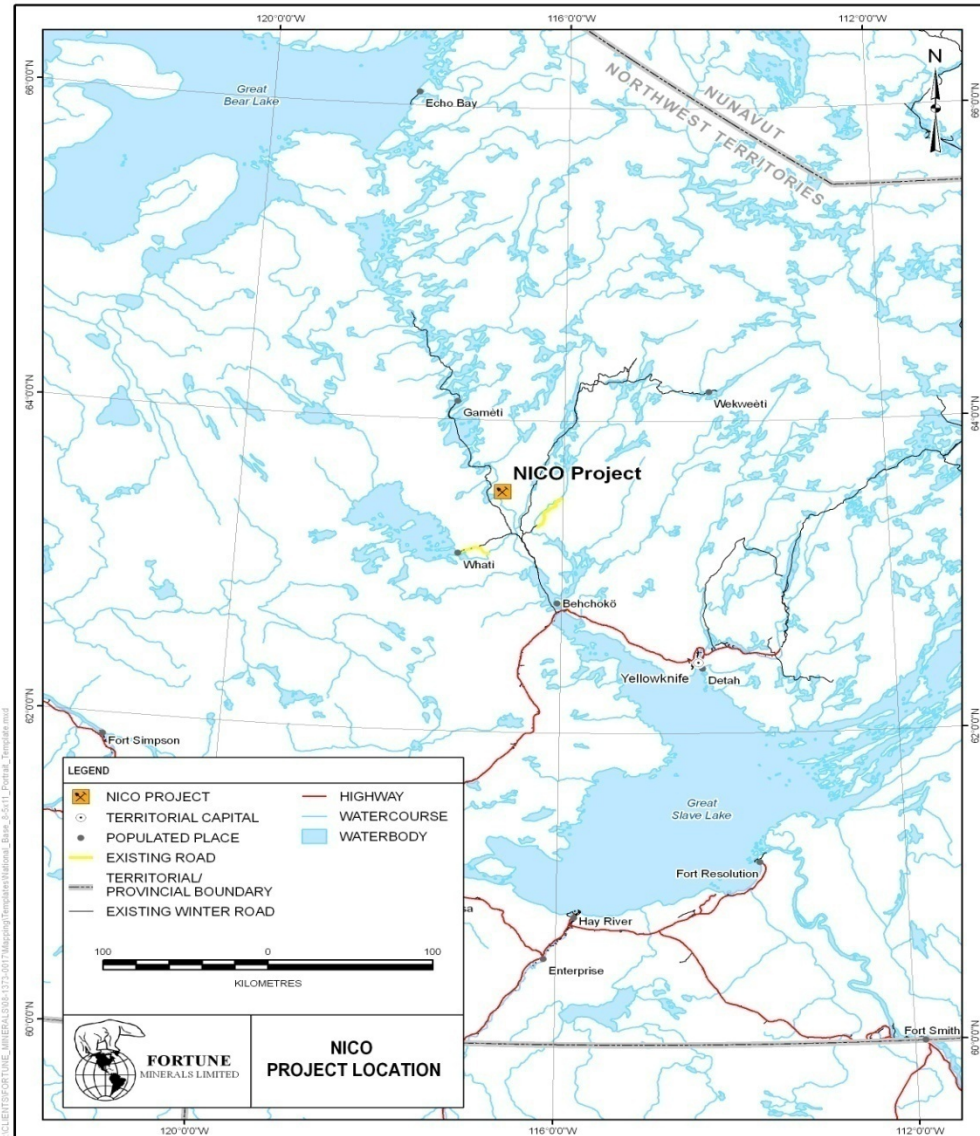
**Yellowknife**

|                           | <b>Contact</b>                  | <b>Telephone</b> |
|---------------------------|---------------------------------|------------------|
| Yellowknife United Church | Gwyneth Davis                   | 867-873-6291     |
| Sound system              | David Gon - Dziga Audio Service | 867-392-6222     |



# FORTUNE MINERALS LIMITED

[www.fortuneminerals.com](http://www.fortuneminerals.com)

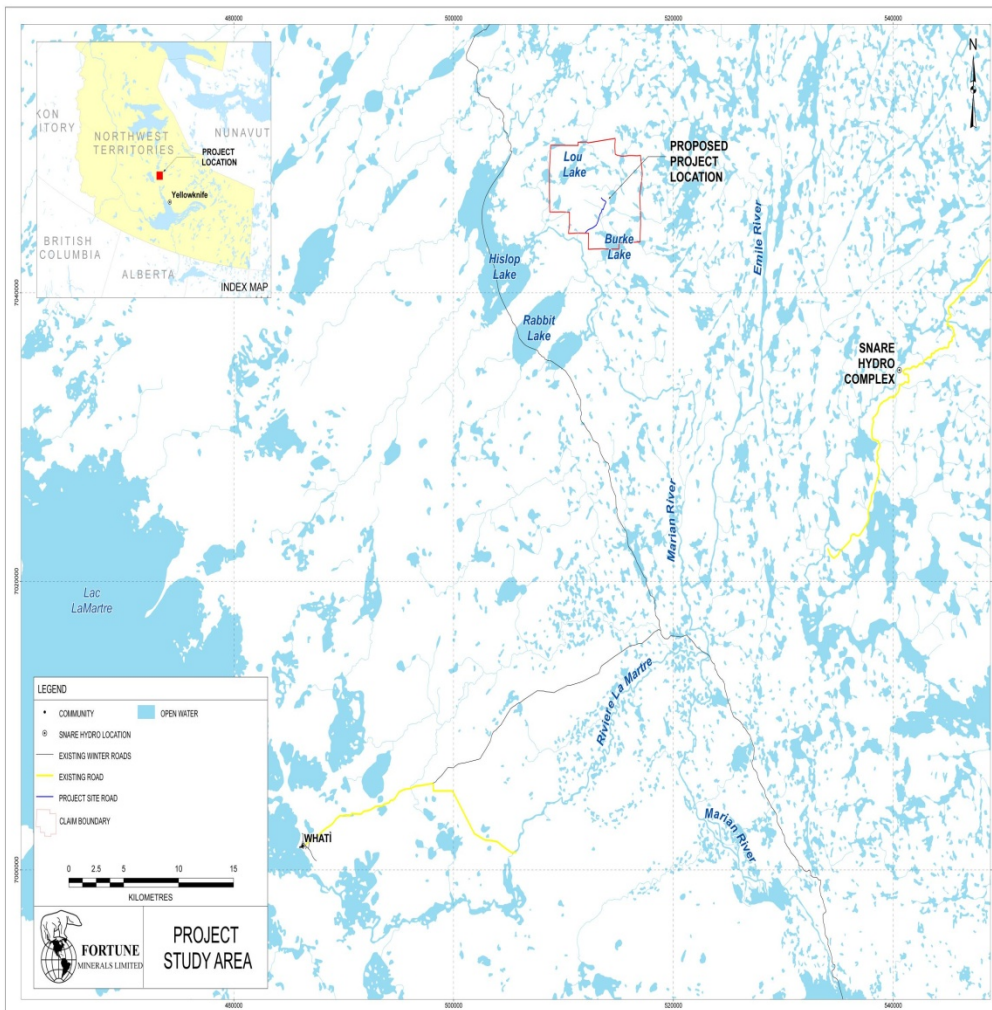




# FORTUNE MINERALS LIMITED

www.fortuneminerals.com

## NICO LEASES & CURRENT INFRASTRUCTURE



- ❖ NICO mining leases total 5,140 Hectares
- ❖ Mining leases owned 100% by Fortune
- ❖ Only NICO project being permitted at this time
- ❖ Current winter road access
- ❖ Existing & planned infrastructure will facilitate development



7060000

7060000

7045000

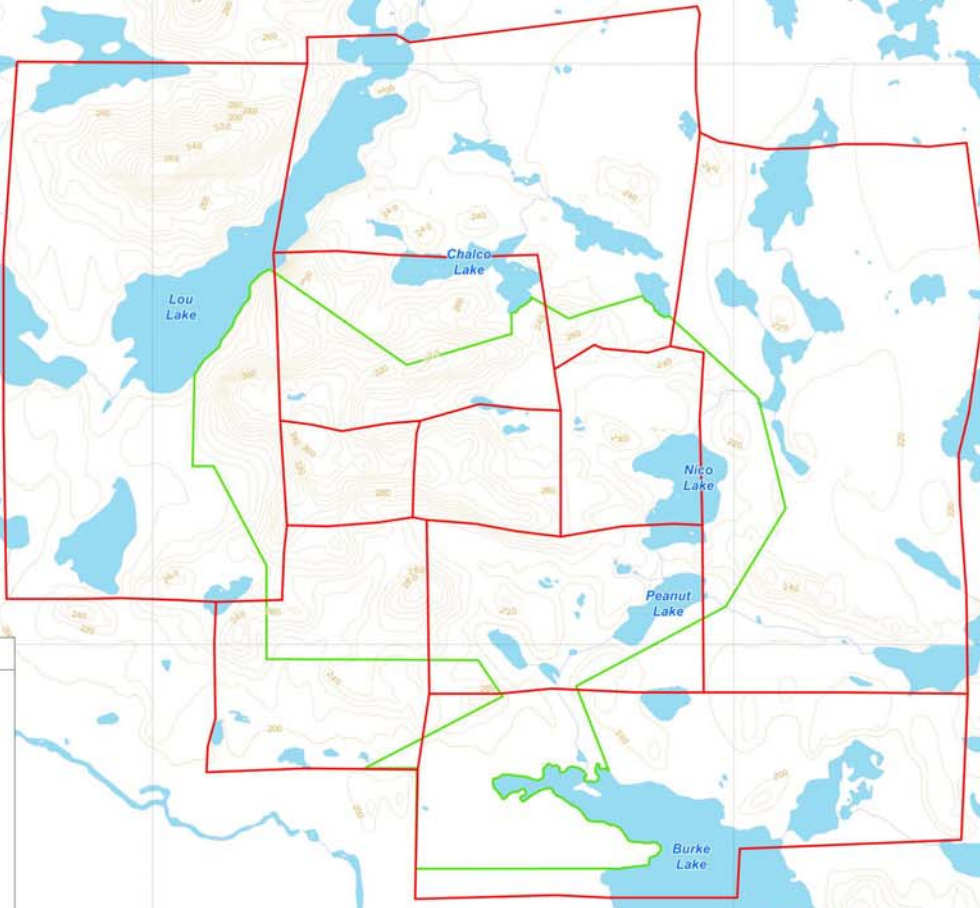
7045000

505000

510000

515000

520000



**LEGEND**

- CONTOURS - 10 METRES
- OPEN WATER
- LAND USE (LEASE) BOUNDARY
- CLAIM BOUNDARY

0 0.5 1 2 3  
KILOMETRES



**FORTUNE**  
MINERALS LIMITED

**NICO**  
CLAIM BOUNDARIES



## NICO PROJECT PERMITTING STATUS

- ❖ The NICO project will require two key elements to be permitted in order for the Project to proceed to production:
  - Mine site
  - All-weather access road (applications not submitted at this time)
- ❖ Original applications for the permitting of the project were submitted late last year
- ❖ Updated applications for the permitting of the mine have been submitted to the Wek'èezhìi Land and Water Board and the Tłìchò government
- ❖ Production targeted in late 2011
- ❖ **Support of the Tłìchò people will be required in order for the Project to proceed to production**



# FORTUNE MINERALS LIMITED

[www.fortuneminerals.com](http://www.fortuneminerals.com)

## NICO PROJECT SUMMARY – THE MINE

- ❖ 15 year mine life proposed
- ❖ Ore reserve of 21.8 million tonnes
  - ❖ 61 million pounds cobalt
  - ❖ 760 thousand ounces gold
  - ❖ 77 million pounds bismuth
- ❖ Potential for additional resources to extend mine life
- ❖ Production: 4,650 tonnes/day (1.7 million tonnes/year)
- ❖ Mining would be a combination of open pit & underground methods
- ❖ Open pit and underground mine years 1 & 2
- ❖ Open pit mine years 3 – 15
- ❖ Conventional truck & shovel







# FORTUNE MINERALS LIMITED

[www.fortuneminerals.com](http://www.fortuneminerals.com)

## NICO PROJECT - EMPLOYMENT

- ❖ Local employment opportunity for people from Behchokq, Whatì, Gamètì, Wekweètì & Yellowknife
- ❖ The camp will have capacity for approximately 150 people during normal operations and approximately 600 people during construction
- ❖ A workforce of 225 people is expected to be hired for the overall mining operation at NICO
- ❖ Work rotations are currently planned to be 4, 5 or 7 day periods
- ❖ Buses will be available to transport employees to and from the site from Yellowknife and local communities
- ❖ An airport will be maintained at Burke Lake for charter transport
- ❖ Training for specific jobs will be provided
- ❖ Details on training and jobs will be laid out in the IBA
- ❖ Fortune would like to start IBA negotiations in the near future



## TLICHO BUSINESS OPPORTUNITIES

### MAJOR TLICHO SUPPLIERS TO FORTUNE INCLUDE:

- ❖ KeTe Whii Procon
- ❖ Tłichq Power
- ❖ Tłichq Explosives
- ❖ Tłichq Air
- ❖ Behcho Ko Development Corp
- ❖ Tłichq Landtran
- ❖ Tłichq Logistics



# FORTUNE MINERALS LIMITED

[www.fortuneminerals.com](http://www.fortuneminerals.com)

## Site 7 Power Dam Development

- ❖ Fortune, NTPC & Tłıchq Power are working together to accelerate Site 7 power dam development at Indin Lake and /or Whatı̀
- ❖ Business opportunity for Tłıchq & GNWT
  - Reliable source of clean, low-cost power for NICO Project
  - Promote local economic growth
  - Behchoko Development Corp. has completed a feasibility study for Site 7





## COBALT - What is it Used For?

- ❖ High strength alloys, and cutting tools
- ❖ Magnets
- ❖ Rechargeable batteries (computers, cell phones, tools, toys, hybrid-electric vehicles)
- ❖ Vitamin B12





## BISMUTH – What is it Used For?

- ❖ Cosmetics, chemicals, ointments, medicines, and lubricants
- ❖ Electronics and flame retardants (cooling computer chips more effectively)
- ❖ Replacing lead for solder (plumbing & electronics, ceramic glazes, ammunition)
- ❖ Free cutting steel





## NICO PROPOSED MINE SITE COMPONENTS

- ❖ Open pit & underground operations;
- ❖ Mill and processing facilities;
- ❖ Tailing & rock management areas;
- ❖ Camp site for 600 people during construction & 150 during operations;
- ❖ Waste management facilities
- ❖ Water and sewage treatment plants;
- ❖ Roads within the mine site;
- ❖ Diesel generators for power
- ❖ Airstrip; and,
- ❖ An access road.





# FORTUNE MINERALS LIMITED

[www.fortuneminerals.com](http://www.fortuneminerals.com)

## GOLDEN GIANT - HEMLO MILL PURCHASE

- ❖ Fortune purchased Golden Giant process plant facilities, equipment and inventory for relocation to NICO project site
- ❖ Hemlo dismantling is well underway at this time



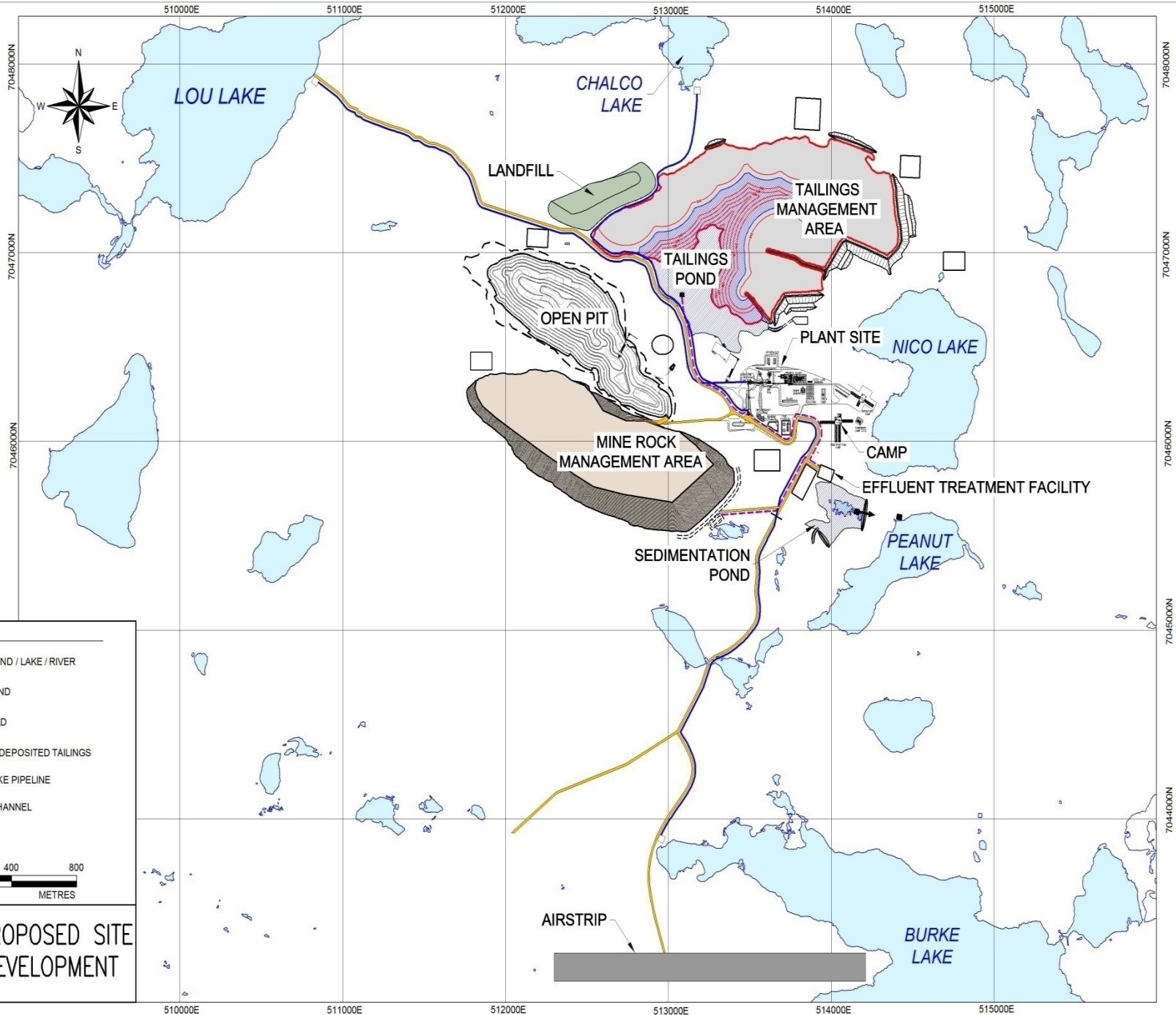


## NICO PROJECT – UNDERGROUND TEST MINING

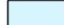








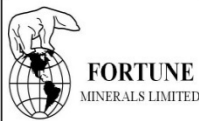
- ❖ Feasibility study completed in 2007
- ❖ Underground test mining programs completed
- ❖ Mining conditions, grades & ore location confirmed
- ❖ Sample collected for larger pilot plant test in 2007/2008
- ❖ Results demonstrate the viability of the project
- ❖ Underground pre-production development largely complete which will speed up mine development





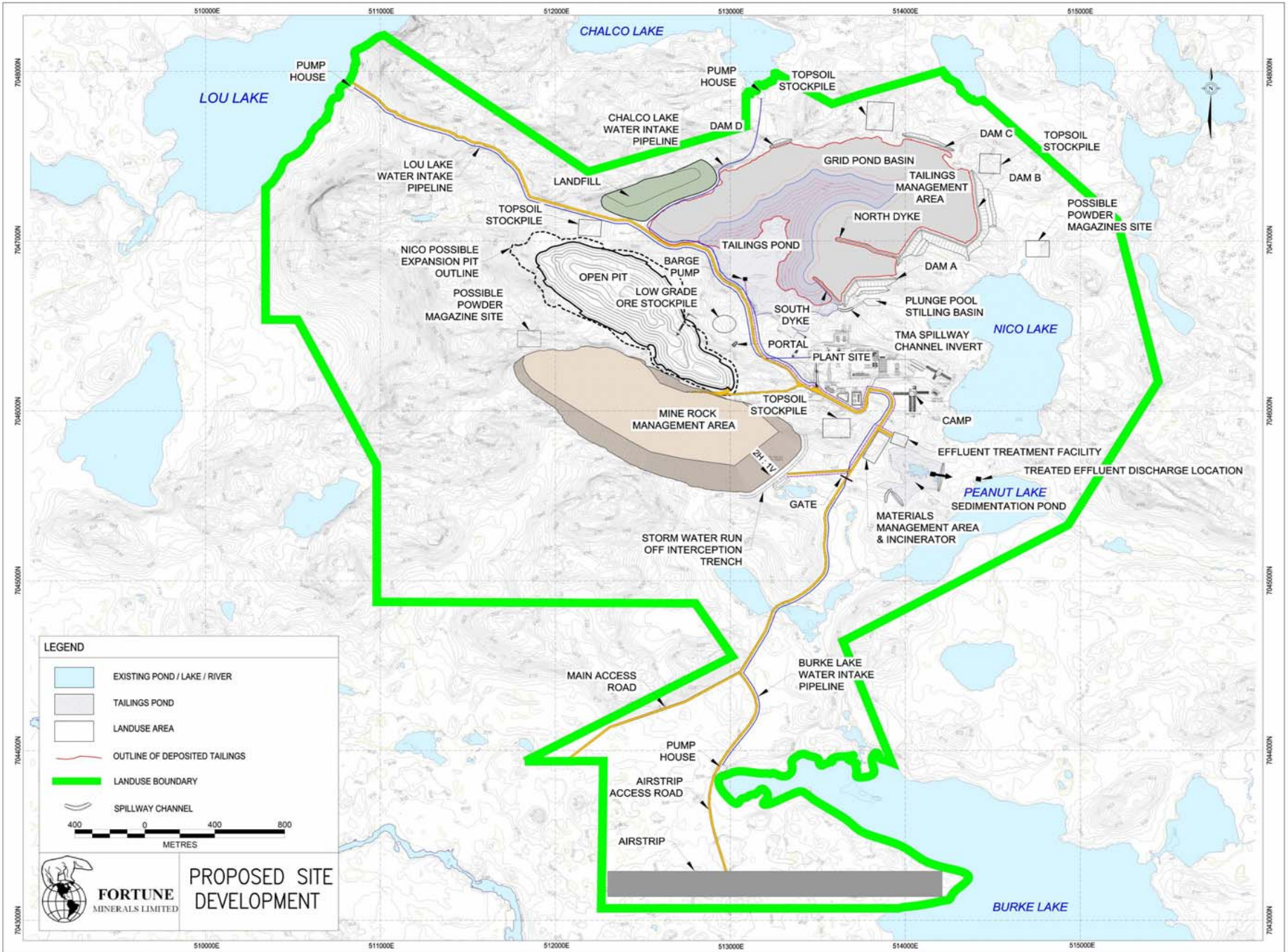
**LEGEND:**

-  EXISTING POND / LAKE / RIVER
-  TAILINGS POND
-  ACCESS ROAD
-  OUTLINE OF DEPOSITED TAILINGS
-  WATER INTAKE PIPELINE
-  SPILLWAY CHANNEL
-  DAM / DYKE



**PROPOSED SITE DEVELOPMENT**






**LEGEND**

- EXISTING POND / LAKE / RIVER
- TAILINGS POND
- LANDUSE AREA
- OUTLINE OF DEPOSITED TAILINGS
- LANDUSE BOUNDARY
- SPILLWAY CHANNEL

400 0 400 800  
METRES

 **FORTUNE**  
MINERALS LIMITED

**PROPOSED SITE DEVELOPMENT**



# FORTUNE MINERALS LIMITED

[www.fortuneminerals.com](http://www.fortuneminerals.com)

## NICO PROJECT SITE AIRSTRIP



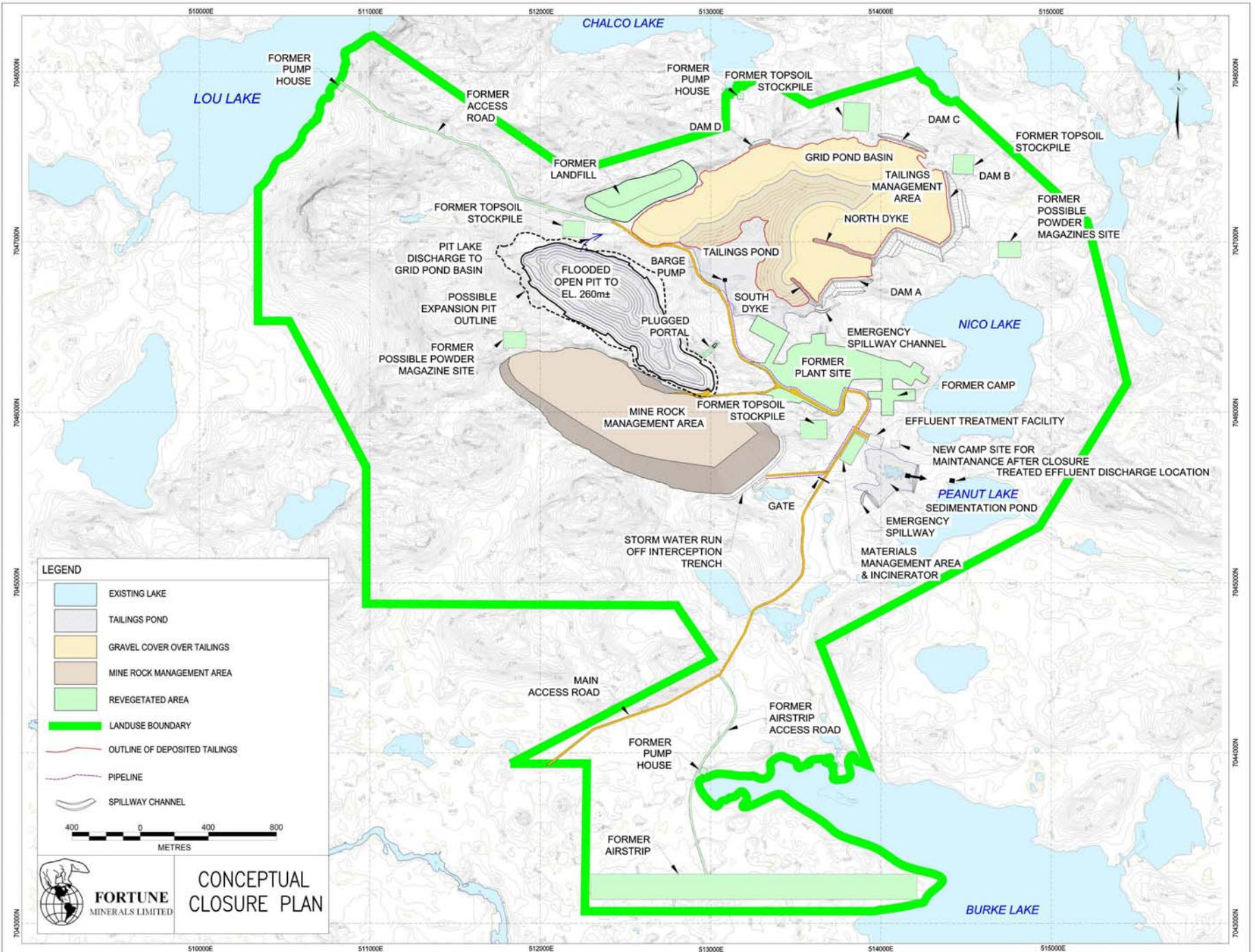
- ❖ An airstrip at the NICO project site will be constructed to provide alternate access to the site for the movement of people and equipment.
- ❖ The airstrip is proposed to be built near Burke Lake due to the presence flat ground and proximity to mine site.
- ❖ The strip will measure 6,000 feet long and 175 feet wide.



## NICO MINE CLOSURE

- ❖ Closure of tailings managements area will focus on reducing risk of wind and water erosion
- ❖ 0.5 thick gravel cover
- ❖ Open pit will have a safety barrier and warning signs
- ❖ Mine openings will be closed
- ❖ Mine infrastructure will be removed and ground surface will be re-contoured to promote re-vegetation
- ❖ Water quality and other environmental components will be monitored





**LEGEND**

- EXISTING LAKE
  - TAILINGS POND
  - GRAVEL COVER OVER TAILINGS
  - MINE ROCK MANAGEMENT AREA
  - REVEGETATED AREA
  - LANDUSE BOUNDARY
  - OUTLINE OF DEPOSITED TAILINGS
  - PIPELINE
  - SPILLWAY CHANNEL
- 400 0 400 800  
METRES

CONCEPTUAL  
CLOSURE PLAN

FORTUNE MINERALS LIMITED



# FORTUNE MINERALS LIMITED

[www.fortuneminerals.com](http://www.fortuneminerals.com)

## 1998-2008 ENVIRONMENTAL STUDIES



- ❖ Fish & wildlife biology
- ❖ Water/sediment quality
- ❖ Soils & vegetation mapping
- ❖ Groundwater & rock geochemistry
- ❖ Hydrology & wetlands assessments
- ❖ Meteorology & air quality
- ❖ Noise
- ❖ Archaeology
- ❖ Community consultation

Tłıchq participated in collection of data

**Fortune is committed to principles of sustainable development & shares the Tłıchq & public concern for responsible development**



## Traditional Ecological Knowledge

TEK is an important part of the information needed to understand the potential effects of a project on the environment

A TEK study normally involves:

- ❖ Meeting with the community to determine the best way to gather TEK in that community
- ❖ Interviews and mapping sessions with elders about their knowledge of the land, wildlife, vegetation, and culturally important sites in the Project area
- ❖ Site visit to collect additional information
- ❖ Community review of information collected during the study
- ❖ TK study should start ASAP

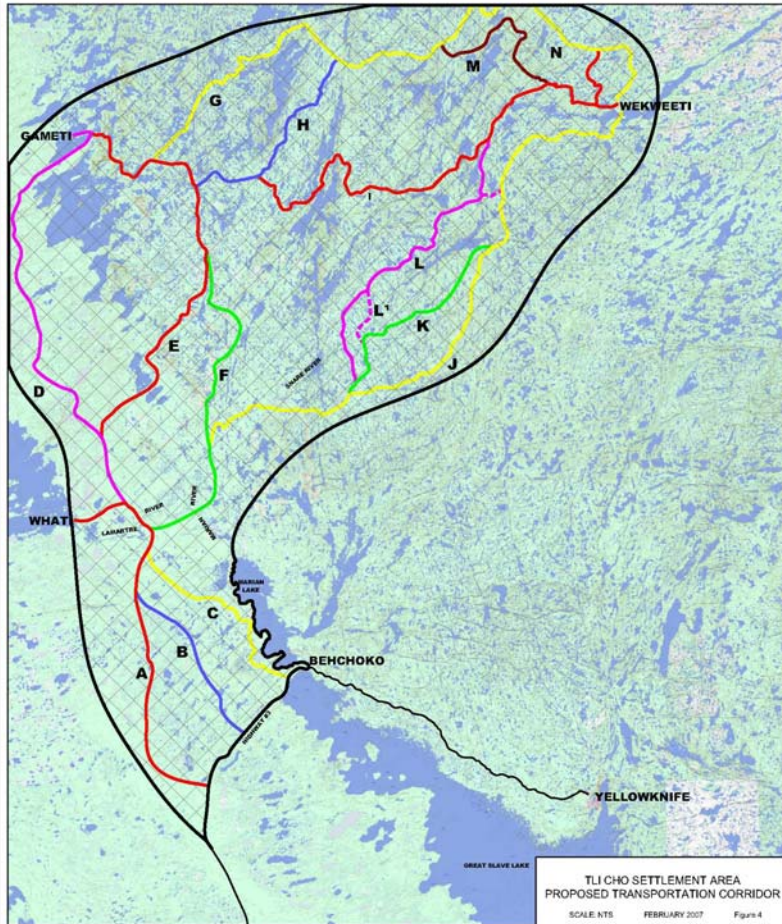




# FORTUNE MINERALS LIMITED

www.fortuneminerals.com

## TLI CHO/GNWT ROAD INITIATIVE



- ❖ All-weather public road proposed by the GNWT and Tłıchǫ to connect Whatı, Gamèti and Wekweèti to Behchokǫ
- ❖ Final route has been ratified and is route C through consultation process
- ❖ GNWT has completed socio-economic, preliminary route & environmental scoping studies and is moving ahead with presenting their findings to the Tłıchǫ Government
- ❖ Road would improve access and quality of life in communities & economic growth in Tłıchǫ territory
- ❖ Fortune is a third-party in Tłıchǫ /GNWT consultation process and **the NICO project cannot exist on a separate basis from the development of the public road.**





# FORTUNE MINERALS LIMITED

[www.fortuneminerals.com](http://www.fortuneminerals.com)

## NICO ALL-WEATHER ACCESS ROAD INITIATIVE



- ❖ Fortune requires that a public road access to Whatì be developed by either the GNWT -Transportation and/or the Tłıchq government within the NICO's Project timeframe
- ❖ Road to NICO could be used to develop a permanent access to Gamètì
- ❖ Fortune agrees to cede its land use & water licenses, infrastructure and other material rights to either government as necessary for an all-weather public road
- ❖ **Fortune recognizes that approval is subject to successful negotiation of an Access Agreement with the sovereign Tłıchq government.**

❖ Fortune proposes a 51 km long all-weather access road between Whatì & NICO Project site.

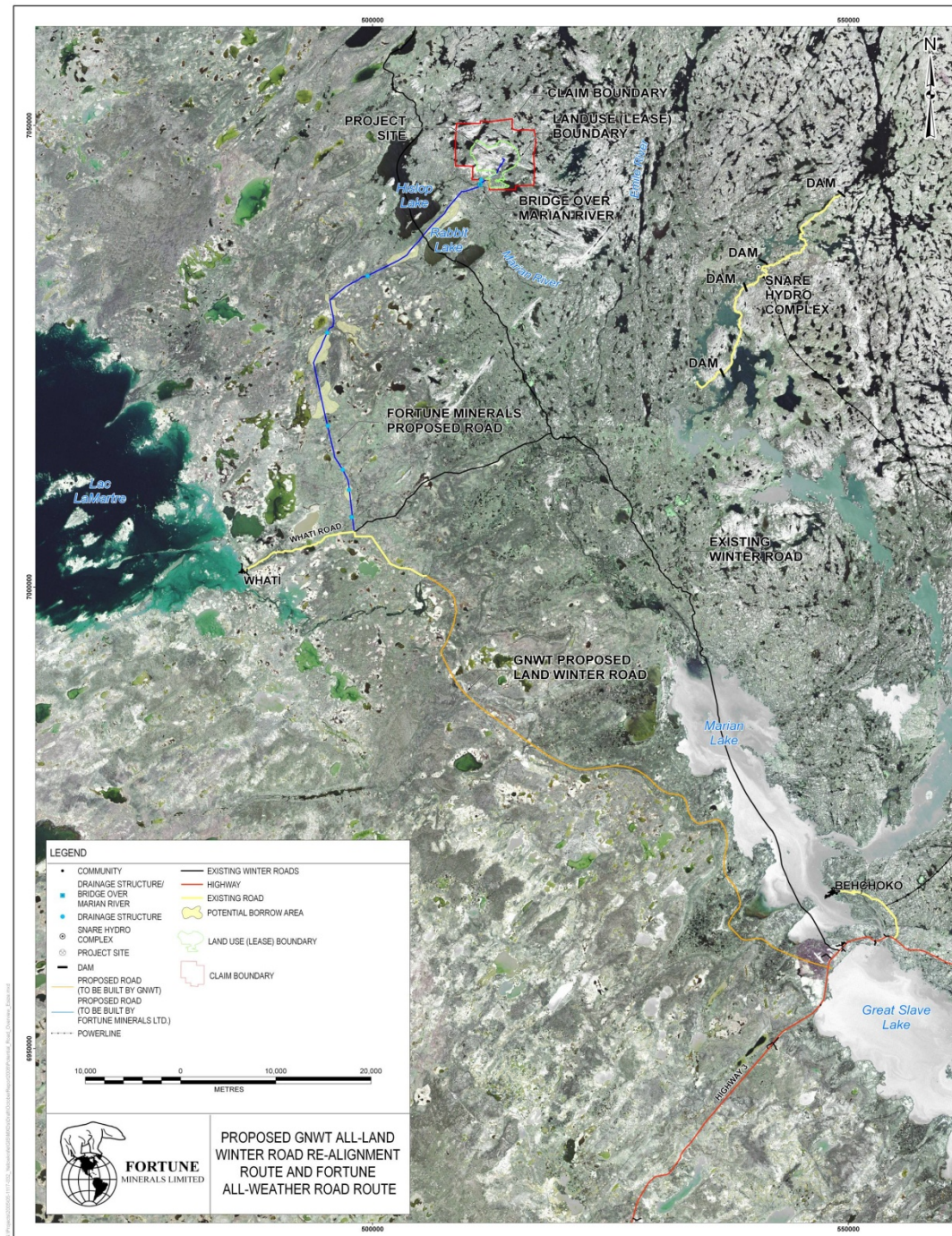
❖ The road use area would extend 30 m on either side of the centre line.

❖ The road would be 6 m wide with a gravel surface

❖ Fortune would use the current winter road alignment and upgrade it to an all-weather road.

❖ Construction materials will be taken from local sources.

❖ Numerous baseline environmental studies already completed for the road.





## NICO ALL-WEATHER ACCESS ROAD BRIDGE

- ❖ Fortune had a route evaluation completed and two main routes with three alternate crossings of the Marian River were considered.
- ❖ The selected route was chosen based on terrain, permafrost and crossing requirements.
- ❖ Nine crossings (1 major) were identified.
- ❖ A bridge across the Marian River (15 m wide) where it passes along outcropping bedrock will be needed.
- ❖ The proposed bridge will be built of pre-fabricated steel girders.





**FORTUNE**  
MINERALS LIMITED

**MASI CHO – THANK YOU**

January 7, 2009  
Sign In What?

Please Print Name or Sign

1. Lane Yelavich
2. Georgia Simpson
3. Georgia Beaulieu
4. Lucy ~~Beaulieu~~ Romie
5. Johnny Simpson
6. Michael Romie
7. Calvin Romie
8. Dominic GROSCO
9. Archie Beaver Ho
10. ~~Andrew Samuel~~
11. Francis Zee
12. ~~Lucy~~
13. Charlie Quetta
14. Tom Nitija
15. Charlie Simpson
16. Jimmy NITIZIA
17. Karan Bernice Nitija
18. Francis Simpson
19. ~~Marissa Bohorzon~~
19. North Bishop

January 6, 2009

Sign in Behchoko

1. Charlie. Tattini
2. Leon Lafferty
3. Terry Testant
4. Robert Bilek
5. Sohn N. Rae-Edra Behchoko
6. ~~Ellen E...~~ Behchoko
7. James Rabesca Bedesko
8. Phillip Husky Bedesko
- 8 Sam Mackenzie
- 9 Francis Adam Rabesca Behchoko
- 10 Francis Mackenzie Behchoko
- 11 John J Mantha Bedesko
- 12 Janos Mantha Behchoko
- 13 Michael Camille Behchoko
- 14 Norman Mackenzie " " "
- 15 Joe Wedgin Behchoko
- 16
- 17
- 18
- 19
- 20

November 15, 2008 Yellowknife

Sign In

Eitan deLettor

CLAUDIO APDILETS

Michael Ward

Kelly Mahoney

Lou Canullo

mark Cliffe-Phillips

Sign In Book  
November 13, 2008 Gameti

Marie de Wettrade  
Patsy Wettrade -

Maed Monte ✓

Joanna Chocolate

Roger Drybones

Ronie Wettrade - ✓

Joelle Moses

Therese Amunson

Ronie Wettrade

Edward Wilfong

School Appled

Sara Mattia

Eddie Chocolate

Eileen Mantle - interested in environmental work





**FORTUNE**  
**MINERALS LIMITED**

**You are invited to learn more about**

**Fortune Minerals Ltd.  
NICO Project mine application**

**In Gameti  
November 13, 2008  
7 p.m. Community Hall**

for more information: contact  
Patrick Moloney (519) 858 8188

Faxed to:

|                           |                                    |
|---------------------------|------------------------------------|
| Gameti Health Care Centre | 867 997 3045 11/3, fax failed 11/5 |
| Gameti Tli Cho Nation     | 867 997 3442 11/3, no answer 11/5  |
| NWT Power Corp            | 867 997 3960 11/3, no answer 11/5  |
| Rae Lakes General Store   | 867 997 3013 11/3, 10:20 a.m. 11/5 |
| Jean Wetrade School       | 867 997 3084 11/3, 10:22 a.m. 11/5 |

## FIRST NATION VISITS

### Gameti Notes – Nov 13/08

- We can't eat the fish now.
  - CC – Those were different mines, uranium, coal.
  - RS – You have to put that money up front for after mine closure.
- You should get people from each community and take them to the mine.
- Mines always say they won't poison the streams, but they do.
  - RS – best thing is to have Tlicho people do water testing.
- After 15 years what will happen to the waste water?
  - RS – We will have to stay there, treat the water and test the water until we can prove it is safe. Remember there is a lot of natural arsenic in the ground and water. It is even higher since the fire. We are testing it to see how much it has increased since the fire and how much it has resolved itself naturally.
- Could animals die from drinking from the tailings?
  - RS – the level is just above guideline so an animal wouldn't get sick unless it drank there every day. A fence around the tailings pond isn't necessarily a good thing. What people have seen are wolves chasing caribou into the fence. The only real danger of tailings is if water seeps out. No danger to birds either.
- What about the open pit?
  - RS – That's what we want to discuss with people. Is a fence a good thing or a bad thing? We have 15 years to decide, learn from other mine closures.
- When are you coming back to do traditional knowledge?
  - RS – We want to come back in Jan/Feb.



**FORTUNE**  
**MINERALS LIMITED**

**You are invited to learn more about**

**Fortune Minerals Ltd.  
NICO Project mine application**

**In Yellowknife  
November 15, 2008  
7 p.m. Room 205 Northern United Place**

for more information: contact  
Patrick Moloney (519) 858 8188

Faxed to:

|                             |  |
|-----------------------------|--|
| A1 Financing & Loans        | 867 669 7208, 10:04 a.m. 11/4, 10:24 a.m. 11/5 |
| A Taste of Saigon           | 867 873 9776, 10:06 a.m. 11/4, 10:27 a.m. 11/5 |
| A to Z Distribution         | 867 920 4359, number not in service            |
| A & A Technical             | 867 669 7077, 10:08 a.m. 11/4, 10:29 a.m. 11/5 |
| AD Williams Engineering     | 867 873 2547, 10:09 a.m. 11.4, 10:30 a.m. 11/5 |
| Aboriginal Diamonds Group   | 867 920-2877, 10:11 a.m. 11/4, 10:32 a.m. 11/5 |
| Aboriginal Engineering Ltd. | 867 669 9482, 10:12 a.m. 11/4, 10:35 a.m. 11/5 |
| Aboriginal Peoples TV       | 867 873 3786, 10:13 a.m. 11/4, 10:36 a.m. 11/5 |
| Aboriginal Summit           | 867 669 7950, number not in service            |
| Academy of Learning         | 867 920 2253, 10:15 a.m. 11/4, 10:38 a.m. 11/5 |
| Ace Enterprises Ltd.        | 867 873 6572, 10:18 a.m. 11/4, 10:40 a.m. 11/5 |
| Acklands-Grainger Inc.      | 867 873 4106, 10:20 a.m. 11/4, 10:46 a.m. 11/5 |
| Adam Dental Clinic          | 867 920 2775, 10:21 a.m. 11/4, 10:49 a.m. 11/5 |
| Adco North Ltd.             | 867 873 5557, 10:27 a.m. 11/4, 10:51 a.m. 11/5 |
| Adlair Aviation Ltd.        | 867 873 6659, 10:28 a.m. 11/4, 10:52 a.m. 11/5 |
| Air Tindi                   | 867 669 8210, 10:29 a.m. 11/4, 10:55 a.m. 11/5 |
| Akaitcho Business Dev Corp  | 867 920 0363, 10:32 a.m. 11/4, 10:57 a.m. 11/5 |
| Arctic Insurance Brokers    | 867 873 6397, 10:33 a.m. 11/4, 10:59 a.m. 11/5 |
| Arctic Office Concepts      | 867 920 7128, no answer                        |
| Arctic Sunwest Charters     | 867 873 9334, line busy, 11:04 a.m. 11/5       |
| Atco Frontec                | 867 669 7371, 10:44 a.m. 11/4, 11:05 a.m. 11/5 |
| Aurora College              | 867 873 0333, 10:45 a.m. 11/4, 11:06 a.m. 11/5 |
| BBE Ltd.                    | 867 766 8651, 10:45 a.m. 11/4, 11:08 a.m. 11/5 |
| BMO Bank                    | 867 873 6621, 10:47 a.m. 11/4, 11:09 a.m. 11/5 |
| Behchoko Dev Corp.          | 867 766 2819, 10:49 a.m. 11/4, 11:11 a.m. 11/5 |
| Dennis Bevington            | 867 920 4233, 10:50 a.m. 11/4, 11:14 a.m. 11/5 |
| Wendy Bisaro, MLA Frame Lk  | 867 873 0276, 10:51 a.m. 11/4, 11:15 a.m. 11/5 |
| Body Works                  | 867 669 7087, 10:52 a.m. 11/4, 11:16 a.m. 11/5 |
| Boston Pizza                | 867 920 2002, 10:53 a.m. 11/4, 11:18 a.m. 11/5 |
| Buffalo Airways             | 867 920 4063, not in service                   |
| Bumper to Bumper            | 867 873 8940, 10:55 a.m. 11/4, 11:28 a.m. 11/5 |
| CBC                         | 867 920-5440, 10:58 a.m. 11/4, 11:29 a.m. 11/5 |
| CJCD Radio                  | 867 920 4033, 11:05 a.m. 11/4, 11:30 a.m. 11/5 |
| CKLB                        | 867 920 4205, 11:07 a.m. 11/4, 11:33 a.m. 11/5 |
| Canadian North              | 867 669 4040, 11:08 a.m. 11/4, 11:35 a.m. 11/5 |
| Centre Square               | 867 873 9835, 11:10 a.m. 11/4, 11:38 a.m. 11/5 |
| NWT Chamber of Commerce     | 867 920 2145, 11:11 a.m. 11/4, 11:47 a.m. 11/5 |
| City of Yellowknife         | 867 920-5649, 11:13 a.m. 11/4, 11:49 a.m. 11/5 |
| Coast Fraser Towers         | 867 873 8708, 11:15 a.m. 11/4, 11:50 a.m. 11/5 |
| Corner Mart                 | 867 920-2009, 11:16 a.m. 11/4, 11:53 a.m. 11/5 |
| Creative Basics             | 867 920 7757, 11:18 a.m. 11/4, 11:55 a.m. 11/5 |
| DeBeers Canada              | 867 766 7347, 11:21 a.m. 11/4, 11:57 a.m. 11/5 |
| Dene Nation                 | 867 920 2254, 11:22 a.m. 11/4, 11:58 a.m. 11/5 |

|                               |                          |                  |      |
|-------------------------------|--------------------------|------------------|------|
| Denendeh Investment Corp      | 867 669 7525, 11:24 a.m. | 11/4, 12:00 p.m. | 11/5 |
| Deton'cho Corp                | 867 873 5308, 11:26 a.m. | 11/4, 12:02 p.m. | 11/5 |
| Diamond Aviation Service      | 867 669 2182, 11:27 a.m. | 11/4, 12:03 p.m. | 11/5 |
| Diamond Placement Serv        | 867 766 2018, 11:28 a.m. | 11/4, 12:05 p.m. | 11/5 |
| Diavik Diamond Mines Inc.     | 867 669 9058, 11:30 a.m. | 11/4, 12:06 p.m. | 11/5 |
| Discovery Mining Services     | 867 873 8332, 11:31 a.m. | 11/4, 12:08 p.m. | 11/5 |
| EBA Engineering               | 867 873 3324, 11:32 a.m. | 11/4, 12:17 p.m. | 11/5 |
| Elk's Club                    | 867 873 3551, 11:33 a.m. | 11/4, 12:19 p.m. | 11/5 |
| Expedite North                | 867 873 2958, 11:35 a.m. | 11/4, 12:21 p.m. | 11/5 |
| Explorer Hotel                | 867 873 2789, 11:36 a.m. | 11/4, 12:23 p.m. | 11/5 |
| Explosives Ltd.               | 867 873 6035, 11:43 a.m. | 11/4, 12:24 p.m. | 11/5 |
| Family Medical Clinic         | 867 873 3175, 11:44 a.m. | 11/4, 12:28 p.m. | 11/5 |
| Finning Canada                | 867 873 6867, 11:46 a.m. | 11/4, no answer  | 11/5 |
| Frame Lake Community Health   | 867 873 3515, 11:47 a.m. | 11/4, 12:31 p.m. | 11/5 |
| Frontier Coachlines           | 867 669 0855, 11:48 a.m. | 11/4, 12:34 p.m. | 11/5 |
| G&G Expediting                | 867 669 9706, 11:50 a.m. | 11/4, 12:36 p.m. | 11/5 |
| Gartner Lee Ltd.              | 867 873 4453, 11:51 a.m. | 11/4, 12:38 p.m. | 11/5 |
| Gibson Medical Clinic         | 867 920 2866, 11:52 a.m. | 11/4, 12:39 p.m. | 11/5 |
| Golder Associated Ltd.        | 867 873 6379, 11:53 a.m. | 11/4, 12:41 p.m. | 11/5 |
| Great Slave Community Health  | 867 873 5912, 11:55 a.m. | 11/4, 12:43 p.m. | 11/5 |
| Great Slave Helicopters       | 867 873 6087, 11:56 a.m. | 11/4, 12:45 p.m. | 11/5 |
| Robert Hawkins, MLA YK        | 867 873 0276, 11:57 a.m. | 11/4, 2:31 p.m.  | 11/5 |
| Home Building Centre          | 867 669 9745, 11:58 a.m. | 11/4, 2:32 p.m.  | 11/5 |
| I & D Management              | 867 766 4915, 11:59 a.m. | 11/4, 2:34 p.m.  | 11/5 |
| JJ Hobbies                    | 867 920 4174, 12:00 p.m. | 11/4, 2:36 p.m.  | 11/5 |
| Jacques Whitford              | 867 920 2278, 12:02 p.m. | 11/4, 2:38 p.m.  | 11/5 |
| Jade Garden                   | 867 873 3052, 12:04 p.m. | 11/4, 2:40 p.m.  | 11/5 |
| Kete Whii Ltd.                | 867 766 2597, 12:05 p.m. | 11/4, 2:42 p.m.  | 11/5 |
| Kimberlite Career Centre      | 867 766 2901, 12:07 p.m. | 11/4, 2:44 p.m.  | 11/5 |
| Kingland Ford                 | 867 920 9201, 12:08 p.m. | 11/4, 2:45 p.m.  | 11/5 |
| Kopykat North                 | 867 920 7548, 12:09 p.m. | 11/4, 2:47 p.m.  | 11/5 |
| Sandy Lee, MLA Range Lk.      | 867 873 0481, 12:10 p.m. | 11/4, 3:01 p.m.  | 11/5 |
| Legislative Assembly          | 867 920 4735, 12:11 p.m. | 11/4, 3:02 p.m.  | 11/5 |
| Liquor Shop                   | 867 766 2715, 12:12 p.m. | 11/4, 3:04 p.m.  | 11/5 |
| Liquor Store                  | 867 873 9225, 12:14 p.m. | 11/4, 3:05 p.m.  | 11/5 |
| MVEIRB                        | 867 766 7074, 12:16 p.m. | 11/4, 3:08 p.m.  | 11/5 |
| MVLWB                         | 867 873 6610, 12:17 p.m. | 11/4, 3:10 p.m.  | 11/5 |
| Matrix Helicopters            | 867 766 3374, 12:18 p.m. | 11/4, 3:12 p.m.  | 11/5 |
| Native Communications Society | 867 920 4205, 12:19 p.m. | 11/4, 3:14 p.m.  | 11/5 |
| Native Womens Assn            | 867 873 3152, 12:21 p.m. | 11/4, 3:16 p.m.  | 11/5 |
| News North                    | 867 873 8507, 12:22 p.m. | 11/4, 3:18 p.m.  | 11/5 |
| North Slave Metis Alliance    | 867 669 7442, 12:23 p.m. | 11/4, 3:19 p.m.  | 11/5 |
| NWT Power Corp                | 867 669 3318, 12:24 p.m. | 11/4, 3:20 p.m.  | 11/5 |
| Nuna Logistics                | 867 766 7824, 12:26 p.m. | 11/4, 3:22 p.m.  | 11/5 |

|                             |   |
|-----------------------------|---|
| NWT Business Dev            | 867 765 0652, 12:27 p.m. 11/4, 3:24 p.m. 11/5 |
| NWT Const Association       | 867 873 8366, 12:28 p.m. 11/4, 3:26 p.m. 11/5 |
| NWT Metis Dev Corp          | 867 873 3492, 12:30 p.m. 11/4, 3:29 p.m. 11/5 |
| NWT & Nu Chamber of Mines   | 867 920 2145, 12:31 p.m. 11/4, 3:32 p.m. 11/5 |
| Ollerhead & Associates      | 867 669 6334, 12:32 p.m. 11/4, 3:34 p.m. 11/5 |
| Outcrop Group               | 867 873 2844, 12:33 p.m. 11/4, 3:36 p.m. 11/5 |
| Overland Sports             | 867 920 4079, 12:34 p.m. 11/4, 4:05 p.m. 11/5 |
| Pioneer Supply House        | 867 873 3397, 12:35 p.m. 11/4, 4:07 p.m. 11/5 |
| Polar Developments          | 867 873 3638, 12:36 p.m. 11/4, 4:09 p.m. 11/5 |
| RT Associates               | 867 873 8377, 12:37 p.m. 11/4, 4:10 p.m. 11/5 |
| RTL Robinson Enterprises    | 867 920 2661, 12:39 p.m. 11/4, 4:12 p.m. 11/5 |
| Racquet Club                | 867 920 2480, 12:40 p.m. 11/4, 4:13 p.m. 11/5 |
| Raven Resources Ltd.        | 867 873 8304, 12:44 p.m. 11/4, 4:16 p.m. 11/5 |
| Rescan Environmental        | 867 920 2015, 12:45 p.m. 11/4, 4:18 p.m. 11/5 |
| Legion                      | 867 920 4579, 12:47 p.m. 11/4, 4:21 p.m. 11/5 |
| RCMP                        | 867 669 5175, 12:49 p.m. 11/4, 4:22 p.m. 11/5 |
| Shoppers Drug Mart          | 867 920-2012, 12:50 p.m. 11/4, 4:24 p.m. 11/5 |
| Stanton Hospital            | 867 669 4139, 12:55 p.m. 11/4, 4:27 p.m. 11/5 |
| Status of Women Council     | 867 873 0285, 1:00 p.m. 11/4, 4:28 p.m. 11/5  |
| Sub-Arctic Survey Ltd.      | 867 873 9079, 1:02 p.m. 11/4, 4:31 p.m. 11/5  |
| Subway Cafe                 | 867 920 7326, 1:03 p.m. 11/4, 4:33 p.m. 11/5  |
| Summit Air Charters         | 867 669 9649, 1:05 p.m. 11/4, 4:35 p.m. 11/5  |
| Sutherland's Drugs          | 867 920-4655, 1:08 p.m. 11/4, 4:38 p.m. 11/5  |
| Tait Communications         | 867 669 7058, 1:10 p.m. 11/4, 4:39 p.m. 11/5  |
| Tamarack Computers          | 867 920 4384, 1:12 p.m. 11/4, 4:43 p.m. 11/5  |
| Terriplan Consultants       | 867 873 2402, 1:14 p.m. 11/4, 4:44 p.m. 11/5  |
| The Mine Training Society   | 867 765 0446, 1:16 p.m. 11/4, 4:46 p.m. 11/5  |
| Tim Horton's                | 867 873 4770, 1:19 p.m. 11/4, 4:48 p.m. 11/5  |
| Tli Cho Lantran Transport   | 867 873 2780, 1:21 p.m. 11/4, 4:49 p.m. 11/5  |
| Tli Cho Logistics           | 867 920 7328, 1:30 p.m. 11/4, 4:51 p.m. 11/5  |
| Tli Cho Government          | 867 766 3441, 1:33 p.m. 11/4, 4:53 p.m. 11/5  |
| Tree of Peace Friendship C. | 867 873 5185, 1:35 p.m. 11/4, 4:54 p.m. 11/5  |
| Village Reddi Mart          | 867 920 4881, 1:37 p.m. 11/4, 4:58 p.m. 11/5  |
| Weaver & Devore             | 867 873 9020, 1:39 p.m. 11/4, 4:59 p.m. 11/5  |
| Wekeezhii LWB               | 867 669 9593, 1:41 p.m. 11/4, 5:01 p.m. 11/5  |
| Western Explosives          | 867 920 7597, 1:43 p.m. 11/4, 5:03 p.m. 11/5  |
| WCB                         | 867 873 4596, 1:45 p.m. 11/4, 5:04 p.m. 11/5  |
| YK Book Cellar              | 867 873 6105, 1:50 p.m. 11/4, 5:06 p.m. 11/5  |
| YK chamber of Commerce      | 867 920 4640, 1:52 p.m. 11/4, 5:07 p.m. 11/5  |
| YK Coop                     | 867 873 3769, 1:53 p.m. 11/4, 5:09 p.m. 11/5  |
| Yk Inn                      | 867 873 2602, 1:55 p.m. 11/4, 5:10 p.m. 11/5  |
| YK Liquor Store             | 867 873 9225, 1:57 p.m. 11/4, 5:11 p.m. 11/5  |
| YK Metis Local 66           | 867 766 2118, not in service                  |
| YK Motors                   | 867 766 5001, 2:15 p.m. 11/4, 5:14 p.m. 11/5  |

YK Public Library  
YK Dene First Nation  
YWCA

867 920-5671, 2:27 p.m. 11/4, 5:16 p.m. 11/5  
867 873 5969, 2:30 p.m. 11/4, 5:18 p.m. 11/5  
867 873 9406, 2:32 p.m. 11/4, 5:20 p.m. 11/5



## **Yellowknife Notes – Nov 15/08**

Personal Note: NSMA invited via email sent by Rick Schryer. Majority of attendees are business people.

- Have you applied for a water permit?
  - RS – Yes, we have.
- Construction 2011?
  - RS – If everything goes according to schedule.
- How deep underground?
  - RS – 450 metres
- Do you have an office in town?
  - RS – In Behchoko.
- Will open pit be allowed to flood with water?
  - RS – Yes. Water table will not allow much water to flood in. Only issue with pit filling to top is if arsenic comes out from pit. We're currently testing with leach barrels.
- Where are you in financing?
  - RS – Our President is currently in Korea looking at investment opportunities.
- So no guarantees?
  - RS – It's solid. We know we're good, on solid ground.
- Are there options for a joint venture?
  - RS – yes.
- Have you released a profit projection for mine?
  - RS - \$300 million. But that prediction was done when fuel costs were at their highest point.
- When will Hemlo infrastructure get to site?
  - RS – We have to be off of Hemlo by April 2010 and we will use the winter road to move it to site.
- Any more work done on Sue-Dianne?
  - RS – No.
- What about the all weather road, do you have permits?
  - RS – We can construct most of the mine by moving materials via the winter road, but we will need the road to get finished product out to market.
- Do you have any concerns about getting 600 skilled construction workers?
  - PM – we want to hire locally first, then hire outside of the north.
- Do you have a timeline for permitting:
  - RS – Timeline for EA is up to the Tlicho people. Only real issue is arsenic. There is already a lot of natural arsenic. EA should not take long. Pretty straightforward project. Pretty confident it will move quickly. Still working with a new government and a lot of new members on WLWB.

# December 2008

| SUNDAY                              | MONDAY  | TUESDAY                             | WEDNESDAY   | THURSDAY                            | FRIDAY  | SATURDAY                            |
|-------------------------------------|---|-------------------------------------|---|-------------------------------------|---|-------------------------------------|
|                                     | 1   | 2                                   | 3   | 4                                   | 5   | 6                                   |
| 7                                   | 8   | 9                                   | 10  | 11                                  | 12  | 13                                  |
| 14                                  | 15  | 16                                  | 17  | 18                                  | 19  | 20                                  |
| 21                                  | 22<br>CKLB<br>1 English<br>2 Tlicho<br><br>News North | 23<br>CKLB<br>1 English<br>2 Tlicho | 24<br>CKLB<br>1 English<br>2 Tlicho<br><br>Yellowknifer | 25<br>CKLB<br>1 English<br>2 Tlicho | 26<br>CKLB<br>1 English<br>2 Tlicho<br><br>No Paper | 27<br>CKLB<br>1 English<br>2 Tlicho |
| 28<br>CKLB<br>1 English<br>2 Tlicho | 29<br>CKLB<br>1 English<br>2 Tlicho<br><br>No Paper   | 30<br>CKLB<br>1 English<br>2 Tlicho | 31<br>CKLB<br>1 English<br>2 Tlicho<br><br>Yellowknifer |                                     |   |                                     |

# January 2009

| SUNDAY                            | MONDAY  | TUESDAY                           | WEDNESDAY                         | THURSDAY                          | FRIDAY  | SATURDAY                          |
|-----------------------------------|---|-----------------------------------|-----------------------------------|-----------------------------------|---|-----------------------------------|
|                                   |   |                                   |                                   | 1<br>CKLB<br>1 English<br>2 Ticho | 2<br>CKLB<br>1 English<br>2 Ticho<br><br>No Paper | 3<br>CKLB<br>1 English<br>2 Ticho |
| 4<br>CKLB<br>1 English<br>2 Ticho | 5<br>CKLB<br>1 English<br>2 Ticho<br><br>News North | 6<br>CKLB<br>1 English<br>2 Ticho | 7<br>CKLB<br>1 English<br>2 Ticho | 8                                 | 9   | 10                                |
| 11                                | 12  | 13                                | 14                                | 15                                | 16  | 17                                |
| 18                                | 19  | 20                                | 21                                | 22                                | 23  | 24                                |
| 25                                | 26  | 27                                | 28                                | 29                                | 30  | 31                                |





**FORTUNE**  
**MINERALS LIMITED**

**You are invited to learn more about**

**Fortune Minerals Ltd.  
NICO Project mine application**

**In Behchoko  
January 6, 2008  
7 p.m. Culture Centre**

for more information: contact  
Patrick Moloney (877) 552-7726

Faxed to:

|                                |                              |                 |      |
|--------------------------------|------------------------------|-----------------|------|
| Aurora College Learning Centre | 867 392 6366, 7:38 p.m.      | 11/3, 6:28 p.m. | 11/5 |
| Chief Jimmy Bruneau School     | 867 371 3083, 7:41 p.m.      | 11/3, 6:30 p.m. | 11/5 |
| Elizabeth Mackenzie School     | 867 392 6080, 7:44 p.m.      | 11/3, 6:32 p.m. | 11/5 |
| Behchoko Comm Services         | 867 371 3083, 7:41 p.m.      | 11/3, 6:30 p.m. | 11/5 |
| Camp Ekwo                      | 867 371 3155, 7:45 p.m.      | 11/3, 6:34 p.m. | 11/5 |
| Comm Gov't of Behchoko         | 867 392 6139, 7:46 p.m.      | 11/3, 6:36 p.m. | 11/5 |
| Dogrib Group of Companies      | 867 382 6389, 7:47 p.m.      | 11/3, 6:38 p.m. | 11/5 |
| Dogrib Treaty 11 Council       | 867 392-6389, 7:47 p.m.      | 11/3, 6:38 p.m. | 11/5 |
| Tli cho Lands Department       | 867 392 6862, 7:49 p.m.      | 11/3, 6:40 p.m. | 11/5 |
| FC Services Ltd.               | 867 392 6144, 7:50 p.m.      | 11/3, 6:42 p.m. | 11/5 |
| Income Support Program         | 867 392 6740, 7:52 p.m.      | 11/3, 6:44 p.m. | 11/5 |
| Legal Aid Court Worker         | 867 392 6387, 7:54 p.m.      | 11/3, 6:46 p.m. | 11/5 |
| Marie Adele Bishop Health Cen. | 867 392 6612, 7:55 p.m.      | 11/3, 6:48 p.m. | 11/5 |
| Nishi=Khon Forestry Service    | 867 392 6913, 7:56 p.m.      | 11/3, 6:50 p.m. | 11/5 |
| Northern Store                 | 867 392 6209, 7:59 p.m.      | 11/3, 6:52 p.m. | 11/5 |
| Our Video Store                | 867 392 6720, 8:01 p.m.      | 11/3, 6:54 p.m. | 11/5 |
| Pape Salter Teillet            | 867 392 6085, 8:03 p.m.      | 11/3, 6:55 p.m. | 11/5 |
| Rabesca's Resources            | 867 371 3155, 8:04 p.m.      | 11/3, 6:34 p.m. | 11/5 |
| Rae Edzo Counselling Serv.     | 867 392 6093, 8:06 p.m.      | 11/3, 6:57 p.m. | 11/5 |
| Rae Edzo Friendship Express    | 867 392 6093, 8:06 p.m.      | 11/3, 6:57 p.m. | 11/5 |
| Rae Edzo Housing Authority     | 867 392 6133, 8:07 p.m.      | 11/3, 6:59 p.m. | 11/5 |
| Rae Senior Citizen's Home      | 867 392 6872, 8:08 p.m.      | 11/3, 7:01 p.m. | 11/5 |
| Rae Edzo Dene Band Dev Corp    | 867 392 6418, 8:10 p.m.      | 11/3, 7:03 p.m. | 11/5 |
| RCMP                           | 867 392 6281, 8:12 p.m.      | 11/3, 7:04 p.m. | 11/5 |
| Tli Cho Motel                  | 867 392 6260, no answer      | 11/3 + 11/5     |      |
| Tlich Comm. Service Agency     | 867 392 3001/6535, 8:14 p.m. | 11/3, no answer |      |
| 11/5                           |                              |                 |      |

Behchoko Meeting Summary of Questions and Comments  
January 6, 2009

Questions and responses following Fortune Minerals Limited's (Fortune) presentation. Presentation given by Rick Schryer of Fortune.

Philip Huskey (elder):

Will the IBA include mineral royalties to the Tlicho Government?

Will there be safeguards against environmental effects?

What percent of the Tlicho people are in favour of this project?

There is a need to consult those members who are not in the communities.

He knows Carl but does not know who it is that he works for and this is important to know for trust.

Will the mine destroy his trap line?

Is there a plan for closing the mine properly at the end?

Rick Schryer:

For the IBA, Fortune Minerals is open to discussing anything that the Tlicho want to bring forward.

Fortune does not have figures regarding percentages in favour but noted that based on the responses we have had, the percentage appears to be very high. People tend to ask why it hasn't opened yet and when/where can they apply to work and how soon can they start.

The closure plan must be submitted with the application and is subject to regulatory approval. Current mining practices have changed substantially from the days of Rayrock.

Terry Testart (admin officer for Behchoko):

Are the community councils involved with IBA negotiations?

Rick Schryer:

The first step will be to decide the format of the IBA negotiations and this will require the Tlicho Government and people to determine how they will be engaged. We will not specify how the Tlicho should negotiate with us.

Leon Lafferty:

Behchoko, being the only community downstream of the mine site, has the greatest potential for water quality impacts. This has the potential to affect wildlife and lifestyles, in addition to the potential for Behchoko to require water treatment plant upgrades. These issues will be brought forward in the negotiations. Because of its unique position relative to water impacts, Behchoko will want separate consideration in the IBA. Roads are a minor issue for Behchoko, but water is a major issue.

Rick Schryer:

Leon's concerns were acknowledged and he described how we have been adding water monitoring locations at the baseline stage to be able to gauge potential future impacts. He assured Leon that Behchoko's concerns would be addressed.

Charlie Tastia:

Rayrock took advantage of people's ignorance in those days but these mistakes would not be allowed now. It will be important for all to sit together and discuss the entire projects impacts, both positive and negative. He acknowledged the need for work for young people and noted that he had 18 years experience on mining sites. He noted the radioactivity at Rayrock. He also noted that a road could help food costs to drop in the northern communities.

Bobby Weyallon:

He noted that the baseline studies must be done and stated that mine footprints can be very large. Why not leave this place alone. He said he observed things being placed in the wrong places at Ekati and that removal of rock from underground can change the chemistry. Colomac is taking a long time to close. What will the area look like in the future.

Rick Schryer:

Mines now must plan for closure right from the start. All of the mining planning will be undertaken with closure in mind. This was not the case in the past and he acknowledged the legacy this has left.

Bertha Black

Bertha wondered about the impacts from the development of Site 7 and about the results of the feasibility study for this site. She has concerns for the social health of the communities due to impacts from the mine and wondered if there had been socio-economic studies done. Has the GNWT done these studies? She echoed earlier concerns expressed for water quality.

Rick Schryer:

He indicated that Fortune could not speak on behalf the Site 7 plans as this was Behchoko Development's project. However, the project depends on customers being available. Feasibility studies have been done and we have been told that it looks good, but the work was not done solely for Fortune. He cannot comment on studies for the Site 7 project as our studies were focused on the proposed mine. He speculated that if they were to proceed, environmental studies would have to be undertaken. He suggested that people ask Behchoko Developments for more information. He noted that Fortune is just starting the socio-ec studies and that interviews are planned for February. The GNWT will also be an important source of information.





**FORTUNE**  
**MINERALS LIMITED**

**You are invited to learn more about**

**Fortune Minerals Ltd.  
NICO Project mine application**

**In Whati  
January 7, 2009  
7 p.m. Cultural Centre**

for more information: contact  
Patrick Moloney (877) 552-7726

Faxed to:

|                           |   |
|---------------------------|---|
| Air Tindi                 | 867 573 3188, 6:40 p.m. 11/3, 5:59 p.m. 11/5  |
| Alex's Confectionery      | 867 573 3705, 6:44 p.m. 11/3, 6:02 p.m. 11/5  |
| Charter comm. Of Wha ti   | 867 573 3018, 6:47 p.m. 11/3, 6:04 p.m. 11/5  |
| SAO Fax Line              | 867 573 3023 - no answer 11/3, no answer 11/5 |
| Dogrib Comm Serv. Board   | 867 573 3043 - no answer 11/3, no answer 11/5 |
| Lac la Martre Dev Corp    | 867 573 3461, 6:50 p.m. 11/3, 6:09 p.m. 11/5  |
| NWT Power Corp            | 867 573 3402, 6:52, p.m. 11/3, 6:11 p.m. 11/5 |
| RCMP                      | 867 573 3026, 6:53 p.m. 11/3, 6:13 p.m. 11/5  |
| Tli Comm Serv Agency      | 867 573 3701, 6:55 p.m. 11/3, 6:15 p.m. 11/5  |
| Mezi Comm School          | 867 573 3063, 6:56 p.m. 11/3, 6:18 p.m. 11/5  |
| Tli Cho Government        | 867 573 3075 6:58 p.m. 11/3, 6:21 p.m. 11/5   |
| Wha Ti community store    | 867 573 3511 7:00 p.m. 11/3, 6:23 p.m. 11/5   |
| Wha Ti Health Care Center | 867 573 3701 7:01 p.m. 11/3, 6:25 p.m. 11/5   |

Whati Meeting Summary of Questions and Comments  
January 7, 2009

Questions and responses following Fortune Minerals Limited's (Fortune) presentation. Presentation given by Rick Schryer of Fortune.

Archie Beaverho:

Will Fortune manage environmental issues properly?  
Will we build a road to Whati?

Rick Schryer:

Because of the type of project and the location/setting, the environmental issues are relatively easy to manage and Fortune is committed to this. We are not a large multinational company with a head office in another country. We are a small Canadian company, easy to approach and committed to environmentally responsible development.

The GNWT is planning to build an all-land winter road to Whati and Gameti that Fortune plans to upgrade to an all weather road to the mine site. The mine access road will branch off of the Whati-Gameti road about 30 km north of the LaMartre River, unless the GNWT decides to veer to the east closer to the mine site.

Domonic Grosco:

What is the expected start date and mode of transportation to and from Work?  
Will it be possible to drive to work at the mine from Whati?

Rick Schryer:

The expected start date for mine operation is currently in 2012.  
Fortune envisions busing people to and from Whati, but driving could be possible. Due to the distance, it may not be practical to expect to drive back and forth daily though.

Francis Zoe:

What is the difference between Fortune's project and Colomac?  
What chemicals will we be using?  
Will there be problems related to caribou migrating through mine site?  
To build the tailings dykes, will the soil be dug down to bedrock?

Rick Schryer:

Colomac was only a gold mine; whereas NICO is mainly cobalt and bismuth with some gold. Unlike with Colomac, mines now must plan for closure right from the start of operations. The closure plan is

subject to review and approval before the mine can begin operating. He acknowledged that there are examples of bad closure planning and operation in the past but current practice is much different.

Several chemical processes will be used, primarily acid and bases, but cyanide will be used for gold processing. Most of the chemicals are recycled into the process and used over and over. Colomac had issues related to cyanide and ammonia. In this case Fortune plans to re-circulate as much water as possible avoided the need for new water for these processes. All water will be treated to meet acceptable criteria prior to release from the mine site.

Very few caribou have been observed over several years in the mine site area. There currently are no plans to address problem caribou migration but we would deal with this issue if it arose.

In order to have the proper foundations for the dykes the soil will be removed to bedrock.