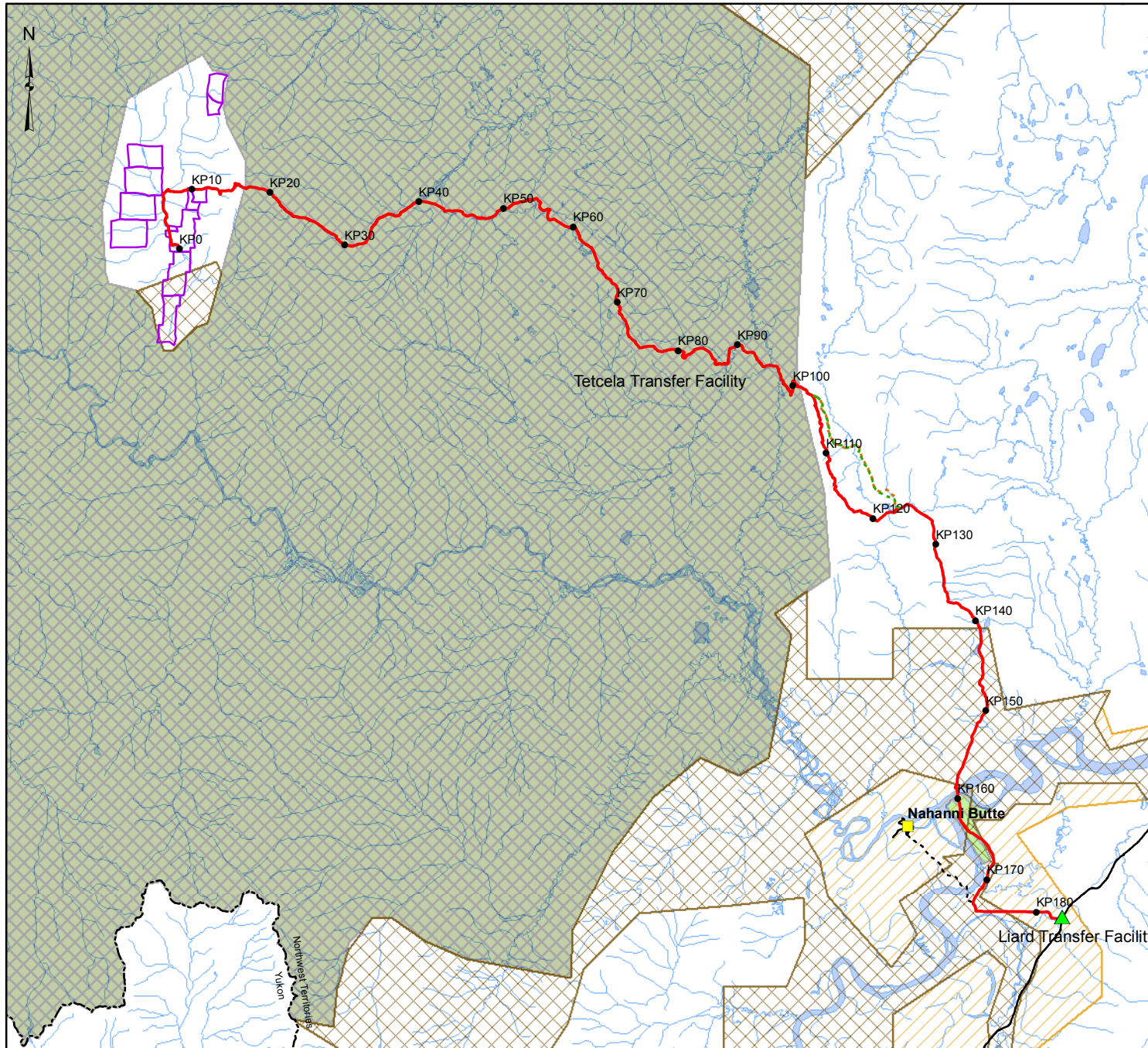




# PRAIRIE CREEK PROPOSED ALL-SEASON ACCESS ROAD

Government of  
Northwest Territories



## LEGEND

- Preferred alignment option 1
- Preferred alignment option 2

## Symbology

- Road Markers
- NT Populated Places
- Prairie Creek Proposed All-Season Access Road (22/04/16)

## Roads

- All Season
- Winter

## Mineral Lease

- Active

## Land Withdrawal Areas

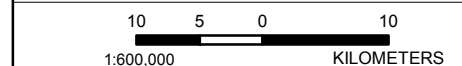
- Subsurface
- Surface/Subsurface

## Federally Managed Lands

- Surface - Indian Affairs Branch (IAB) lands
- Surface/Subsurface - Nahanni National Park Reserve

## DISCLAIMER

THIS MAP IS FOR ILLUSTRATIVE PURPOSES ONLY. ACTUAL FEATURE BOUNDARIES DEPICTED MAY NOT BE EXACTLY AS SHOWN. LANDUSE AND SUSTAINABILITY AND THE NWT CENTRE FOR GEOMATICS ARE NOT RESPONSIBLE FOR ERRORS OR DISCREPANCIES



GIS	MS	6/6/2016	Doc ID: MXD-527
QA/QC	—	—/—/—	