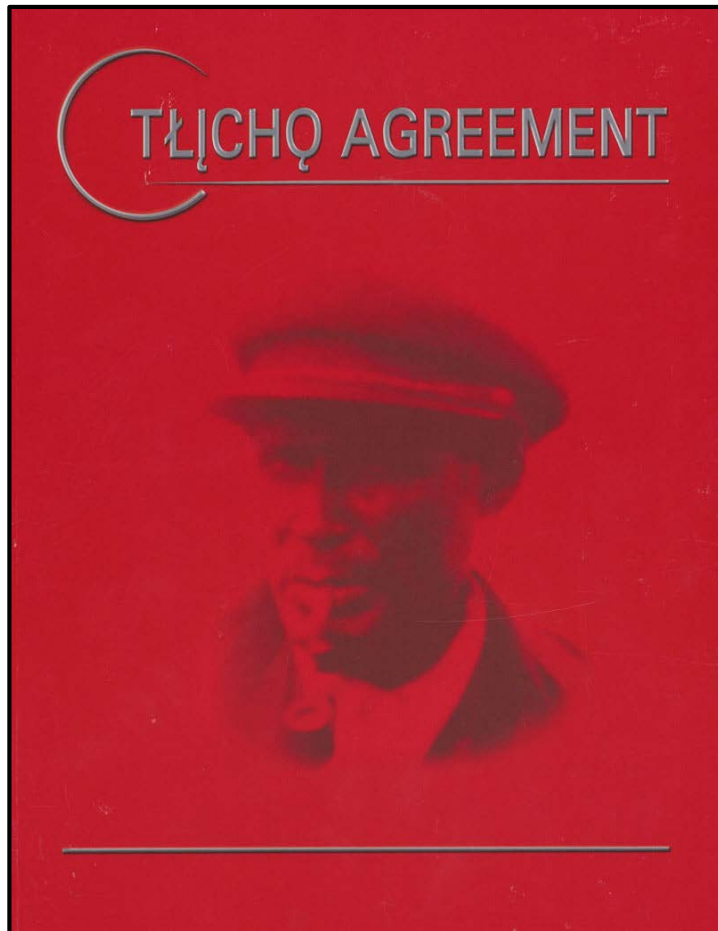




Tłıchọ All-Season Road Project EA-1617-01

**Wek'èezhì Renewable Resources Board
November 16, 2017 (Day 2)**

Wek'èezhì Renewable Resources Board



- **Co- management board established by the Tłıchǫ Agreement**
- **Responsibilities include Wildlife, Forests, Plants & Protected Area**

Considerations

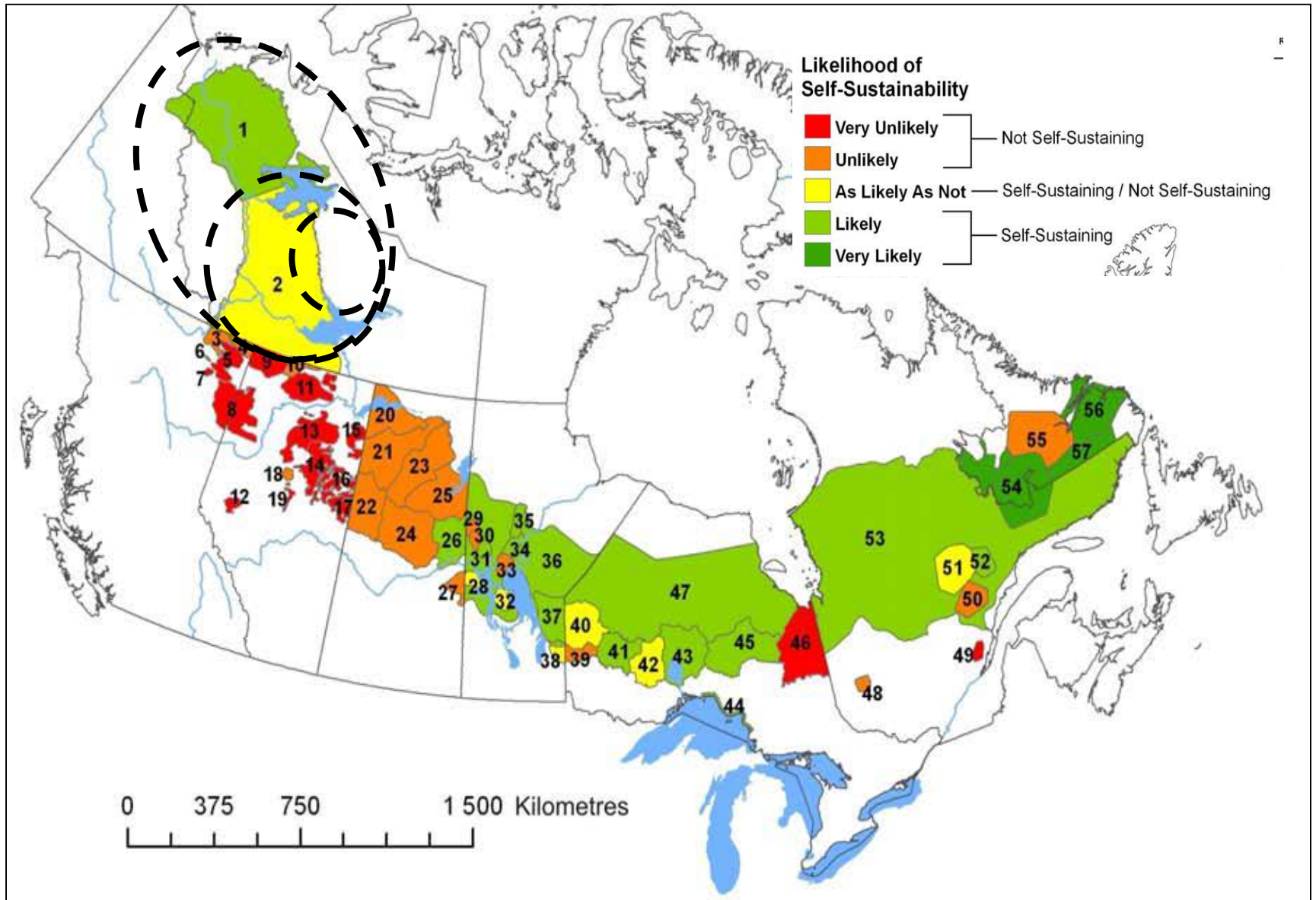
Use both Tłıchǰ Knowledge and science to make balanced decisions supporting the Tłıchǰ philosophy of “*Strong Like Two People*”

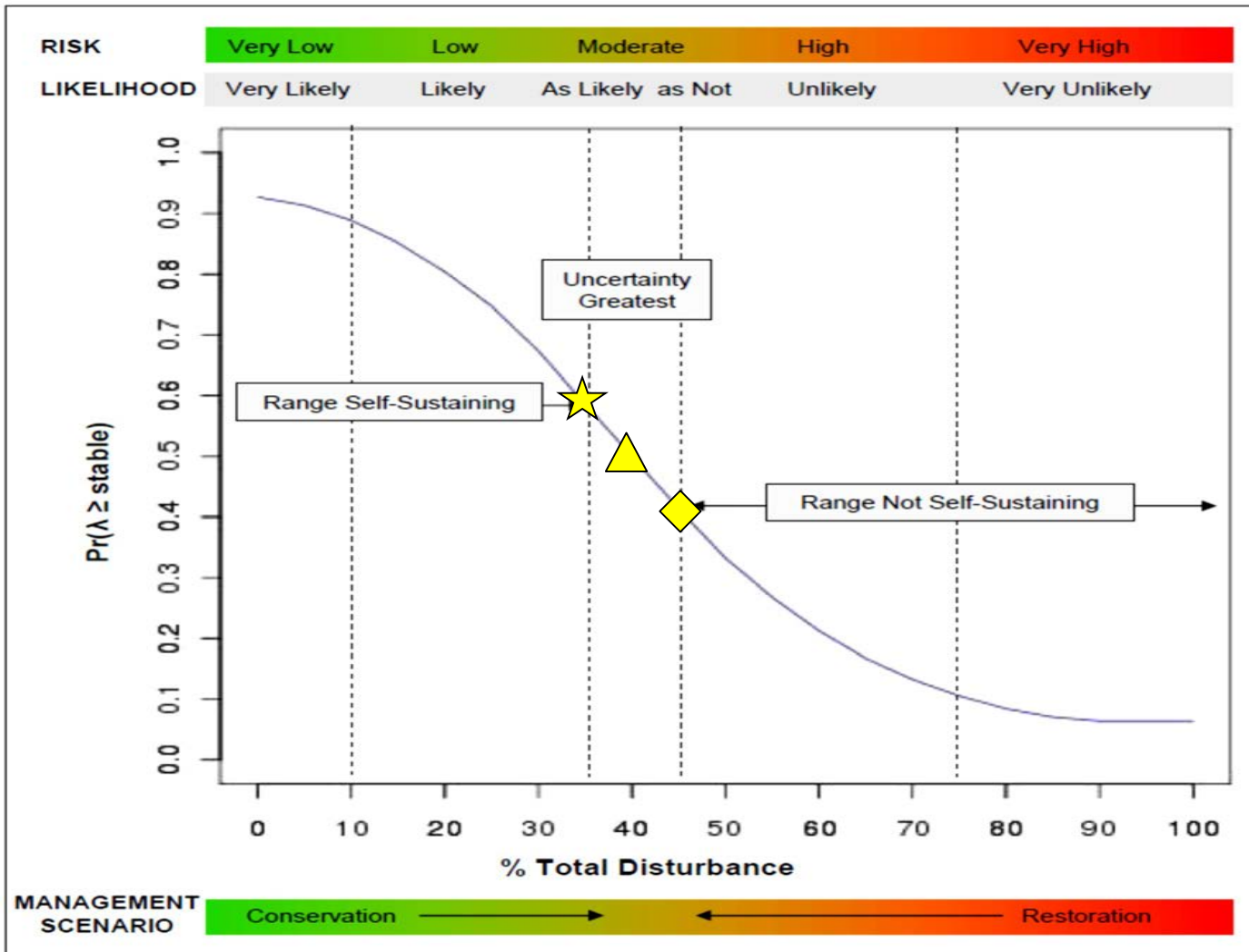


Overall Concern ~ Uncertainty



Spatial Boundaries





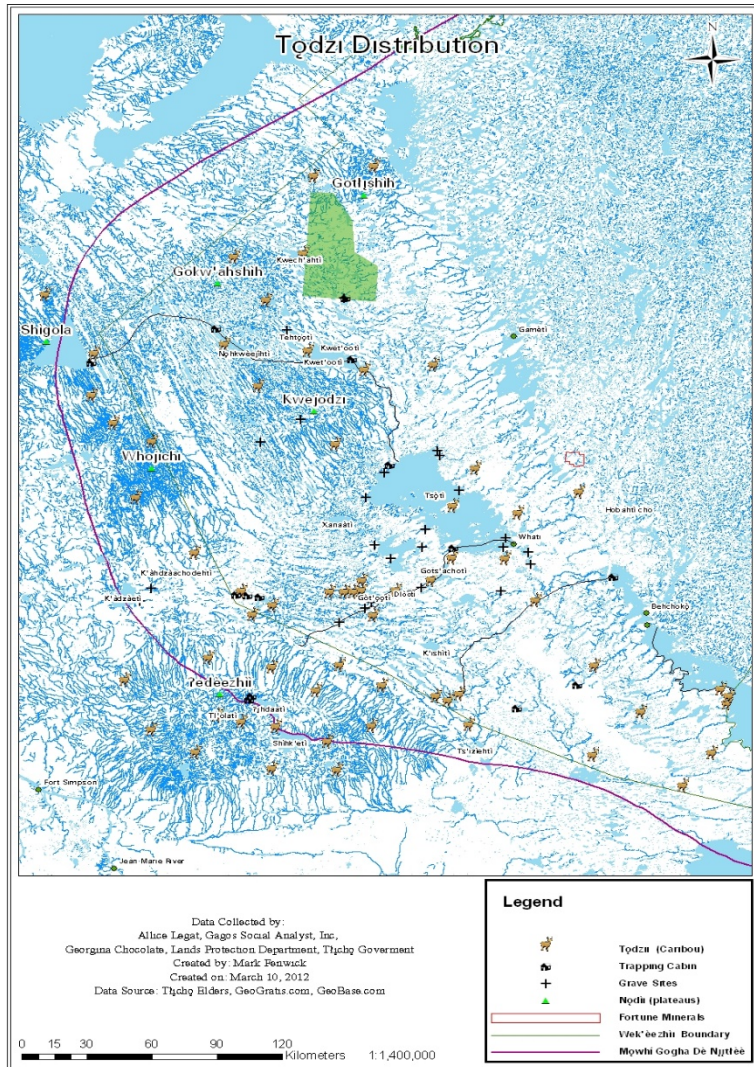
**NT1
65 %**



**NWT South
62%**



**Wek'èezhì
55%**

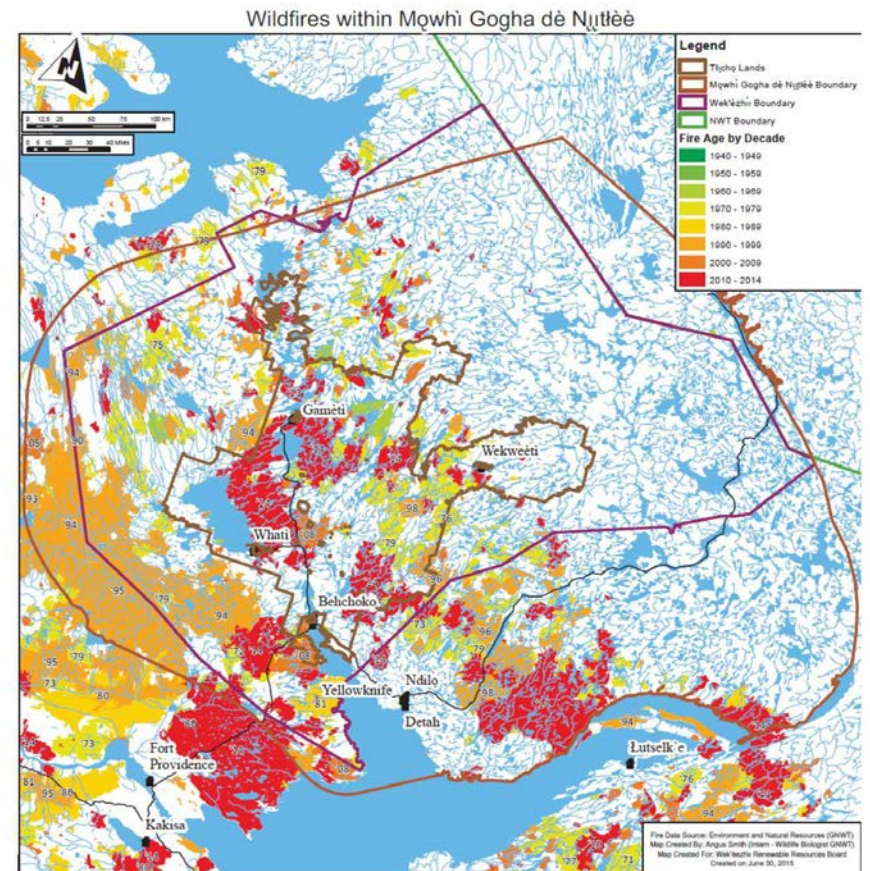


“Tòdzì do not stay in one place; they wander all over [to forage]. ... Tòdzì do not remain in one spot.”

~ Margaret Nitsiza, 2015

"Forest fires ... are a concern because most often they burn all the animals' food on the land."

~ Jimmy B. Rabesca, 2012



Respectful Harvest

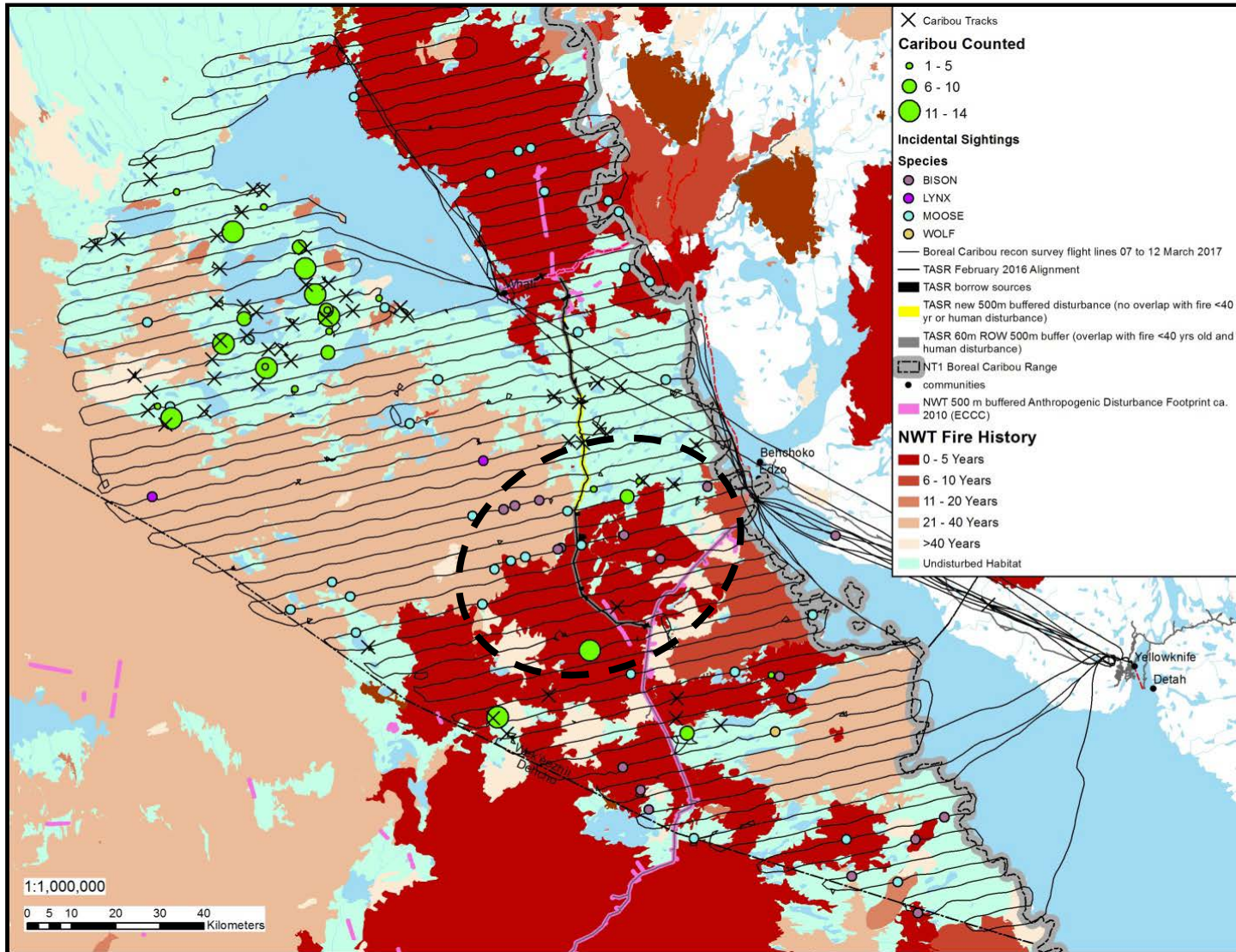


Credit: Camilla Nitsiza



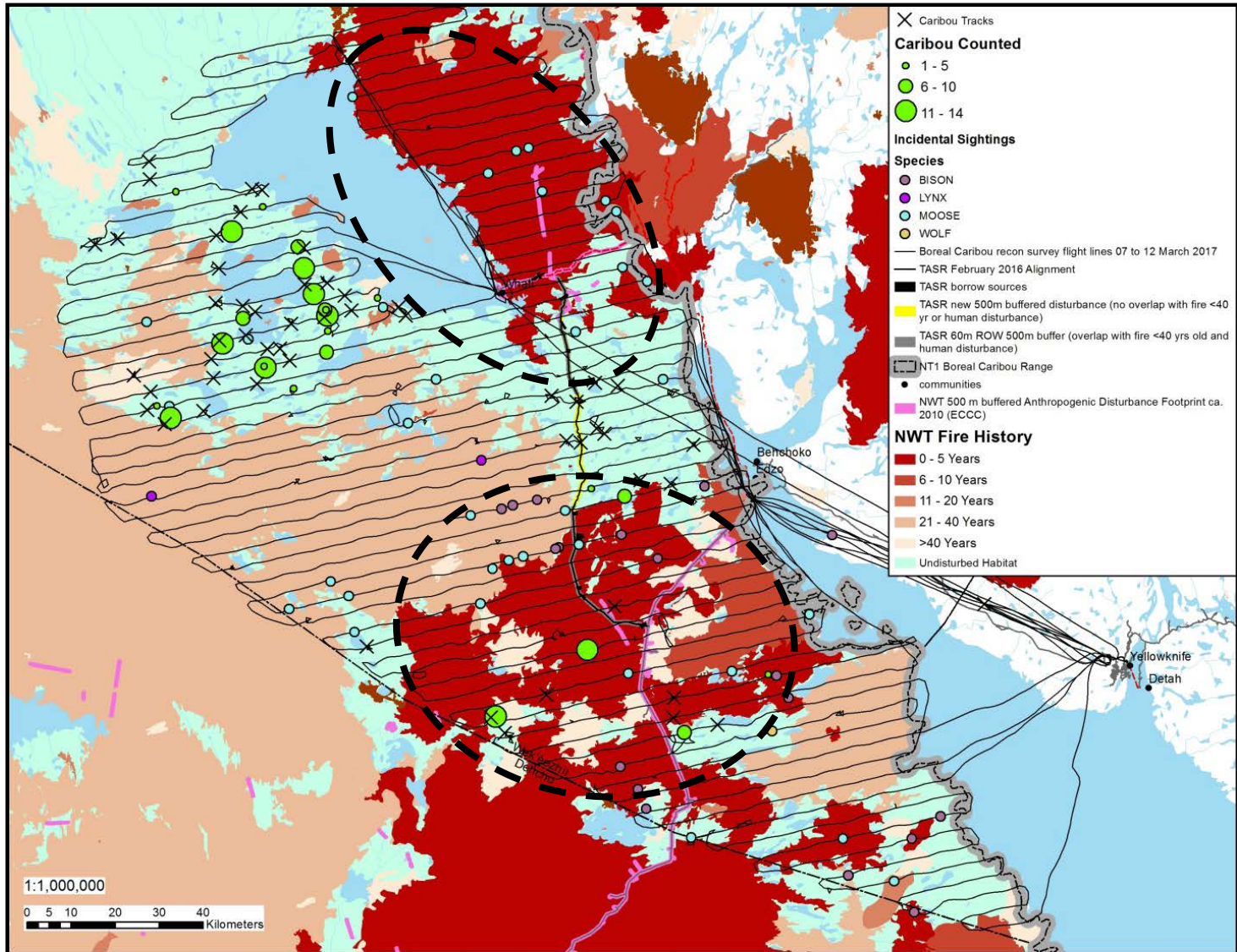
Credit: Camilla Nitsiza

Predation



Bison

Predation



Moose

***"My brother, Zòòzeh, spotted lynx tracks, and since it was their prime fur season, he decided to follow the track. He came to where the lynx was and noticed that the lynx had pushed all the snow together, banking it to watch the area for caribou. Suddenly the lynx jumped into the air and attacked one toḏzi by ripping its throat."* ~ Pierre Beaverho, 2012**



Monitoring & Mitigation



Credit: Peter Mather

Indefinite Timelines



Credit: Joyce Majiski

Cumulative Effects



Credit: Alice Legat

Habitat Restoration, Recovery, Offsetting



Credit: Alice Legat

Recommendations



Credit: Anne Gunn

- **Revise assessment endpoints**
- **Change spatial boundaries**
- **Include effect of disrespectful harvesting on caribou behaviour and road avoidance**

Recommendations

- **Collaborative TASR working group**
- **Revise the WMMP to separate construction and operation monitoring and adaptive mitigation**
- **Complete range and management plans**



Caribou Road Mitigation Plan



Precautionary Principle



Credit: Anne Gunn



**WRRB contact info:
102A, 4504-49th Ave, Yellowknife
jpellissey@wrrb.ca; btracz@wrrb.ca**